

NAREIT®

Ugrvgo dgt 2012

REITWatch®

A Monthly Statistical Report on the Real Estate Investment Trust Industry



National Association of Real Estate Investment Trusts®

REITs: Building Dividends & Diversification®

NAREIT Disclaimer

NAREIT® does not intend this publication to be a solicitation related to any particular company, nor does it intend to provide investment, legal or tax advice. Investors should consult with their own investment, legal or tax advisers regarding the appropriateness of investing in any of the securities or investment strategies discussed in this publication. Nothing herein should be construed to be an endorsement by NAREIT of any specific company or products or as an offer to sell or a solicitation to buy any security or other financial instrument or to participate in any trading strategy. NAREIT expressly disclaims any liability for the accuracy, timeliness or completeness of data in this publication. Unless otherwise indicated, all data are derived from, and apply only to, publicly traded securities. Any investment returns or performance data (past, hypothetical or otherwise) are not necessarily indicative of future returns or performance. Copyright 2012 by NAREIT®. NAREIT and REITWatch are the exclusive registered marks of the National Association of Real Estate Investment Trusts®. Please direct all questions or comments to John Barwick, Director, Industry Information & Statistics, NAREIT®, 1875 I Street, NW, Suite 600, Washington, DC 20006 or call (202) 739-9400.

REITWATCH

TABLE OF CONTENTS

I. Indicators of US REIT Investment Performance

REIT Industry Fact Sheet	1
Investment Performance of the FTSE NAREIT US Real Estate Index Series	3
Investment Performance by Property Sector and Subsector	4
Selected Indicators of Equity Market Performance	5
Historical Offerings of REIT Securities	6
FTSE NAREIT Equity REITs Dividend Yield vs. 10-Year Constant Maturity Treasury	7
FTSE NAREIT Equity REITs Dividend Yield Spread.....	7
Major Stock Total Return Indexes.....	8
Average Daily Dollar Trading Volume	9
Comparative Total Return Investment Performance	10
Comparative Total Return Investment Correlations	11
20-Year Average Annual Total Returns	12
Adjusted 20-Year Average Annual Total Returns.....	12
20-Year Average Annual Total Return vs. 20-Year Standard Deviation of Annual Total Return .	13
FTSE NAREIT All Equity REITs Return Components	14
S&P 500 Return Components.....	15
Wilshire 5000 Return Components	16
Annual Price and Total Returns by Investment Sector.....	17
Annual Price and Total Returns by Property Sector.....	18
Annual Price and Total Returns by Property Subsector	19
Annual Equity Market Capitalization.....	20
REITs in the FTSE NAREIT All REIT Index and S&P Equity Indexes.....	21
Mergers & Acquisitions Activity	26

II. US REIT Performance Statistics by Property Sector and Subsector

Industrial/Office	28
• Office	
• Industrial	
• Mixed	
Retail	29
• Shopping Centers	
• Regional Malls	
• Free Standing	
Residential.....	30
• Apartments	
• Manufactured Homes	
Diversified.....	31
Health Care.....	31
Lodging/Resorts	31
Self Storage	31
Timber	31
Mortgage	32
• Home Financing	
• Commercial Financing	



III. Indicators of US REIT Industry Activity

REIT Payout Ratios: Dividend as a Percent of Funds from Operations 33
REIT Dividends and Funds from Operations by Property Sector/Subsector 34
US REIT Industry Balance Sheet 35
Summary of REIT Financial Leverage 36

IV. Indicators of Global Real Estate Investment Performance

FTSE EPRA/NAREIT Global Real Estate Index Series Investment Performance 37

V. Glossary of REITWatch Terms



This page intentionally left blank.

REIT Industry Fact Sheet

Data as of August 31, 2012, except where noted.

All data are derived from, and apply only to, publicly traded US REITs.

Industry Size

- FTSE NAREIT All REITs equity market capitalization = \$581 billion
- FTSE NAREIT All Equity REITs equity market capitalization = \$517 billion
- REITs own approximately \$850 billion of commercial real estate assets, including listed and non-listed REITs
- 167 REITs are in the FTSE NAREIT All REITs Index
- 151 REITs trade on the New York Stock Exchange
- NYSE listed REITs equity market capitalization = \$561 billion

Investment Performance

Year-to-date and compound annual total returns of the FTSE NAREIT All REITs Index, the FTSE NAREIT All Equity REITs Index, and leading US benchmarks for periods ending August 31, 2012:

	FTSE NAREIT		S&P 500	Russell 2000	NASDAQ Composite ¹	Dow Jones Industrial Average ¹
	All REITs	All Equity REITs				
2012: YTD	18.62	17.54	13.51	10.60	17.73	7.15
1-Year	21.46	20.61	18.00	13.40	15.40	15.40
3-Year	23.19	23.76	13.62	13.89	15.14	11.29
5-Year	3.54	3.43	1.28	1.90	3.39	-0.40
10-Year	10.49	11.19	6.51	9.00	8.84	4.21
15-Year	8.81	9.48	4.89	5.79	4.49	3.67
20-Year	10.86	11.38	8.43	9.03	8.84	7.20
25-Year	9.16	10.39	8.40	7.94	7.93	6.58
30-Year	10.60	12.59	11.39	10.37	9.93	9.33
35-Year	11.16	13.06	11.21	-	10.27	8.08
40-Year	9.85	12.12	9.90	-	8.22	6.74
1972 - 2012	9.75	12.16	10.01	-	8.30	6.83

Data in percent; highest return for the period in bold.

¹ Price only returns.

Dividends

Yield Comparison

- FTSE NAREIT All REITs: 4.20%
- FTSE NAREIT All Equity REITs: 3.26%
- S&P 500: 2.22%

- REITs paid out approximately \$22 billion in dividends in 2011.
- On average, 72 percent of the annual dividends paid by REITs qualify as ordinary taxable income, 14 percent qualify as return of capital and 15 percent qualify as long-term capital gains.

REIT Industry Fact Sheet

Data as of August 31, 2012, except where noted.

All data are derived from, and apply only to, publicly traded US REITs.

Leverage and Coverage Ratios

(Data as of 2012: Q1)

Equity REITs

- Debt Ratio: 35.8%
- Coverage Ratio: 2.9x
- Fixed Charge Ratio: 2.6x
- 46 Equity REITs are rated investment grade, 68 percent by equity market capitalization.

All REITs

- Debt Ratio: 51.0%
- Coverage Ratio: 2.6x
- Fixed Charge Ratio: 2.4x
- 46 REITs are rated investment grade, 62 percent by equity market capitalization.

- Debt ratio equals total debt divided by total market capitalization. Total market capitalization is the sum of total debt and implied equity market capitalization (common shares plus operating partnership units).

- Coverage ratio equals EBITDA divided by interest expense.

- Fixed charge ratio equals EBITDA divided by interest expense plus preferred dividends.

Average Daily Dollar Trading Volume

- August 2012: \$3.8 billion
- August 2007: \$4.4 billion
- August 2002: \$589 million

Capital Offerings

- REITs have raised \$44.9 billion in initial, debt and equity capital offerings in 2012. \$31.7 billion was raised in secondary equity common and preferred share offerings, \$12.4 billion was raised in unsecured debt offerings, and \$873 million was raised in initial public offerings.

Exhibit 1
Investment Performance:
FTSE NAREIT US Real Estate Index Series

August 31, 2012

Period	FTSE NAREIT All REITs			FTSE NAREIT Composite			FTSE NAREIT Real Estate 50™ ¹			FTSE NAREIT All Equity REITs			FTSE NAREIT Equity REITs			FTSE NAREIT Mortgage REITs		
	Returns (%)		Dividend	Returns (%)		Dividend	Returns (%)		Dividend	Returns (%)		Dividend	Returns (%)		Dividend	Returns (%)		Dividend
	Total	Price	Yield ²	Total	Price	Yield ²	Total	Price	Yield ²	Total	Price	Yield ²	Total	Price	Yield ²	Total	Price	Yield ²
Annual (including current year to date)																		
2007	-17.83	-21.39	5.29	-17.83	-21.42	5.35	-16.34	-19.57	4.77	-15.69	-19.05	4.91	-15.69	-19.05	4.91	-42.35	-47.69	10.52
2008	-37.34	-41.04	8.37	-37.84	-41.56	8.32	-37.31	-40.78	7.22	-37.73	-41.12	7.56	-37.73	-41.12	7.56	-31.31	-40.46	14.47
2009	27.45	19.90	4.63	27.80	20.15	4.69	27.62	20.36	4.48	27.99	21.28	3.73	27.99	21.28	3.73	24.63	8.26	14.86
2010	27.58	21.81	4.23	27.56	21.76	4.31	26.72	21.13	4.09	27.95	23.07	3.54	27.96	23.06	3.58	22.60	7.01	13.03
2011	7.28	2.37	4.83	7.30	2.34	4.90	9.45	4.69	4.60	8.28	4.32	3.82	8.29	4.32	3.83	-2.42	-15.14	14.82
2012	18.62	15.61	4.20	18.31	15.28	4.27	17.48	14.69	3.88	17.54	15.06	3.26	17.18	14.61	3.44	24.92	16.98	12.35
Quarter (including current quarter to date)																		
2011: Q2	2.94	1.79	4.32	2.87	1.70	4.40	3.43	2.34	4.15	2.90	2.00	3.44	3.63	2.71	3.44	2.45	-1.03	13.55
Q3	-14.62	-15.66	5.23	-14.51	-15.57	5.31	-13.88	-14.87	4.97	-15.07	-15.88	4.10	-14.71	-15.52	4.08	-9.86	-13.24	15.44
Q4	14.29	12.79	4.83	14.05	12.55	4.90	14.02	12.61	4.60	15.26	14.07	3.82	15.22	14.03	3.83	3.96	0.00	14.82
2012: Q1	10.41	9.30	4.29	10.36	9.23	4.36	9.82	8.79	4.01	10.49	9.59	3.34	10.79	9.84	3.54	9.08	5.83	13.82
Q2	4.55	3.37	4.20	4.45	3.28	4.27	4.50	3.42	3.91	4.00	3.09	3.29	3.71	2.79	3.46	8.53	5.02	12.92
Q3	2.77	2.33	4.20	2.63	2.19	4.27	2.37	1.95	3.88	2.29	1.85	3.26	1.98	1.51	3.44	5.52	5.25	12.35
Month																		
2012: Mar	4.39	3.73	4.29	4.41	3.73	4.36	4.43	3.84	4.01	4.84	4.41	3.34	5.16	4.69	3.54	0.46	-2.53	13.82
Apr	2.80	2.61	4.20	2.75	2.57	4.27	2.83	2.68	3.92	2.67	2.50	3.27	2.88	2.71	3.45	3.51	3.24	13.27
May	-3.95	-4.21	4.40	-3.91	-4.17	4.48	-3.88	-4.17	4.11	-4.41	-4.69	3.45	-4.54	-4.83	3.64	0.60	0.47	13.19
Jun	5.88	5.16	4.20	5.79	5.07	4.27	5.73	5.10	3.91	5.97	5.53	3.29	5.61	5.15	3.46	4.23	1.25	12.92
Jul	2.30	2.13	4.16	2.36	2.20	4.24	2.49	2.37	3.85	2.17	2.02	3.23	1.95	1.79	3.41	4.05	3.86	12.50
Aug	0.46	0.20	4.20	0.26	-0.01	4.27	-0.12	-0.41	3.88	0.12	-0.17	3.26	0.02	-0.27	3.44	1.41	1.34	12.35
Week (including current week to date)																		
27-Jul-12	1.14	1.08	4.17	1.10	1.04	4.24	1.31	1.28	3.85	1.05	0.98	3.24	0.94	0.87	3.42	1.55	1.51	12.50
3-Aug-12	0.73	0.66	4.14	0.71	0.64	4.22	0.69	0.61	3.83	0.88	0.80	3.21	0.92	0.83	3.39	-0.70	-0.74	12.59
10-Aug-12	-2.09	-2.14	4.25	-2.15	-2.19	4.32	-2.44	-2.48	3.92	-2.30	-2.35	3.29	-2.30	-2.35	3.47	-0.91	-0.90	12.71
17-Aug-12	1.12	0.99	4.23	1.16	1.03	4.29	1.12	0.98	3.90	1.21	1.08	3.27	1.14	1.00	3.45	0.77	0.76	12.65
24-Aug-12	-0.02	-0.02	4.23	-0.10	-0.10	4.30	-0.14	-0.14	3.91	-0.21	-0.21	3.28	-0.10	-0.10	3.46	0.81	0.75	12.54
31-Aug-12	0.92	0.89	4.20	0.86	0.84	4.27	0.81	0.78	3.88	0.78	0.75	3.26	0.67	0.66	3.44	1.46	1.49	12.35
Historical (compound annual rates at month-end)																		
1-Year	21.46	15.95		20.84	15.34		19.57	14.52		20.61	16.34		20.22	15.85		22.33	6.56	
3-Year	23.19	17.63		23.16	17.55		23.80	18.47		23.76	19.20		23.64	19.04		16.02	1.15	
5-Year	3.54	-1.70		3.36	-1.92		3.63	-1.34		3.43	-1.11		3.36	-1.19		6.19	-7.18	
10-Year	10.49	4.65		10.38	4.52		11.54	6.19		11.19	5.88		11.16	5.84		2.53	-9.20	
15-Year	8.81	2.40		8.73	2.31		NA	NA		9.48	3.48		9.46	3.45		2.53	-9.07	
20-Year	10.86	4.00		10.81	3.93		NA	NA		11.38	4.98		11.36	4.96		6.72	-5.27	
25-Year	9.16	1.48		9.12	1.43		NA	NA		10.39	3.39		10.38	3.37		4.70	-7.35	
30-Year	10.60	2.51		10.56	2.46		NA	NA		12.59	5.18		12.58	5.16		5.73	-6.21	
35-Year	11.16	2.65		11.12	2.61		NA	NA		13.06	5.08		13.05	5.07		6.29	-5.65	
40-Year	9.85	1.20		9.82	1.17		NA	NA		12.12	4.05		12.11	4.03		5.42	-6.35	

Source: FTSE™, NAREIT®.

Notes:

¹ The FTSE NAREIT Real Estate 50™ is designed to measure the performance of larger and more frequently traded REITs.

² Dividend yield quoted in percent for the period end.

Disclaimer: The FTSE NAREIT US Real Estate Index Series ("Indexes") is calculated by FTSE International Limited ("FTSE"). All rights in the Indexes vest in FTSE® and the National Association of Real Estate Investment Trusts® ("NAREIT"). FTSE is a trademark of the London Stock Exchange Plc and The Financial Times Limited and is used by FTSE under licence. NAREIT® is a trademark of the National Association of Real Estate Investment Trusts. Neither FTSE nor NAREIT nor their licensors shall be liable (including in negligence) for any loss arising out of use of the Indexes by any person. All data are derived from, and apply only to, publicly traded securities.

Exhibit 2 Investment Performance by Property Sector and Subsector

August 31, 2012

Sector	Number of Constituents	Total Return (%)			Dividend Yield (%)	Market Capitalization (\$)¹	
		2011	Aug-12	2012: YTD		Equity	Implied
FTSE NAREIT All Equity REITs	128	8.28	0.12	17.54	3.26	517,296,626	544,888,637
FTSE NAREIT Equity REITs	123	8.29	0.02	17.18	3.44	461,913,424	489,505,435
Industrial/Office	30	-1.47	1.61	17.14	3.52	85,837,965	91,670,770
Industrial	7	-5.16	4.54	21.83	3.35	21,208,654	21,665,268
Office	18	-0.76	0.38	14.22	3.33	53,944,799	58,577,303
Mixed	5	2.67	2.15	23.11	4.80	10,684,513	11,428,200
Retail	31	12.20	2.52	26.69	3.10	139,209,683	153,537,644
Shopping Centers	18	-0.73	2.58	25.16	3.48	41,359,151	42,100,675
Regional Malls	8	22.00	2.28	27.96	2.74	86,162,901	99,740,709
Free Standing	5	0.43	3.97	22.93	4.28	11,687,632	11,696,260
Residential	18	15.37	-3.48	9.44	2.94	77,955,550	81,085,558
Apartments	15	15.10	-3.49	9.34	2.91	73,723,649	76,486,683
Manufactured Homes	3	20.38	-3.36	11.35	3.56	4,231,902	4,598,875
Diversified	15	2.82	-1.31	12.41	3.98	36,209,294	39,439,844
Lodging/Resorts	14	-14.31	2.98	9.31	2.87	27,092,875	27,554,446
Health Care	11	13.63	-2.51	16.81	4.74	64,093,081	64,484,345
Self Storage	4	35.22	-0.73	15.85	2.90	31,514,974	31,732,828
Timber	4	7.65	4.79	23.97	3.06	27,460,408	27,460,408
Infrastructure	1	-	-2.64	17.61	0.61	27,922,794	27,922,794
FTSE NAREIT Mortgage REITs	27	-2.42	1.41	24.92	12.35	62,127,339	62,193,666
Home Financing	17	-0.87	0.95	24.19	12.96	54,035,549	54,064,747
Commercial Financing	10	-11.34	4.68	29.81	8.30	8,091,791	8,128,919

Source: FTSE^{1M}, NAREIT®.

Notes:

¹ Implied market capitalization is calculated as common shares outstanding plus operating partnership units, multiplied by share price. Data

Exhibit 3 Selected Indicators of Equity Market Performance

(Period ending index levels and percent change)

August 31, 2012

Period	FTSE NAREIT All Equity REITs		S&P 500		Dow Jones Industrials ¹		Russell 2000		NASDAQ Composite ¹		US Treasury 10-Year Note ²	
	Levels	Returns	Levels	Returns	Levels	Returns	Levels	Returns	Levels	Returns	Yield	Change
Annual (including current year to date)												
2002	3,552.10	3.82	1,261.18	-22.10	8,341.63	-16.76	1,543.73	-20.48	1,335.51	-31.53	3.83	-1.24
2003	4,871.12	37.13	1,622.94	28.68	10,453.92	25.32	2,273.20	47.25	2,003.37	50.01	4.27	0.44
2004	6,409.30	31.58	1,799.55	10.88	10,783.01	3.15	2,689.86	18.33	2,175.44	8.59	4.24	-0.03
2005	7,188.85	12.16	1,887.94	4.91	10,717.50	-0.61	2,812.35	4.55	2,205.32	1.37	4.39	0.15
2006	9,709.31	35.06	2,186.13	15.79	12,463.15	16.29	3,328.90	18.37	2,415.29	9.52	4.71	0.32
2007	8,185.75	-15.69	2,306.23	5.49	13,264.82	6.43	3,276.77	-1.57	2,652.28	9.81	4.04	-0.67
2008	5,097.46	-37.73	1,452.98	-37.00	8,776.39	-33.84	2,169.65	-33.79	1,577.03	-40.54	2.25	-1.79
2009	6,524.25	27.99	1,837.50	26.46	10,428.05	18.82	2,759.17	27.17	2,269.15	43.89	3.85	1.60
2010	8,347.58	27.95	2,114.29	15.06	11,577.51	11.02	3,500.15	26.85	2,652.87	16.91	3.30	-0.55
2011	9,039.07	8.28	2,158.94	2.11	12,217.56	5.53	3,353.99	-4.18	2,605.15	-1.80	1.89	-1.41
2012	10,624.91	17.54	2,450.60	13.51	13,090.84	7.15	3,709.52	10.60	3,066.96	17.73	1.57	-0.32
Quarter (including current quarter to date)												
2010: Q4	8,347.58	7.43	2,114.29	10.76	11,577.51	7.32	3,500.15	16.25	2,652.87	12.00	3.30	0.77
2011: Q1	8,973.82	7.50	2,239.44	5.92	12,319.73	6.41	3,778.03	7.94	2,781.07	4.83	3.47	0.17
Q2	9,234.38	2.90	2,241.66	0.10	12,414.34	0.77	3,717.36	-1.61	2,773.52	-0.27	3.18	-0.29
Q3	7,842.64	-15.07	1,930.79	-13.87	10,913.38	-12.09	2,904.55	-21.87	2,415.40	-12.91	1.92	-1.26
Q4	9,039.07	15.26	2,158.94	11.82	12,217.56	11.95	3,353.99	15.47	2,605.15	7.86	1.89	-0.03
2012: Q1	9,987.37	10.49	2,430.67	12.59	13,212.04	8.14	3,771.11	12.44	3,091.57	18.67	2.23	0.34
Q2	10,386.82	4.00	2,363.79	-2.75	12,880.09	-2.51	3,640.11	-3.47	2,935.05	-5.06	1.67	-0.56
Q3	10,624.91	2.29	2,450.60	3.67	13,090.84	1.64	3,709.52	1.91	3,066.96	4.49	1.57	-0.10
Month												
2011: Aug	8,809.33	-5.60	2,076.78	-5.43	11,613.53	-4.36	3,271.26	-8.70	2,579.46	-6.42	2.23	-0.59
Sep	7,842.64	-10.97	1,930.79	-7.03	10,913.38	-6.03	2,904.55	-11.21	2,415.40	-6.36	1.92	-0.31
Oct	8,962.35	14.28	2,141.81	10.93	11,955.01	9.54	3,344.17	15.14	2,684.41	11.14	2.17	0.25
Nov	8,625.48	-3.76	2,137.08	-0.22	12,045.68	0.76	3,331.98	-0.36	2,620.34	-2.39	2.08	-0.09
Dec	9,039.07	4.79	2,158.94	1.02	12,217.56	1.43	3,353.99	0.66	2,605.15	-0.58	1.89	-0.19
2012: Jan	9,613.80	6.36	2,255.69	4.48	12,632.91	3.40	3,590.96	7.07	2,813.84	8.01	1.83	-0.06
Feb	9,526.22	-0.91	2,353.23	4.32	12,952.07	2.53	3,676.90	2.39	2,966.89	5.44	1.98	0.15
Mar	9,987.37	4.84	2,430.67	3.29	13,212.04	2.01	3,771.11	2.56	3,091.57	4.20	2.23	0.25
Apr	10,254.33	2.67	2,415.42	-0.63	13,213.63	0.01	3,712.86	-1.54	3,046.36	-1.46	1.95	-0.28
May	9,802.04	-4.41	2,270.25	-6.01	12,393.45	-6.21	3,467.10	-6.62	2,827.34	-7.19	1.59	-0.36
Jun	10,386.82	5.97	2,363.79	4.12	12,880.09	3.93	3,640.11	4.99	2,935.05	3.81	1.67	0.08
Jul	10,612.21	2.17	2,396.62	1.39	13,008.68	1.00	3,589.81	-1.38	2,939.52	0.15	1.51	-0.16
Aug	10,624.91	0.12	2,450.60	2.25	13,090.84	0.63	3,709.52	3.33	3,066.96	4.34	1.57	0.06
Historical (compound annual rates)												
1-Year	20.61		18.00		12.72		13.40		18.90			
3-Year	23.76		13.62		11.29		13.89		15.14			
5-Year	3.43		1.28		-0.40		1.90		3.39			
10-Year	11.19		6.51		4.21		9.00		8.84			
15-Year	9.48		4.89		3.67		5.79		4.49			
20-Year	11.38		8.43		7.20		9.03		8.84			
25-Year	10.39		8.40		6.58		7.94		7.93			
30-Year	12.59		11.39		9.33		10.37		9.93			
35-Year	13.06		11.21		8.08		-		10.27			
40-Year	12.12		9.90		6.74		-		8.22			

Source: NAREIT®, FactSet.

¹ Price-only returns

² Ten-year constant maturity Treasury note

Exhibit 4 Historical Offerings of Securities

August 31, 2012

Period	Total		Initial Public Offering		Secondary Equity				Secondary Debt			
	Number	Capital Raised ¹	Number	Capital Raised ¹	Common Shares		Preferred Shares		Unsecured Debt		Secured Debt	
					Number	Capital Raised ¹	Number	Capital Raised ¹	Number	Capital Raised ¹	Number	Capital Raised ¹
Annual Totals (including current year to date)												
2004	266	38,482	29	7,980	79	7,338	61	5,858	97	17,306	0	0
2005	259	37,492	11	3,789	71	8,521	36	3,095	105	16,330	36	5,758
2006	204	49,018	5	2,271	75	15,695	39	4,239	82	25,261	3	1,551
2007	129	36,031	4	1,820	56	11,854	26	4,202	43	18,155	0	0
2008	82	17,991	2	491	60	11,132	9	1,195	11	5,173	0	0
2009	130	34,656	9	2,990	87	21,244	0	0	34	10,422	0	0
2010	173	47,450	9	1,975	91	23,629	17	2,617	56	19,230	0	0
2011	164	51,280	8	2,307	92	31,075	31	4,108	33	13,790	0	0
2012	165	44,933	5	873	74	23,461	55	8,213	31	12,386	0	0
Quarterly Totals												
2011: Q2	54	13,697	4	953	28	7,636	11	1,358	11	3,750	0	0
Q3	23	7,932	2	414	13	6,290	7	978	1	250	0	0
Q4	26	7,879	0	0	14	3,542	5	288	7	4,050	0	0
2012: Q1	65	21,206	1	198	28	10,634	23	4,049	13	6,325	0	0
Q2	52	12,296	3	616	25	5,617	13	1,537	11	4,525	0	0
Q3	48	11,431	1	59	21	7,209	19	2,627	7	1,536	0	0
Monthly Totals												
2010: Nov	15	7,469	0	0	6	3,994	1	75	8	3,400	0	0
December	16	4,718	0	0	13	4,153	2	165	1	400	0	0
2011: Jan	19	6,916	1	648	10	3,370	3	247	5	2,650	0	0
February	8	2,722	1	292	7	2,431	0	0	0	0	0	0
March	34	12,135	0	0	20	7,807	5	1,237	9	3,090	0	0
April	17	3,139	2	257	6	1,006	7	901	2	975	0	0
May	22	5,471	1	569	11	2,445	4	457	6	2,000	0	0
June	15	5,087	1	127	11	4,185	0	0	3	775	0	0
July	11	4,861	1	230	7	4,107	3	523	0	0	0	0
August	5	1,634	1	184	2	1,175	1	25	1	250	0	0
September	7	1,438	0	0	4	1,008	3	430	0	0	0	0
October	8	2,001	0	0	4	1,760	4	242	0	0	0	0
November	14	4,434	0	0	8	1,638	1	46	5	2,750	0	0
December	4	1,444	0	0	2	144	0	0	2	1,300	0	0
2012: Jan	21	5,546	0	0	11	3,051	8	1,645	2	850	0	0
February	17	5,146	0	0	7	2,498	6	973	4	1,675	0	0
March	27	10,514	1	198	10	5,085	9	1,431	7	3,800	0	0
April	14	2,900	2	456	4	1,092	5	352	3	1,000	0	0
May	21	5,420	1	160	12	2,515	5	719	3	2,025	0	0
June	17	3,976	0	0	9	2,010	3	466	5	1,500	0	0
July	28	7,408	1	59	8	4,257	13	1,642	6	1,450	0	0
August	20	4,023	0	0	13	2,952	6	985	1	86	0	0

Source: SNL Financial, NAREIT®.

Notes:

¹ Data presented in millions of dollars.

Exhibit 5:
Equity REIT Dividend Yield vs. 10-Year Constant Maturity Treasury Yield

January 1990 - August 2012

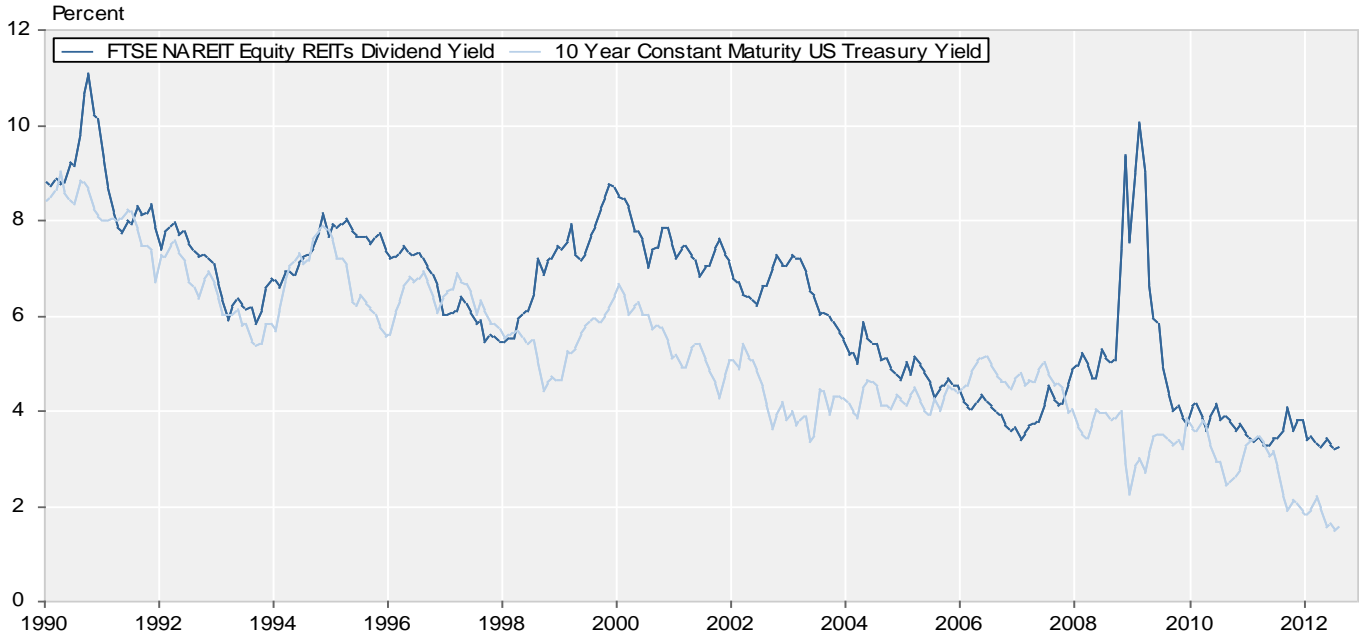
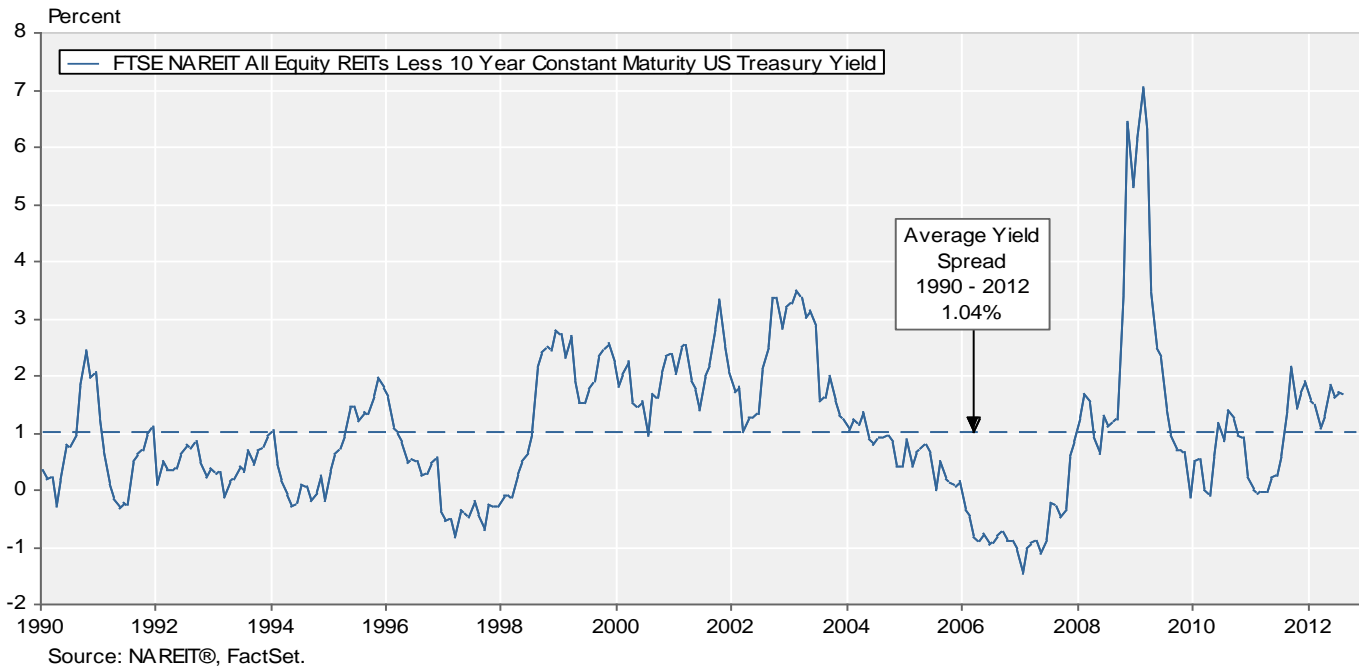


Exhibit 6:
Monthly Equity REIT Dividend Yield Spread

January 1990 - August 2012

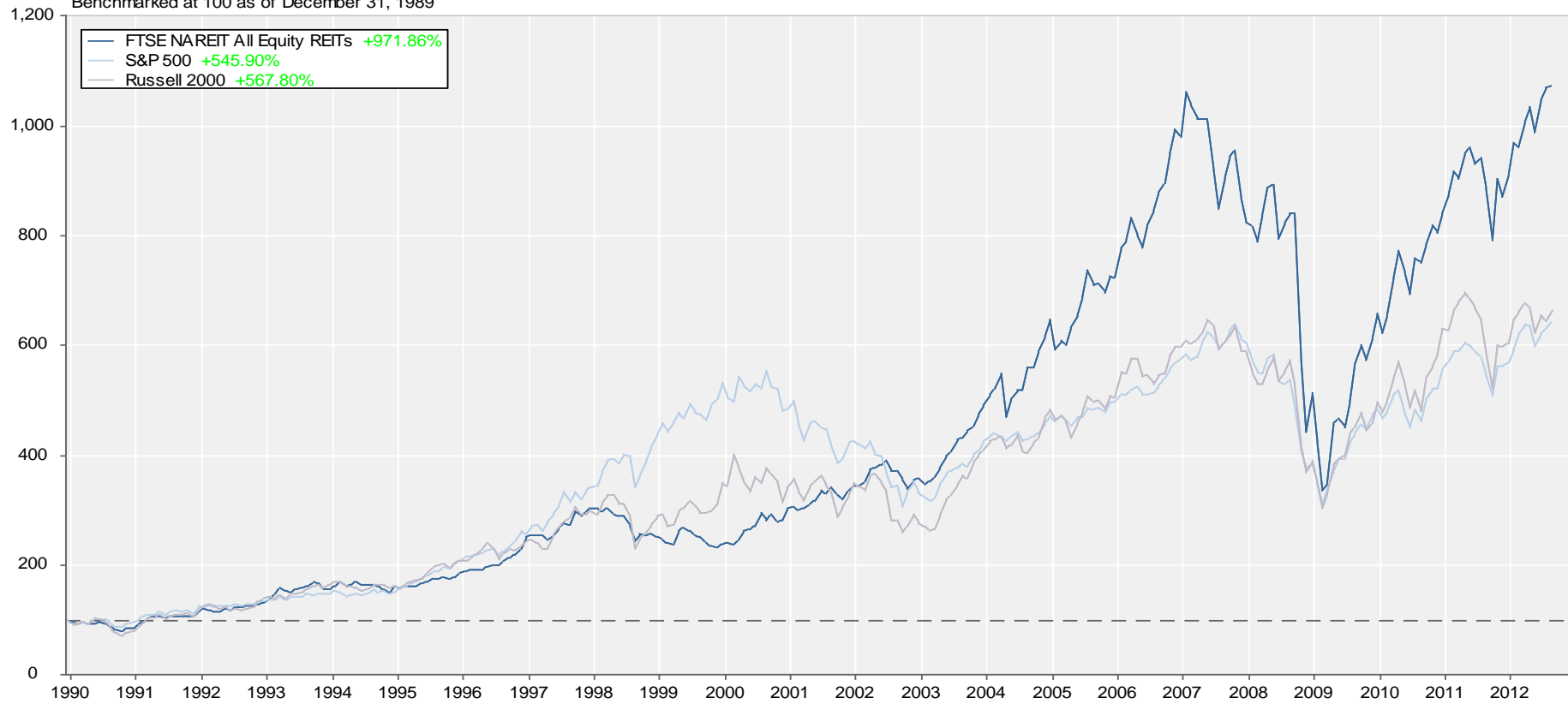


Total Return Index Comparison

Monthly Returns

December 1989 - August 2012

Benchmarked at 100 as of December 31, 1989

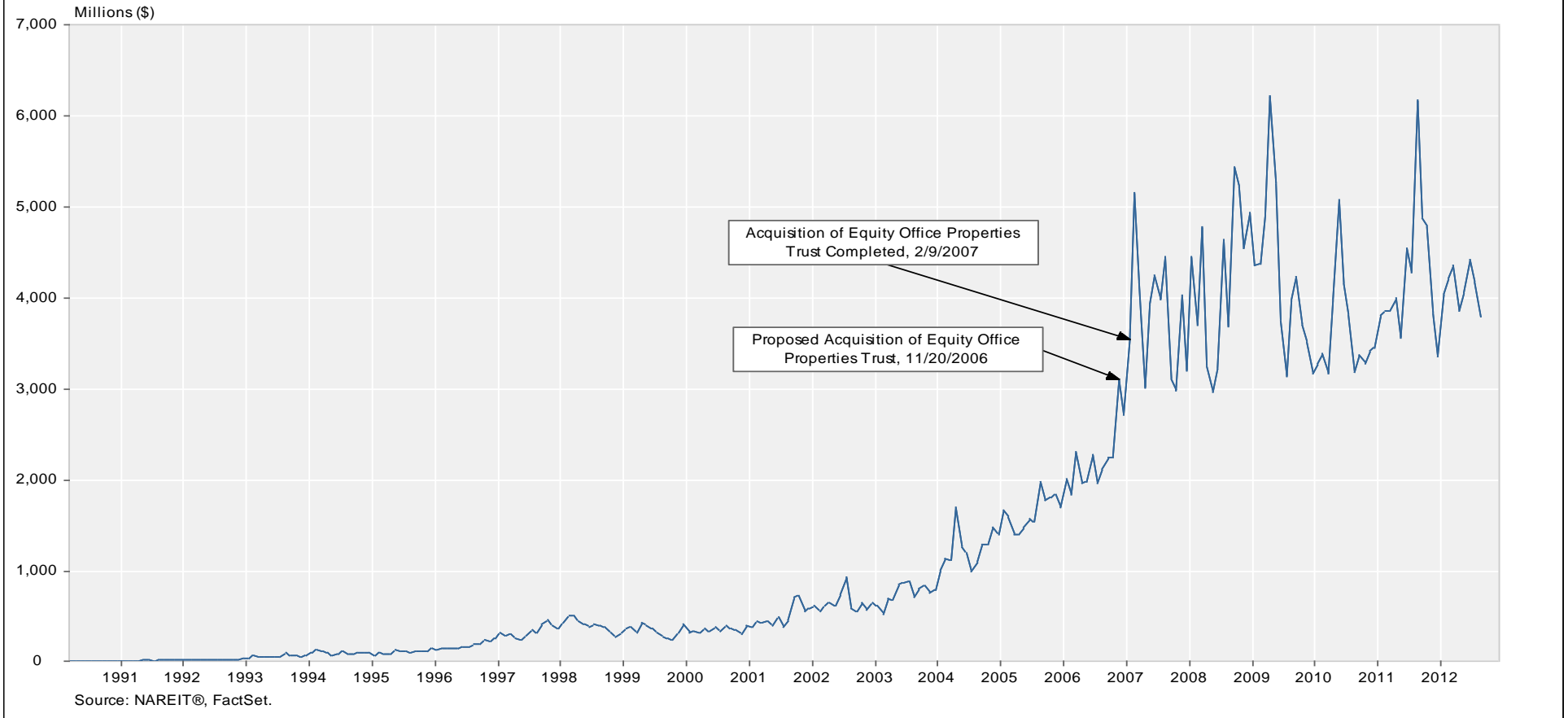


Source: NAREIT®, FactSet.

Average Daily Dollar Trading Volume

FTSE NAREIT All REITs

March 1990 - August 2012



Comparative Total Return Investment Performance
(Data in percent through August 31, 2012)

Period	FTSE NAREIT	Dow Jones		NASDAQ ¹		Standard & Poor's				Russell 2000			Bond Indexes		NCREIF	
	Equity	Industrials ¹	US Total Stock Market	Composite	100	Citigroup 500 Value	Citigroup 500	Citigroup 500 Growth	Utilities	Value	2000	Growth	ML Corp/Govt	ML Mortgage	Hi Yield Corp	NPI
	Series Beginning> (Jan. 1972)	(Dec. 1926)	(Jan. 1972)	(Jan. 1972)	(Feb. 1985)	(Jan. 1975)	(Jan. 1972)	(Jan. 1975)	(Sep. 1989)	(Jan. 1979)	(Jan. 1979)	(Jan. 1979)	(Dec. 1975)	(Jan. 1976)	(Jan. 1972)	(Dec. 1977)
Annual Returns (including current year to date)																
2002	3.82	-16.76	-17.34	-31.52	-37.58	-16.61	-22.10	-28.10	-29.99	-9.14	-20.48	-28.33	10.95	9.42	-1.37	6.75
2003	37.13	25.32	31.64	50.01	49.52	30.35	28.68	27.09	26.26	46.03	47.25	48.54	4.54	3.29	28.96	9.00
2004	31.58	3.15	17.90	8.59	10.44	15.02	10.88	6.99	24.28	22.25	18.33	14.31	4.15	4.74	11.14	14.49
2005	12.17	-0.61	6.32	1.37	1.48	8.70	4.91	1.15	16.84	-1.26	4.55	5.22	2.52	2.63	2.74	20.06
2006	35.06	16.29	15.87	9.52	6.79	20.78	15.79	10.98	20.99	30.94	18.37	13.35	3.83	5.31	11.87	16.60
2007	-15.69	6.43	5.70	9.81	18.67	1.99	5.49	9.13	19.38	-9.78	-1.57	7.05	7.27	6.96	1.88	15.85
2008	-37.73	-33.84	-37.23	-40.54	-41.89	-39.22	-37.00	-34.92	-28.98	-28.92	-33.79	-38.54	4.95	8.30	-26.16	-6.46
2009	27.99	18.82	28.57	43.89	53.54	26.46	21.18	31.57	11.91	20.58	27.17	34.47	4.84	5.76	58.21	-16.85
2010	27.95	11.02	17.49	16.91	19.22	15.10	15.06	15.05	5.46	24.50	26.85	29.09	6.83	5.67	15.12	13.11
2011	8.28	5.53	1.08	-1.80	2.70	-0.48	2.11	4.65	19.91	-5.50	-4.18	-2.91	8.61	6.14	4.98	14.26
2012	17.54	7.15	13.24	17.73	21.71	12.26	13.51	14.55	3.06	10.43	10.60	10.75	4.57	2.62	10.59	-
Quarterly Returns																
2011: Q1	7.50	6.41	6.37	4.83	5.46	6.80	5.92	5.07	2.74	6.60	7.94	9.24	0.34	0.52	3.88	3.36
Q2	2.90	0.77	-0.01	-0.27	-0.60	-1.47	0.10	1.64	6.14	-2.65	-1.61	-0.59	2.34	2.33	1.05	3.94
Q3	-15.07	-12.09	-15.23	-12.91	-8.00	-16.30	-13.87	-11.56	1.55	-21.47	-21.87	-22.25	4.56	2.32	-6.06	3.30
Q4	15.26	11.95	12.12	7.86	6.48	12.98	11.82	10.81	8.28	15.97	15.48	14.99	1.16	0.85	6.46	2.96
2012: Q1	10.49	8.14	12.90	18.67	20.96	12.97	12.59	12.27	-1.62	11.59	12.44	13.28	0.17	0.60	5.34	2.59
Q2	4.00	-2.51	-3.10	-5.06	-5.06	-3.58	-2.75	-2.05	6.55	-3.01	-3.47	-3.94	2.62	1.11	1.83	2.68
Q3	1.03	4.32	6.18	6.17	7.01	6.30	6.35	6.40	-0.53	5.67	5.25	4.84	1.80	1.13	4.53	-
Monthly Returns																
2012: Apr	2.67	0.01	-0.63	-1.46	-1.15	-1.33	-0.63	-0.04	1.82	-1.45	-1.54	-1.64	1.35	0.68	1.05	-
May	-4.41	-6.21	-6.20	-7.19	-7.30	-6.67	-6.01	-5.46	0.57	-6.11	-6.62	-7.13	1.25	0.33	-1.31	-
June	5.97	3.93	3.95	3.81	3.60	4.71	4.12	3.64	4.05	4.82	4.99	5.16	0.00	0.09	2.11	-
July	2.17	1.00	1.02	0.15	1.02	0.86	1.39	1.83	2.54	-1.02	-1.38	-1.74	1.65	0.79	1.90	-
August	0.12	0.63	2.47	4.34	4.91	2.19	2.25	2.31	-4.12	3.08	3.33	3.59	0.08	0.10	1.17	-
Compound Annual Returns																
Complete History	12.16	6.83	10.34	8.43	11.90	12.18	10.01	10.82	7.69	13.18	11.33	9.30	8.22	8.32	9.27	9.03
1-Year	20.61	12.72	17.12	18.90	23.70	17.34	18.00	18.55	11.80	14.08	13.40	12.72	6.70	3.59	13.89	12.04
3-Year	23.76	11.29	14.01	15.14	19.48	11.40	13.62	15.72	12.33	12.24	13.89	15.49	7.01	5.27	14.47	8.82
5-Year	3.43	-0.40	1.70	3.39	6.87	-1.57	1.28	4.01	2.90	0.73	1.90	2.94	6.73	6.52	9.60	2.51
10-Year	11.19	4.21	8.31	8.84	11.42	6.23	6.51	6.68	9.62	8.77	9.00	9.81	5.59	5.37	10.69	8.29
15-Year	9.48	3.67	5.90	4.49	6.54	4.68	4.89	4.56	6.75	7.48	5.79	4.00	6.34	6.15	7.05	9.42
20-Year	11.38	7.20	9.14	8.85	11.79	8.24	8.43	8.14	7.10	10.74	9.03	7.15	6.49	6.34	8.08	8.41
25-Year	10.39	6.58	8.86	7.93	10.89	8.04	8.40	8.32	-	9.62	7.94	6.07	7.41	7.43	8.64	7.39
30-Year	12.59	9.33	11.58	9.96	-	11.26	11.39	11.06	-	12.31	10.36	8.24	8.50	8.75	10.36	7.96
35-Year	13.06	8.08	11.64	10.27	-	11.19	11.21	10.75	-	-	-	-	8.11	8.24	9.82	-
40-Year	12.12	6.74	10.22	8.22	-	-	9.90	-	-	-	-	-	-	-	9.40	-
Annualized Volatility of Returns																
Complete History	17.35	15.48	16.02	21.84	25.77	14.97	15.60	16.93	15.09	17.90	20.02	23.38	5.73	6.50	9.29	7.73
1-Year	6.49	4.29	5.28	5.76	5.51	5.34	4.98	4.68	2.50	6.67	6.92	7.20	0.80	0.40	2.81	0.32
3-Year	19.82	13.86	16.10	18.27	17.91	16.42	15.48	15.04	10.04	20.80	21.13	21.71	3.29	2.05	7.69	8.58
5-Year	32.74	17.27	19.63	22.06	22.47	20.77	19.02	18.08	14.49	24.77	24.53	24.84	4.52	2.78	14.03	13.51
10-Year	25.67	14.85	15.79	19.38	20.48	16.77	15.57	15.05	13.97	20.72	20.41	21.16	4.47	2.69	10.73	10.96
15-Year	22.32	15.90	16.74	26.23	28.78	16.29	16.37	18.03	16.70	19.61	21.48	25.21	4.24	2.65	10.11	9.20
20-Year	20.05	14.85	15.36	23.92	26.55	14.95	15.09	16.68	15.45	17.68	19.62	23.30	4.30	2.86	8.99	8.42
25-Year	18.91	15.43	15.84	23.47	26.29	15.24	15.60	17.15	15.09	18.27	20.19	23.57	4.42	3.66	9.07	8.24
30-Year	17.76	15.44	15.78	22.61	-	15.27	15.58	17.02	-	17.82	19.83	23.14	4.89	4.63	8.96	7.71
35-Year	17.43	15.24	15.80	22.18	-	15.01	15.43	16.92	-	-	-	-	5.75	6.59	9.17	-
40-Year	17.31	15.57	16.12	21.97	-	-	15.70	-	-	-	-	-	-	-	9.34	-

¹ Price only returns
Source: NAREIT®, FactSet.

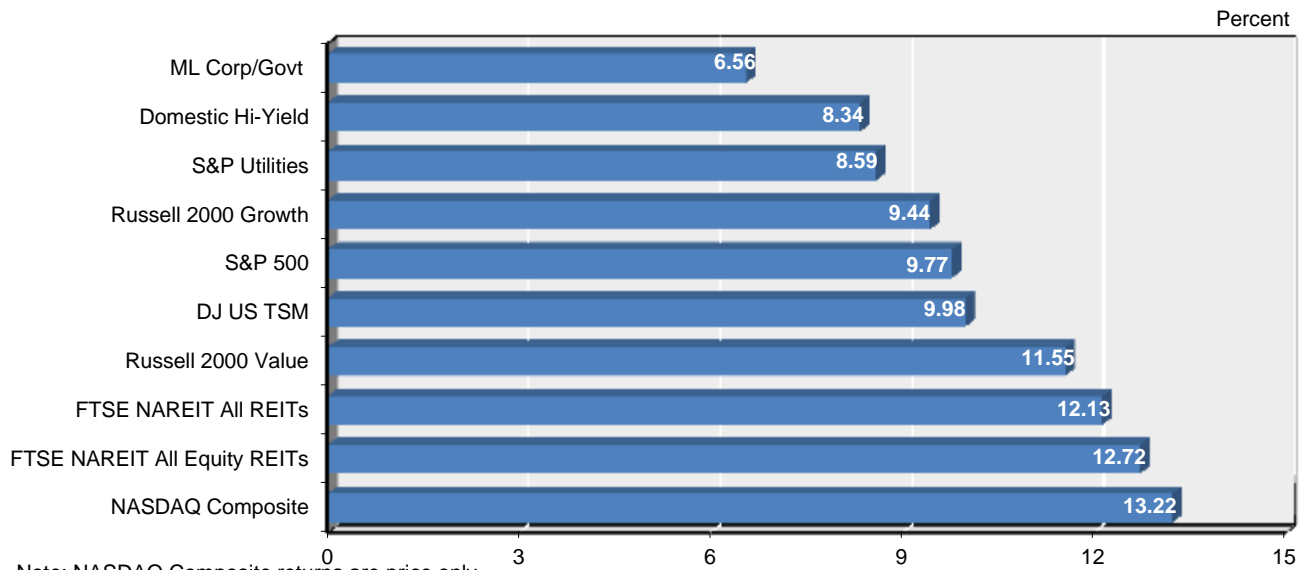
Comparative Total Return Investment Correlation

	FTSE NAREIT All Equity REITs	DJ US Total Stock Market	NASDAQ Composite ¹	NASDAQ 100 ¹	S&P 500/ Citigroup Value	S&P 500	S&P 500/ Citigroup Growth	S&P Utilities	Russell 2000 Value	Russell 2000	Russell 2000 Growth	ML Corp/Govt Bond	ML Mortgage	Domestic High Yield Corp Bond	Dow Jones Industrial Average ¹
Period For Upper Right: August 2002 - August 2012															
FTSE NAREIT All Equity REITs	1.00	0.75	0.67	0.60	0.76	0.73	0.68	0.42	0.83	0.79	0.73	0.14	0.01	0.71	0.68
DJ US Total Stock Market	0.57	1.00	0.95	0.90	0.98	1.00	0.98	0.56	0.93	0.94	0.93	-0.05	-0.13	0.71	0.96
NASDAQ Composite ¹	0.46	0.84	1.00	0.98	0.90	0.94	0.94	0.44	0.88	0.92	0.94	-0.13	-0.20	0.65	0.89
NASDAQ 100 ¹	0.38	0.84	0.97	1.00	0.85	0.90	0.92	0.42	0.80	0.85	0.89	-0.15	-0.21	0.62	0.86
S&P 500/ Citigroup Value	0.63	0.86	0.74	0.71	1.00	0.98	0.93	0.55	0.92	0.91	0.88	-0.03	-0.11	0.66	0.96
S&P 500	0.56	0.90	0.84	0.83	0.96	1.00	0.98	0.57	0.90	0.91	0.90	-0.04	-0.12	0.69	0.97
S&P 500/ Citigroup Growth	0.47	0.87	0.87	0.88	0.87	0.97	1.00	0.57	0.85	0.88	0.89	-0.05	-0.11	0.69	0.95
S&P Utilities	0.35	0.43	0.21	0.21	0.51	0.44	0.35	1.00	0.46	0.47	0.46	0.29	0.17	0.47	0.53
Russell 2000 Value	0.75	0.79	0.76	0.66	0.84	0.81	0.73	0.41	1.00	0.99	0.95	-0.06	-0.17	0.66	0.85
Russell 2000	0.65	0.82	0.89	0.80	0.81	0.83	0.79	0.35	0.96	1.00	0.99	-0.09	-0.21	0.68	0.85
Russell 2000 Growth	0.55	0.81	0.93	0.86	0.75	0.80	0.80	0.30	0.87	0.98	1.00	-0.12	-0.23	0.68	0.83
ML Corp/Govt Bond	0.16	0.04	0.06	0.02	0.17	0.19	0.18	0.28	0.08	0.05	0.03	1.00	0.82	0.18	-0.07
ML Mortgage	0.09	0.02	0.06	0.01	0.17	0.18	0.18	0.19	0.07	0.04	0.02	0.87	1.00	0.02	-0.11
Domestic High Yield Corp Bond	0.60	0.58	0.54	0.49	0.58	0.58	0.54	0.33	0.62	0.61	0.57	0.26	0.23	1.00	0.60
Dow Jones Industrial Average ¹	0.53	0.84	0.75	0.73	0.94	0.95	0.90	0.43	0.78	0.77	0.73	0.14	0.16	0.53	1.00
Period For Lower Left: August 1982 - August 2012															

¹ Price only returns.
 Source: NAREIT®, FactSet.

20-Year Average Annual Total Return

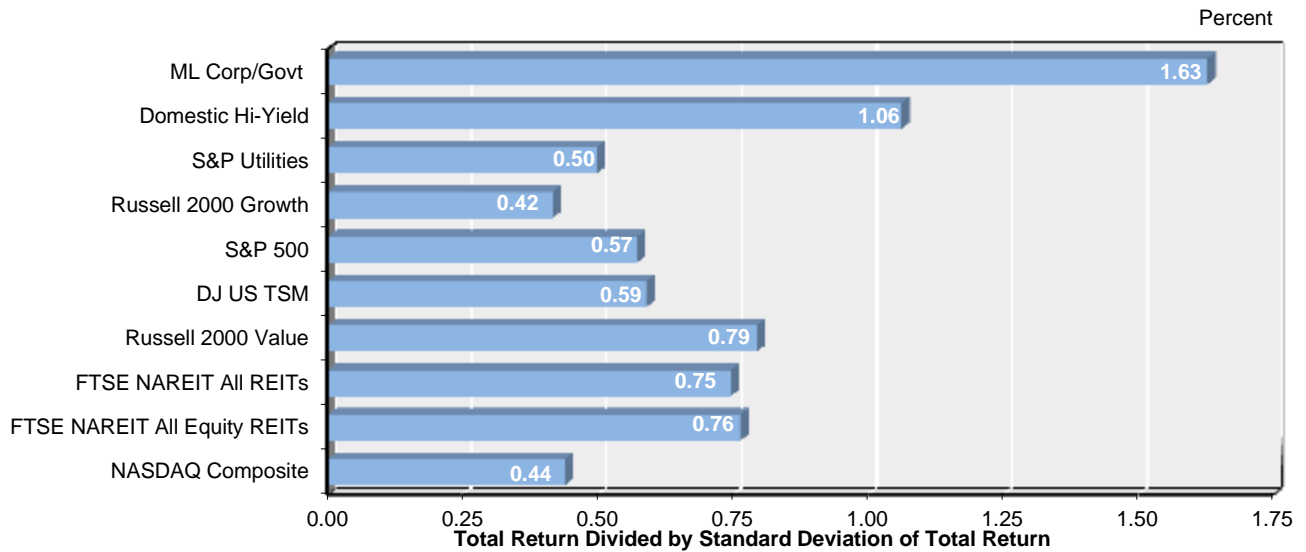
August 1992 - August 2012



Note: NASDAQ Composite returns are price only.
 Source: NAREIT®, FactSet.

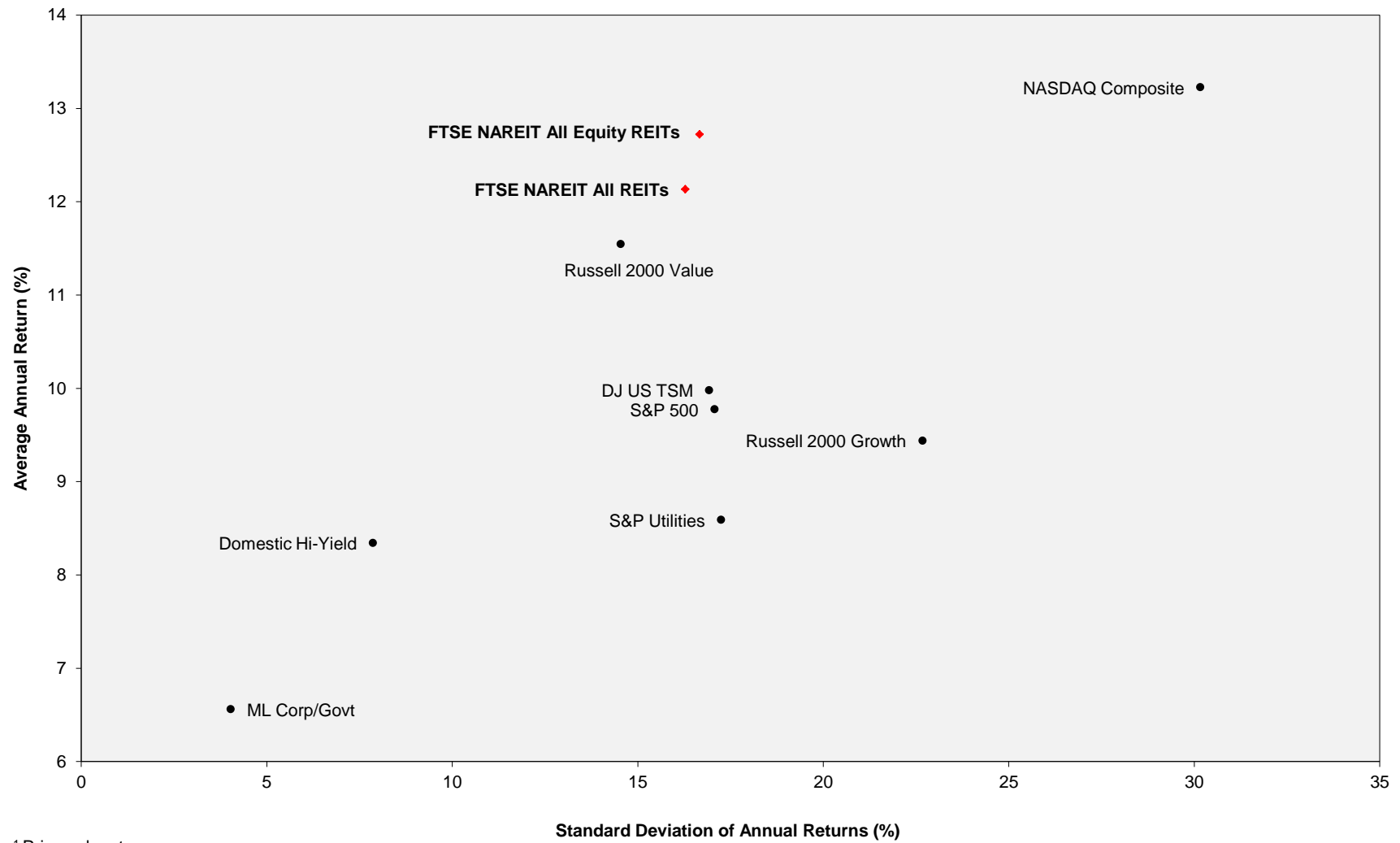
Adjusted 20-Year Average Annual Total Return

August 1992 - August 2012



Note: NASDAQ Composite returns are price only.
 Source: NAREIT®, FactSet.

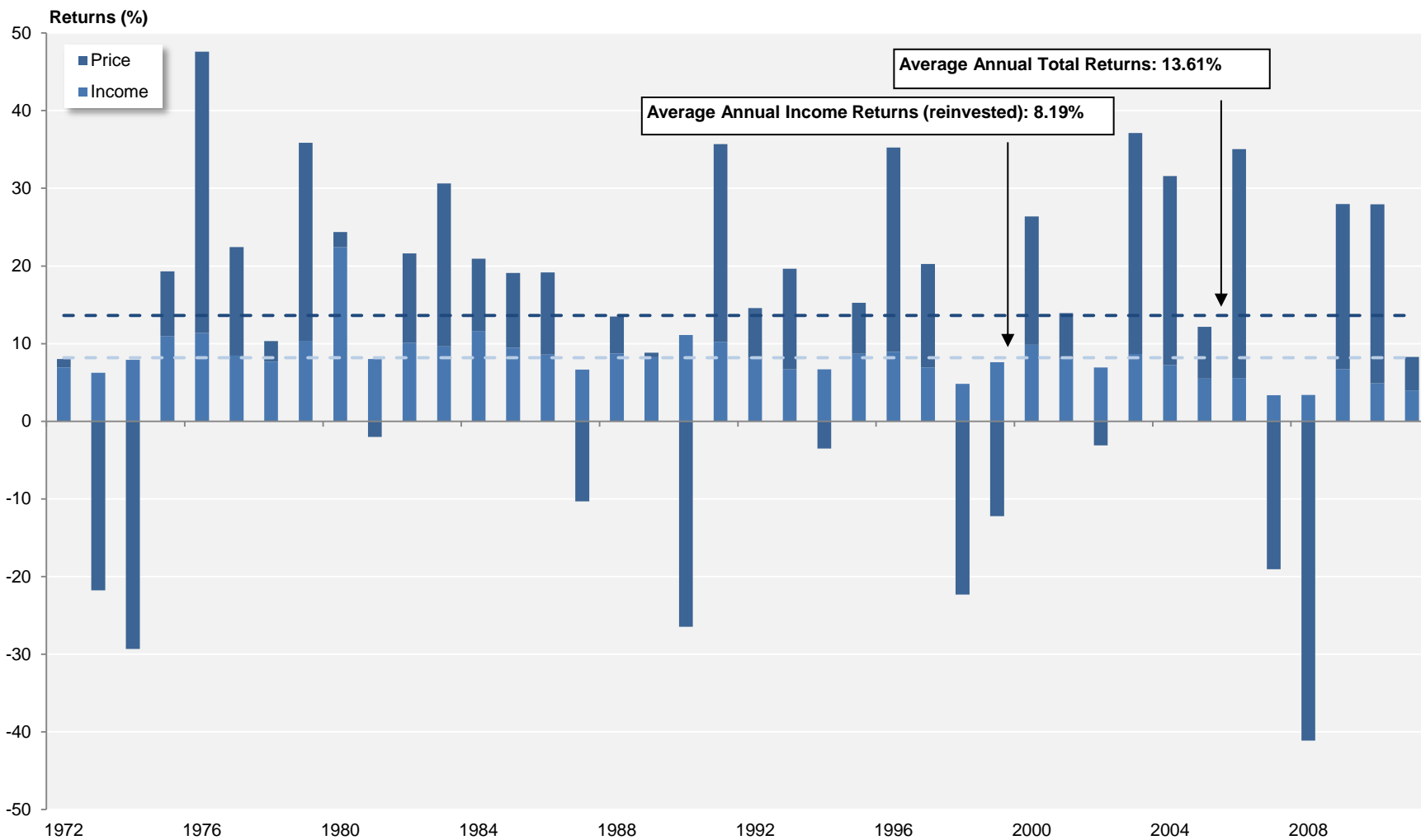
**20-Year Average Annual Total Return v.
 20-Year Standard Deviation of Annual Total Returns**
 August 1992 - August 2012



¹ Price only returns.
 Source: NAREIT®, FactSet.

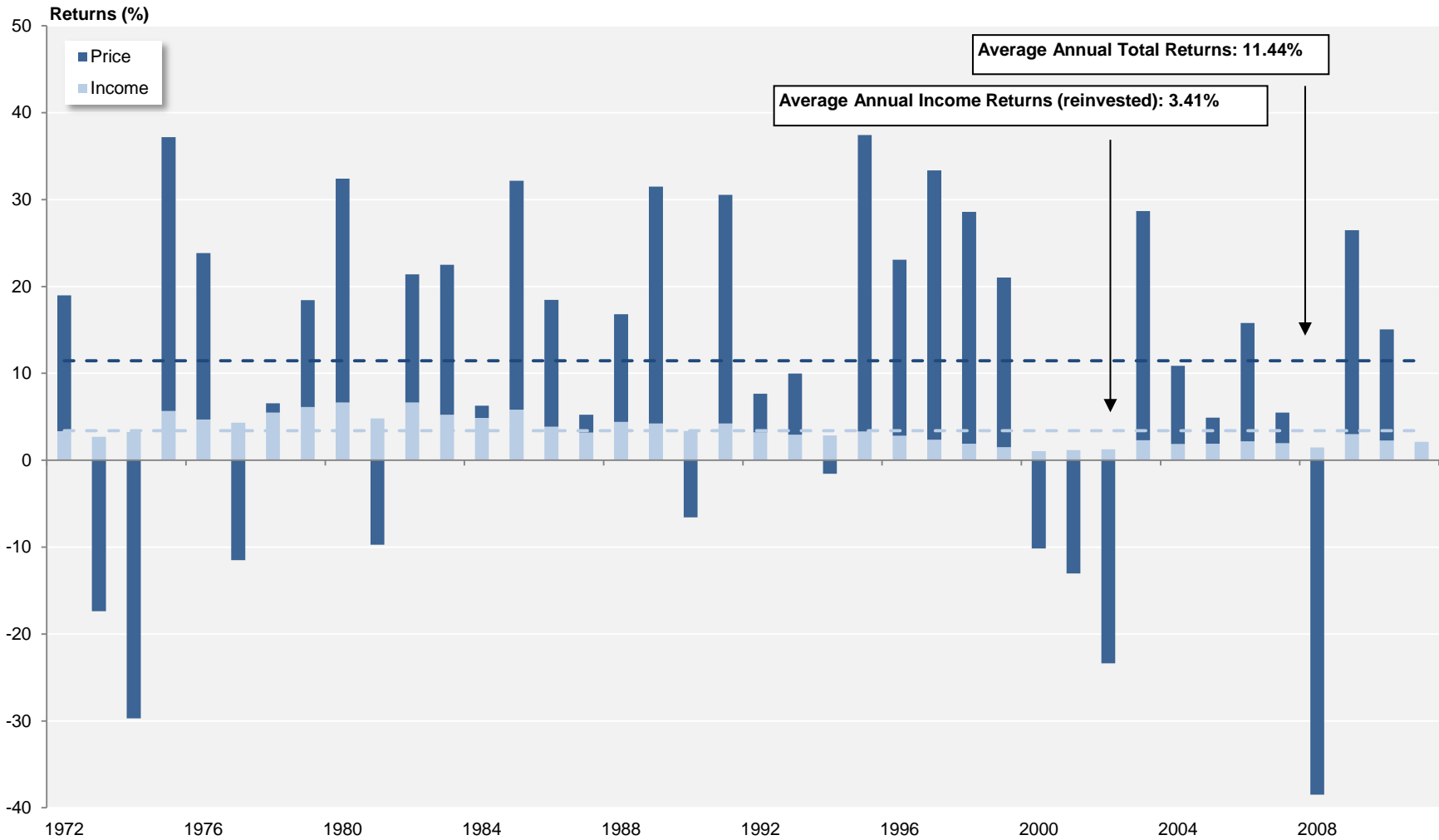
FTSE NAREIT All Equity REITs

Annual Returns
 1972 - 2011



Source: FTSE™, NAREIT®.

S&P 500 Annual Returns 1972 - 2011

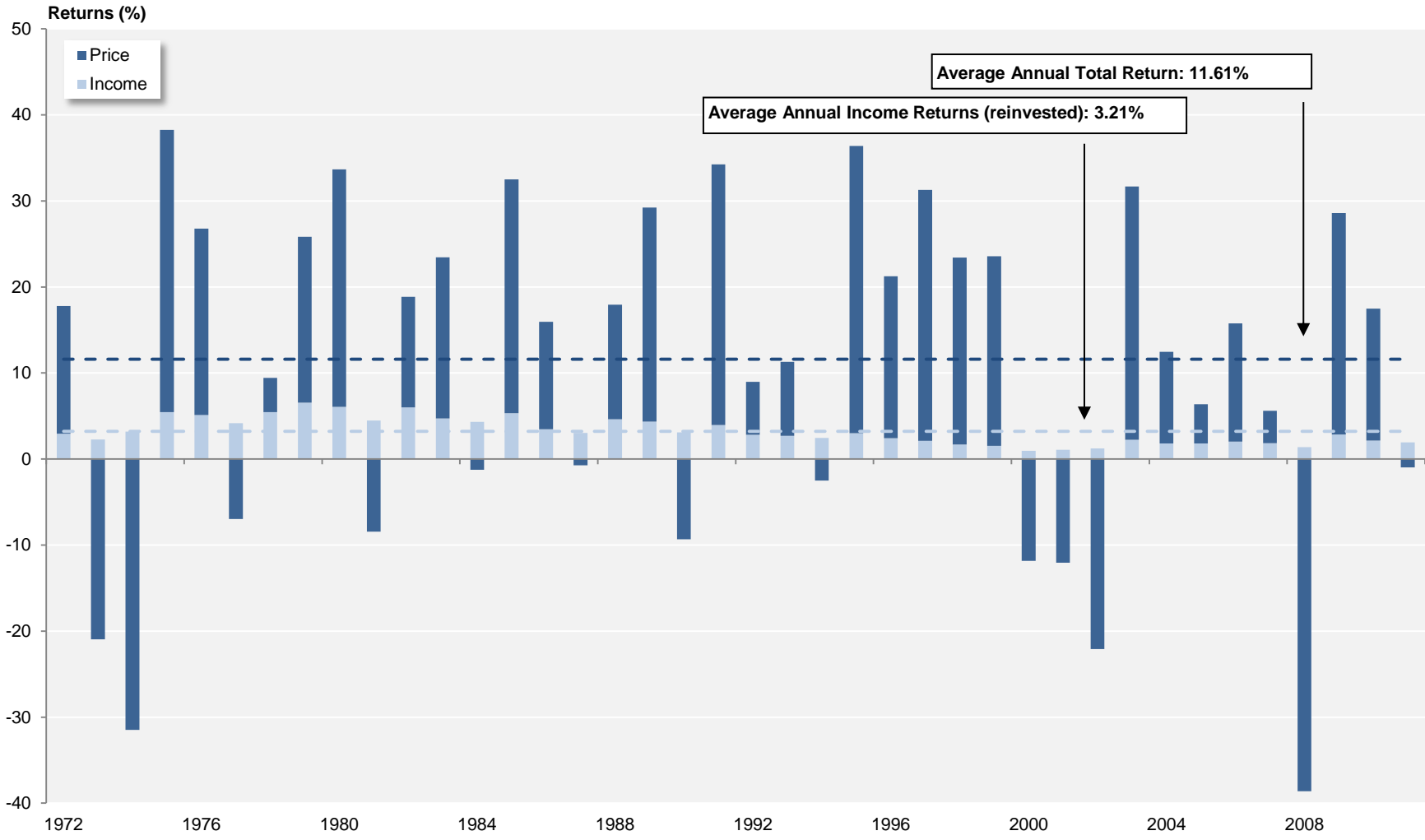


Source: NAREIT®, FactSet.

Dow Jones US Total Stock Market

Annual Returns

1972 - 2011



Source: NAREIT®, FactSet.

Annual Returns for the FTSE NAREIT US Real Estate Index Series
 1972-2011

Year	FTSE NAREIT All REITs				FTSE NAREIT Composite				FTSE NAREIT Real Estate 50™				FTSE NAREIT All Equity REITs				FTSE NAREIT Equity REITs ¹				FTSE NAREIT Mortgage REITs			
	Total		Price		Total		Price		Total		Price		Total		Price		Total		Price		Total		Price	
	Return (%)	Index	Return (%)	Index	Return (%)	Index	Return (%)	Index	Return (%)	Index	Return (%)	Index	Return (%)	Index	Return (%)	Index	Return (%)	Index	Return (%)	Index	Return (%)	Index	Return (%)	Index
1971		100.00		100.00		100.00		100.00		100.00		100.00		100.00		100.00		100.00		100.00		100.00		100.00
1972	11.19	111.19	3.84	103.84	11.19	111.19	3.84	103.84					8.01	108.01	1.08	101.08	8.01	108.01	1.08	101.08	12.17	112.17	4.34	104.34
1973	-27.22	80.93	-33.11	69.46	-27.22	80.93	-33.11	69.46					-15.52	91.25	-21.78	79.07	-15.52	91.25	-21.78	79.07	-36.26	71.50	-42.05	60.47
1974	-42.23	46.75	-49.55	35.04	-42.23	46.75	-49.55	35.04					-21.40	71.72	-29.33	55.88	-21.40	71.72	-29.33	55.88	-45.32	39.09	-53.96	27.84
1975	36.34	63.74	22.20	42.82	36.34	63.74	22.20	42.82					19.30	85.56	8.34	60.54	19.30	85.56	8.34	60.54	40.79	55.04	24.51	34.66
1976	48.97	94.96	36.53	58.47	48.97	94.96	36.53	58.47					47.59	126.28	36.21	82.46	47.59	126.28	36.21	82.46	51.71	83.50	38.41	47.97
1977	19.08	113.07	10.10	64.37	19.08	113.07	10.10	64.37					22.42	154.59	13.97	93.98	22.42	154.59	13.97	93.98	17.82	98.38	8.16	51.89
1978	-1.64	111.21	-9.42	58.31	-1.64	111.21	-9.42	58.31					10.34	170.57	2.66	96.48	10.34	170.57	2.66	96.48	-9.97	88.57	-17.86	42.62
1979	30.53	145.16	19.35	69.59	30.53	145.16	19.35	69.59					35.86	231.73	25.49	121.07	35.86	231.73	25.49	121.07	16.56	103.24	4.26	44.44
1980	28.02	185.84	11.07	77.30	28.02	185.84	11.07	77.30					24.37	288.20	1.95	123.42	24.37	288.20	1.95	123.42	16.80	120.58	3.29	45.90
1981	8.58	201.78	-1.02	76.51	8.58	201.78	-1.02	76.51					6.00	305.50	-2.03	120.92	6.00	305.50	-2.03	120.92	7.07	129.11	-5.54	43.36
1982	31.64	265.62	19.19	91.19	31.64	265.62	19.19	91.19					21.60	371.49	11.49	134.81	21.60	371.49	11.49	134.81	48.64	191.91	31.27	56.91
1983	25.47	333.28	15.11	104.97	25.47	333.28	15.11	104.97					30.64	485.30	21.01	163.13	30.64	485.30	21.01	163.13	16.90	224.34	5.56	60.08
1984	14.82	382.65	3.53	108.67	14.82	382.65	3.53	108.67					20.93	586.86	9.30	178.30	20.93	586.86	9.30	178.30	7.26	240.64	-4.54	57.35
1985	5.92	405.30	-3.52	104.84	5.92	405.30	-3.52	104.84					19.10	698.93	9.62	195.45	19.10	698.93	9.62	195.45	-5.20	228.11	-15.33	48.55
1986	19.18	483.03	9.24	114.53	19.18	483.03	9.24	114.53					19.16	832.83	10.56	216.10	19.16	832.83	10.56	216.10	19.21	271.95	7.64	52.26
1987	-10.67	431.49	-19.01	92.76	-10.67	431.49	-19.01	92.76					-3.64	802.51	-10.31	193.82	-3.64	802.51	-10.31	193.82	-15.67	229.34	-25.70	38.83
1988	11.36	480.49	1.24	93.92	11.36	480.49	1.24	93.92					13.49	910.74	4.77	203.07	13.49	910.74	4.77	203.07	7.30	246.09	-5.12	36.84
1989	-1.81	471.78	-12.06	82.59	-1.81	471.78	-12.06	82.59					8.84	991.26	0.58	204.24	8.84	991.26	0.58	204.24	-15.90	206.95	-26.19	27.20
1990	-17.35	389.95	-28.49	59.05	-17.35	389.95	-28.49	59.05					-15.35	839.09	-26.45	150.21	-15.35	839.09	-26.45	150.21	-18.37	168.94	-29.18	19.26
1991	35.68	529.08	23.10	72.69	35.68	529.08	23.10	72.69					35.70	1,138.61	25.47	188.47	35.70	1,138.61	25.47	188.47	31.83	222.72	13.93	21.94
1992	12.18	593.49	2.87	74.78	12.18	593.49	2.87	74.78					14.59	1,304.73	6.40	200.54	14.59	1,304.73	6.40	200.54	1.92	226.99	-10.80	19.57
1993	18.55	703.57	10.58	82.69	18.55	703.57	10.58	82.69					19.65	1,561.17	12.95	226.51	19.65	1,561.17	12.95	226.51	14.55	260.01	-0.40	19.49
1994	0.81	709.24	-6.41	77.39	0.81	709.24	-6.41	77.39					3.17	1,610.67	-3.52	218.55	3.17	1,610.67	-3.52	218.55	-24.30	196.82	-33.83	12.90
1995	18.31	839.09	9.12	84.45	18.31	839.09	9.12	84.45					15.27	1,856.57	6.56	232.88	15.27	1,856.57	6.56	232.88	63.42	321.65	46.80	18.94
1996	35.75	1,139.10	26.52	106.84	35.75	1,139.10	26.52	106.84					35.27	2,511.32	26.35	294.24	35.27	2,511.32	26.35	294.24	50.86	485.25	37.21	25.98
1997	18.86	1,353.94	11.85	119.50	18.86	1,353.94	11.85	119.50					20.26	3,020.11	13.33	333.47	20.26	3,020.11	13.33	333.47	3.82	503.80	-3.57	25.05
1998	-18.82	1,099.09	-23.82	91.03	-18.82	1,099.09	-23.82	91.03					-17.50	2,491.53	-22.33	259.00	-17.50	2,491.53	-22.33	259.00	-29.22	356.60	-34.29	16.46
1999	-6.48	1,027.92	-14.06	78.23	-6.48	1,027.92	-14.06	78.23					-4.62	2,376.42	-12.21	227.37	-4.62	2,376.42	-12.21	227.37	-33.22	238.15	-40.12	9.86
2000	25.89	1,294.05	15.91	90.68	25.89	1,294.05	15.91	90.68	28.66	128.66	19.98	119.98	26.37	3,002.97	16.51	264.90	26.37	3,002.97	16.51	264.90	15.96	276.15	3.33	10.19
2001	15.50	1,494.65	7.05	97.07	15.50	1,494.65	7.05	97.07	12.20	144.36	5.13	126.14	13.93	3,421.37	5.85	280.40	13.93	3,421.37	5.85	280.40	77.34	489.74	46.37	14.91
2002	5.22	1,572.61	-2.15	94.98	5.22	1,572.61	-2.15	94.98	1.86	147.05	-4.30	120.71	3.82	3,552.10	-3.12	271.66	3.82	3,552.10	-3.12	271.66	31.08	641.93	14.23	17.03
2003	38.47	2,177.53	29.34	122.85	38.47	2,177.53	29.34	122.85	36.30	200.44	28.34	154.92	37.13	4,871.12	28.48	349.02	37.13	4,871.12	28.48	349.02	57.39	1,010.33	38.19	23.54
2004	30.41	2,839.70	22.87	150.94	30.41	2,839.70	22.87	150.94	35.00	270.58	28.31	198.79	31.58	6,409.30	24.35	434.01	31.58	6,409.30	24.35	434.01	18.43	1,196.57	7.92	25.40
2005	8.29	3,075.06	2.51	154.73	8.29	3,075.06	2.51	154.73	13.67	307.57	8.52	215.71	12.16	7,188.85	6.67	462.98	12.16	7,188.85	6.67	462.98	-23.19	919.11	-30.88	17.56
2006	34.35	4,131.39	28.31	198.53	34.02	4,121.18	27.98	198.02	35.64	417.18	30.28	281.03	35.06	9,709.31	29.51	599.59	35.06	9,709.31	29.51	599.59	19.32	1,096.72	8.44	19.04
2007	-17.83	3,394.71	-21.39	156.07	-17.83	3,386.30	-21.42	155.60	-16.34	349.00	-19.57	226.03	-15.69	8,185.75	-19.05	485.36	-15.69	8,185.75	-19.05	485.36	-42.35	632.27	-47.69	9.96
2008	-37.34	2,127.27	-41.04	92.02	-37.84	2,104.93	-41.56	90.94	-37.31	218.80	-40.78	133.85	-37.73	5,097.46	-41.12	285.79	-37.73	5,097.46	-41.12	285.79	-31.31	434.31	-40.46	5.93
2009	27.45	2,711.15	19.90	110.33	27.80	2,690.12	20.15	109.26	27.62	279.23	20.36	161.10	27.99	6,524.25	21.28	346.60	27.99	6,524.25	21.28	346.60	24.63	541.28	8.26	6.42
2010	27.58	3,458.89	21.81	134.39	27.56	3,431.62	21.76	133.03	26.72	353.83	21.13	195.14	27.95	8,347.58	23.07	426.55	27.96	8,348.46	23.06	426.53	22.60	663.59	7.01	6.87
2011	7.28	3,710.61	2.37	137.57	7.30	3,682.29	2.34	136.14	9.45	387.25	4.69	204.29	8.28	9,039.07	4.32	444.96	8.29	9,040.81	4.32	444.95	-2.42	647.56	-15.14	5.83

FTSE NAREIT US Real Estate Index Series
Annual Price and Total Returns by Property Sector
 1994 - 2011
 (Returns in Percent)

	Industrial/Office		Retail		Residential		Diversified		Health Care		Lodging/Resorts		Self Storage		Timber		Mortgage	
	Total	Price	Total	Price	Total	Price	Total	Price	Total	Price	Total	Price	Total	Price	Total	Price	Total	Price
1994	16.59	10.25	2.98	-3.94	2.31	-3.77	-6.04	-11.54	4.12	-3.54	-8.89	-12.79	8.90	1.31	NA	NA	-24.30	-33.81
1995	25.80	16.94	5.10	-3.20	11.99	3.80	21.16	12.54	24.88	13.93	30.79	22.35	34.40	25.42	NA	NA	63.42	46.82
1996	44.43	35.90	34.61	24.43	29.46	19.72	33.96	22.25	20.40	11.87	49.19	40.32	42.85	34.51	NA	NA	50.86	37.17
1997	27.49	20.90	16.95	9.83	16.31	9.04	21.67	13.15	15.76	7.56	30.09	23.30	3.41	-1.25	NA	NA	3.82	-3.58
1998	-14.44	-19.16	-4.74	-10.87	-8.11	-13.69	-22.11	-26.02	-17.45	-23.65	-52.83	-55.01	-7.20	-10.85	NA	NA	-29.22	-34.29
1999	3.35	-4.07	-11.77	-18.89	9.48	1.81	-14.41	-23.71	-24.83	-31.98	-16.14	-24.05	-8.03	-14.20	NA	NA	-33.22	-40.10
2000	33.38	23.26	17.97	7.72	34.30	25.25	24.10	15.21	25.84	9.97	45.77	30.83	14.69	6.50	NA	NA	15.96	3.35
2001	7.09	-0.41	30.41	20.61	9.04	2.02	12.52	4.80	51.86	39.11	-8.63	-16.32	43.24	36.55	NA	NA	77.35	46.32
2002	0.87	-5.95	21.07	13.11	-5.99	-12.63	4.24	-3.38	4.82	-3.08	-1.49	-7.04	0.56	-5.01	NA	NA	31.08	14.22
2003	33.26	24.62	46.77	38.46	25.90	17.65	40.25	27.87	53.59	41.65	31.69	26.57	38.14	30.75	NA	NA	57.39	38.23
2004	25.24	18.42	40.23	33.23	32.71	24.08	32.41	22.20	20.96	13.35	32.70	29.08	29.70	24.33	NA	NA	18.43	7.90
2005	12.85	6.71	11.80	6.60	13.69	8.31	9.87	4.04	1.79	-4.61	9.76	5.93	26.55	21.98	NA	NA	-23.19	-30.87
2006	39.39	34.06	29.02	24.00	38.93	33.80	38.03	32.10	44.55	35.81	28.16	22.75	40.94	36.66	NA	NA	19.32	8.43
2007	-14.86	-18.17	-15.77	-18.97	-25.21	-28.08	-22.29	-25.40	2.13	-3.47	-22.37	-25.98	-24.82	-27.16	NA	NA	-42.35	-47.69
2008	-50.28	-53.02	-48.36	-51.28	-24.89	-29.08	-28.25	-31.84	-11.98	-17.06	-59.67	-62.72	5.05	1.44	NA	NA	-31.31	-40.46
2009	29.17	21.40	27.17	21.57	30.82	22.81	17.02	12.77	24.62	15.76	67.19	64.53	8.37	4.44	NA	NA	24.63	8.26
2010	17.04	12.52	33.41	28.43	46.01	40.87	23.75	19.03	19.20	12.71	42.77	40.51	29.29	25.20	NA	NA	22.60	7.01
2011	-1.47	-5.16	12.20	8.27	15.37	11.82	2.82	-1.32	13.63	7.62	-14.31	-16.38	35.22	31.04	7.65	3.77	-2.42	-15.14

FTSE NAREIT US Real Estate Index Series
Annual Price and Total Returns by Property Subsector
1994 - 2011
(Returns in Percent)

	Industrial/Office						Retail						Residential				Mortgage			
	Industrial		Office		Mixed		Shopping Centers		Regional Malls		Free Standing		Apartments		Manufactured Homes		Home Financing		Commercial Financing	
	Total	Price	Total	Price	Total	Price	Total	Price	Total	Price	Total	Price	Total	Price	Total	Price	Total	Price	Total	Price
1994	18.66	13.37	2.86	-2.68	NA	NA	1.33	-5.49	8.77	1.41	-5.46	-17.52	2.19	-3.91	3.31	-2.59	NA	NA	NA	NA
1995	16.21	8.55	38.79	28.34	NA	NA	7.40	-0.74	3.00	-5.74	31.56	20.28	12.26	3.94	10.68	2.87	NA	NA	NA	NA
1996	37.22	28.99	51.82	42.85	40.79	32.74	33.49	23.37	45.27	34.10	30.95	20.38	28.93	19.07	34.93	26.58	NA	NA	NA	NA
1997	19.02	12.76	29.01	22.56	27.91	21.01	21.44	14.36	13.69	6.58	17.70	10.22	16.04	8.77	16.17	9.33	NA	NA	NA	NA
1998	-11.74	-16.32	-17.35	-22.14	-8.85	-13.52	-6.99	-13.00	-2.62	-8.17	-6.25	-11.97	-8.77	-14.37	-0.86	-6.10	NA	NA	NA	NA
1999	3.90	-4.03	4.26	-3.11	-0.72	-7.62	-10.71	-18.03	-14.58	-21.22	-4.89	-12.31	10.72	2.87	-2.80	-8.77	NA	NA	NA	NA
2000	28.62	14.48	35.45	26.62	31.97	22.63	15.10	4.27	23.50	13.63	8.94	-0.34	35.53	26.40	20.94	12.62	9.16	-1.60	25.60	10.13
2001	7.42	0.53	6.65	-0.79	8.15	-0.36	29.89	19.83	31.87	22.87	23.95	12.06	8.66	1.68	13.72	6.37	102.02	68.36	37.37	10.17
2002	17.32	10.23	-6.29	-12.74	8.56	0.87	17.72	9.63	24.56	16.76	21.76	13.65	-6.15	-12.88	-4.05	-9.61	28.25	11.40	38.50	21.27
2003	33.13	25.76	34.01	24.84	31.30	22.76	43.12	34.99	52.24	43.75	35.92	27.70	25.49	17.22	29.99	21.51	42.73	22.74	84.67	68.53
2004	34.10	27.78	23.28	16.22	19.59	12.99	36.25	29.63	45.01	37.70	32.87	26.03	34.72	26.50	6.40	-8.40	24.91	12.89	7.45	-0.10
2005	15.41	10.76	13.11	6.76	7.40	-0.12	9.27	3.59	16.54	11.76	-0.49	-5.44	14.65	9.12	-2.58	-6.04	-25.95	-33.94	-16.06	-22.82
2006	28.92	24.46	45.22	39.76	28.28	22.08	34.87	29.74	23.83	19.19	30.74	23.65	39.95	34.77	15.35	11.57	14.75	3.87	30.31	19.61
2007	0.38	-3.17	-18.96	-22.01	-33.09	-36.66	-17.68	-20.98	-15.85	-18.80	-0.43	-5.26	-25.43	-28.30	-19.34	-22.24	-38.23	-43.41	-48.79	-54.29
2008	-67.47	-69.38	-41.07	-44.02	-33.99	-39.27	-38.84	-42.23	-60.60	-62.79	-15.09	-20.32	-25.13	-29.33	-20.18	-24.06	-20.02	-30.25	-74.84	-78.24
2009	12.17	4.84	35.55	28.04	34.90	25.34	-1.66	-7.44	62.99	59.53	25.93	16.15	30.40	22.37	40.92	33.33	28.19	11.18	-40.99	-46.15
2010	18.89	13.60	18.41	14.50	8.75	2.82	30.78	25.83	34.64	30.15	37.37	29.32	47.04	41.89	27.02	22.11	21.02	5.04	41.99	33.88
2011	-5.16	-8.74	-0.76	-4.21	2.67	-2.76	-0.73	-4.48	22.00	18.23	0.43	-4.94	15.10	11.63	20.38	15.48	-0.87	-14.41	-11.34	-18.54

Equity Market Capitalization
(Millions of dollars at year end)

Year	<u>All REITs</u>		<u>Equity</u>			<u>Mortgage</u>			<u>Hybrid¹</u>		
	Number of REITs	Market Capitalization	Number of REITs	Market Capitalization	Percent of All REITs	Number of REITs	Market Capitalization	Percent of All REITs	Number of REITs	Market Capitalization	Percent of All REITs
1971	34	1,494.3	12	332.0	22.2	12	570.8	38.2	10	591.6	39.6
1972	46	1,880.9	17	377.3	20.1	18	774.7	41.2	11	728.9	38.8
1973	53	1,393.5	20	336.0	24.1	22	517.3	37.1	11	540.2	38.8
1974	53	712.4	19	241.9	34.0	22	238.8	33.5	12	231.7	32.5
1975	46	899.7	12	275.7	30.6	22	312.0	34.7	12	312.0	34.7
1976	62	1,308.0	27	409.6	31.3	22	415.6	31.8	13	482.8	36.9
1977	69	1,528.1	32	538.1	35.2	19	398.3	26.1	18	591.6	38.7
1978	71	1,412.4	33	575.7	40.8	19	340.3	24.1	19	496.4	35.1
1979	71	1,754.0	32	743.6	42.4	19	377.1	21.5	20	633.3	36.1
1980	75	2,298.6	35	942.2	41.0	21	509.5	22.2	19	846.8	36.8
1981	76	2,438.9	36	977.5	40.1	21	541.3	22.2	19	920.1	37.7
1982	66	3,298.6	30	1,071.4	32.5	20	1,133.4	34.4	16	1,093.8	33.2
1983	59	4,257.2	26	1,468.6	34.5	19	1,460.0	34.3	14	1,328.7	31.2
1984	59	5,085.3	25	1,794.5	35.3	20	1,801.3	35.4	14	1,489.4	29.3
1985	82	7,674.0	37	3,270.3	42.6	32	3,162.4	41.2	13	1,241.2	16.2
1986	96	9,923.6	45	4,336.1	43.7	35	3,625.8	36.5	16	1,961.7	19.8
1987	110	9,702.4	53	4,758.5	49.0	38	3,161.4	32.6	19	1,782.4	18.4
1988	117	11,435.2	56	6,141.7	53.7	40	3,620.8	31.7	21	1,672.6	14.6
1989	120	11,662.2	56	6,769.6	58.0	43	3,536.3	30.3	21	1,356.3	11.6
1990	119	8,737.1	58	5,551.6	63.5	43	2,549.2	29.2	18	636.3	7.3
1991	138	12,968.2	86	8,785.5	67.7	28	2,586.3	19.9	24	1,596.4	12.3
1992	142	15,912.0	89	11,171.1	70.2	30	2,772.8	17.4	23	1,968.1	12.4
1993	189	32,158.7	135	26,081.9	81.1	32	3,398.5	10.6	22	2,678.2	8.3
1994	226	44,306.0	175	38,812.0	87.6	29	2,502.7	5.6	22	2,991.3	6.8
1995	219	57,541.3	178	49,913.0	86.7	24	3,395.4	5.9	17	4,232.9	7.4
1996	199	88,776.3	166	78,302.0	88.2	20	4,778.6	5.4	13	5,695.8	6.4
1997	211	140,533.8	176	127,825.3	91.0	26	7,370.3	5.2	9	5,338.2	3.8
1998	210	138,301.4	173	126,904.5	91.8	28	4,916.2	3.6	9	6,480.7	4.7
1999	203	124,261.9	167	118,232.7	95.1	26	4,441.7	3.6	10	1,587.5	1.3
2000	189	138,715.4	158	134,431.0	96.9	22	2,652.4	1.9	9	1,632.0	1.2
2001	182	154,898.6	151	147,092.1	95.0	22	3,990.5	2.6	9	3,816.0	2.5
2002	176	161,937.3	149	151,271.5	93.4	20	7,146.4	4.4	7	3,519.4	2.2
2003	171	224,211.9	144	204,800.4	91.3	20	14,186.5	6.3	7	5,225.0	2.3
2004	190	305,025.1	150	273,629.0	89.7	33	24,774.1	8.1	7	6,622.0	2.2
2005	197	330,691.3	152	301,491.0	91.2	37	23,393.7	7.1	8	5,806.6	1.8
2006	183	438,071.1	138	400,741.4	91.5	38	29,195.3	6.7	7	8,134.3	1.9
2007	152	312,009.0	118	288,694.6	92.5	29	19,054.1	6.1	5	4,260.3	1.4
2008	136	191,651.0	113	176,237.7	92.0	20	14,280.5	7.5	3	1,132.9	0.6
2009	142	271,199.1	115	248,355.1	91.6	23	22,103.2	8.2	4	740.8	0.3
2010	153	389,295.4	126	358,908.2	92.2	27	30,387.2	7.8	--	--	--
2011	160	450,500.6	130	407,528.9	90.5	30	42,971.7	9.5	--	--	--

Note:

Market capitalization equals share price multiplied by the number of shares outstanding and does not include Operating Partnership Units.

¹The FTSE NAREIT Hybrid REIT Index was discontinued on December 17, 2010.

Source: NAREIT®

REITs in the FTSE NAREIT All REITs Index and S&P Equity Indexes									
(Ranked by equity market capitalization)									
August 31, 2012									
					Equity Market Capitalization (\$M) ¹				
Number of REITs	Company	Ticker Symbol	Investment Sector	Property Subsector	S&P REITs	FTSE NAREIT All REITs	Percent of Sector	Percent of S&P REITs	Percent of FTSE NAREIT All REITs
(1)	(2)	(3)	(4)	(5)	(6)	(7)	(8)	(9)	(10)
Summary by Investment Sector, Property Sector and Property Subsector									
31	Industrial/Office				69,456.6	86,237.7		16.18	14.85
19	Office				42,421.8	54,344.5		9.88	9.36
7	Industrial				17,199.0	21,208.7		4.01	3.65
5	Mixed				9,835.7	10,684.5		2.29	1.84
33	Retail				103,267.3	139,277.8		24.05	23.99
20	Shopping Centers				32,191.4	41,427.3		7.50	7.13
8	Regional Malls				61,542.1	86,162.9		14.33	14.84
5	Free Standing				9,533.8	11,687.6		2.22	2.01
19	Residential				71,247.9	77,998.0		16.59	13.43
16	Apartments				71,247.9	73,766.1		16.59	12.70
3	Manufactured Homes				0.0	4,231.9		0.00	0.73
15	Diversified				19,350.1	36,209.3		4.51	6.24
16	Lodging/Resorts				18,114.1	27,152.4		4.22	4.68
4	Self Storage				29,933.9	31,515.0		6.97	5.43
11	Health Care				62,642.8	64,093.1		14.59	11.04
4	Timber				27,460.4	27,460.4		6.40	4.73
1	Infrastructure				27,922.8	27,935.1		6.50	4.81
32	Mortgage REITs				0.0	62,743.6		0.00	10.81
18	Home Financing				0.0	54,257.1		0.00	9.34
14	Commercial Financing				0.0	8,486.5		0.00	1.46
167	Industry Totals				429,395.9	580,622.2		100.00	100.00
Distribution of REITs by S&P Index									
16	S&P 500 Large Cap					273,589		63.71	47.12
27	S&P 400 Mid Cap					113,017		26.32	19.46
29	S&P 600 Small Cap					42,790		9.97	7.37
72	Total S&P REITs					429,395.9		100.00	73.95

REITs in the FTSE NAREIT All REITs Index and S&P Equity Indexes

(Ranked by equity market capitalization)

August 31, 2012

Summary of REITs in S&P Equity Indexes

	<u>Equity Market Capitalization¹</u>
S&P 500 Constituents	
1 Simon Property Group Inc.	48,101.5
2 American Tower Corp	27,922.8
3 Public Storage	24,770.6
4 Ventas Inc.	19,269.1
5 HCP Inc.	19,238.4
6 Equity Residential	18,157.7
7 Boston Properties Inc.	16,798.8
8 Prologis Inc.	15,684.1
9 Vornado Realty Trust	14,954.7
10 AvalonBay Communities Inc.	13,456.0
11 Weyerhaeuser Co.	13,350.3
12 Health Care REIT Inc.	12,446.3
13 Host Hotels & Resorts Inc.	11,003.0
14 Kimco Realty Corp.	8,246.5
15 Plum Creek Timber Company Inc.	6,663.7
16 Apartment Investment & Management Co.	3,525.7
16 Subtotal	273,589.1
S&P 400 Mid Cap Constituents	
1 Macerich Co.	7,858.3
2 SL Green Realty Corp.	7,224.5
3 Federal Realty Investment Trust	6,852.3
4 UDR Inc.	6,693.6
5 Rayonier Inc. REIT	5,998.9
6 Realty Income Corp.	5,611.8
7 Camden Property Trust	5,574.4
8 Essex Property Trust Inc.	5,351.9
9 Taubman Centers Inc.	4,702.7
10 Alexandria Real Estate Equities Inc.	4,564.3
11 Regency Centers Corp.	4,405.1
12 Liberty Property Trust	4,327.4
13 American Campus Communities Inc.	4,183.3
14 Duke Realty Corp.	3,863.5
15 BRE Properties Inc.	3,828.7
16 Senior Housing Properties Trust	3,597.7
17 Weingarten Realty Investors	3,374.9
18 National Retail Properties Inc.	3,323.9
19 Home Properties Inc.	3,081.8
20 Hospitality Properties Trust	2,969.8
21 BioMed Realty Trust Inc.	2,850.4
22 Omega Healthcare Investors Inc.	2,541.4
23 Equity One Inc.	2,430.5
24 Highwoods Properties Inc.	2,410.7
25 Mack-Cali Realty Corp.	2,344.3
26 Corporate Office Properties Trust	1,603.3
27 Potlatch Corp.	1,447.5
27 Subtotal	113,017.0
S&P 600 Small Cap Constituents	
1 Extra Space Storage Inc.	3,516.5
2 Kilroy Realty Corp.	3,224.8
3 Tanger Factory Outlet Centers Inc.	3,107.6
4 Mid-America Apartment Communities Inc.	2,765.4
5 Post Properties Inc.	2,717.8
6 LaSalle Hotel Properties	2,333.5
7 Entertainment Properties Trust	2,119.8
8 Colonial Properties Trust	1,911.6
9 Healthcare Realty Trust Inc.	1,888.1
10 DiamondRock Hospitality Co.	1,807.9
11 Sovran Self Storage Inc.	1,646.8
12 PS Business Parks Inc.	1,644.8
13 EastGroup Properties Inc.	1,515.0
14 Lexington Realty Trust	1,447.6
15 Medical Properties Trust Inc.	1,385.3
16 Acadia Realty Trust	1,092.7
17 LTC Properties Inc.	1,023.5
18 Franklin Street Properties Corp.	922.3
19 Pennsylvania Real Estate Investment Trust	879.6
20 Saul Centers Inc.	840.6
21 Cousins Properties Inc.	828.0
22 Inland Real Estate Corp.	727.6
23 Sabra Healthcare REIT Inc.	706.8
24 Getty Realty Corp.	598.1
25 Universal Health Realty Income Trust	546.3
26 Parkway Properties Inc.	478.5
27 Urstadt Biddle Properties Inc. Cl A	405.9
28 Cedar Realty Trust Inc	380.5
29 Kite Realty Group Trust	327.0
29 Subtotal	42,789.8
72 Total	429,395.9

REITs in the FTSE NAREIT All REITs Index and S&P Equity Indexes

(Ranked by equity market capitalization)

August 31, 2012

Property Sector: Industrial/Office									
1	Boston Properties Inc.	BXP	Equity	Office	S&P 500	16,798.8	30.91	3.91	2.89
2	SL Green Realty Corp.	SLG	Equity	Office	S&P 400	7,224.5	13.29	1.68	1.24
3	Alexandria Real Estate Equities Inc.	ARE	Equity	Office	S&P 400	4,564.3	8.40	1.06	0.79
4	Douglas Emmett Inc.	DEI	Equity	Office		3,349.0	6.16		0.58
5	Kilroy Realty Corp.	KRC	Equity	Office	S&P 600	3,224.8	5.93	0.75	0.56
6	Piedmont Office Realty Trust Inc.	PDM	Equity	Office		2,930.0	5.39		0.50
7	BioMed Realty Trust Inc.	BMR	Equity	Office	S&P 400	2,850.4	5.25	0.66	0.49
8	Highwoods Properties Inc.	HIW	Equity	Office	S&P 400	2,410.7	4.44	0.56	0.42
9	Mack-Cali Realty Corp.	CLI	Equity	Office	S&P 400	2,344.3	4.31	0.55	0.40
10	Brandywine Realty Trust	BDN	Equity	Office		1,741.3	3.20		0.30
11	Corporate Office Properties Trust	OFC	Equity	Office	S&P 400	1,603.3	2.95	0.37	0.28
12	CommonWealth REIT	CWH	Equity	Office		1,252.2	2.30		0.22
13	Government Properties Income Trust	GOV	Equity	Office		1,062.0	1.95		0.18
14	Franklin Street Properties Corp.	FSP	Equity	Office	S&P 600	922.3	1.70	0.21	0.16
15	Hudson Pacific Properties Inc.	HPP	Equity	Office		807.2	1.49		0.14
16	Parkway Properties Inc.	PKY	Equity	Office	S&P 600	478.5	0.88	0.11	0.08
17	Healthcare Trust of America Inc	HTA	Equity	Office		399.7	0.74		0.07
18	Mission West Properties	MSW	Equity	Office		203.0	0.37		0.03
19	MPG Office Trust Inc.	MPG	Equity	Office		178.3	0.33		0.03
19 Subsector Totals						54,344.5	100.00	9.88	9.36
10 S&P Subsector Total						42,421.8			
Property Sector: Industrial									
1	Prologis Inc.	PLD	Equity	Industrial	S&P 500	15,684.1	73.95	3.65	2.70
2	DCT Industrial Trust Inc.	DCT	Equity	Industrial		1,567.5	7.39		0.27
3	EastGroup Properties Inc.	EGP	Equity	Industrial	S&P 600	1,515.0	7.14	0.35	0.26
4	First Industrial Realty Trust Inc.	FR	Equity	Industrial		1,268.2	5.98		0.22
5	STAG Industrial Inc.	STAG	Equity	Industrial		527.5	2.49		0.09
6	Monmouth Real Estate Investment Corp. (CI A)	MNR	Equity	Industrial		446.0	2.10		0.08
7	Terreno Realty Corp.	TRNO	Equity	Industrial		200.4	0.95		0.03
7 Subsector Totals						21,208.7	100.00	4.01	3.65
2 S&P Subsector Total						17,199.0			
Property Sector: Mixed									
1	Liberty Property Trust	LRY	Equity	Mixed	S&P 400	4,327.4	40.50	1.01	0.75
2	Duke Realty Corp.	DRE	Equity	Mixed	S&P 400	3,863.5	36.16	0.90	0.67
3	PS Business Parks Inc.	PSB	Equity	Mixed	S&P 600	1,644.8	15.39	0.38	0.28
4	First Potomac Realty Trust	FPO	Equity	Mixed		652.9	6.11		0.11
5	Gladstone Commercial Corp.	GOOD	Equity	Mixed		195.9	1.83		0.03
5 Subsector Totals						10,684.5	100.00	2.29	1.84
3 S&P Subsector Total						9,835.7			
31 Sector Totals						86,237.7		16.18	14.85
15 S&P Sector Total						69,456.6			
Property Sector: Retail									
1	Kimco Realty Corp.	KIM	Equity	Shopping Centers	S&P 500	8,246.5	19.91	1.92	1.42
2	Federal Realty Investment Trust	FRT	Equity	Shopping Centers	S&P 400	6,852.3	16.54	1.60	1.18
3	Regency Centers Corp.	REG	Equity	Shopping Centers	S&P 400	4,405.1	10.63	1.03	0.76
4	DDR Corp	DDR	Equity	Shopping Centers		4,296.0	10.37		0.74
5	Weingarten Realty Investors	WRI	Equity	Shopping Centers	S&P 400	3,374.9	8.15	0.79	0.58
6	Tanger Factory Outlet Centers Inc.	SKT	Equity	Shopping Centers	S&P 600	3,107.6	7.50	0.72	0.54
7	Equity One Inc.	EQY	Equity	Shopping Centers	S&P 400	2,430.5	5.87	0.57	0.42
8	Alexander's Inc.	ALX	Equity	Shopping Centers		2,284.4	5.51		0.39
9	Acadia Realty Trust	AKR	Equity	Shopping Centers	S&P 600	1,092.7	2.64	0.25	0.19
10	Retail Properties of America Inc.	RPAI	Equity	Shopping Centers		954.7	2.30		0.16
11	Saul Centers Inc.	BFS	Equity	Shopping Centers	S&P 600	840.6	2.03	0.20	0.14
12	Inland Real Estate Corp.	IRC	Equity	Shopping Centers	S&P 600	727.6	1.76	0.17	0.13
13	Retail Opportunity Investment Corp.	ROIC	Equity	Shopping Centers		632.8	1.53		0.11
14	Ramco-Gershenson Properties Trust	RPT	Equity	Shopping Centers		606.2	1.46		0.10
15	Urstadt Biddle Properties Inc. CI A	UBA	Equity	Shopping Centers	S&P 600	405.9	0.98	0.09	0.07
16	Excel Trust Inc.	EXL	Equity	Shopping Centers		393.5	0.95		0.07
17	Cedar Realty Trust Inc	CDR	Equity	Shopping Centers	S&P 600	380.5	0.92	0.09	0.07
18	Kite Realty Group Trust	KRG	Equity	Shopping Centers	S&P 600	327.0	0.79	0.08	0.06
19	AmREIT, Inc.	AMRE	Equity	Shopping Centers		53.8	0.13		0.01
20	Roberts Realty Investors Inc.	RPI	Equity	Shopping Centers		14.3	0.03		0.00
20 Subsector Totals						41,427.3	100.00	7.50	7.13
12 S&P Subsector Total						32,191.4			
Property Sector: Regional Malls									
1	Simon Property Group Inc.	SPG	Equity	Regional Malls	S&P 500	48,101.5	55.83	11.20	8.28
2	General Growth Properties Inc.	GGP	Equity	Regional Malls		19,309.9	22.41		3.33
3	Macerich Co.	MAC	Equity	Regional Malls	S&P 400	7,858.3	9.12	1.83	1.35
4	Taubman Centers Inc.	TCO	Equity	Regional Malls	S&P 400	4,702.7	5.46	1.10	0.81
5	CBL & Associates Properties Inc.	CBL	Equity	Regional Malls		3,170.5	3.68		0.55
6	Glimcher Realty Trust	GRT	Equity	Regional Malls		1,461.0	1.70		0.25
7	Pennsylvania Real Estate Investment Trust	PEI	Equity	Regional Malls	S&P 600	879.6	1.02	0.20	0.15
8	Rouse Properties Inc.	RSE	Equity	Regional Malls		679.4	0.79		0.12
8 Subsector Totals						86,162.9	100.00	14.33	14.84
4 S&P Subsector Total						61,542.1			
Property Sector: Free Standing									
1	Realty Income Corp.	O	Equity	Free Standing	S&P 400	5,611.8	48.01	1.31	0.97
2	National Retail Properties Inc.	NNN	Equity	Free Standing	S&P 400	3,323.9	28.44	0.77	0.57
3	American Realty Capital Trust Inc	ARCT	Equity	Free Standing		1,870.0	16.00		0.32
4	Getty Realty Corp.	GTY	Equity	Free Standing	S&P 600	598.1	5.12	0.14	0.10
5	Agree Realty Corp.	ADC	Equity	Free Standing		283.8	2.43		0.05
5 Subsector Totals						11,687.6	100.00	2.22	2.01
3 S&P Subsector Total						9,533.8			
33 Sector Totals						139,277.8		24.05	23.99
19 S&P Sector Total						103,267.3			

REITs in the FTSE NAREIT All REITs Index and S&P Equity Indexes

(Ranked by equity market capitalization)

August 31, 2012

Property Sector: Residential									
1	Equity Residential	EQR	Equity	Apartments	S&P 500	18,157.7	24.62	4.23	3.13
2	AvalonBay Communities Inc.	AVB	Equity	Apartments	S&P 500	13,456.0	18.24	3.13	2.32
3	UDR Inc.	UDR	Equity	Apartments	S&P 400	6,693.6	9.07	1.56	1.15
4	Camden Property Trust	CPT	Equity	Apartments	S&P 400	5,574.4	7.56	1.30	0.96
5	Essex Property Trust Inc.	ESS	Equity	Apartments	S&P 400	5,351.9	7.26	1.25	0.92
6	American Campus Communities Inc.	ACC	Equity	Apartments	S&P 400	4,183.3	5.67	0.97	0.72
7	BRE Properties Inc.	BRE	Equity	Apartments	S&P 400	3,828.7	5.19	0.89	0.66
8	Apartment Investment & Management Co.	AIV	Equity	Apartments	S&P 500	3,525.7	4.78	0.82	0.61
9	Home Properties Inc.	HME	Equity	Apartments	S&P 400	3,081.8	4.18	0.72	0.53
10	Mid-America Apartment Communities Inc.	MAA	Equity	Apartments	S&P 600	2,765.4	3.75	0.64	0.48
11	Post Properties Inc.	PPS	Equity	Apartments	S&P 600	2,717.8	3.68	0.63	0.47
12	Colonial Properties Trust	CLP	Equity	Apartments	S&P 600	1,911.6	2.59	0.45	0.33
13	Education Realty Trust Inc.	EDR	Equity	Apartments		1,306.5	1.77		0.23
14	Associated Estates Realty Corp.	AEC	Equity	Apartments		752.8	1.02		0.13
15	Campus Crest Communities Inc.	CCG	Equity	Apartments		416.4	0.56		0.07
16	Preferred Apartment Communities Inc.	APTS	Equity	Apartments		42.4	0.06		0.01
16 Subsector Totals						73,766.1	100.00	16.59	12.70
12 S&P Subsector Total						71,247.9			
Property Sector: Manufactured Homes									
1	Equity Lifestyle Properties Inc.	ELS	Equity	Manufactured Homes		2,840.5	67.12		0.49
2	Sun Communities Inc.	SUI	Equity	Manufactured Homes		1,211.8	28.63		0.21
3	UMH Properties Inc.	UMH	Equity	Manufactured Homes		179.7	4.25		0.03
3 Subsector Totals						4,231.9	100.00	0.00	0.73
0 S&P Subsector Total						0.0			
19 Sector Totals						77,998.0		16.59	13.43
12 S&P Sector Total						71,247.9			
Property Sector: Diversified									
1	Vornado Realty Trust	VNO	Equity		S&P 500	14,954.7	41.30	3.48	2.58
2	Digital Realty Trust Inc.	DLR	Equity			9,073.0	25.06		1.56
3	Entertainment Properties Trust	EPR	Equity		S&P 600	2,119.8	5.85	0.49	0.37
4	Washington Real Estate Investment Trust	WRE	Equity			1,770.0	4.89		0.30
5	Dupont Fabros Technology Inc.	DFT	Equity			1,742.7	4.81		0.30
6	Lexington Realty Trust	LXP	Equity		S&P 600	1,447.6	4.00	0.34	0.25
7	American Assets Trust Inc.	AAT	Equity			1,070.9	2.96		0.18
8	Cousins Properties Inc.	CUZ	Equity		S&P 600	828.0	2.29	0.19	0.14
9	Select Income REIT	SIR	Equity			774.1	2.14		0.13
10	Investors Real Estate Trust	IRET	Equity			719.5	1.99		0.12
11	CoreSite Realty Corp.	COR	Equity			570.7	1.58		0.10
12	Winthrop Realty Trust	FUR	Equity			373.0	1.03		0.06
13	CapLease Inc.	LSE	Equity			324.9	0.90		0.06
14	One Liberty Properties Inc.	OLP	Equity			282.6	0.78		0.05
15	Whitestone REIT	WSR	Equity			157.8	0.44		0.03
15 Sector Totals						36,209.3	100.00	4.51	6.24
4 S&P Sector Total						19,350.1			
Property Sector: Lodging/Resorts									
1	Host Hotels & Resorts Inc.	HST	Equity		S&P 500	11,003.0	40.52	2.56	1.90
2	Hospitality Properties Trust	HPT	Equity		S&P 400	2,969.8	10.94	0.69	0.51
3	LaSalle Hotel Properties	LHO	Equity		S&P 600	2,333.5	8.59	0.54	0.40
4	RLJ Lodging Trust	RLJ	Equity			1,896.8	6.99		0.33
5	DiamondRock Hospitality Co.	DRH	Equity		S&P 600	1,807.9	6.66	0.42	0.31
6	Sunstone Hotel Investors Inc.	SHO	Equity			1,414.8	5.21		0.24
7	Strategic Hotels & Resorts Inc.	BEE	Equity			1,246.0	4.59		0.21
8	Pebblebrook Hotel Trust	PEB	Equity			1,240.2	4.57		0.21
9	Hersha Hospitality Trust (CI A)	HT	Equity			987.7	3.64		0.17
10	Chesapeake Lodging Trust	CHSP	Equity			599.1	2.21		0.10
11	FelCor Lodging Trust Inc.	FCH	Equity			577.6	2.13		0.10
12	Ashford Hospitality Trust	AHT	Equity			562.7	2.07		0.10
13	Summit Hotel Properties Inc.	INN	Equity			260.2	0.96		0.04
14	Chatham Lodging Trust	CLDT	Equity			193.6	0.71		0.03
15	MHI Hospitality Corp.	MDH	Equity			38.0	0.14		0.01
16	Supertel Hospitality Inc.	SPPR	Equity			21.5	0.08		0.00
16 Sector Totals						27,152.4	100.00	4.22	4.68
4 S&P Sector Total						18,114.1			
Property Sector: Self Storage									
1	Public Storage	PSA	Equity		S&P 500	24,770.6	78.60	5.77	4.27
2	Extra Space Storage Inc.	EXR	Equity		S&P 600	3,516.5	11.16	0.82	0.61
3	Sovran Self Storage Inc.	SSS	Equity		S&P 600	1,646.8	5.23	0.38	0.28
4	CubeSmart	CUBE	Equity			1,581.1	5.02		0.27
4 Sector Totals						31,515.0	100.00	6.97	5.43
3 S&P Sector Total						29,933.9			

REITs in the FTSE NAREIT All REITs Index and S&P Equity Indexes

(Ranked by equity market capitalization)

August 31, 2012

Property Sector: Health Care								
1	Ventas Inc.	VTR	Equity	S&P 500	19,269.1	30.06	4.49	3.32
2	HCP Inc.	HCP	Equity	S&P 500	19,238.4	30.02	4.48	3.31
3	Health Care REIT Inc.	HCN	Equity	S&P 500	12,446.3	19.42	2.90	2.14
4	Senior Housing Properties Trust	SNH	Equity	S&P 400	3,597.7	5.61	0.84	0.62
5	Omega Healthcare Investors Inc.	OHI	Equity	S&P 400	2,541.4	3.97	0.59	0.44
6	Healthcare Realty Trust Inc.	HR	Equity	S&P 600	1,888.1	2.95	0.44	0.33
7	National Health Investors Inc.	NHI	Equity		1,450.3	2.26		0.25
8	Medical Properties Trust Inc.	MPW	Equity	S&P 600	1,385.3	2.16	0.32	0.24
9	LTC Properties Inc.	LTC	Equity	S&P 600	1,023.5	1.60	0.24	0.18
10	Sabra Healthcare REIT Inc.	SBRA	Equity	S&P 600	706.8	1.10	0.16	0.12
11	Universal Health Realty Income Trust	UHT	Equity	S&P 600	546.3	0.85	0.13	0.09
11	Sector Totals				64,093.1	100.00	14.59	11.04
10	S&P Sector Total				62,642.8			
Property Sector: Timber								
1	Weyerhaeuser Co.	WY	Equity	S&P 500	13,350.3	48.62	3.11	2.30
2	Plum Creek Timber Company Inc.	PCL	Equity	S&P 500	6,663.7	24.27	1.55	1.15
3	Rayonier Inc. REIT	RYN	Equity	S&P 400	5,998.9	21.85	1.40	1.03
4	Potlatch Corp.	PCH	Equity	S&P 400	1,447.5	5.27	0.34	0.25
4	Sector Totals				27,460.4	100.00	6.40	4.73
4	S&P Sector Total				27,460.4			
Property Sector: Infrastructure								
1	American Tower Corp	AMT	Equity	S&P 500	27,922.8	99.96	6.50	4.81
2	Power REIT	PW	Equity		12.3	0.04		0.00
2	Sector Totals				27,935.1	100.00	6.50	4.81
1	S&P Sector Total				27,922.8			
Investment Sector: Mortgage								
1	Annaly Capital Management Inc.	NLY	Mortgage	Home Financing	16,774.6	30.92		2.89
2	American Capital Agency Corp.	AGNC	Mortgage	Home Financing	11,734.1	21.63		2.02
3	Two Harbors Investment Corp.	TWO	Mortgage	Home Financing	3,150.7	5.81		0.54
4	MFA Financial Inc.	MFA	Mortgage	Home Financing	2,916.1	5.37		0.50
5	Hatteras Financial Corp.	HTS	Mortgage	Home Financing	2,834.6	5.22		0.49
6	Chimera Investment Corp.	CIM	Mortgage	Home Financing	2,608.7	4.81		0.45
7	Invesco Mortgage Capital Inc.	IVR	Mortgage	Home Financing	2,364.3	4.36		0.41
8	CYS Investments Inc	CYS	Mortgage	Home Financing	2,309.5	4.26		0.40
9	Armour Residential REIT Inc.	ARR	Mortgage	Home Financing	2,219.2	4.09		0.38
10	Capstead Mortgage Corp.	CMO	Mortgage	Home Financing	1,341.8	2.47		0.23
11	PennyMac Mortgage Investment Trust	PMT	Mortgage	Home Financing	1,220.4	2.25		0.21
12	Redwood Trust Inc.	RWT	Mortgage	Home Financing	1,125.6	2.07		0.19
13	Anworth Mortgage Asset Corp.	ANH	Mortgage	Home Financing	941.1	1.73		0.16
14	American Capital Mortgage Investment Corp.	MTGE	Mortgage	Home Financing	896.8	1.65		0.15
15	Dynex Capital Inc.	DX	Mortgage	Home Financing	567.9	1.05		0.10
16	AG Mortgage Investment Trust Inc.	MITT	Mortgage	Home Financing	535.9	0.99		0.09
17	Apollo Residential Mortgage Inc.	AMTG	Mortgage	Home Financing	494.3	0.91		0.09
18	Western Asset Mortgage Capital Corp	WMC	Mortgage	Home Financing	221.6	0.41		0.04
18	Subsector Totals				54,257.1	100.00	0.00	9.34
0	S&P Subsector Total				0.0			
1	Starwood Property Trust Inc.	STWD	Mortgage	Commercial Financing	2,740.7	32.30		0.47
2	Newcastle Investment Corp.	NCT	Mortgage	Commercial Financing	1,285.8	15.15		0.22
3	Crexus Investment Corp.	CXS	Mortgage	Commercial Financing	787.7	9.28		0.14
4	Northstar Realty Finance Corp.	NRF	Mortgage	Commercial Financing	782.8	9.22		0.13
5	Colony Financial Inc.	CLNY	Mortgage	Commercial Financing	632.2	7.45		0.11
6	iStar Financial Inc.	SFI	Mortgage	Commercial Financing	605.7	7.14		0.10
7	Resource Capital Corp.	RSO	Mortgage	Commercial Financing	506.8	5.97		0.09
8	Apollo Commercial Real Estate Finance Inc.	ARI	Mortgage	Commercial Financing	360.2	4.24		0.06
9	RAIT Financial Trust	RAS	Mortgage	Commercial Financing	234.4	2.76		0.04
10	Arbor Realty Trust Inc.	ABR	Mortgage	Commercial Financing	159.6	1.88		0.03
11	Ares Commercial Real Estate Corp.	ACRE	Mortgage	Commercial Financing	155.5	1.83		0.03
12	BRT Realty Trust	BRT	Mortgage	Commercial Financing	88.3	1.04		0.02
13	PMC Commercial Trust	PCC	Mortgage	Commercial Financing	78.4	0.92		0.01
14	Capital Trust Inc. CI A	CT	Mortgage	Commercial Financing	68.5	0.81		0.01
14	Subsector Totals				8,486.5	100.00	0.00	1.46
0	S&P Subsector Total				0.0			
32	Sector Totals				62,743.6		0.00	10.81
0	S&P Sector Total				0.0			
16	S&P 500 Large Cap				273,589.1		63.71	47.12
27	S&P 400 Mid Cap				113,017.0		26.32	19.46
29	S&P 600 Small Cap				42,789.8		9.97	7.37
72	S&P Index Total				429,395.9		100.00	73.95
167	Industry Total				580,622.2			100.00

¹ Equity market capitalization does not include operating partnership units or preferred stock.

U.S. REIT Merger and Acquisition Activity
Enterprise Value in Millions of Dollars
(2004 - 2012)

Year	Acquiror	Target	Acquiror Type	Enterprise Value	Announced	Completed	Status
2004	Ventas, Inc.	ElderTrust	Public REIT	191	19-Nov-03	5-Feb-04	Closed
	Aslan Realty Partners, LLC	Great Lakes REIT	Private Real Estate Company	252	21-Jan-04	27-Apr-04	Closed
	ProLogis/Eaton Vance Corporation	Keystone Property Trust	Public REIT/Investment Advisor	729	3-May-04	4-Aug-04	Closed
	Simon Property Group	Chelsea Property Group	Public REIT	3,000	21-Jun-04	14-Oct-04	Closed
	General Growth Properties, Inc.	The Rouse Company	Public REIT	7,000	19-Aug-04	12-Nov-04	Closed
	PL Retail LLC (Kimco Realty & DRA Advisors)	Price Legacy Corporation	Public REIT/Investment Advisor	3,500	24-Aug-04	21-Dec-04	Closed
	Total Public to Public			14,420	98%		
Total Public to Private			252	2%			
Total			14,672				
2005	Camden Property Trust	Summit Property Group	Public REIT	1,100	24-Oct-04	28-Feb-05	Closed
	iStar Financial, Inc.	Falcon Financial Investment Trust	Public REIT	120	20-Jan-05	2-Mar-05	Closed
	Colonial Properties Trust	Cornerstone Realty Income Trust	Public REIT	566	25-Oct-04	1-Apr-05	Closed
	Centro Properties Limited	Kramont Realty Trust	Australian LPT	120			Closed
	The Lightstone Group	Prime Group Realty Trust	Private Real Estate Company	1,500	17-Feb-05	1-Jul-05	Closed
	ProLogis	Catellus Development Corporation	Public REIT	3,819	6-Jun-05	15-Sep-05	Closed
	DRA Advisors LLC	CRT Properties, Inc.	Investment Advisor	890	17-Jun-05		Closed
	ING Clarion	Gables Residential Trust	Private Equity Joint Venture	4,900	7-Jun-05	30-Sep-05	Closed
	DRA Advisors LLC	Capital Automotive REIT	Investment Advisor	1,800	2-Sep-05	16-Dec-05	Closed
	Total Public to Public			5,725	39%		
	Total Public to Private			9,090	61%		
	Total			14,815			
	2006	Brandywine Realty Trust	Prentiss Properties Trust	Public REIT	1,921	3-Oct-05	4-Jan-06
CDP Capital-Financing Inc.		Criimi Mae Inc.	Investment Advisor/Pension Fund	1,700		19-Jan-06	Closed
Morgan Stanley Property Fund		AMLI Residential Properties	Investment Advisor/Brokerage Firm	2,100	23-Oct-05	7-Feb-06	Closed
Duke Realty Corporation		The Mark Winkler Company	Public REIT	855	2-Mar-06	4-Mar-06	Closed
CalEast Industrial Investors		CenterPoint Properties Trust	Real Estate Operating Partnership	2,436	7-Dec-05	8-Mar-06	Closed
Morgan Stanley Real Estate and Onex Real Estate		Town and Country Trust	Private Real Estate Joint Venture	1,500	19-Dec-05	31-Mar-06	Closed
Kimco Realty Corporation		Atlantic Realty Trust	Public REIT	83	1-Dec-05	31-Mar-06	Closed
Host Marriott Corporation		Starwood Hotels and Resorts	Public REIT	4,040	14-Nov-05	7-Apr-06	Closed
GE Real Estate, Inc. & Trizec Properties		Arden Realty Trust	Public non-REIT and REIT	3,032	21-Dec-05	2-May-06	Closed
Blackstone Group LP		MeriStar Hospitality Corporation	Private Equity Firm	2,600	20-Feb-06	2-May-06	Closed
LBA Realty LLC		Bedford Property Investors	Private Real Estate Company	432	10-Feb-06	5-May-06	Closed
Spirit Finance Corporation		Sun Capital Partners, Inc. (ShopKo Stores)	Public REIT	815	10-May-06	2-Jun-06	Closed
Mack-Cali Realty Corporation		Gale Real Estate Services Corp.	Public REIT	545	16-Feb-06	5-Jun-06	Closed
Blackstone Group LP		CarrAmerica Realty Corp.	Private Equity Firm	5,600	6-Mar-06	13-Jul-06	Closed
Archstone-Smith		Deutsche WohnAnlage GmbH	Public REIT	649	29-Jun-06	31-Jul-06	Closed
Public Storage Inc.		Shurgard Storage Centers Inc.	Public REIT	3,200	7-Mar-06	23-Aug-06	Closed
Westmont Hospitality and Cadim Inc. (Braveheart Holdin		Boykin Lodging Company	JV- Public Pension Fund	417	22-May-06	21-Sep-06	Closed
Accredited Home Lenders Holding Co.		Aames Investment Corporation	Mortgage Banking Firm	340	14-Sep-06	1-Oct-06	Closed
Brookfield Properties Corporation		Trizec Canada, Inc.	Real Estate Operating Company	2,670	5-Jun-06	5-Oct-06	Closed
Blackstone Group LP and Brookfield Properties Co.		Trizec Properties, Inc.	JV- Private Equity Firm & REOC	6,500	5-Jun-06	5-Oct-06	Closed
Health Care Property Investors		CNL Retirement Properties	Public REIT	5,300	2-May-06	6-Oct-06	Closed
Centro Watt		Heritage Property Investment Trust Inc.	JV - Australian LPT & Private Equity Firm	3,200	9-Jul-06	19-Oct-06	Closed
Kimco Realty Corporation		Pan Pacific Retail Properties	Public REIT	4,000	10-Jul-06	31-Oct-06	Closed
Morguard Corporation		Sizeler Property Investors, Inc.	Canadian REIT	324	7-Aug-06	10-Nov-06	Closed
Morgan Stanley		Glenborough Realty Trust, Inc.	Brokerage Firm	1,900	21-Aug-06	29-Nov-06	Closed
Health Care REIT		Windrose Medical Properties Trust	Public REIT	877	13-Sep-06	20-Dec-06	Closed
Koll/PER LLC		AmeriVest Properties	Real Estate Operating Partnership	273	18-Jul-06	29-Dec-06	Closed
Lexington Corporate Properties		Newkirk Realty Trust, Inc.	Public REIT	1,080	25-Jul-06	3-Jan-07	Closed
SL Green Realty Corp.		Reckson Associates Realty Corp.	Public REIT	6,000	3-Aug-06	25-Jan-07	Closed
Morgan Stanley		Saxon Capital	Brokerage Firm	706	8-Aug-06	4-Dec-06	Closed
Babcock & Brown Real Estate Investments		BNP Residential Properties Inc.	Investment Advisor/Brokerage Firm	766	31-Aug-06	28-Feb-07	Closed
Hospitality Properties Trust		TravelCenters of America Inc.	Public REIT	1,900	1-Sep-06	31-Jan-07	Closed
Geo Group		CentraCore Properties Trust	Correctional Facility Operator	428	19-Sep-06	24-Jan-07	Closed
Crown Castle International Corporation		Global Signal Inc.	Public Tower Company	4,000	16-Oct-06	12-Jan-07	Closed
Developers Diversified Realty Corp.		Inland Retail Real Estate Trust, Inc.	Public REIT	6,200	23-Oct-06	27-Feb-07	Closed
Record Realty Trust		Government Properties Trust, Inc.	Australian LPT	223	24-Oct-06	13-Apr-07	Closed
GE Capital Solutions		Truststreet Properties, Inc.	Financial Lending Company	3,000	30-Oct-06	27-Feb-07	Closed
JP Morgan-Special Situation Property Fund		Columbia Equity Trust	Pension Trust Fund	502	6-Nov-06	1-Mar-07	Closed
National HealthCare Corporation		National Health Realty	Health Care Provider (Public Company)	268	21-Dec-06	31-Oct-07	Closed
Total Public to Public				47,182	57%		
Total Public to Private				35,200	43%		
Total				82,381			

U.S. REIT Merger and Acquisition Activity
Enterprise Value in Millions of Dollars
(2004 - 2012)

Year	Acquiror	Target	Acquiror Type	Enterprise Value	Announced	Completed	Status	
2007	Ventas, Inc.	Sunrise Senior Living REIT	Public REIT	1,036	14-Jan-07	26-Apr-07	Closed	
	Simon Property Group; Farallon Capital Management	Mills Corporation	Public REIT; Investment Advisor	1,350	17-Jan-07	3-Apr-07	Closed	
	Morgan Stanley	CNL Hotels & Resorts Inc.	Brokerage Firm	6,702	19-Jan-07	12-Apr-07	Closed	
	Brookfield Asset Management Inc.	Longview Fibre	Asset Management Firm	2,150	5-Feb-07	20-Apr-07	Closed	
	Blackstone Group	Equity Office Properties Trust	Private Equity Firm	39,000	7-Feb-07	9-Feb-07	Closed	
	Credit-Based Asset Servicing and Securitization LLC (C	Fieldstone Investment Corporation	Mortgage Banking Firm	259	16-Feb-07	17-Jul-07	Closed	
	Centro Properties Group	New Plan Excel Realty Trust, Inc.	Australian LPT	6,200	27-Feb-07	20-Apr-07	Closed	
	Macquarie Bank Limited, Kaupthing Bank hf, et al.	Spirit Finance Corporation	Investment Advisor/Brokerage Firm	3,500	13-Mar-07	1-Aug-07	Closed	
	Inland American Real Estate Trust Inc.	Winston Hotels, Inc.	Asset Management Firm	460	3-Apr-07	2-Jul-07	Closed	
	Apollo Investment Corporation	Innkeepers USA Trust	Closed-End Investment Company	1,500	16-Apr-07	29-Jun-07	Closed	
	JER Partners	Highland Hospitality	Private Equity Firm	2,000	24-Apr-07	28-Jul-07	Closed	
	AP AIMCAP Holdings LLC	Eagle Hospitality Properties Trust, Inc.	Closed-End Investment Company	319	27-Apr-07	15-Aug-07	Closed	
	Morgan Stanley	Crescent Real Estate Equity	Brokerage Firm	6,500	23-May-07	3-Aug-07	Closed	
	Tishman Speyer/ Lehman Brothers	Archstone-Smith	Real Estate Company/ Brokerage Firm	22,200	29-May-07	5-Oct-07	Closed	
	Whitehall Street Global Real Estate, LP	Equity Inns, Inc.	Investment Advisor/Brokerage Firm	2,200	21-Jun-07	25-Oct-07	Closed	
	Sentinel Omaha LLC	America First Apartment Investors	Real Estate Advisory Firm	532	25-Jun-07	18-Sep-07	Closed	
	Liberty Property Trust	Republic Property Trust	Public REIT	850	24-Jul-07	4-Oct-07	Closed	
	Gramercy Capital Corp/New York	American Financial Realty Trust	Public REIT	1,094	5-Nov-07	1-Apr-08	Closed	
	Total Public to Public				10,530	11%		
	Total Public to Private				87,321	89%		
Total				97,851				
2008	American Campus Communities	GMH Communities Trust	Public REIT	1,400	12-Feb-08	11-Jun-08	Closed	
	Hypo Real Estate Bank AG	Quadra Realty Trust	Brokerage Firm	179	29-Jan-08	14-Mar-08	Closed	
	Boston Properties	Macklowe Properties (New York Office Portf	Public REIT	3,950	24-May-08	10-Jun-08	Closed	
	American Land Lease	Green Courte Real Estate Partners	Private Equity Firm	113	10-Dec-08	16-Mar-09	Closed	
	Total Public to Public				5,350	95%		
Total Public to Private				292	5%			
Total				5,642				
2009	<i>No Deals</i>							
2010	Brookfield Asset Management Inc.	Crystal River Capital, Inc.	Asset Management Firm	14	24-Feb-10	30-Jul-10	Closed	
	Tiptree Financial Partners, LP	Care Investment Trust, Inc.	Real Estate Advisory Firm	97	16-Mar-10	13-Aug-10	Closed	
	HCP, Inc.	HCR ManorCare, Inc.	Public REIT	6,080	14-Dec-10	8-Apr-11	Closed	
	Total Public to Public				6,080	98%		
Total Public to Private				111	2%			
Total				6,191				
2011	AMB Property Corp.	ProLogis	Public REIT	16,517	31-Jan-11	3-Jun-11	Closed	
	Ventas, Inc.	Nationwide Health Properties, Inc.	Public REIT	7,010	28-Feb-11	1-Jul-11	Closed	
	Ventas, Inc.	Cogdell Spencer, Inc.	Public REIT	635	27-Dec-11	2-Apr-12	Closed	
	Total Public to Public				24,162	100%		
Total Public to Private					0%			
Total				24,162				
Industry Totals: 2004-2012								
Total Public to Public				113,449	46%			
Total Public to Private				132,266	54%			
Total				245,715				

Industrial/Office

Name	Ticker	Share Price (\$)			FFO per Share		Price/FFO		FFO Growth (%)	FFO Payout (%)	Debt/EBITDA	Jul-12	QTD	Total Return (%)				Dividend Yield (%)	Equity Market Cap (\$M)	Implied Market Cap (\$M)	Debt Ratio (%)	Average Share Volume	Average Dollar Volume	Relative Liquidity	Long-Term Issuer Rating	
		31-Jul-2012	52 Week		2012	2013	2012	2013						2012-2013	2012: Q1	2012: Q1	YTD									1-Yr
Office																										
Alexandria Real Estate Equities Inc.	ARE	73.48	75.64	57.19	4.31	4.79	17.06	15.35	11.18	50.52	7.71	1.05	1.05	8.05	-7.76	27.57	0.02	2.78	4,538.4	4,538.4	39.9	240	17,450	0.384	BBB-	
BioMed Realty Trust Inc.	BMR	18.80	20.19	15.80	1.23	1.35	15.30	13.88	10.27	66.67	5.91	0.64	0.64	6.43	0.39	21.97	2.63	4.57	2,891.9	2,947.5	41.4	904	16,938	0.586	BBB-	
Boston Properties Inc.	BXP	110.90	113.17	84.72	4.84	5.27	22.92	21.05	8.89	49.11	7.74	2.33	2.33	12.53	5.55	31.05	7.73	1.98	16,614.5	16,635.0	33.8	694	76,275	0.459	A-	
Brandywine Realty Trust	BDN	11.88	12.34	7.09	1.34	1.40	8.88	8.51	4.30	46.88	7.89	-2.54	-2.54	30.30	5.39	19.48	-6.48	5.05	1,695.6	1,727.2	60.1	1,640	19,489	1.149	BBB-	
CommonWealth REIT	CWH	18.24	21.00	15.95	3.38	3.34	5.40	5.46	-1.04	57.47	6.72	-2.00	-2.00	18.82	-14.01	6.86	-4.12	10.96	1,525.8	1,525.8	71.0	460	8,685	0.569	BBB-	
Corporate Office Properties Trust	OFC	22.26	27.19	19.37	2.05	2.04	10.83	10.89	-0.54	76.39	9.51	-5.32	-5.32	7.29	-23.75	-8.62	-5.56	4.94	1,591.1	1,691.1	55.4	504	11,399	0.714	BBB-	
Douglas Emmett Inc.	DEI	23.51	24.47	15.92	1.38	1.44	17.05	16.35	4.28	37.14	10.03	1.77	1.77	30.64	20.89	35.80	3.63	2.55	3,281.9	4,066.7	45.2	673	22,913	0.698	BBB-	
Franklin Street Properties Corp.	FSP	10.37	13.05	9.58	0.92	0.93	11.24	11.18	0.54	79.17	5.18	-0.19	-0.19	10.17	-11.72	-4.30	-1.38	7.33	860.1	860.1	36.0	248	2,641	0.307	BBB-	
Government Properties Income Trust	GOV	22.90	24.66	20.20	2.14	2.15	10.72	10.64	0.74	79.25	3.79	3.10	3.10	7.13	-0.51	12.58	-	7.34	1,076.5	1,076.5	29.4	263	6,036	0.561	BBB-	
Healthcare Trust of America Inc	HTA	9.19	9.98	9.19	-	-	-	-	-	0.00	4.96	-7.36	-7.36	-6.91	-	-	-	0.52	2,119.2	2,120.8	-	250	2,429	0.115	BBB-	
Highwoods Properties Inc.	HIW	33.87	35.48	26.51	2.71	2.71	12.51	12.50	0.09	60.71	6.24	0.65	0.65	17.17	3.89	15.94	6.71	5.02	2,503.8	2,630.1	42.2	622	21,077	0.842	BBB-	
Hudson Pacific Properties Inc.	HPP	17.78	18.20	10.85	0.86	0.94	20.78	18.86	10.18	0.00	5.44	2.13	2.13	27.56	20.70	-	-	2.81	809.0	852.6	39.1	146	2,576	0.318	BBB-	
Kilroy Realty Corp.	KRC	47.34	49.88	29.25	2.34	2.64	20.25	17.94	12.87	71.43	7.43	-2.21	-2.21	26.24	27.13	31.24	-1.27	2.96	3,233.7	3,315.0	35.2	578	27,987	0.865	BBB-	
Mack-Cali Realty Corp.	CLJ	26.79	31.25	24.37	2.60	2.57	10.32	10.43	-1.07	60.81	4.64	-6.42	-6.42	5.31	-13.99	4.61	-0.58	6.72	2,352.2	2,678.7	40.1	788	22,507	0.957	BBB	
Mission West Properties	MSW	8.81	10.31	7.00	0.51	0.55	17.27	15.92	8.50	100.00	4.46	2.20	2.20	1.40	16.61	16.88	0.84	5.90	198.3	926.1	24.2	104	902	0.455	BBB-	
MPG Office Trust Inc.	MPG	2.96	3.26	1.68	0.27	-0.12	10.83	-25.37	-142.68	0.00	11.58	47.26	47.26	48.74	-10.57	62.47	-36.08	0.00	150.8	169.9	95.3	456	1,095	0.726	BBB-	
Parkway Properties Inc.	PKY	11.13	13.58	9.16	1.18	1.21	9.43	9.21	2.43	17.44	8.32	-2.71	-2.71	14.52	-35.06	-4.97	-18.76	2.70	244.0	264.1	70.8	97	1,112	0.456	BBB-	
Piedmont Office Realty Trust Inc.	PDM	17.06	19.69	15.42	1.39	1.40	12.30	12.23	0.60	57.14	4.68	-0.87	-0.87	2.51	-11.89	7.97	-7.18	4.69	2,945.6	2,945.6	31.4	938	15,998	0.543	BBB	
SL Green Realty Corp.	SLG	78.75	83.31	55.14	4.82	4.93	16.33	15.98	2.19	22.73	8.04	-1.86	-1.86	18.94	-2.83	46.31	-6.08	1.27	7,058.7	7,298.9	47.2	587	46,492	0.659	BB+	
AVERAGE		29.79	31.93	22.86	2.13	2.20	13.86	11.17	-3.79	49.10	6.86	1.56	1.56	16.32	-1.75	18.99	-4.12	4.22	2,931.4	3,172.1	46.5	552	17,053	0.598		
Industrial																										
DCT Industrial Trust Inc.	DCT	6.26	6.39	4.02	0.41	0.43	15.27	14.63	4.37	63.64	7.43	0.47	0.47	25.11	21.76	17.33	-2.74	4.47	1,552.6	1,709.3	45.4	2,596	16,096	1.037	BBB-	
EastGroup Properties Inc.	EGP	53.48	54.68	36.01	3.09	3.21	17.28	16.65	3.79	67.53	6.81	0.34	0.34	25.60	25.87	21.46	10.94	3.89	1,511.6	1,511.6	36.2	177	9,422	0.623	BBB-	
First Industrial Realty Trust Inc.	FR	12.74	13.02	7.54	0.96	1.08	13.23	11.84	11.72	0.00	7.08	0.95	0.95	24.54	7.51	44.29	-17.56	0.00	1,129.2	1,195.8	56.7	515	6,492	0.575	B+	
Monmouth Real Estate Investment Corp. (CI A)	MNR	11.14	11.90	7.57	0.67	0.63	14.47	17.68	-18.18	57.69	4.11	-4.95	-4.95	25.42	44.50	29.64	13.73	5.39	444.8	444.8	39.7	114	1,300	0.292	BBB-	
Prologis Inc.	PLD	32.33	36.25	22.63	1.72	1.75	18.80	18.47	1.78	50.00	5.61	-2.71	-2.71	15.03	-5.80	22.50	-5.79	3.46	14,839.5	14,946.8	42.7	2,363	76,958	0.519	BBB-	
STAG Industrial Inc.	STAG	14.46	15.11	9.91	1.10	1.20	13.10	12.03	8.89	-	6.79	-0.82	-0.82	30.90	28.07	-	-	7.47	336.1	446.6	47.1	193	2,844	0.846	BBB-	
Terrano Realty Corp.	TRNO	14.91	16.10	11.42	0.66	0.85	22.76	17.64	29.01	83.33	8.14	-0.56	-0.56	0.59	-7.79	-	-	3.22	198.4	198.4	26.9	45	692	0.349	BBB-	
AVERAGE		20.76	21.92	14.16	1.25	1.31	16.42	15.56	5.91	53.70	6.57	-1.04	-1.04	21.03	16.30	27.04	-0.29	3.99	2,858.9	2,921.9	42.1	857	16,258	0.606		
Mixed																										
Duke Realty Corp.	DRE	14.46	15.04	9.70	1.01	1.11	14.36	13.05	10.04	80.95	7.40	-1.23	-1.23	22.92	8.62	21.62	-8.91	4.70	3,852.8	3,920.4	51.6	3,170	45,968	1.193	BBB-	
First Potomac Realty Trust	FPO	11.59	15.06	11.10	0.98	1.13	11.85	10.29	15.13	74.07	9.48	-1.53	-1.53	-8.53	-21.40	13.65	-3.54	6.90	590.7	624.6	59.2	329	3,861	0.654	BBB-	
Gladstone Commercial Corp.	GOOD	17.29	18.73	14.40	1.55	1.72	11.15	10.05	10.97	98.68	7.63	4.53	4.53	3.62	8.63	18.25	9.17	8.68	189.3	189.3	62.5	35	600	0.317	BBB-	
Liberty Property Trust	LRY	36.29	37.62	27.49	2.59	2.69	14.00	13.49	3.79	69.85	5.43	-1.49	-1.49	20.71	13.28	15.94	6.35	5.24	4,258.2	4,396.4	36.7	695	25,367	0.596	BBB	
PS Business Parks Inc.	PSB	67.61	71.05	46.70	4.42	4.85	15.29	13.94	9.66	43.56	3.11	-0.16	-0.16	23.65	22.67	12.90	9.42	2.60	1,631.3	2,125.2	20.2	103	7,149	0.438	BBB+	
AVERAGE		29.45	31.50	21.88	2.11	2.30	13.33	12.16	9.92	73.43	6.61	0.02	0.02	12.47	6.36	16.47	2.50	5.62	2,104.5	2,251.2	46.1	866	16,589	0.639		

Retail

Name	Ticker	Share Price (\$)			FFO per Share		Price/FFO		FFO Growth (%)	FFO Payout (%)	Debt/EBITDA	Total Return (%)					Dividend Yield (%)	Equity Market Cap (\$M)	Implied Market Cap (\$M)	Debt Ratio (%)	Average Share Volume	Average Dollar Volume	Relative Liquidity	Long-Term Issuer Rating	
		52 Week		Estimates (\$)		Estimates																			
		High	Low	2012	2013	2012	2013	2012 - 2013	2012: Q1	2012: Q1	Jul-12	QTD	YTD	1-Yr	3-Yr	5-Yr									
Shopping Centers																									
Acadia Realty Trust	AKR	23.94	24.13	17.85	1.04	1.21	22.94	19.81	15.78	85.71	9.63	3.28	3.28	20.77	18.05	25.14	6.06	3.01	1,050.6	1,065.5	46.7	290	6,840	0.651	
Alexander's Inc.	ALX	427.27	456.73	333.00	22.37	23.53	19.10	18.16	5.19	68.31	8.04	-0.89	-0.89	17.70	10.26	18.49	5.77	3.51	2,170.8	2,170.8	39.9	2	1,038	0.048	
Cedar Realty Trust Inc	CDR	5.15	5.40	2.75	0.40	0.44	13.01	11.81	10.10	71.43	12.12	1.98	1.98	21.89	11.23	4.23	-11.35	3.88	356.9	359.8	71.2	226	1,157	0.324	
DDR Corp	DDR	15.04	15.06	10.17	1.01	1.11	14.89	13.56	9.79	38.10	9.73	2.73	2.73	25.68	6.04	41.08	-16.22	3.19	4,245.2	4,250.8	50.3	2,568	38,031	0.896	
Equity One Inc.	EQY	21.69	21.96	14.89	1.09	1.16	19.95	18.77	6.27	81.48	6.93	2.31	2.31	30.65	17.45	19.00	4.58	4.06	2,486.7	2,488.8	37.9	356	7,665	0.308	BBB-
Excel Trust Inc.	EXL	12.24	13.12	8.96	0.90	0.90	15.58	13.59	14.72	84.21	5.15	2.34	4.79	12.90	-	-	-	5.31	410.3	426.0	40.5	84	1,022	0.249	
Federal Realty Investment Trust	FRT	108.66	108.66	80.15	4.26	4.55	25.48	23.89	6.66	66.35	4.82	4.39	4.39	21.42	28.14	28.17	11.53	2.54	6,900.0	6,935.4	25.5	353	37,674	0.546	BBB+
Inland Real Estate Corp.	IRC	7.98	9.05	6.66	0.86	0.91	9.25	8.75	5.80	71.25	8.22	-4.21	-4.21	9.05	-2.92	9.76	-5.43	7.14	708.1	708.1	49.7	390	3,300	0.466	
Kimco Realty Corp.	KIM	19.49	19.94	14.11	1.24	1.32	15.72	14.74	6.62	61.29	5.62	3.44	3.44	22.41	7.03	30.79	-7.45	3.90	7,909.7	7,941.5	34.8	3,624	69,430	0.878	BBB+
Kite Realty Group Trust	KRG	5.03	5.54	3.30	0.42	0.46	11.98	10.96	9.33	66.67	11.31	2.00	2.00	15.63	16.70	22.62	-14.89	4.77	320.0	359.4	63.4	128	642	0.200	
Ramco-Gershenson Properties Trust	RPT	12.74	12.98	7.60	1.00	1.05	12.69	12.09	4.98	62.79	8.48	1.35	1.35	33.12	10.36	18.84	-10.29	5.13	595.9	629.2	50.8	206	2,556	0.429	
Regency Centers Corp.	REG	47.85	48.89	33.37	2.46	2.57	19.47	18.62	4.60	84.09	6.04	0.59	0.59	29.84	11.38	19.85	-0.90	3.87	4,301.7	4,310.2	34.0	648	30,736	0.715	BBB
Retail Opportunity Investment Corp.	ROIC	12.19	12.60	10.45	0.74	0.86	16.43	14.14	16.17	70.59	4.50	1.08	1.08	5.12	14.13	10.40	-	4.27	613.7	613.7	28.2	228	2,794	0.455	
Retail Properties of America Inc.	RPAI	9.97	10.22	8.64	0.85	0.89	11.76	11.18	5.23	-	8.98	2.57	2.57	15.90	-	-	-	1.66	848.3	848.3	-	229	2,238	0.264	
Roberts Realty Investors Inc.	RPI	1.46	2.03	1.27	-	-	-	-	-	-	-	2.04	2.04	10.02	-32.94	16.09	-23.20	0.00	15.2	18.4	56.5	2	3	0.020	
Saul Centers Inc.	BFS	41.64	43.45	31.54	2.36	2.55	17.68	16.33	8.28	62.07	6.49	-2.05	-2.05	20.89	9.66	11.11	3.24	3.46	812.0	1,099.9	44.1	48	2,021	0.249	
Tanger Factory Outlet Centers Inc.	SKT	32.20	33.58	24.73	1.62	1.77	19.84	18.17	9.18	55.56	5.53	1.13	1.13	12.03	20.55	25.83	18.15	2.61	2,982.6	3,181.0	26.9	490	15,833	0.531	BBB
Urstadt Biddle Properties Inc. CI A	UBA	18.99	20.15	15.42	1.17	1.23	16.23	15.50	4.70	85.34	3.07	-2.75	-2.75	9.19	12.97	13.45	10.95	5.21	395.3	395.3	29.8	51	1,004	0.254	
Weinquarter Realty Investors	WRI	26.88	27.74	19.35	1.80	1.84	14.96	14.64	2.16	63.04	7.61	2.05	2.05	26.09	9.62	26.30	0.33	4.32	3,248.1	3,290.6	40.4	601	16,036	0.494	BBB
AVERAGE		44.76	46.91	33.91	2.53	2.69	16.50	15.26	8.09	69.31	7.35	1.23	1.23	18.68	10.03	20.06	-1.82	3.78	2,124.8	2,162.8	42.8	554	12,633	0.420	
Regional Malls																									
CBL & Associates Properties Inc.	CBL	19.73	20.51	10.91	2.10	2.15	9.41	9.16	2.72	42.86	7.05	0.97	0.97	28.64	17.28	56.54	-0.27	4.46	2,927.2	3,747.7	56.6	2,433	47,565	1.625	
General Growth Properties Inc.	GGP	18.12	18.79	11.33	0.90	1.04	20.21	17.42	16.03	142.86	17.42	0.72	0.72	25.62	13.90	132.61	-10.92	2.21	17,001.7	17,121.3	51.0	3,536	63,558	0.374	BB
Glimcher Realty Trust	GRT	10.02	10.58	6.51	0.61	0.72	16.31	13.87	17.63	83.33	9.88	-1.96	-1.96	11.11	6.39	53.12	-3.93	3.99	1,396.8	1,424.2	54.7	1,228	12,554	0.899	B+
Macerich Co.	MAC	58.41	62.29	40.21	3.33	3.33	17.54	17.52	0.11	74.32	6.42	-1.08	-1.08	17.64	14.38	51.32	2.57	3.77	7,705.2	8,364.5	34.3	975	57,046	0.740	
Pennsylvania Real Estate Investment Trust	PEI	14.36	15.62	7.12	1.79	1.87	8.03	7.69	4.43	34.88	9.82	-4.14	-4.14	40.82	3.98	47.55	-9.79	4.46	803.5	836.6	69.9	315	4,704	0.585	
Rouse Properties Inc.	RSE	13.84	14.81	10.70	-	-	-	-	-	-	-	2.67	2.67	9.20	-	-	-	0.51	676.5	676.5	71.2	225	3,090	0.457	
Simon Property Group Inc.	SPG	160.49	163.03	106.50	7.74	8.28	20.72	19.39	6.90	52.20	3.89	3.10	3.10	26.15	37.11	46.64	18.03	2.49	48,644.0	58,450.7	30.1	1,118	176,722	0.363	A-
Taubman Centers Inc.	TCO	77.52	79.41	48.27	3.27	3.54	23.73	21.89	8.39	61.67	7.16	0.47	0.47	26.44	33.08	48.19	14.65	2.39	4,555.8	6,608.4	31.5	493	38,016	0.834	
AVERAGE		46.56	48.13	30.19	2.82	2.99	16.57	15.28	8.03	70.30	8.81	0.09	0.09	23.20	18.02	62.28	1.48	3.04	10,463.9	12,153.7	49.9	1,290	50,407	0.735	
Free Standing																									
Agree Realty Corp.	ADC	23.53	25.86	20.19	2.00	2.08	11.78	11.34	3.88	80.00	3.85	6.33	6.33	0.03	11.17	14.89	4.10	6.80	269.1	277.3	29.0	42	967	0.359	
American Realty Capital Trust Inc	ARCT	11.02	11.24	10.23	0.68	0.85	16.33	12.96	25.93	135.77	21.26	1.46	1.46	7.53	-	-	-	2.26	1,746.4	1,746.4	34.8	1,752	19,156	1.097	BB
Getty Realty Corp.	GTY	18.58	19.68	12.77	1.23	1.45	15.15	12.81	18.21	0.00	3.77	-2.98	-2.98	34.11	-16.36	0.28	1.66	3.36	620.5	620.5	25.1	149	2,823	0.455	
National Retail Properties Inc.	NNN	29.50	30.05	22.92	1.69	1.78	17.42	16.55	5.30	98.72	4.91	5.69	5.69	16.56	24.29	21.59	13.70	5.36	3,157.0	3,157.0	32.3	1,389	40,417	1.280	BBB
Realty Income Corp.	O	41.20	42.51	30.54	2.01	2.16	20.50	19.09	7.36	94.89	4.74	-1.01	-1.01	20.99	33.13	26.99	18.86	4.26	5,487.9	5,487.9	27.8	670	27,996	0.510	BBB
AVERAGE		24.77	25.87	19.33	1.52	1.66	16.23	14.55	12.13	81.88	7.71	1.90	1.90	17.93	13.06	15.94	9.58	4.41	2,256.2	2,257.8	29.8	800	18,272	0.740	

Residential

Name	Ticker	Share Price (\$)			FFO per Share		Price/FFO		FFO		Debt/		Total Return (%)					Dividend Yield (%)	Equity Market Cap (\$M)	Implied Market Cap (\$M)	Debt Ratio (%)	Average Share Volume	Average Dollar Volume	Relative Liquidity	Long-Term Issuer Rating
		52 Week			Estimates (\$)		Estimates		Growth (%)	Payout (%)	EBITDA														
		High	Low		2012	2013	2012	2013	2012 - 2013	2012: Q1	2012: Q1	Jul-12	QTD	YTD	1-Yr	3-Yr	5-Yr								
Apartments																									
American Campus Communities Inc.	ACC	47.66	47.69	35.08	2.00	2.31	23.78	20.64	15.19	57.20	6.21	5.96	5.96	15.32	32.37	33.18	18.70	2.83	4,276.6	4,319.5	32.5	1,434	66,392	1.552	BBB-
Apartment Investment & Management Co.	AIV	27.43	28.27	20.29	1.76	2.01	15.56	13.62	14.20	45.00	9.19	1.48	1.48	21.41	2.90	46.36	3.00	2.62	3,652.2	3,874.6	59.9	1,573	43,185	1.182	BB+
Associated Estates Realty Corp.	AEC	14.93	17.73	14.46	1.22	1.33	12.25	11.19	9.52	68.00	8.77	1.10	1.10	-3.14	-13.95	42.77	9.76	4.82	739.0	740.1	46.5	430	6,358	0.860	BB+
AvalonBay Communities Inc.	AVB	147.09	151.00	110.78	5.47	6.14	26.90	23.96	12.25	69.73	5.78	3.97	3.97	14.22	12.78	40.90	11.34	2.64	13,985.6	13,986.7	20.0	592	86,474	0.618	BBB+
BRE Properties Inc.	BRE	52.68	53.26	40.66	2.37	2.59	22.26	20.37	9.27	67.54	6.76	5.32	5.32	5.99	3.56	35.30	5.76	2.92	4,040.4	4,040.4	30.5	400	20,729	0.513	BBB
Camden Property Trust	CPT	71.31	71.59	53.09	3.53	3.86	20.20	18.45	9.49	59.04	4.40	5.38	5.38	16.57	10.05	39.30	10.89	3.14	5,725.3	5,888.7	31.0	513	35,933	0.628	BBB
Campus Crest Communities Inc.	CCG	10.96	12.17	9.12	0.74	0.84	14.89	12.98	14.71	106.67	8.33	5.49	5.49	12.10	-3.03	-	-	5.84	422.6	426.2	43.8	343	3,644	0.862	BBB
Colonial Properties Trust	CLP	22.65	23.20	16.82	1.25	1.39	18.07	16.31	10.78	60.00	8.46	2.30	2.30	10.39	8.50	46.47	-2.13	3.18	1,975.2	2,137.6	47.3	756	17,074	0.964	BB+
Education Realty Trust Inc.	EDR	11.72	11.79	7.89	0.48	0.59	24.42	20.00	22.10	58.33	5.72	6.70	6.70	17.04	37.36	38.23	3.06	3.41	1,110.6	1,123.1	25.2	686	7,852	0.707	BBB
Equity Residential	EQR	63.31	65.47	49.66	2.86	3.02	22.17	20.96	5.78	56.25	7.62	1.52	1.52	12.25	5.23	42.48	14.48	2.13	19,032.5	19,889.2	32.8	1,612	102,574	0.539	BBB+
Essex Property Trust Inc.	ESS	157.36	160.33	114.60	6.73	7.42	23.39	21.22	10.25	63.80	6.88	2.23	2.23	13.65	15.61	39.35	12.39	2.80	5,541.4	5,893.9	30.7	235	36,978	0.667	BBB
Home Properties Inc.	HME	65.61	66.87	52.62	3.99	4.25	16.46	15.42	6.73	67.35	7.37	6.93	6.93	16.45	4.49	28.49	13.25	4.02	3,166.7	3,866.8	45.0	525	33,797	1.067	BBB
Mid-America Apartment Communities Inc.	MAA	69.23	71.48	55.35	4.43	4.77	15.64	14.52	7.71	58.93	6.47	2.44	2.44	14.11	1.91	25.75	14.50	3.81	2,815.5	2,949.5	35.8	205	14,160	0.503	BBB
Post Properties Inc.	PPS	51.65	52.33	32.80	2.48	2.53	20.85	20.45	1.94	34.38	4.46	5.52	5.52	19.34	24.44	58.22	7.35	1.94	2,749.7	2,757.5	27.9	447	22,664	0.824	BBB-
Preferred Apartment Communities Inc.	APTS	7.75	8.36	5.70	-	-	-	-	-	-	13.39	7.94	7.94	30.20	1.70	-	-	6.71	40.1	-	-	14	106	0.264	BBB
UDR Inc.	UDR	26.61	27.06	20.77	1.36	1.45	19.53	18.31	6.67	61.43	9.16	3.85	3.85	8.75	4.67	41.55	9.82	3.31	7,054.2	7,258.2	35.2	2,119	56,158	0.796	BBB
AVERAGE		53.00	54.29	39.98	2.71	2.97	19.76	17.89	10.44	62.24	7.43	4.26	4.26	14.04	9.29	39.88	9.44	3.51	4,770.5	5,276.8	36.3	743	34,630	0.778	
Manufactured Homes																									
Equity Lifestyle Properties Inc.	ELS	71.92	72.99	58.59	4.57	4.87	15.72	14.78	6.40	29.07	6.11	4.28	4.28	9.25	13.12	22.87	12.08	2.43	2,971.0	3,255.6	42.3	284	20,152	0.678	BBB
Sun Communities Inc.	SUI	46.59	47.29	33.26	3.27	3.55	14.27	13.14	8.58	70.79	7.65	6.79	6.79	31.30	29.73	57.26	24.44	5.41	1,232.4	1,328.9	51.5	157	7,187	0.583	BBB
UMH Properties Inc.	UMH	11.18	12.02	8.73	-	-	-	-	-	105.88	5.87	4.19	4.19	24.10	12.29	17.82	3.94	6.44	178.5	178.5	41.1	30	339	0.190	BBB
AVERAGE		43.23	44.10	33.53	3.92	4.21	15.00	13.96	7.49	68.58	6.55	5.09	5.09	21.55	18.38	32.65	13.48	4.76	1,460.7	1,587.7	45.0	157	9,226	0.484	

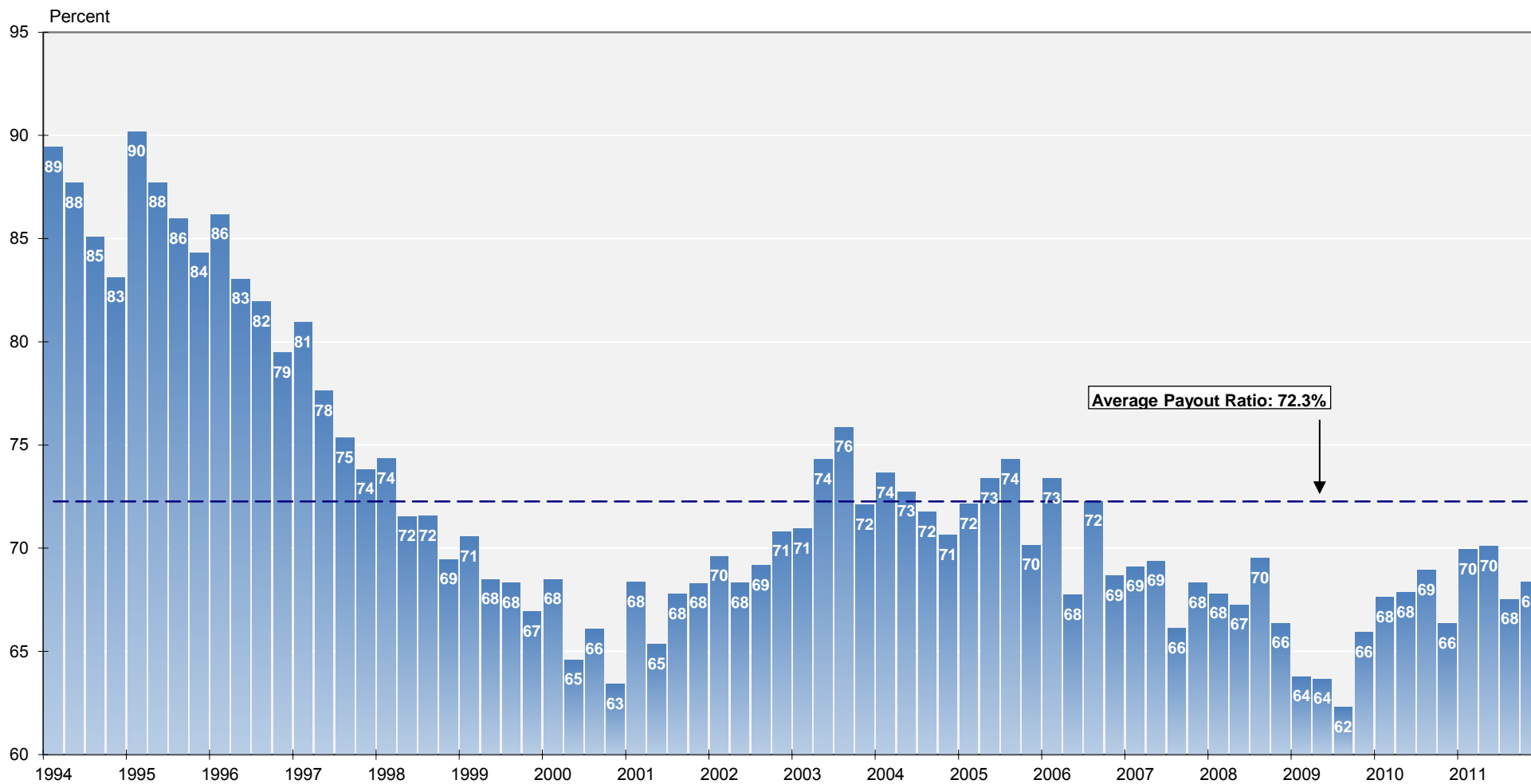
Name	Ticker	Share Price (\$)			FFO per Share		Price/FFO		FFO		Debt/EBITDA	Total Return (%)					Dividend Yield (%)	Equity Market Cap (\$M)	Implied Market Cap (\$M)	Debt Ratio (%)	Average Share Volume	Average Dollar Volume	Relative Liquidity	Long-Term Issuer Rating	
		52 Week		2012	2013	Estimates		2012-2013	2012: Q1	2012: Q1		Jul-12	QTD	YTD	1-Yr	3-Yr									5-Yr
		High	Low			2012	2013																		
Diversified																									
American Assets Trust Inc.	AAT	26.00	26.48	16.96	1.23	1.31	21.22	19.80	7.21	67.74	7.30	7.22	7.22	29.15	23.08	-	-	3.23	1,021.4	1,499.7	42.3	139	3,475	0.340	
CapLease Inc.	LSE	4.55	4.74	3.21	0.62	0.64	7.40	7.08	4.44	34.21	9.51	9.64	9.64	16.28	9.24	20.83	-7.54	5.71	301.7	302.4	81.4	204	907	0.301	
CoreSite Realty Corp.	COR	26.66	27.78	13.00	1.49	1.70	17.89	15.64	14.34	50.00	1.79	3.25	3.25	51.83	63.72	-	-	2.70	559.6	1,235.3	11.9	179	4,771	0.853	
Cousins Properties Inc.	CUZ	7.59	7.99	5.40	0.52	0.58	14.60	13.12	11.22	34.62	15.03	-2.06	-2.06	19.82	-8.46	-1.05	-17.33	2.37	786.6	786.6	37.0	392	3,037	0.386	
Digital Realty Trust Inc.	DFT	78.07	80.31	52.70	4.33	5.05	18.03	15.47	16.55	133.02	4.51	4.00	4.00	19.48	33.11	29.38	23.24	3.74	9,506.5	9,886.9	29.5	1,723	132,083	1.389	
DuPont Fabros Technology Inc.	DFT	26.90	28.94	19.22	1.51	1.93	17.83	13.90	28.24	35.29	3.67	-5.32	-5.32	12.19	7.79	38.46	-	2.23	1,701.0	2,211.2	25.8	820	12,649	1.332	
Entertainment Properties Trust	EPR	45.16	48.09	37.37	3.64	3.93	12.39	11.78	5.18	81.40	5.65	9.85	9.85	6.93	3.98	26.23	8.16	6.64	2,099.8	2,099.8	37.1	277	11,857	0.565	
Investors Real Estate Trust	IRET	8.16	8.31	6.89	0.67	0.71	12.15	11.43	6.30	81.25	7.92	2.90	2.90	15.75	7.53	2.98	3.63	6.37	703.1	863.0	57.7	333	2,690	0.383	
Lexington Realty Trust	LXP	8.94	9.26	5.96	0.94	0.96	9.51	9.27	2.55	52.08	5.88	5.55	5.55	22.88	13.37	37.98	-0.62	5.59	1,379.7	1,420.2	54.9	807	7,129	0.517	
One Liberty Properties Inc.	OLP	18.89	20.28	14.07	1.52	1.60	12.43	11.81	5.26	86.84	6.23	0.32	0.32	18.62	31.89	56.07	9.71	6.99	279.3	279.3	47.4	32	620	0.222	
Select Income REIT	SIR	25.16	26.09	21.60	2.57	2.60	9.78	9.68	1.04	0.00	-	7.96	7.96	17.94	-	-	-	1.95	785.0	785.0	32.2	69	1,699	0.216	
Vornado Realty Trust	VNO	83.50	88.07	69.97	4.98	5.05	16.78	16.55	1.39	37.91	5.16	-0.57	-0.57	10.43	-7.61	22.01	-0.94	3.31	15,384.0	16,346.1	-	937	78,740	0.512	
Washington Real Estate Investment Trust	WRE	26.70	31.05	25.64	1.90	1.97	14.09	13.58	3.78	92.29	6.31	-6.15	-6.15	0.62	-11.34	7.69	3.95	6.50	1,759.4	1,759.4	39.1	567	16,008	0.910	
Whitestone REIT	WSR	13.65	13.90	10.53	1.09	1.24	12.58	11.05	13.82	114.00	6.32	-0.48	-0.48	20.57	18.63	-	-	8.35	138.6	151.0	48.2	35	476	0.343	
Winthrop Realty Trust	FUR	12.16	12.53	8.16	1.43	1.52	8.48	8.00	6.05	38.69	4.71	0.00	0.00	22.92	16.99	14.91	-11.76	5.35	399.3	399.3	40.5	114	1,384	0.347	
AVERAGE		27.47	28.92	20.71	1.90	2.05	13.68	12.54	8.49	62.62	6.43	2.41	2.41	19.11	14.42	23.23	1.05	4.74	2,453.7	2,668.4	41.8	442	19,168	0.574	
Health Care																									
HCP Inc.	HCP	47.21	47.21	31.44	2.74	2.91	17.22	16.24	6.05	78.13	5.00	6.93	6.93	16.75	35.26	29.36	18.48	4.24	19,804.8	20,081.3	32.0	2,237	101,496	0.512	
Health Care REIT Inc.	HCN	62.23	62.24	43.40	3.59	3.92	17.33	15.86	9.29	91.36	6.45	6.74	6.74	17.13	24.66	22.87	18.24	4.76	13,253.4	13,253.4	39.6	1,561	94,066	0.710	
Healthcare Realty Trust Inc.	HR	24.56	24.56	15.16	1.35	1.42	18.25	17.26	5.75	85.71	7.94	3.02	3.02	35.86	33.45	14.92	7.91	4.89	1,911.5	1,911.5	44.9	472	11,418	0.597	
LTC Properties Inc.	LTC	35.70	37.20	22.14	2.28	2.44	15.66	14.66	6.80	77.68	2.08	-1.20	-1.20	19.34	39.21	20.40	19.51	4.87	1,082.9	1,083.8	14.9	212	7,665	0.708	
Medical Properties Trust Inc.	MPW	9.85	10.74	8.39	0.84	1.02	11.66	9.69	20.39	133.33	6.21	2.39	2.39	4.19	-8.92	21.44	6.91	8.12	1,323.5	1,323.5	41.9	803	7,850	0.593	
National Health Investors Inc.	NHI	53.69	54.36	40.10	3.12	3.27	17.24	16.41	5.04	84.42	1.14	5.44	5.44	25.32	25.36	22.22	19.51	5.25	1,490.5	1,490.5	8.1	91	4,826	0.324	
Omega Healthcare Investors Inc.	OHI	24.24	24.34	14.60	2.06	2.16	11.77	11.24	4.65	89.13	5.01	9.63	9.63	32.52	33.45	21.59	21.87	6.93	2,564.6	2,564.6	40.5	913	21,619	0.843	
Sabra Healthcare REIT Inc.	SBRA	18.52	19.02	8.65	1.49	1.70	12.46	10.87	14.64	103.13	4.93	8.24	8.24	59.79	42.12	-	-	7.13	682.8	682.8	41.2	333	5,960	0.873	
Senior Housing Properties Trust	SNH	22.75	23.90	19.94	1.82	1.92	12.48	11.84	5.36	90.48	4.85	3.64	3.64	6.77	1.87	14.23	13.42	6.68	3,700.2	3,700.2	35.6	1,939	44,035	1.190	
Universal Health Realty Income Trust	UHT	43.54	43.73	32.21	-	-	-	-	93.85	2.77	4.84	4.84	4.84	15.15	12.65	15.98	16.03	5.65	551.0	551.0	28.2	38	1,607	0.292	
Ventas Inc.	VTR	67.25	67.33	44.99	3.64	3.94	18.45	17.05	8.20	83.78	5.50	6.54	6.54	24.67	29.54	29.67	21.45	3.69	19,786.9	19,912.1	30.3	1,467	95,048	0.480	
AVERAGE		37.23	37.69	25.55	2.29	2.47	15.25	14.11	8.62	91.91	4.72	5.11	5.11	23.41	24.42	21.77	16.33	5.66	6,013.8	6,050.4	32.5	915	35,963	0.647	
Lodging/Resorts																									
Ashford Hospitality Trust	AHT	7.63	9.78	6.15	1.60	1.75	4.77	4.36	9.64	-	12.86	-9.49	-9.49	-2.19	-26.33	39.79	-0.93	5.77	518.5	652.9	75.0	389	3,099	0.598	
Chatham Lodging Trust	CLDT	13.75	14.81	9.20	1.37	1.60	10.02	8.59	16.58	-	10.42	-3.71	-3.71	31.13	-5.97	-	-	5.82	190.0	190.0	55.0	34	488	0.257	
Chesapeake Lodging Trust	CHSP	16.97	18.57	11.30	1.58	1.87	10.76	9.06	18.83	111.11	11.03	-1.45	-1.45	12.55	8.63	-	-	5.19	545.7	545.7	42.1	80	1,342	0.246	
DiamondRock Hospitality Co.	DRH	9.46	10.98	6.52	0.73	0.86	12.87	11.04	16.64	100.00	14.98	-7.25	-7.25	-0.33	-4.21	15.15	-7.58	3.38	1,777.8	1,777.8	34.4	2,014	19,785	1.113	
FelCor Lodging Trust Inc.	FCH	4.84	5.07	2.03	0.25	0.30	19.01	15.93	19.30	-	12.68	2.98	2.98	58.69	-5.84	27.22	-23.73	0.00	602.5	605.6	77.3	675	3,234	0.537	
Hersha Hospitality Trust (CI A)	HT	4.86	5.81	3.18	0.39	0.47	12.40	10.24	21.11	-	15.83	-7.95	-7.95	1.85	-2.29	27.47	-6.89	4.94	963.9	999.2	43.4	892	4,497	0.467	
Hospitality Properties Trust	HPT	24.27	27.63	19.80	3.22	3.33	7.53	7.29	3.28	60.81	3.97	-0.17	-0.17	11.43	3.36	23.54	-0.66	7.42	2,994.4	2,994.4	40.2	583	14,403	0.481	
Host Hotels & Resorts Inc.	HST	14.68	17.25	10.17	1.07	1.26	13.69	11.61	17.87	35.71	8.44	-7.21	-7.21	0.22	-5.94	19.18	-4.63	1.91	10,557.1	10,711.3	30.8	7,938	120,859	1.145	
LaSalle Hotel Properties	LHO	26.26	30.12	15.72	2.11	2.45	12.46	10.73	16.14	68.75	8.34	-9.88	-9.88	9.67	7.27	22.39	-5.36	3.05	2,248.7	2,248.7	32.9	1,023	28,413	1.264	
MHI Hospitality Corp.	MDH	3.94	3.93	1.92	-	-	-	-	-	-	18.23	8.36	8.36	65.57	49.57	47.45	-15.65	2.03	39.4	51.2	77.9	14	52	0.131	
Pebblebrook Hotel Trust	PEB	22.72	24.11	14.12	1.23	1.54	18.50	14.80	25.00	133.33	7.68	-2.53	-2.53	19.71	17.79	-	-	2.11	1,192.4	1,200.9	18.4	410	9,312	0.781	
RLJ Lodging Trust	RLJ	17.60	19.15	11.78	1.69	1.97	10.45	8.96	16.62	-	7.05	-2.92	-2.92	6.49	6.27	-	-	3.75	1,871.3	1,887.0	40.1	370	6,512	0.348	
Strategic Hotels & Resorts Inc.	BEE	6.06	6.93	3.94	0.28	0.38	21.73	15.81	37.45	-	13.22	-6.19	-6.19	12.85	-10.88	72.51	-20.77	0.00	1,237.9	1,243.0	46.0	1,038	6,435	0.520	
Summit Hotel Properties Inc.	INN	8.30	10.09	6.70	0.78	0.98	10.60	8.50	24.68	75.00	6.41	-0.84	-0.84	-9.83	-22.39	-	-	5.42	253.5	337.3	49.4	95	769	0.303	
Sunstone Hotel Investors Inc.	SHO	10.01	10.99	5.07	1.01	1.19	9.90	8.42	17.59	0.00	9.13	-8.92	-8.92	22.82	12.35	21.65	-12.99	0.00	1,357.8	1,357.8	56.2	1,353	13,928	1.026	
Supertel Hospitality Inc.	SPPR	0.85	1.31	0.61	0.21	0.26	4.05	3.33	21.43	-	32.21	-5.26	-5.26	37.36	-23.73	-18.62	-33.34	0.00	19.4						

Mortgage

Name	Ticker	Share Price (\$)			FFO per Share		Price/FFO		FFO Growth (%)	FFO Payout (%)	Debt/EBITDA	Total Return (%)					Dividend Yield (%)	Equity Market Cap (\$M)	Implied Market Cap (\$M)	Debt Ratio (%)	Average Share Volume	Average Dollar Volume	Relative Liquidity	Long-Term Issuer Rating				
		52 Week			2012	2013	2012	2013				2012 - 2013	2012: Q1	2012: Q1	Jul-12	QTD									YTD	1-Yr	3-Yr	5-Yr
		High	Low																									
Home Financing																												
AG Mortgage Investment Trust Inc.	MITT	22.57	22.93	17.22	-	-	-	-	-	-	31.47	5.03	5.03	20.11	32.67	-	-	12.41	356.7	356.7	87.6	146	3,166	0.887				
American Capital Agency Corp.	AGNC	35.14	35.38	25.89	-	-	-	-	-	-	-	4.55	4.55	35.32	50.27	-	-	14.23	11,835.1	11,835.1	9.7	9,188	317,400	2.682				
American Capital Mortgage Investment Corp.	MTGE	24.55	24.83	15.70	-	-	-	-	-	-	-	2.96	2.96	40.93	-	-	-	11.41	890.2	890.2	37.0	612	14,987	1.584				
Analy Capital Management Inc.	NLY	17.43	18.35	15.48	-	-	-	-	-	-	-	17.52	3.87	3.87	16.79	19.08	16.88	18.81	12.62	16,890.9	16,890.9	21.7	9,038	154,319	0.914			
Anworth Mortgage Asset Corp.	ANH	6.64	7.35	6.03	-	-	-	-	-	-	-	38.14	-3.29	-3.29	12.14	8.63	9.76	10.66	10.84	911.0	911.0	4.1	1,653	11,148	1.224			
Apollo Residential Mortgage Inc.	AMTG	20.03	20.15	14.47	-	-	-	-	-	-	-	13.10	3.89	3.89	42.00	22.60	-	-	8.99	484.4	484.4	86.1	353	6,942	1.433			
Armour Residential REIT Inc.	ARR	7.66	7.75	5.91	-	-	-	-	-	-	-	9.22	9.22	20.56	27.10	-	-	15.67	1,794.1	1,794.1	91.0	9,822	72,710	4.053				
Capstead Mortgage Corp.	CMO	14.08	14.24	10.81	-	-	-	-	-	-	-	48.05	1.22	1.22	20.30	27.04	16.28	23.88	11.96	1,317.5	1,317.5	91.6	1,038	14,501	1.101			
Chimera Investment Corp.	CIM	2.16	3.25	2.13	-	-	-	-	-	-	-	-	-8.47	-8.47	-7.27	-17.72	-0.99	-	16.67	2,218.4	-	-	12,515	29,013	1.308			
CYS Investments Inc	CYS	14.46	14.46	11.36	1.89	2.02	7.66	7.15	7.19	-	-	26.52	5.01	5.01	18.46	37.01	21.22	-	13.93	2,322.3	2,322.3	87.0	4,160	58,720	2.528			
Dynex Capital Inc.	DX	10.39	10.53	7.51	-	-	7.66	-	-	-	-	16.56	2.92	2.92	20.54	28.76	19.28	16.15	11.16	564.6	564.6	5.9	500	5,108	0.905			
Hatteras Financial Corp.	HTS	29.25	29.48	23.81	-	-	-	-	-	-	-	37.04	2.27	2.27	18.12	24.79	16.91	-	12.31	2,860.0	2,860.0	0.0	931	27,101	0.948			
Invesco Mortgage Capital Inc.	IVR	19.79	19.85	13.32	-	-	-	-	-	-	-	7.91	7.91	51.29	19.05	17.13	-	13.14	2,283.6	2,311.8	0.0	1,283	24,385	1.068				
MFA Financial Inc.	MFA	8.08	8.13	6.25	0.86	0.91	9.35	8.86	5.57	-	-	17.46	5.42	5.42	27.82	23.90	17.01	16.72	11.39	2,876.9	2,876.9	37.2	3,422	27,191	0.945			
PennyMac Mortgage Investment Trust	PMT	21.07	22.10	15.14	-	-	-	-	-	-	-	6.79	6.79	34.45	48.18	11.36	-	10.44	867.5	867.5	61.6	373	7,679	0.885				
Redwood Trust Inc.	RWT	12.89	13.15	9.79	-	-	-	-	-	-	-	3.29	3.29	32.19	-1.79	-0.41	-6.06	7.76	1,012.5	1,012.5	40.3	421	5,392	0.533				
Two Harbors Investment Corp.	TWO	11.47	11.47	8.32	-	-	-	-	-	-	-	10.71	10.71	34.04	37.81	21.46	-	13.95	3,118.0	3,118.0	0.0	7,204	79,043	2.535				
Western Asset Mortgage Capital Corp	WMC	20.42	20.42	18.40	-	-	-	-	-	-	-	4.77	4.77	-	-	-	-	0.00	211.0	-	-	157	3,121	1.479				
AVERAGE		16.56	16.88	12.64	1.38	1.47	8.51	8.00	6.38	-	27.45	3.78	3.78	25.75	24.21	15.28	13.36	11.57	2,934.2	3,150.9	41.3	3,490	47,885	1.506				
Commercial Financing																												
Apollo Commercial Real Estate Finance Inc.	ARI	16.70	16.83	12.22	1.63	1.70	10.25	9.82	4.29	-	-	3.92	3.92	33.68	19.72	-	-	9.58	343.4	343.4	52.1	130	2,163	0.630				
Arbor Realty Trust Inc.	ABR	5.39	6.46	3.20	-	-	-	-	-	-	-	29.74	0.75	0.75	55.09	28.76	44.47	-18.68	1.39	149.6	149.6	90.7	44	235	0.157			
Ares Commercial Real Estate Corp.	ACRE	16.74	18.00	16.35	-	-	-	-	-	-	-	6.98	-4.23	-4.23	-6.68	-	-	-	0.36	154.6	-	-	47	795	0.515			
BRT Realty Trust	BRT	6.26	8.52	5.90	-	-	-	-	-	-	-	-3.85	-3.85	-1.42	-1.42	21.81	-13.05	0.00	87.7	87.7	58.4	4	25	0.028				
Capital Trust Inc. CI A	CT	2.93	4.15	1.96	-	-	-	-	-	-	-	1.74	1.74	30.22	-19.51	22.59	-34.80	0.00	64.7	64.7	8.9	42	120	0.186				
Colony Financial Inc.	CLNY	18.35	18.61	12.06	-	-	-	-	-	-	-	0.83	6.07	6.07	21.66	13.72	-	-	7.63	603.9	603.9	21.8	190	3,403	0.563			
Crexus Investment Corp.	CXS	10.48	11.35	8.30	-	-	-	-	-	-	-	0.54	3.05	3.05	6.40	12.17	-	-	10.31	803.0	803.0	2.4	332	3,421	0.426			
iStar Financial Inc.	SFI	6.72	7.62	5.09	-	-	-	-	-	-	-	29.69	4.19	4.19	27.03	-4.14	40.35	-25.80	0.00	566.9	566.9	90.4	550	3,698	0.652	B+		
Newcastle Investment Corp.	NCT	7.45	7.52	3.75	1.56	1.46	4.78	5.10	-6.41	-	-	7.91	11.19	11.19	70.48	40.91	136.61	-10.16	10.74	1,074.1	1,074.1	83.1	3,233	23,051	2.146			
Northstar Realty Finance Corp.	NRF	5.51	5.94	3.09	0.76	1.47	7.25	3.75	93.42	-	-	51.62	5.56	5.56	21.69	58.33	26.60	1.10	10.89	734.8	769.7	84.4	879	4,757	0.647			
PMC Commercial Trust	PCC	7.93	8.84	7.00	-	-	-	-	-	-	-	0.13	0.13	14.63	-2.15	14.57	-2.79	8.07	83.7	83.7	51.9	9	68	0.081				
RAIT Financial Trust	RAS	4.64	6.11	3.12	-	-	-	-	-	-	-	2.16	2.16	2.13	-11.14	11.87	-25.86	6.90	231.4	231.4	87.8	297	1,368	0.591				
Resource Capital Corp.	RSO	5.45	6.08	4.55	0.90	-	6.06	-	-	-	-	17.02	2.25	2.25	4.52	12.48	36.69	9.29	14.68	461.8	461.8	80.6	600	3,234	0.700			
Starwood Property Trust Inc.	STWD	22.26	22.62	16.40	1.85	1.80	12.04	12.40	-2.90	-	-	5.03	4.46	4.46	25.38	25.61	-	-	7.91	2,590.6	2,590.6	36.3	609	13,335	0.515			
AVERAGE		9.77	10.62	7.36	1.34	1.61	8.07	7.77	22.10	-	16.60	2.67	2.67	23.96	13.34	39.51	-13.42	6.32	567.9	602.3	57.6	498	4,262	0.560				

REIT Payout Ratios: Dividends as a Percent of FFO

1994: Q1 - 2011: Q4



Note: 1994-1999 quarters are based on partial data for the Top 100 Equity REITs.
 Source: NAREIT®, SNL Financial.

FTSE NAREIT All REITs
Summary of Dividends paid by Property Sector
June 29, 2012

Sector	Number of Companies	Implied Market Cap (\$M)	2012: Q2			2012: YTD		
			Total Dividends (\$M)	Funds From Operations (\$M)	Payout Ratio (%)	Total Dividends (\$M)	Funds From Operations (\$M)	Payout Ratio (%)
Industrial/Office	31	92,894	923.9	1,518.4	60.9	1,755.6	3,083.2	56.9
Office	19	59,140	561.9	971.1	57.9	1,137.1	2,095.7	54.3
Industrial	7	22,295	204.7	354.9	57.7	407.5	612.3	66.6
Mixed	5	11,459	157.4	192.4	81.8	211.0	375.2	56.2
Retail	34	152,712	1,244.1	1,747.0	71.2	2,584.1	3,799.0	68.0
Shopping Centers	20	42,655	451.0	599.6	75.2	956.3	1,285.1	74.4
Regional Malls	8	97,210	655.3	998.1	65.7	1,341.4	2,212.1	60.6
Free Standing	6	12,846	137.8	149.2	92.3	286.4	301.8	94.9
Residential	19	76,658	661.5	942.8	70.2	1,283.8	1,908.9	67.3
Apartments	16	72,247	621.7	855.7	72.7	1,198.2	1,748.5	68.5
Manufactured Homes	3	4,411	39.8	87.1	45.6	85.6	160.4	53.4
Diversified	16	39,682	523.4	763.0	68.6	1,034.7	1,392.4	74.3
Lodging/Resorts	17	29,903	224.1	287.8	77.8	564.0	956.5	59.0
Health Care	11	67,463	770.9	868.3	88.8	1,562.2	1,798.5	86.9
Self Storage	4	30,222	292.0	388.1	75.2	582.3	778.8	74.8
Timber	4	28,425	210.8	-	-	420.2	-	-
Infrastructure	2	28,638	0.3	343.2	0.1	83.3	529.1	15.8
Equity REITs	138	546,597	4,851.0	6,869.8	70.6	9,870.3	14,268.7	69.2
Commercial Financing	14	8,981	163.5	-	-	332.2	-	-
Home Financing	19	52,558	1,355.6	-	-	2,775.9	-	-
Mortgage REITs	33	61,539	1,519.1	-	-	3,108.0	-	-

Notes:

¹ Implied market cap is the sum of Operating Partnership units plus common shares outstanding, multiplied by share price.

Source: NAREIT®, SNL Financial.

REIT Industry Balance Sheet

Publicly Listed and Non-Listed Equity and Mortgage REITs

(As of December 31, 2011)

	Listed	Non-Listed	Total Industry	Listed	Non-Listed
				(Percent of total)	
Number of Firms	160	63	223	71.8	28.2
	(Billions of dollars at book value)			(Percent of total)	
Total Assets	539	96	635	84.9	15.1
Total Liabilities	307	52	359	85.5	14.5
Total Equity	232	44	276	84.1	15.9
Total Liabilities plus Shareholder Equity	539	96	635	84.9	15.1
<i>Memo: Net Property Investment</i>					
<i>Book Value</i>	481	63	544	88.4	11.6
<i>Estimated Market Value</i>	732	97	829	88.3	11.7

Source: SNL Financial, The Stanger Report

Summary of Financial Leverage by Property Sector 2012: Q2

(Publicly Traded Real Estate Investment Trusts)

Sector	Number of Companies	Implied Market Capitalization	Debt Ratio	Interest Coverage	Fixed Charge Coverage
Industrial/Office	31	92,743,982	43.0	2.96	2.65
Office	19	60,503,123	42.6	2.76	2.52
Industrial	7	20,871,015	44.5	3.55	3.25
Mixed	5	11,369,844	42.2	2.91	2.31
Retail	32	146,807,140	37.1	2.91	2.70
Shopping Centers	19	40,320,316	39.9	2.61	2.27
Regional Malls	8	95,264,698	36.7	3.04	2.95
Free Standing	5	11,222,125	28.9	3.21	2.70
Residential	19	80,378,428	33.7	2.99	2.84
Apartments	16	75,823,339	32.9	3.01	2.87
Manufactured Homes	3	4,555,089	44.8	2.84	2.59
Diversified	15	38,620,914	37.7	3.46	2.97
Lodging/Resorts	16	28,313,356	40.8	1.97	1.65
Health Care	11	62,714,713	31.8	3.51	3.27
Self Storage	4	30,806,424	10.8	9.96	4.25
Timber	4	25,227,294	25.7	3.20	3.20
Equity Totals	134	533,353,893	35.2	3.11	2.80
Commercial Financing	14	7,626,472	72.0	0.95	0.88
Home Financing	18	48,095,974	83.1	2.49	2.44
Mortgage Totals	32	55,722,446	82.2	2.11	2.04
Industry Totals	166	589,076,339	48.1	2.90	2.65

Notes:

¹ Implied market capitalization is the sum of Operating Partnership units plus common shares outstanding, multiplied by share price; data presented in thousands of dollars.

Source: NAREIT®, SNL Financial.

FTSE EPRA/NAREIT Global Real Estate Index Series Developed Markets

(Percent change, as of August 31, 2012)

(All values based in US dollars)

Period	Global			North America			Asia			Europe		
	Return Components			Return Components			Return Components			Return Components		
	Total	Price	Income	Total	Price	Income	Total	Price	Income	Total	Price	Income
Annual (including current year to date)												
2002	2.82	-2.38	5.20	2.42	-3.79	6.21	-7.15	-10.58	3.44	21.69	16.81	4.88
2003	40.69	33.47	7.23	37.70	29.65	8.05	44.83	38.47	6.36	44.68	38.72	5.96
2004	37.96	31.97	6.00	33.51	26.88	6.63	36.85	32.24	4.61	52.73	46.95	5.78
2005	15.35	10.67	4.69	13.21	8.09	5.12	23.37	18.63	4.73	9.43	6.03	3.39
2006	42.35	37.50	4.85	36.26	30.89	5.38	36.49	32.15	4.34	66.99	62.79	4.20
2007	-6.96	-9.98	3.02	-14.92	-18.25	3.33	14.80	11.67	3.13	-24.50	-26.63	2.13
2008	-47.72	-50.21	2.49	-40.63	-43.88	3.25	-52.48	-54.43	1.94	-51.13	-53.30	2.17
2009	38.26	31.75	6.51	32.22	25.18	7.04	43.43	37.82	5.61	40.45	33.00	7.45
2010	20.40	15.88	4.52	28.65	23.63	5.01	17.21	13.23	3.98	9.23	4.41	4.82
2011	-5.82	-9.40	3.59	8.19	4.11	4.08	-19.61	-22.56	2.94	-12.34	-16.01	3.67
2012	19.69	16.58	3.11	17.28	14.60	2.68	24.80	21.74	3.05	17.11	12.28	4.83
Quarter (including current quarter to date)												
2011: Q3	-17.30	-18.00	0.70	-14.59	-15.42	0.83	-18.08	-18.80	0.72	-23.27	-23.59	0.32
Q4	7.36	6.28	1.08	14.57	13.36	1.21	1.52	0.36	1.17	-2.56	-3.07	0.51
2012: Q1	12.90	11.94	0.96	10.64	9.66	0.99	16.51	15.54	0.97	12.81	11.98	0.84
Q2	2.12	0.80	1.31	3.59	2.64	0.95	1.48	0.40	1.08	-1.84	-4.97	3.12
Q3	3.82	3.32	0.50	2.33	1.82	0.50	5.54	4.94	0.60	5.76	5.51	0.25
Month												
2012: Mar	1.21	0.77	0.43	4.48	4.03	0.45	-4.66	-4.99	0.33	4.08	3.45	0.63
Apr	2.35	1.98	0.37	3.07	2.88	0.19	2.60	2.36	0.24	-0.87	-2.17	1.30
May	-6.34	-6.76	0.42	-4.66	-4.96	0.30	-8.72	-8.95	0.23	-7.21	-8.54	1.33
Jun	6.52	6.01	0.51	5.41	4.97	0.44	8.35	7.73	0.63	6.72	6.22	0.50
Jul	3.61	3.45	0.16	2.20	2.01	0.18	5.87	5.74	0.13	3.87	3.76	0.11
Aug	0.20	-0.13	0.33	0.13	-0.18	0.31	-0.31	-0.75	0.44	1.82	1.69	0.13
Historical (compound annual rates at month-end)												
1-Year	12.57	8.14		19.99	15.51		9.16	4.89		-2.18	-6.87	
3-Year	14.38	10.07		24.00	19.28		7.80	3.98		5.61	0.95	
5-Year	-1.38	-5.48		3.19	-1.42		-3.64	-7.20		-7.88	-12.17	
10-Year	11.13	6.49		11.54	6.36		11.75	7.67		9.43	5.06	
15-Year	7.17	2.54		9.60	3.95		4.76	1.07		7.92	3.77	
20-Year	9.84	5.14		12.95	6.54		7.79	4.18		8.66	4.42	

Source: FTSE™, EPRA®, NAREIT®.

Glossary of REITWatch terms:

REIT Name:	Full name of the company.
Ticker:	The company's stock exchange symbol.
Share Price (\$):	The closing price per share on the date noted.
52-Week Share Price (\$):	The high and low closing prices for the shares over the previous 52 weeks.
Price/FFO Multiples:	Price on the date indicated divided by the FactSet mean FFO estimate for the current and following year.
FFO per Share Estimates (\$):	FactSet mean FFO estimate for the current and following year.
FFO Growth (%):	The percentage change between the current and following year mean FFO estimate as reported by FactSet.
Debt/EBITDA Multiples	Average Total Debt over the prior 2 quarters divided by the the most recent quarter's annualized EBITDA.
FFO Payout (%):	Regular cash dividends paid on the company's primary issue of common stock as a percent of funds from operations, on a per-share basis.
Dividend Yield (%):	The current indicated dividend rate annualized and divided by the current stock price.
Dividend Spread (%):	The difference between the REIT dividend yield and the 10-year constant maturity treasury yield.
Total Returns (%):	Total returns are calculated by taking the closing price for the current period, adding any dividends with an ex-dividend date in that period then subtracting the closing price for the previous period and dividing the result by the closing price of the prior period.
Month:	The monthly total return as calculated at month-end.
Year to Date:	The total return for the calendar year through the latest month-end.
One Year:	The total return for the previous year.
Two Year:	The annualized total return for the previous 2 years.
Three Year:	The annualized total return for the previous 3 years.
Five Year:	The annualized total return for the previous 5 years.
Equity Market Capitalization (\$ Millions):	Price on the date indicated times the number of common shares outstanding.
Implied Market Capitalization (\$ Millions):	Price on the date indicated times the number of shares outstanding including Operating Partnership Units.
Debt Ratio (%):	A leverage ratio calculated by taking the REIT's total debt and dividing it by the total market capitalization. Total capitalization is the sum of implied market capitalization and total debt.
Long-Term Issuer Rating:	The long-term credit rating, as announced by Standard & Poors, and obtained from SNL Financial.
Average Share Volume:	The average number of shares traded daily over the past month, represented in thousands.
Average Daily Dollar Volume:	The average of the daily value of shares traded over the past month, represented in thousands. Daily value is computed by multiplying shares traded by the closing price on that date.
Relative Liquidity (%):	Average daily dollar volume divided by equity market capitalization.



National Association of Real Estate Investment Trusts®
REITs: Building Dividends & Diversification®

1875 I St, NW, Suite 600, Washington D.C. 20006
phone: 202-739-9400 • fax: 202-739-9401