

NAREIT®

June 2013

# REITWatch®

A Monthly Statistical Report on the Real Estate Investment Trust Industry



National Association of Real Estate Investment Trusts®

*REITs: Building Dividends & Diversification®*



## **NAREIT Disclaimer**

NAREIT® does not intend this publication to be a solicitation related to any particular company, nor does it intend to provide investment, legal or tax advice. Investors should consult with their own investment, legal or tax advisers regarding the appropriateness of investing in any of the securities or investment strategies discussed in this publication. Nothing herein should be construed to be an endorsement by NAREIT of any specific company or products or as an offer to sell or a solicitation to buy any security or other financial instrument or to participate in any trading strategy. NAREIT expressly disclaims any liability for the accuracy, timeliness or completeness of data in this publication. Unless otherwise indicated, all data are derived from, and apply only to, publicly traded securities. Any investment returns or performance data (past, hypothetical or otherwise) are not necessarily indicative of future returns or performance. Copyright 2013 by NAREIT®. NAREIT and REITWatch are the exclusive registered marks of the National Association of Real Estate Investment Trusts®. Please direct all questions or comments to John Barwick, Director, Industry Information & Statistics, NAREIT®, 1875 I Street, NW, Suite 600, Washington, DC 20006 or call (202) 739-9400.

# REITWATCH

## TABLE OF CONTENTS

---

### **I. Indicators of US REIT Investment Performance**

REIT Industry Fact Sheet .....	1
Investment Performance of the FTSE NAREIT US Real Estate Index Series .....	3
Investment Performance by Property Sector and Subsector .....	4
Selected Indicators of Equity Market Performance .....	5
Historical Offerings of REIT Securities .....	6
FTSE NAREIT Equity REITs Dividend Yield vs. 10-Year Constant Maturity Treasury .....	7
FTSE NAREIT Equity REITs Dividend Yield Spread .....	7
Major Stock Total Return Indexes .....	8
Average Daily Dollar Trading Volume .....	9
Comparative Total Return Investment Performance .....	10
Comparative Total Return Investment Correlations .....	11
20-Year Average Annual Total Returns .....	12
Adjusted 20-Year Average Annual Total Returns .....	12
20-Year Average Annual Total Return vs. 20-Year Standard Deviation of Annual Total Return ..	13
FTSE NAREIT All Equity REITs Return Components .....	14
S&P 500 Return Components .....	15
Wilshire 5000 Return Components .....	16
Annual Price and Total Returns by Investment Sector .....	17
Annual Price and Total Returns by Property Sector .....	18
Annual Price and Total Returns by Property Subsector .....	19
Annual Equity Market Capitalization .....	20
REITs in the FTSE NAREIT All REIT Index and S&P Equity Indexes .....	21
Mergers & Acquisitions Activity .....	26

### **II. US REIT Performance Statistics by Property Sector and Subsector**

Industrial/Office .....	28
• Office	
• Industrial	
• Mixed	
Retail .....	29
• Shopping Centers	
• Regional Malls	
• Free Standing	
Residential .....	30
• Apartments	
• Manufactured Homes	
Diversified .....	31
Health Care .....	31
Lodging/Resorts .....	31
Self Storage .....	31
Timber .....	31
Mortgage .....	32
• Home Financing	
• Commercial Financing	



**III. Indicators of US REIT Industry Activity**

REIT Payout Ratios: Dividend as a Percent of Funds from Operations ..... 33  
REIT Dividends and Funds from Operations by Property Sector/Subsector ..... 34  
US REIT Industry Balance Sheet ..... 35  
Summary of REIT Financial Leverage ..... 36

**IV. Indicators of Global Real Estate Investment Performance**

FTSE EPRA/NAREIT Global Real Estate Index Series Investment Performance ..... 37

**V. Glossary of REITWatch Terms**



This page intentionally left blank.

**REIT Industry Fact Sheet**

Data as of May 31, 2013, except where noted.

All data are derived from, and apply only to, publicly traded US REITs.

**Industry Size**

- FTSE NAREIT All REITs equity market capitalization = \$672 billion
- FTSE NAREIT All Equity REITs equity market capitalization = \$597 billion
- REITs own approximately \$850 billion of commercial real estate assets, including listed and non-listed REITs
- 187 REITs are in the FTSE NAREIT All REITs Index
- 168 REITs trade on the New York Stock Exchange
- NYSE listed REITs equity market capitalization = \$655 billion

**Investment Performance**

Year-to-date and compound annual total returns of the FTSE NAREIT All REITs Index, the FTSE NAREIT All Equity REITs Index, and leading US benchmarks for periods ending May 31, 2013:

	FTSE NAREIT		S&P 500	Russell 2000	NASDAQ Composite <sup>1</sup>	Dow Jones Industrial Average <sup>1</sup>
	All REITs	All Equity REITs				
2013: YTD	7.87	8.16	15.37	<b>16.45</b>	14.45	15.35
1-Year	18.88	19.39	27.28	<b>31.07</b>	24.45	24.45
3-Year	17.06	<b>17.30</b>	16.87	15.72	15.26	14.25
5-Year	5.88	5.74	5.43	<b>7.15</b>	6.50	3.64
10-Year	10.56	<b>11.45</b>	7.58	9.78	8.03	5.50
15-Year	9.16	<b>9.78</b>	4.61	6.65	4.53	3.59
20-Year	10.38	<b>10.84</b>	8.75	8.94	8.31	7.55
25-Year	9.68	<b>10.92</b>	10.01	9.66	9.34	8.36
30-Year	9.47	<b>11.45</b>	10.73	9.01	8.38	8.81
35-Year	11.30	<b>13.03</b>	11.59	-	10.07	8.61
40-Year	10.23	<b>12.69</b>	10.46	-	9.19	7.30
1972 - 2013	9.80	<b>12.19</b>	10.26	-	8.46	7.08

Data in percent; highest return for the period in bold.

<sup>1</sup> Price only returns.

**Dividends**

**Yield Comparison**

- FTSE NAREIT All REITs: 4.21%
- FTSE NAREIT All Equity REITs: 3.37%
- S&P 500: 2.14%

- REITs paid out approximately \$29 billion in dividends in 2012.
- On average, 68 percent of the annual dividends paid by REITs qualify as ordinary taxable income, 13 percent qualify as return of capital and 19 percent qualify as long-term capital gains.

## REIT Industry Fact Sheet

Data as of May 31, 2013, except where noted.

All data are derived from, and apply only to, publicly traded US REITs.

### Leverage and Coverage Ratios

(Data as of 2012: Q4)

#### Equity REITs

- Debt Ratio: 33.3%
- Coverage Ratio: 3.2x
- Fixed Charge Ratio: 2.9x
- 46 Equity REITs are rated investment grade, 68 percent by equity market capitalization.

#### All REITs

- Debt Ratio: 49.3%
- Coverage Ratio: 2.9x
- Fixed Charge Ratio: 2.6x
- 46 REITs are rated investment grade, 62 percent by equity market capitalization.

---

- Debt ratio equals total debt divided by total market capitalization. Total market capitalization is the sum of total debt and implied equity market capitalization (common shares plus operating partnership units).

- Coverage ratio equals EBITDA divided by interest expense.

- Fixed charge ratio equals EBITDA divided by interest expense plus preferred dividends.

### Average Daily Dollar Trading Volume

- May 2013: \$4.9 billion
- May 2008: \$3.0 billion
- May 2003: \$860 million

### Capital Offerings

- REITs have raised \$40.5 billion in initial, debt and equity capital offerings in 2013. \$26.8 billion was raised in secondary equity common and preferred share offerings, \$11.8 billion was raised in unsecured debt offerings, and \$1.8 billion was raised in initial public offerings.



**Exhibit 1**  
**Investment Performance:**  
**FTSE NAREIT US Real Estate Index Series**

May 31, 2013

Period	FTSE NAREIT All REITs			FTSE NAREIT Composite			FTSE NAREIT Real Estate 50™ <sup>1</sup>			FTSE NAREIT All Equity REITs			FTSE NAREIT Equity REITs			FTSE NAREIT Mortgage REITs		
	Returns (%)		Dividend	Returns (%)		Dividend	Returns (%)		Dividend	Returns (%)		Dividend	Returns (%)		Dividend	Returns (%)		Dividend
	Total	Price	Yield <sup>2</sup>	Total	Price	Yield <sup>2</sup>	Total	Price	Yield <sup>2</sup>	Total	Price	Yield <sup>2</sup>	Total	Price	Yield <sup>2</sup>	Total	Price	Yield <sup>2</sup>
<b>Annual (including current year to date)</b>																		
2008	-37.34	-41.04	8.37	-37.84	-41.56	8.32	-37.31	-40.78	7.22	-37.73	-41.12	7.56	-37.73	-41.12	7.56	-31.31	-40.46	14.47
2009	27.45	19.90	4.63	27.80	20.15	4.69	27.62	20.36	4.48	27.99	21.28	3.73	27.99	21.28	3.73	24.63	8.26	14.86
2010	27.58	21.81	4.23	27.56	21.76	4.31	26.72	21.13	4.09	27.95	23.07	3.54	27.96	23.06	3.58	22.60	7.01	13.03
2011	7.28	2.37	4.83	7.30	2.34	4.90	9.45	4.69	4.60	8.28	4.32	3.82	8.29	4.32	3.83	-2.42	-15.14	14.82
2012	20.14	14.98	4.38	19.73	14.54	4.46	18.05	13.37	4.09	19.70	15.61	3.51	18.06	13.86	3.70	19.89	5.83	12.93
2013	7.87	6.36	4.21	7.70	6.17	4.27	6.47	5.05	3.96	8.16	6.84	3.37	8.58	7.19	3.51	3.83	0.76	12.43
<b>Quarter (including current quarter to date)</b>																		
2012: Q1	10.41	9.30	4.29	10.36	9.23	4.36	9.82	8.79	4.01	10.49	9.59	3.34	10.79	9.84	3.54	9.08	5.83	13.82
Q2	4.55	3.37	4.20	4.45	3.28	4.27	4.50	3.42	3.91	4.00	3.09	3.29	3.71	2.79	3.46	8.53	5.02	12.92
Q3	1.85	0.77	4.25	1.79	0.70	4.32	1.17	0.19	3.94	1.03	0.19	3.35	0.16	-0.71	3.53	8.22	5.09	11.95
Q4	2.19	1.00	4.38	2.03	0.83	4.46	1.67	0.58	4.09	3.11	2.14	3.51	2.58	1.57	3.70	-6.42	-9.40	12.93
2013: Q1	9.11	8.04	4.11	9.10	8.00	4.16	7.28	6.27	3.88	8.10	7.23	3.31	8.19	7.26	3.49	17.84	14.75	10.89
Q2	-1.14	-1.55	4.21	-1.29	-1.70	4.27	-0.75	-1.15	3.96	0.06	-0.36	3.37	0.36	-0.06	3.51	-11.89	-12.19	12.43
<b>Month</b>																		
2012: Dec	3.20	2.44	4.38	3.11	2.35	4.46	3.08	2.42	4.09	3.65	3.15	3.51	3.75	3.22	3.70	-1.33	-4.19	12.93
2013: Jan	4.28	4.12	4.22	4.29	4.12	4.31	3.40	3.25	3.99	3.66	3.47	3.42	3.74	3.53	3.60	9.87	9.72	11.66
Feb	1.29	1.09	4.21	1.29	1.08	4.30	0.92	0.69	3.99	1.24	1.03	3.41	1.26	1.05	3.59	1.65	1.48	11.49
Mar	3.29	2.64	4.11	3.28	2.63	4.16	2.80	2.22	3.88	3.01	2.58	3.31	2.99	2.52	3.49	5.51	3.06	10.89
Apr	5.80	5.63	3.92	5.71	5.55	3.96	6.47	6.34	3.67	6.33	6.17	3.13	6.68	6.52	3.28	0.83	0.62	10.79
May	-6.56	-6.79	4.21	-6.62	-6.86	4.27	-6.79	-7.04	3.96	-5.90	-6.15	3.37	-5.93	-6.18	3.51	-12.61	-12.74	12.43
<b>Week (including current week to date)</b>																		
26-Apr-13	0.43	0.40	3.99	0.40	0.36	4.03	0.26	0.23	3.74	0.24	0.20	3.19	0.00	-0.05	3.35	1.72	1.72	10.97
3-May-13	1.68	1.61	3.92	1.61	1.53	3.97	1.56	1.47	3.68	2.02	1.94	3.13	2.28	2.18	3.28	-1.83	-1.83	11.18
10-May-13	0.77	0.72	3.90	0.75	0.70	3.95	0.67	0.60	3.67	0.81	0.75	3.12	0.80	0.75	3.25	0.29	0.24	11.16
17-May-13	1.71	1.61	3.85	1.70	1.60	3.91	1.80	1.70	3.62	1.96	1.85	3.08	1.88	1.78	3.21	-0.47	-0.56	11.22
24-May-13	-3.74	-3.75	3.99	-3.74	-3.76	4.05	-3.63	-3.63	3.75	-3.65	-3.66	3.20	-3.72	-3.73	3.34	-4.56	-4.56	11.81
31-May-13	-5.16	-5.17	4.21	-5.16	-5.17	4.27	-5.41	-5.43	3.96	-5.17	-5.19	3.37	-5.12	-5.14	3.51	-5.01	-5.01	12.43
<b>Historical (compound annual rates at month-end)</b>																		
1-Year	18.88	13.83		18.32	13.27		15.79	11.26		19.39	15.37		17.82	13.67		9.59	-2.86	
3-Year	17.06	11.92		16.90	11.72		16.62	11.80		17.30	13.15		16.92	12.70		13.38	-0.65	
5-Year	5.88	0.63		443.63	177.84		5.27	0.32		5.74	1.29		5.53	1.05		7.50	-6.17	
10-Year	10.56	4.98		133.16	66.68		11.56	6.42		11.45	6.43		11.34	6.30		0.32	-10.88	
15-Year	9.16	2.81		75.83	40.58		-	-		9.78	3.87		9.71	3.79		3.30	-8.58	
20-Year	10.38	3.67		52.70	29.11		-	-		10.84	4.60		10.79	4.53		6.30	-5.61	
25-Year	9.68	2.15		40.30	22.68		-	-		10.92	4.03		10.88	3.98		4.81	-7.20	
30-Year	9.47	1.58		32.60	18.57		-	-		11.45	4.23		11.42	4.19		4.30	-7.51	
35-Year	11.30	2.87		27.36	15.72		-	-		13.03	5.14		13.00	5.10		6.24	-5.75	
40-Year	10.23	1.62		23.57	13.62		-	-		12.69	4.65		12.67	4.62		5.44	-6.40	

Source: FTSE™, NAREIT®.

Notes:

<sup>1</sup> The FTSE NAREIT Real Estate 50™ is designed to measure the performance of larger and more frequently traded REITs.

<sup>2</sup> Dividend yield quoted in percent for the period end.

Disclaimer: The FTSE NAREIT US Real Estate Index Series ("Indexes") is calculated by FTSE International Limited ("FTSE"). All rights in the Indexes vest in FTSE® and the National Association of Real Estate Investment Trusts® ("NAREIT"). FTSE is a trademark of the London Stock Exchange Plc and The Financial Times Limited and is used by FTSE under licence. NAREIT® is a trademark of the National Association of Real Estate Investment Trusts. Neither FTSE nor NAREIT nor their licensors shall be liable (including in negligence) for any loss arising out of use of the Indexes by any person. All data are derived from, and apply only to, publicly traded securities.

## Exhibit 2 Investment Performance by Property Sector and Subsector

May 31, 2013

Sector	Number of Constituents	Total Return (%)			Dividend Yield (%)	Market Capitalization (\$)¹	
		2012	May	2013: YTD		Equity	Implied
FTSE NAREIT All Equity REITs	133	19.70	-5.90	8.16	3.37	597,222,164	623,324,035
FTSE NAREIT Equity REITs	128	18.06	-5.93	8.58	3.51	533,826,624	559,928,496
Industrial/Office	30	19.12	-5.00	10.02	3.35	99,233,785	104,463,056
Industrial	7	31.28	-4.19	12.37	2.90	25,551,883	26,078,166
Office	18	14.15	-5.22	7.51	3.35	60,713,964	64,597,552
Mixed	5	20.81	-5.65	17.88	4.21	12,967,938	13,787,338
Retail	31	26.74	-6.74	9.43	3.22	153,944,485	167,139,094
Shopping Centers	18	25.02	-6.65	11.53	3.53	47,159,316	47,887,170
Regional Malls	8	28.21	-6.37	7.11	2.85	91,880,027	104,335,197
Free Standing	5	22.46	-9.21	16.90	4.52	14,905,142	14,916,728
Residential	18	6.94	-2.51	2.15	3.32	86,089,154	89,237,550
Apartments	15	6.93	-2.41	1.28	3.31	80,932,299	83,677,114
Manufactured Homes	3	7.10	-4.00	18.38	3.60	5,156,855	5,560,437
Diversified	19	12.20	-6.94	5.93	4.32	46,076,356	49,364,760
Lodging/Resorts	15	12.53	-2.50	14.57	2.86	36,230,059	36,788,125
Health Care	11	20.35	-9.26	12.30	4.48	77,834,552	78,272,018
Self Storage	4	19.94	-7.47	7.22	3.11	34,418,234	34,663,892
Timber	4	37.05	-4.11	8.95	3.03	32,521,814	32,521,814
Infrastructure	1	29.91	-7.32	1.08	1.34	30,873,726	30,873,726
FTSE NAREIT Mortgage REITs	29	19.89	-12.61	3.83	12.43	63,881,627	63,960,801
Home Financing	18	16.38	-14.68	0.14	13.87	50,286,571	50,313,147
Commercial Financing	11	42.98	-4.46	19.80	7.12	13,595,056	13,647,654

Source: FTSE<sup>1M</sup>, NAREIT®.

Notes:

<sup>1</sup> Implied market capitalization is calculated as common shares outstanding plus operating partnership units, multiplied by share price. Data

## Exhibit 3 Selected Indicators of Equity Market Performance

(Period ending index levels and percent change)

May 31, 2013

Period	FTSE NAREIT All Equity REITs		S&P 500		Dow Jones Industrials <sup>1</sup>		Russell 2000		NASDAQ Composite <sup>1</sup>		US Treasury 10-Year Note <sup>2</sup>	
	Levels	Returns	Levels	Returns	Levels	Returns	Levels	Returns	Levels	Returns	Yield	Change
<b>Annual (including current year to date)</b>												
2003	4,871.12	37.13	1,622.94	28.68	10,453.92	25.32	2,273.20	47.25	2,003.37	50.01	4.27	0.44
2004	6,409.30	31.58	1,799.55	10.88	10,783.01	3.15	2,689.86	18.33	2,175.44	8.59	4.24	-0.03
2005	7,188.85	12.16	1,887.94	4.91	10,717.50	-0.61	2,812.35	4.55	2,205.32	1.37	4.39	0.15
2006	9,709.31	35.06	2,186.13	15.79	12,463.15	16.29	3,328.90	18.37	2,415.29	9.52	4.71	0.32
2007	8,185.75	-15.69	2,306.23	5.49	13,264.82	6.43	3,276.77	-1.57	2,652.28	9.81	4.04	-0.67
2008	5,097.46	-37.73	1,452.98	-37.00	8,776.39	-33.84	2,169.65	-33.79	1,577.03	-40.54	2.25	-1.79
2009	6,524.25	27.99	1,837.50	26.46	10,428.05	18.82	2,759.17	27.17	2,269.15	43.89	3.85	1.60
2010	8,347.58	27.95	2,114.29	15.06	11,577.51	11.02	3,500.15	26.85	2,652.87	16.91	3.30	-0.55
2011	9,039.07	8.28	2,158.94	2.11	12,217.56	5.53	3,353.99	-4.18	2,605.15	-1.80	1.89	-1.41
2012	10,819.84	19.70	2,504.44	16.00	13,104.14	7.26	3,902.37	16.35	3,019.51	15.91	1.78	-0.11
2013	11,702.91	8.16	2,889.46	15.37	15,115.57	15.35	4,544.48	16.45	3,455.91	14.45	2.16	0.38
<b>Quarter (including current quarter to date)</b>												
2011: Q3	7,842.64	-15.07	1,930.79	-13.87	10,913.38	-12.09	2,904.55	-21.87	2,415.40	-12.91	1.92	-1.26
Q4	9,039.07	15.26	2,158.94	11.82	12,217.56	11.95	3,353.99	15.47	2,605.15	7.86	1.89	-0.03
2012: Q1	9,987.37	10.49	2,430.67	12.59	13,212.04	8.14	3,771.11	12.44	3,091.57	18.67	2.23	0.34
Q2	10,386.82	4.00	2,363.79	-2.75	12,880.09	-2.51	3,640.11	-3.47	2,935.05	-5.06	1.67	-0.56
Q3	10,493.88	1.03	2,513.93	6.35	13,437.13	4.32	3,831.33	5.25	3,116.23	6.17	1.65	-0.02
Q4	10,819.84	3.11	2,504.44	-0.38	13,104.14	-2.48	3,902.37	1.85	3,019.51	-3.10	1.78	0.13
2013: Q1	11,696.24	8.10	2,770.05	10.61	14,578.54	11.25	4,385.95	12.39	3,267.52	8.21	1.87	0.09
Q2	11,702.91	0.06	2,889.46	4.31	15,115.57	3.68	4,544.48	3.61	3,455.91	5.77	2.16	0.29
<b>Month</b>												
2012: May	9,802.04	-4.41	2,270.25	-6.01	12,393.45	-6.21	3,467.10	-6.62	2,827.34	-7.19	1.59	-0.36
Jun	10,386.82	5.97	2,363.79	4.12	12,880.09	3.93	3,640.11	4.99	2,935.05	3.81	1.67	0.08
Jul	10,612.21	2.17	2,396.62	1.39	13,008.68	1.00	3,589.81	-1.38	2,939.52	0.15	1.51	-0.16
Aug	10,624.91	0.12	2,450.60	2.25	13,090.84	0.63	3,709.52	3.33	3,066.96	4.34	1.57	0.06
Sep	10,493.88	-1.23	2,513.93	2.58	13,437.13	2.65	3,831.33	3.28	3,116.23	1.61	1.65	0.08
Oct	10,467.52	-0.25	2,467.51	-1.85	13,096.46	-2.54	3,748.21	-2.17	2,977.23	-4.46	1.72	0.07
Nov	10,439.07	-0.27	2,481.82	0.58	13,025.58	-0.54	3,768.13	0.53	3,010.24	1.11	1.62	-0.10
Dec	10,819.84	3.65	2,504.44	0.91	13,104.14	0.60	3,902.37	3.56	3,019.51	0.31	1.78	0.16
2013: Jan	11,215.56	3.66	2,634.16	5.18	13,860.58	5.77	4,146.63	6.26	3,142.13	4.06	2.02	0.24
Feb	11,354.74	1.24	2,669.92	1.36	14,054.49	1.40	4,192.37	1.10	3,160.19	0.57	1.89	-0.13
Mar	11,696.24	3.01	2,770.05	3.75	14,578.54	3.73	4,385.95	4.62	3,267.52	3.40	1.87	-0.02
Apr	12,436.69	6.33	2,823.42	1.93	14,839.80	1.79	4,369.83	-0.37	3,328.79	1.88	1.70	-0.17
May	11,702.91	-5.90	2,889.46	2.34	15,115.57	1.86	4,544.48	4.00	3,455.91	3.82	2.16	0.46
<b>Historical (compound annual rates)</b>												
1-Year		19.39		27.28		21.96		31.07		22.23		
3-Year		17.30		16.87		14.25		15.72		15.26		
5-Year		5.74		5.43		3.64		7.15		6.50		
10-Year		11.45		7.58		5.50		9.78		8.03		
15-Year		9.78		4.61		3.59		6.65		4.53		
20-Year		10.84		8.75		7.55		8.94		8.31		
25-Year		10.92		10.01		8.36		9.66		9.34		
30-Year		11.45		10.73		8.81		9.01		8.38		
35-Year		13.03		11.59		8.61		-		10.07		
40-Year		12.69		10.46		7.30		-		9.19		

Source: NAREIT®, FactSet.

<sup>1</sup> Price-only returns

<sup>2</sup> Ten-year constant maturity Treasury note

## Exhibit 4 Historical Offerings of Securities

May 31, 2013

Period	Total		Initial Public Offering		Secondary Equity				Secondary Debt			
	Number	Capital Raised <sup>1</sup>	Number	Capital Raised <sup>1</sup>	Common Shares		Preferred Shares		Unsecured Debt		Secured Debt	
					Number	Capital Raised <sup>1</sup>	Number	Capital Raised <sup>1</sup>	Number	Capital Raised <sup>1</sup>	Number	Capital Raised <sup>1</sup>
<b>Annual Totals (including current year to date)</b>												
2005	259	37,492	11	3,789	71	8,521	36	3,095	105	16,330	36	5,758
2006	204	49,018	5	2,271	75	15,695	39	4,239	82	25,261	3	1,551
2007	129	36,031	4	1,820	56	11,854	26	4,202	43	18,155	0	0
2008	82	17,991	2	491	60	11,132	9	1,195	11	5,173	0	0
2009	130	34,656	9	2,990	87	21,244	0	0	34	10,422	0	0
2010	173	47,450	9	1,975	91	23,629	17	2,617	56	19,230	0	0
2011	164	51,280	8	2,307	92	31,075	31	4,108	33	13,790	0	0
2012	254	73,326	8	1,822	106	35,143	71	10,631	69	25,730	0	0
2013	134	40,483	10	1,834	66	23,137	23	3,703	35	11,809	0	0
<b>Quarterly Totals</b>												
2012: Q1	65	21,206	1	198	28	10,634	23	4,049	13	6,325	0	0
Q2	52	12,296	3	616	25	5,617	13	1,537	11	4,525	0	0
Q3	76	20,791	2	559	31	11,001	26	4,120	17	5,111	0	0
Q4	61	19,033	2	449	22	7,890	9	925	28	9,769	0	0
2013: Q1	77	22,550	6	970	40	12,567	15	2,519	16	6,494	0	0
Q2	57	17,933	4	864	26	10,570	8	1,183	19	5,315	0	0
<b>Monthly Totals</b>												
2011: Aug	5	1,634	1	184	2	1,175	1	25	1	250	0	0
September	7	1,438	0	0	4	1,008	3	430	0	0	0	0
October	8	2,001	0	0	4	1,760	4	242	0	0	0	0
November	14	4,434	0	0	8	1,638	1	46	5	2,750	0	0
December	4	1,444	0	0	2	144	0	0	2	1,300	0	0
2012: Jan	21	5,546	0	0	11	3,051	8	1,645	2	850	0	0
February	17	5,146	0	0	7	2,498	6	973	4	1,675	0	0
March	27	10,514	1	198	10	5,085	9	1,431	7	3,800	0	0
April	14	2,900	2	456	4	1,092	5	352	3	1,000	0	0
May	21	5,420	1	160	12	2,515	5	719	3	2,025	0	0
June	17	3,976	0	0	9	2,010	3	466	5	1,500	0	0
July	28	7,408	1	59	8	4,257	13	1,642	6	1,450	0	0
August	26	6,248	0	0	13	2,952	6	985	7	2,311	0	0
September	22	7,135	1	500	10	3,792	7	1,493	4	1,350	0	0
October	22	5,238	1	167	12	3,155	5	516	4	1,400	0	0
November	16	7,842	0	0	3	3,567	1	75	12	4,200	0	0
December	23	5,952	1	282	7	1,168	3	334	12	4,169	0	0
2013: Jan	20	5,980	2	418	11	2,695	4	923	3	1,944	0	0
February	20	6,856	2	179	12	5,332	4	520	2	825	0	0
March	37	9,714	2	373	17	4,540	7	1,076	11	3,725	0	0
April	23	6,589	1	167	10	3,321	6	976	6	2,125	0	0
May	34	11,344	3	698	16	7,249	2	207	13	3,190	0	0

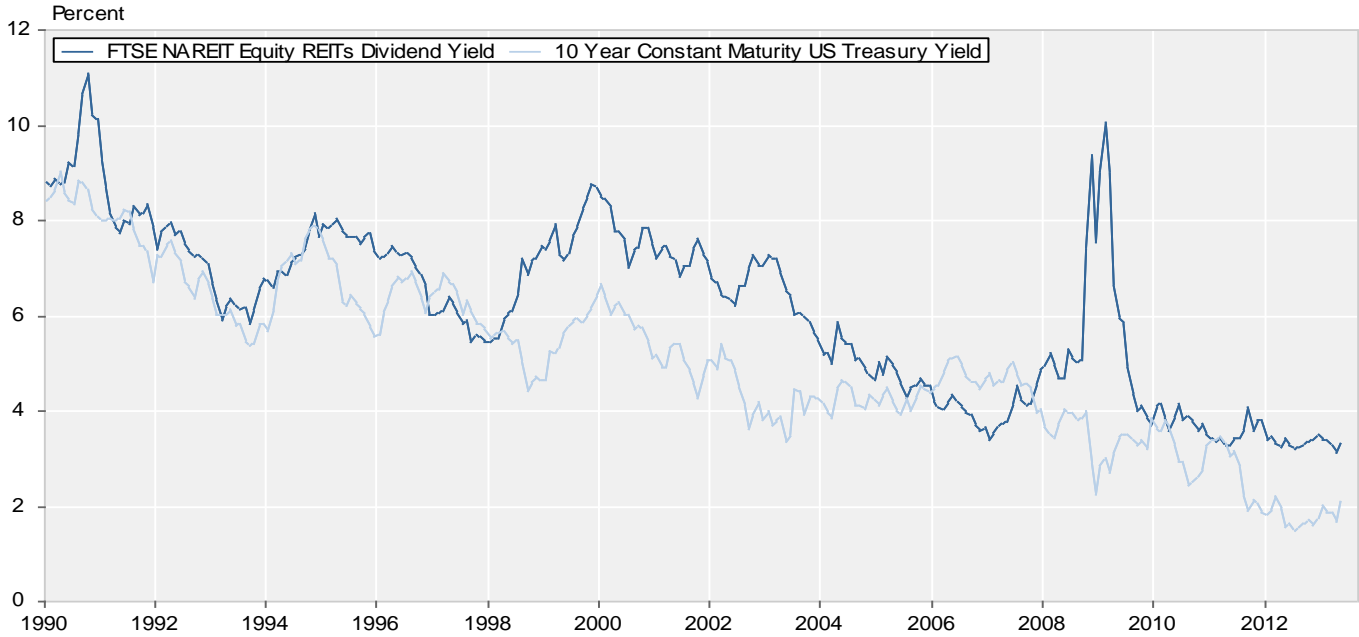
Source: SNL Financial, NAREIT®.

Notes:

<sup>1</sup> Data presented in millions of dollars.

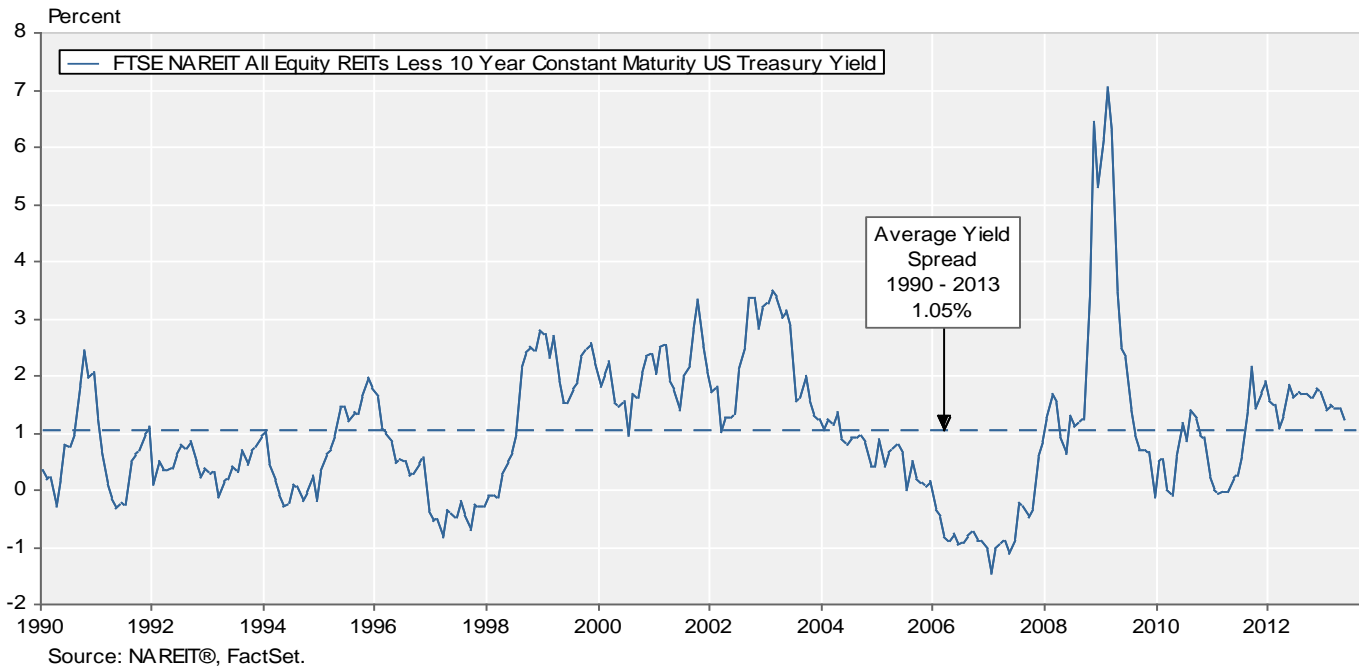
**Exhibit 5:**  
**Equity REIT Dividend Yield vs. 10-Year Constant Maturity Treasury Yield**

January 1990 - May 2013



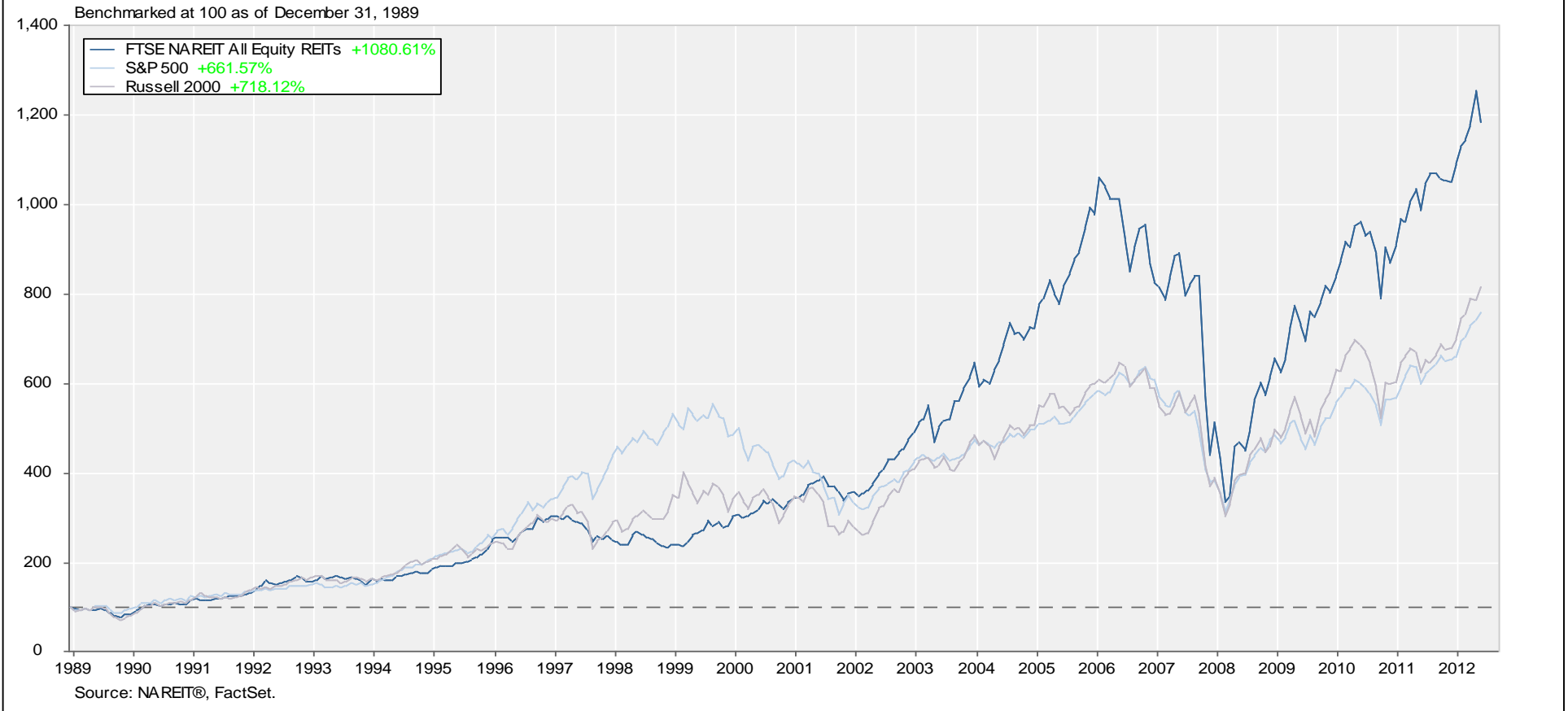
**Exhibit 6:**  
**Monthly Equity REIT Dividend Yield Spread**

January 1990 - May 2013



## Total Return Index Comparison

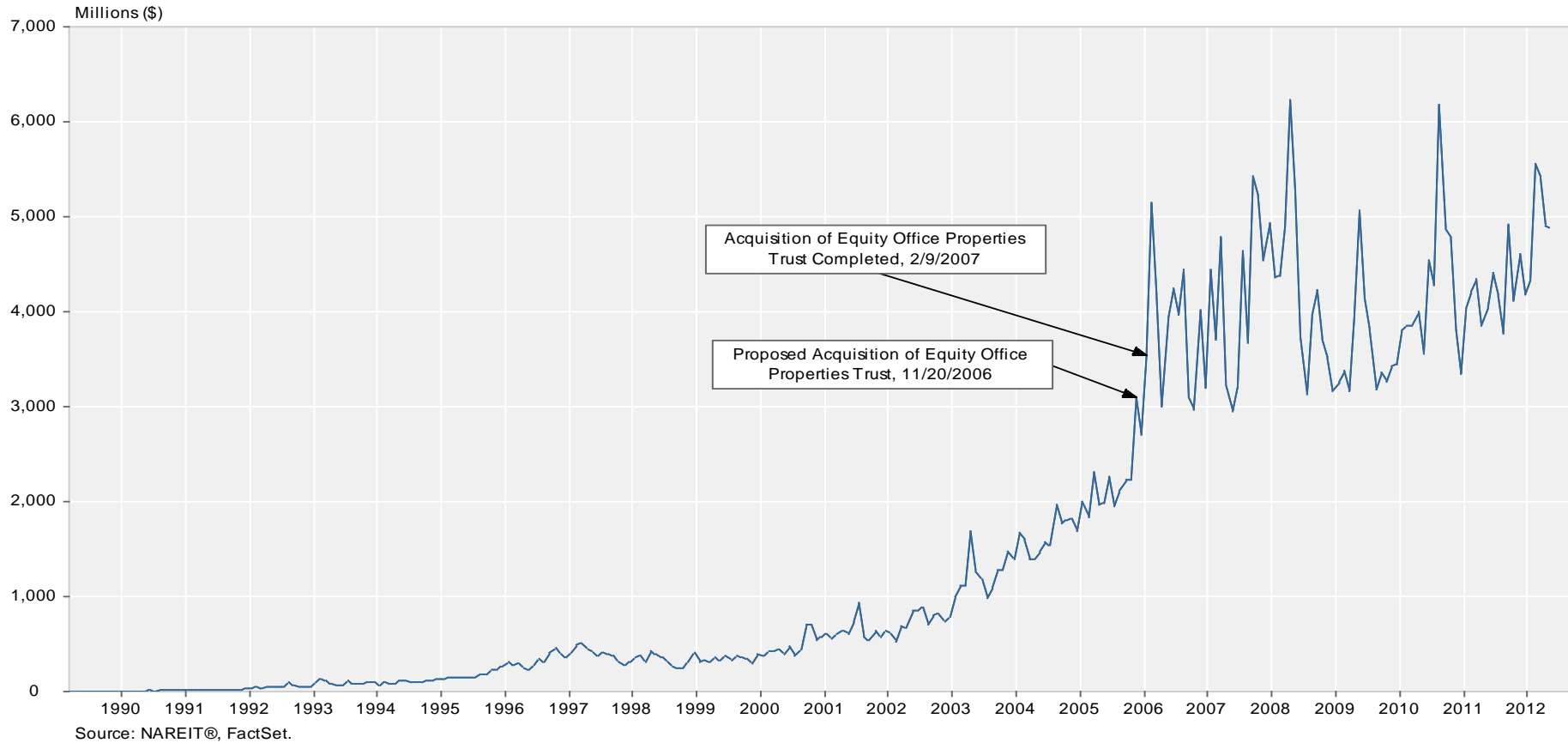
Monthly Returns  
 December 1989 - May 2013



### Average Daily Dollar Trading Volume

FTSE NAREIT All REITs

March 1990 - May 2013



**Comparative Total Return Investment Performance**

May 31, 2013

(Data in percent)

Period	FTSE NAREIT		Dow Jones		NASDAQ <sup>1</sup>		Standard & Poor's				Russell 2000			Bond Indexes		NCREIF	
	Equity	Industrials <sup>1</sup>	US Total		Composite	100	Citigroup 500 Value	500	Citigroup 500 Growth	Utilities	Value	2000	Growth	ML Corp/Govt	ML Mortgage	Hi Yield Corp	NPI
	(Jan. 1972)	(Dec. 1926)	Stock Market	(Jan. 1972)													
<b>Annual Returns (including current year to date)</b>																	
2003	37.13	25.32	31.67	50.01	49.12	31.79	28.68	25.66	26.26	46.03	47.25	48.54	4.54	3.29	28.97	14.49	
2004	31.58	3.15	12.46	8.59	10.44	15.71	10.88	6.13	24.28	22.25	18.33	14.31	4.15	4.74	11.13	20.06	
2005	12.16	-0.61	6.38	1.37	1.49	5.82	4.91	4.00	16.84	4.71	4.55	4.15	2.52	2.62	2.74	16.60	
2006	35.06	16.29	15.77	9.52	6.79	20.80	15.79	11.01	20.99	23.48	18.37	13.35	3.83	5.32	11.85	15.85	
2007	-15.69	6.43	5.62	9.81	18.67	1.99	5.49	9.13	19.38	-9.78	-1.57	7.05	7.27	6.96	1.87	-6.46	
2008	-37.73	-33.84	-37.23	-40.54	-41.89	-39.22	-37.00	-34.92	-28.98	-28.92	-33.79	-38.54	4.95	8.30	-26.16	-16.85	
2009	27.99	18.82	28.57	43.89	53.54	21.18	26.46	31.57	11.91	20.58	27.17	34.47	4.84	5.76	58.21	13.11	
2010	27.95	11.02	17.49	16.91	19.22	15.10	15.06	15.05	5.46	24.50	26.85	29.09	6.83	5.67	15.12	14.26	
2011	8.28	5.53	1.08	-1.80	2.70	-0.48	2.11	4.65	19.91	-5.50	-4.18	-2.91	8.61	6.14	4.98	7.81	
2012	19.70	7.26	16.38	15.91	16.82	17.68	16.00	14.61	1.29	18.05	16.35	14.59	5.09	2.59	15.81	10.55	
2013	8.16	15.35	15.64	14.45	12.06	16.81	15.37	14.03	8.89	14.85	16.45	18.17	-0.98	-1.10	4.15	-	
<b>Quarterly Returns</b>																	
2011: Q4	15.26	11.95	12.12	7.86	6.48	12.98	11.82	10.81	8.28	15.97	15.47	14.99	1.16	0.85	6.46	2.96	
2012: Q1	10.49	8.14	12.90	18.67	20.96	12.97	12.59	12.27	-1.62	11.59	12.44	13.28	0.17	0.60	5.34	2.59	
Q2	4.00	-2.51	-3.10	-5.06	-5.06	-3.58	-2.75	-2.05	6.55	-3.01	-3.47	-3.94	2.62	1.11	1.83	2.68	
Q3	1.03	4.32	6.18	6.17	7.01	6.30	6.35	6.40	-0.53	5.67	5.25	4.84	1.80	1.13	4.53	2.34	
Q4	3.11	-2.48	0.19	-3.10	-4.94	1.64	-0.38	-2.04	-2.86	3.22	1.85	0.45	0.42	-0.27	3.29	2.54	
2013: Q1	8.10	11.25	11.06	8.21	5.93	11.97	10.61	9.33	13.02	11.63	12.39	13.21	-0.16	-0.07	2.89	2.57	
Q2	0.06	3.68	4.12	5.77	5.79	4.32	4.31	4.30	-3.66	2.89	3.61	4.39	-0.83	-1.04	1.22	-	
<b>Monthly Returns</b>																	
2012: Dec	3.65	0.60	1.22	0.31	-0.63	2.17	0.91	-0.14	0.05	4.21	3.56	2.88	-0.29	0.14	1.58	-	
2013: Jan	3.66	5.77	5.52	4.06	2.65	6.50	5.18	3.95	4.87	5.96	6.26	6.58	-0.83	-0.52	1.34	-	
Feb	1.24	1.40	1.28	0.57	0.26	1.36	1.36	1.36	2.23	1.14	1.10	1.06	0.60	0.35	0.51	-	
Mar	3.01	3.73	3.93	3.40	2.93	3.73	3.75	3.77	5.42	4.16	4.62	5.10	0.08	0.10	1.02	-	
Apr	6.33	1.79	1.68	1.88	2.44	1.79	1.93	2.06	5.95	-0.10	-0.37	-0.66	1.26	0.52	1.81	-	
May	-5.90	1.86	2.40	3.82	3.27	2.49	2.34	2.20	-9.06	2.99	4.00	5.07	-2.07	-1.54	-0.58	-	
<b>Compound Annual Returns</b>																	
<b>Complete History</b>	12.19	7.08	10.35	8.58	12.19	12.12	10.26	10.85	7.46	13.46	11.73	9.61	8.03	8.12	9.65	9.08	
1-Year	19.39	21.96	27.88	22.23	18.10	32.14	27.28	23.18	9.48	31.31	31.07	30.86	1.23	-0.16	14.82	11.57	
3-Year	14.66	10.83	13.41	11.64	13.82	12.63	13.28	14.01	11.76	10.36	12.35	14.39	5.30	3.52	10.52	8.88	
5-Year	5.80	3.29	6.20	7.32	9.07	4.12	5.60	7.02	3.12	7.11	7.98	8.73	5.38	4.84	10.79	2.84	
10-Year	12.00	5.90	8.93	8.89	10.34	8.23	8.06	7.83	10.71	10.51	10.81	10.99	4.83	4.81	9.54	8.33	
15-Year	9.67	3.45	4.96	4.16	5.94	4.55	4.47	4.09	5.59	7.53	6.22	4.35	5.79	5.63	7.08	9.43	
20-Year	10.71	7.67	9.02	8.58	11.42	8.55	8.86	8.90	6.73	10.51	9.14	7.28	6.08	5.99	8.03	8.43	
25-Year	10.82	8.33	10.03	9.21	11.94	9.57	10.01	10.15	-	10.93	9.51	7.62	7.09	7.05	8.77	7.42	
30-Year	11.46	8.71	10.48	8.55	-	10.69	10.67	10.37	-	11.21	9.24	6.87	7.82	7.96	-	7.97	
35-Year	12.90	8.60	11.67	10.18	-	11.62	11.59	11.22	-	-	-	-	8.05	8.17	-	-	
40-Year	12.59	7.23	10.62	9.03	-	-	10.39	-	-	-	-	-	7.82	-	-	-	
<b>Annualized Volatility of Returns</b>																	
<b>Complete History</b>	17.26	15.40	16.01	21.67	25.69	15.16	15.49	16.26	15.12	17.59	19.85	23.17	5.63	6.45	8.63	4.43	
1-Year	3.63	3.04	2.91	3.43	3.51	3.14	2.84	2.69	4.36	3.29	3.58	3.93	0.96	0.57	0.98	0.33	
3-Year	16.82	13.32	15.21	16.96	16.48	15.53	14.62	14.12	11.33	18.96	19.47	20.16	3.26	1.96	6.88	4.56	
5-Year	32.00	16.99	19.16	20.91	20.90	20.48	18.54	17.33	14.60	24.38	24.02	24.16	4.54	2.79	13.69	7.45	
10-Year	25.56	13.60	15.06	17.87	18.36	15.94	14.52	13.81	13.36	19.69	19.81	20.46	4.39	2.76	10.35	6.17	
15-Year	22.25	15.52	16.62	26.02	28.42	17.02	16.09	16.59	16.66	19.16	21.33	24.98	4.25	2.70	10.08	5.23	
20-Year	19.97	14.85	15.43	23.78	26.39	15.79	15.09	15.67	15.64	17.32	19.54	23.15	4.29	2.88	8.96	4.80	
25-Year	18.65	14.48	15.03	22.65	25.40	15.16	14.72	15.46	-	16.92	19.02	22.38	4.33	3.17	8.94	4.71	
30-Year	17.62	15.15	15.55	22.33	25.69	15.48	15.26	16.12	-	17.36	19.51	22.77	4.74	4.24	-	4.42	
35-Year	17.46	15.09	15.77	22.12	25.69	15.40	15.30	16.21	-	-	-	-	5.77	6.60	-	-	
40-Year	17.28	15.55	16.18	21.90	25.69	15.16	15.66	16.26	-	-	-	-	5.63	6.45	-	-	

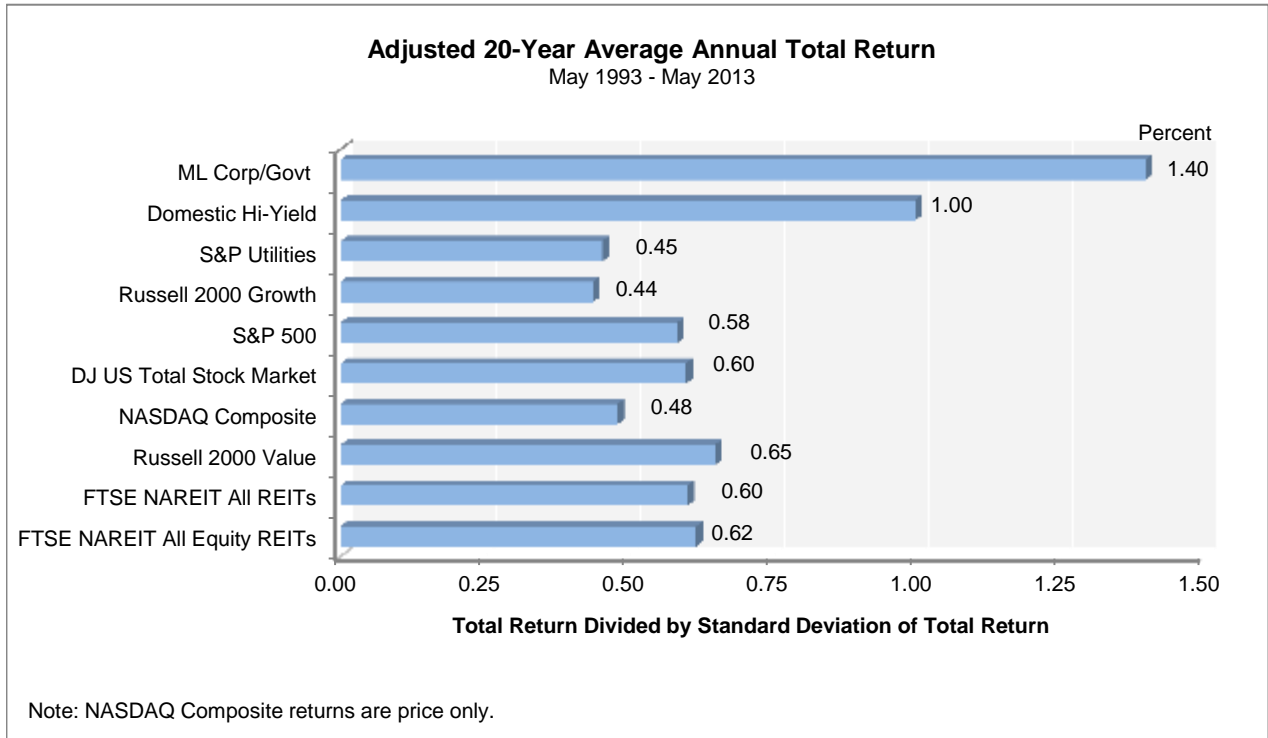
<sup>1</sup> Price only returns  
 Source: NAREIT®, FactSet.



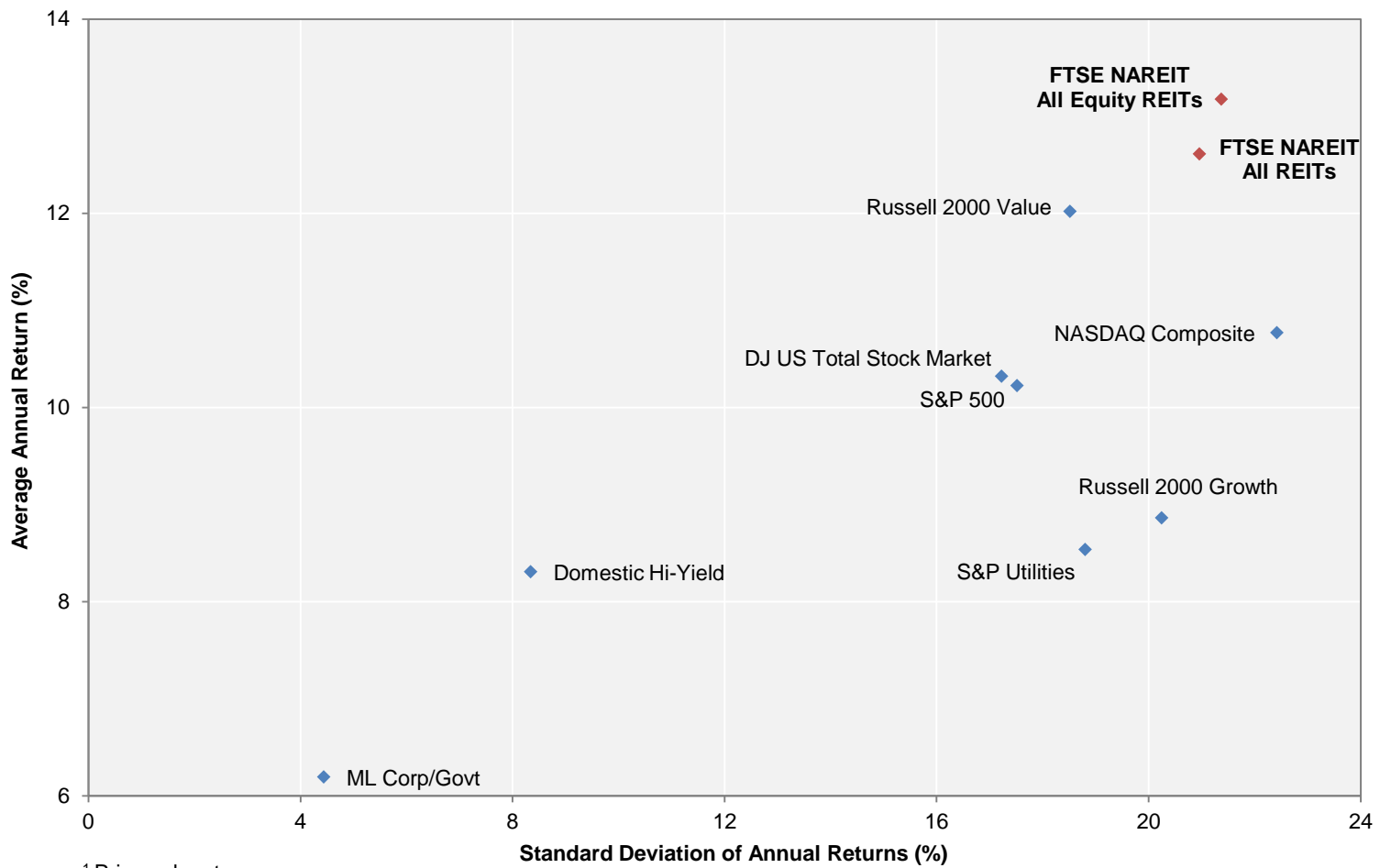
### Comparative Total Return Investment Correlation

	FTSE NAREIT All Equity REITs	DJ US Total Stock Market	NASDAQ Composite <sup>1</sup>	NASDAQ 100 <sup>1</sup>	S&P 500/ Citigroup Value	S&P 500	S&P 500/ Citigroup Growth	S&P Utilities	Russell 2000 Value	Russell 2000	Russell 2000 Growth	ML Corp/Govt Bond	ML Mortgage	Domestic High Yield Corp Bond	Dow Jones Industrial Average <sup>1</sup>
Period For Upper Right: May 2003 - May 2013															
FTSE NAREIT All Equity REITs	1.00	0.78	0.72	0.66	0.79	0.77	0.71	0.44	0.83	0.79	0.73	0.15	0.04	0.72	0.72
DJ US Total Stock Market	0.58	1.00	0.95	0.91	0.98	1.00	0.97	0.53	0.93	0.95	0.93	0.00	-0.13	0.73	0.96
NASDAQ Composite <sup>1</sup>	0.45	0.89	1.00	0.98	0.89	0.93	0.94	0.43	0.90	0.94	0.95	-0.07	-0.20	0.68	0.87
NASDAQ 100 <sup>1</sup>	0.38	0.86	0.97	1.00	0.84	0.89	0.92	0.42	0.83	0.88	0.91	-0.08	-0.19	0.66	0.84
S&P 500/ Citigroup Value	0.62	0.95	0.74	0.71	1.00	0.98	0.92	0.51	0.93	0.92	0.88	0.01	-0.11	0.68	0.96
S&P 500	0.56	0.99	0.84	0.83	0.96	1.00	0.98	0.54	0.91	0.92	0.90	0.01	-0.11	0.72	0.97
S&P 500/ Citigroup Growth	0.46	0.96	0.87	0.88	0.86	0.97	1.00	0.54	0.86	0.89	0.89	0.01	-0.10	0.73	0.94
S&P Utilities	0.36	0.42	0.21	0.21	0.50	0.44	0.34	1.00	0.42	0.42	0.42	0.37	0.24	0.46	0.51
Russell 2000 Value	0.74	0.86	0.75	0.66	0.84	0.81	0.73	0.40	1.00	0.99	0.95	-0.05	-0.17	0.66	0.87
Russell 2000	0.64	0.89	0.88	0.80	0.81	0.83	0.79	0.34	0.95	1.00	0.99	-0.07	-0.20	0.68	0.86
Russell 2000 Growth	0.54	0.88	0.93	0.86	0.75	0.80	0.80	0.29	0.87	0.98	1.00	-0.10	-0.23	0.68	0.84
ML Corp/Govt Bond	0.14	0.12	0.02	0.02	0.12	0.14	0.14	0.28	0.03	0.00	-0.02	1.00	0.84	0.19	-0.01
ML Mortgage	0.07	0.10	0.02	0.01	0.11	0.12	0.13	0.20	0.01	-0.01	-0.03	0.87	1.00	0.04	-0.10
Domestic High Yield Corp Bond	0.60	0.60	0.54	0.49	0.58	0.58	0.54	0.33	0.62	0.61	0.57	0.26	0.22	1.00	0.64
Dow Jones Industrial Average <sup>1</sup>	0.52	0.93	0.75	0.73	0.94	0.95	0.90	0.42	0.78	0.77	0.73	0.10	0.10	0.53	1.00
Period For Lower Left: May 1983 - May 2013															

<sup>1</sup> Price only returns.  
 Source: NAREIT®, FactSet.



**20-Year Average Annual Total Return v.  
 20-Year Standard Deviation of Annual Total Returns**  
 May 1993 - May 2013

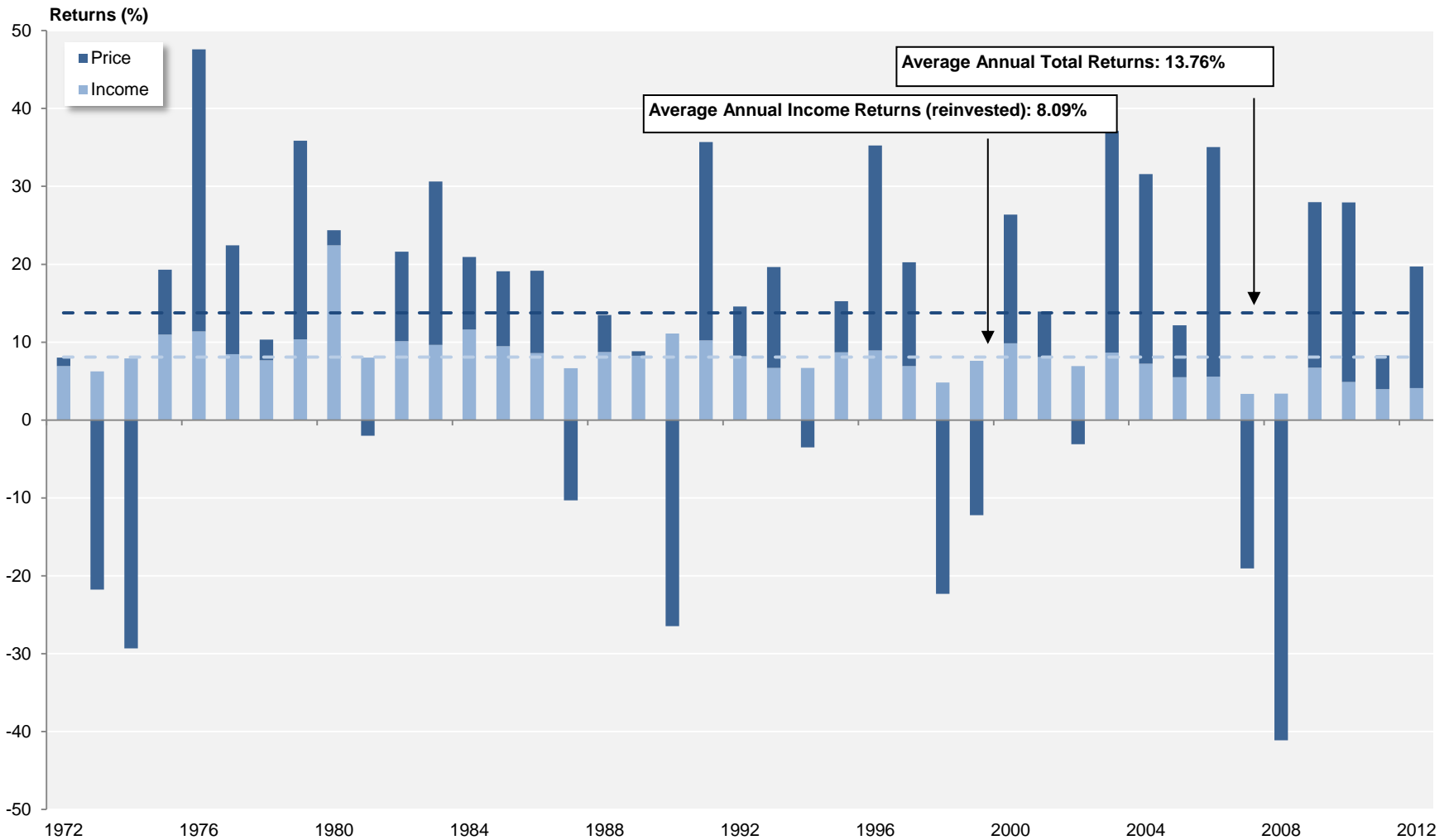


<sup>1</sup> Price only returns.  
 Source: NAREIT®, FactSet.

## FTSE NAREIT All Equity REITs

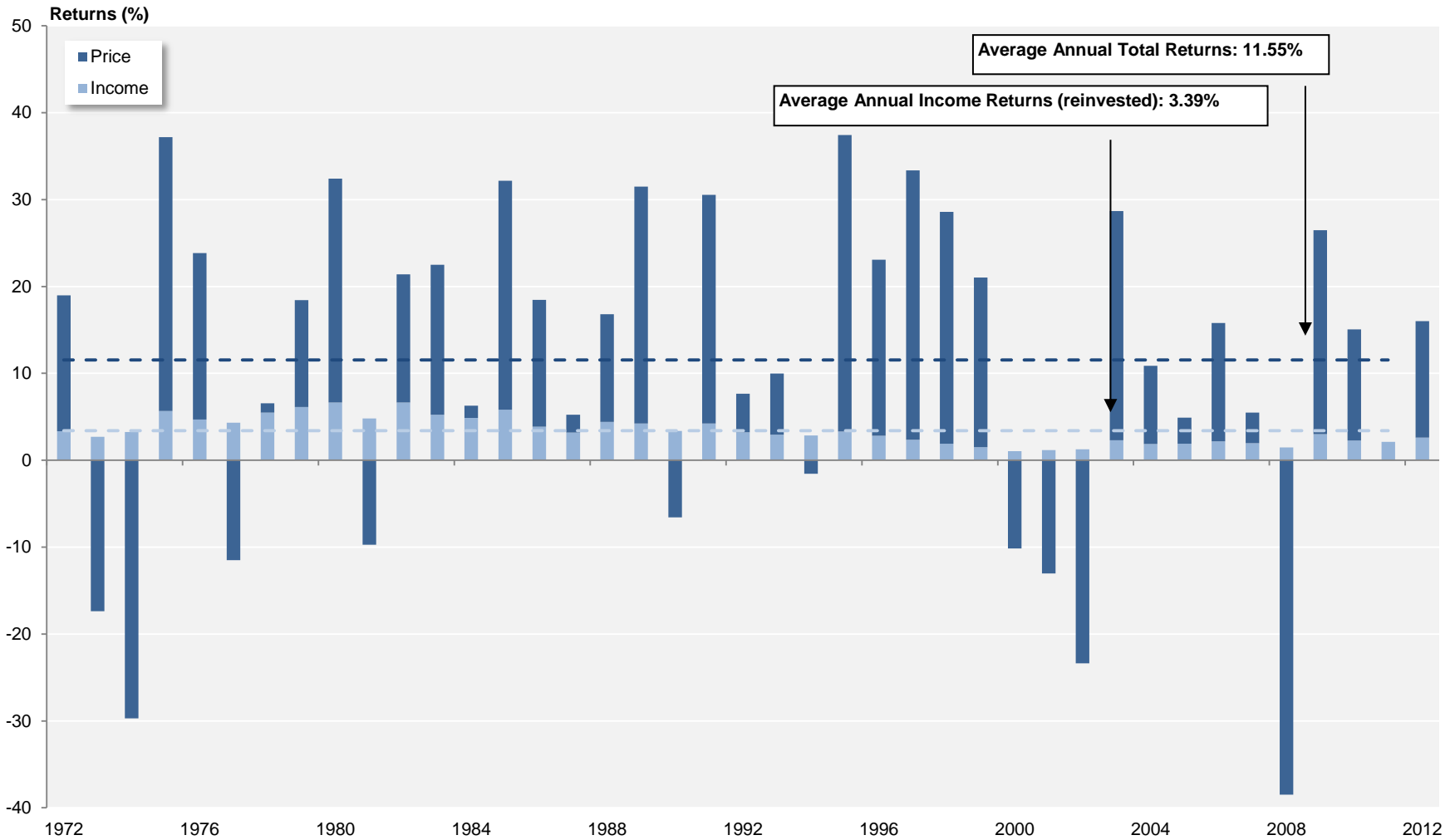
Annual Returns

1972 - 2012



Source: FTSE™, NAREIT®.

**S&P 500**  
**Annual Returns**  
 1972 - 2012

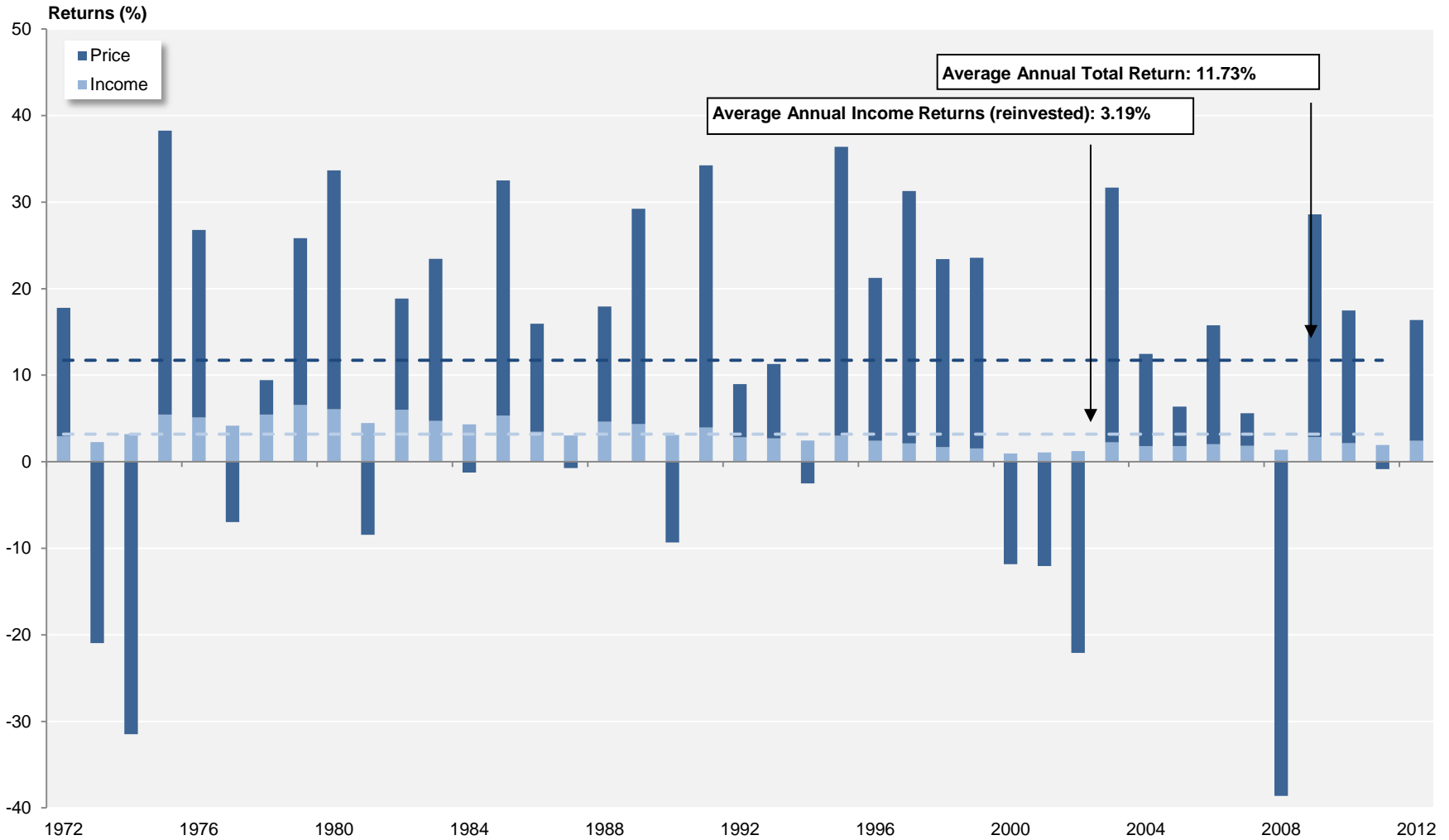


Source: NAREIT®, FactSet.

## Dow Jones US Total Stock Market

Annual Returns

1972 - 2012



Source: NAREIT®, FactSet.

**Annual Returns for the FTSE NAREIT US Real Estate Index Series**  
1972-2012

Year	FTSE NAREIT All REITs				FTSE NAREIT Composite				FTSE NAREIT Real Estate 50™				FTSE NAREIT All Equity REITs				FTSE NAREIT Equity REITs				FTSE NAREIT Mortgage REITs			
	Total		Price		Total		Price		Total		Price		Total		Price		Total		Price		Total		Price	
	Return (%)	Index	Return (%)	Index	Return (%)	Index	Return (%)	Index	Return (%)	Index	Return (%)	Index	Return (%)	Index	Return (%)	Index	Return (%)	Index	Return (%)	Index	Return (%)	Index	Return (%)	Index
1971		100.00		100.00		100.00		100.00		100.00		100.00		100.00		100.00		100.00		100.00		100.00		100.00
1972	11.19	111.19	3.84	103.84	11.19	111.19	3.84	103.84					8.01	108.01	1.08	101.08	8.01	108.01	1.08	101.08	12.17	112.17	4.34	104.34
1973	-27.22	80.93	-33.11	69.46	-27.22	80.93	-33.11	69.46					-15.52	91.25	-21.78	79.07	-15.52	91.25	-21.78	79.07	-36.26	71.50	-42.05	60.47
1974	-42.23	46.75	-49.55	35.04	-42.23	46.75	-49.55	35.04					-21.40	71.72	-29.33	55.88	-21.40	71.72	-29.33	55.88	-45.32	39.09	-53.96	27.84
1975	36.34	63.74	22.20	42.82	36.34	63.74	22.20	42.82					19.30	85.56	8.34	60.54	19.30	85.56	8.34	60.54	40.79	55.04	24.51	34.66
1976	48.97	94.96	36.53	58.47	48.97	94.96	36.53	58.47					47.59	126.28	36.21	82.46	47.59	126.28	36.21	82.46	51.71	83.50	38.41	47.97
1977	19.08	113.07	10.10	64.37	19.08	113.07	10.10	64.37					22.42	154.59	13.97	93.98	22.42	154.59	13.97	93.98	17.82	98.38	8.16	51.89
1978	-1.64	111.21	-9.42	58.31	-1.64	111.21	-9.42	58.31					10.34	170.57	2.66	96.48	10.34	170.57	2.66	96.48	-9.97	88.57	-17.86	42.62
1979	30.53	145.16	19.35	69.59	30.53	145.16	19.35	69.59					35.86	231.73	25.49	121.07	35.86	231.73	25.49	121.07	16.56	103.24	4.26	44.44
1980	28.02	185.84	11.07	77.30	28.02	185.84	11.07	77.30					24.37	288.20	1.95	123.42	24.37	288.20	1.95	123.42	16.80	120.58	3.29	45.90
1981	8.58	201.78	-1.02	76.51	8.58	201.78	-1.02	76.51					6.00	305.50	-2.03	120.92	6.00	305.50	-2.03	120.92	7.07	129.11	-5.54	43.36
1982	31.64	265.62	19.19	91.19	31.64	265.62	19.19	91.19					21.60	371.49	11.49	134.81	21.60	371.49	11.49	134.81	48.64	191.91	31.27	56.91
1983	25.47	333.28	15.11	104.97	25.47	333.28	15.11	104.97					30.64	485.30	21.01	163.13	30.64	485.30	21.01	163.13	16.90	224.34	5.56	60.08
1984	14.82	382.65	3.53	108.67	14.82	382.65	3.53	108.67					20.93	586.86	9.30	178.30	20.93	586.86	9.30	178.30	7.26	240.64	-4.54	57.35
1985	5.92	405.30	-3.52	104.84	5.92	405.30	-3.52	104.84					19.10	698.93	9.62	195.45	19.10	698.93	9.62	195.45	-5.20	228.11	-15.33	48.55
1986	19.18	483.03	9.24	114.53	19.18	483.03	9.24	114.53					19.16	832.83	10.56	216.10	19.16	832.83	10.56	216.10	19.21	271.95	7.64	52.26
1987	-10.67	431.49	-19.01	92.76	-10.67	431.49	-19.01	92.76					-3.64	802.51	-10.31	193.82	-3.64	802.51	-10.31	193.82	-15.67	229.34	-25.70	38.83
1988	11.36	480.49	1.24	93.92	11.36	480.49	1.24	93.92					13.49	910.74	4.77	203.07	13.49	910.74	4.77	203.07	7.30	246.09	-5.12	36.84
1989	-1.81	471.78	-12.06	82.59	-1.81	471.78	-12.06	82.59					8.84	991.26	0.58	204.24	8.84	991.26	0.58	204.24	-15.90	206.95	-26.19	27.20
1990	-17.35	389.95	-28.49	59.05	-17.35	389.95	-28.49	59.05					-15.35	839.09	-26.45	150.21	-15.35	839.09	-26.45	150.21	-18.37	168.94	-29.18	19.26
1991	35.68	529.08	23.10	72.69	35.68	529.08	23.10	72.69					35.70	1,138.61	25.47	188.47	35.70	1,138.61	25.47	188.47	31.83	222.72	13.93	21.94
1992	12.18	593.49	2.87	74.78	12.18	593.49	2.87	74.78					14.59	1,304.73	6.40	200.54	14.59	1,304.73	6.40	200.54	1.92	226.99	-10.80	19.57
1993	18.55	703.57	10.58	82.69	18.55	703.57	10.58	82.69					19.65	1,561.17	12.95	226.51	19.65	1,561.17	12.95	226.51	14.55	260.01	-0.40	19.49
1994	0.81	709.24	-6.41	77.39	0.81	709.24	-6.41	77.39					3.17	1,610.67	-3.52	218.55	3.17	1,610.67	-3.52	218.55	-24.30	196.82	-33.83	12.90
1995	18.31	839.09	9.12	84.45	18.31	839.09	9.12	84.45					15.27	1,856.57	6.56	232.88	15.27	1,856.57	6.56	232.88	63.42	321.65	46.80	18.94
1996	35.75	1,139.10	26.52	106.84	35.75	1,139.10	26.52	106.84					35.27	2,511.32	26.35	294.24	35.27	2,511.32	26.35	294.24	50.86	485.25	37.21	25.98
1997	18.86	1,353.94	11.85	119.50	18.86	1,353.94	11.85	119.50					20.26	3,020.11	13.33	333.47	20.26	3,020.11	13.33	333.47	3.82	503.80	-3.57	25.05
1998	-18.82	1,099.09	-23.82	91.03	-18.82	1,099.09	-23.82	91.03					-17.50	2,491.53	-22.33	259.00	-17.50	2,491.53	-22.33	259.00	-29.22	356.60	-34.29	16.46
1999	-6.48	1,027.92	-14.06	78.23	-6.48	1,027.92	-14.06	78.23			100.00	100.00	-4.62	2,376.42	-12.21	227.37	-4.62	2,376.42	-12.21	227.37	-33.22	238.15	-40.12	9.86
2000	25.89	1,294.05	15.91	90.68	25.89	1,294.05	15.91	90.68	28.66	128.66	19.98	119.98	26.37	3,002.97	16.51	264.90	26.37	3,002.97	16.51	264.90	15.96	276.15	3.33	10.19
2001	15.50	1,494.65	7.05	97.07	15.50	1,494.65	7.05	97.07	12.20	144.36	5.13	126.14	13.93	3,421.37	5.85	280.40	13.93	3,421.37	5.85	280.40	77.34	489.74	46.37	14.91
2002	5.22	1,572.61	-2.15	94.98	5.22	1,572.61	-2.15	94.98	1.86	147.05	-4.30	120.71	3.82	3,552.10	-3.12	271.66	3.82	3,552.10	-3.12	271.66	31.08	641.93	14.23	17.03
2003	38.47	2,177.53	29.34	122.85	38.47	2,177.53	29.34	122.85	36.30	200.44	28.34	154.92	37.13	4,871.12	28.48	349.02	37.13	4,871.12	28.48	349.02	57.39	1,010.33	38.19	23.54
2004	30.41	2,839.70	22.87	150.94	30.41	2,839.70	22.87	150.94	35.00	270.58	28.31	198.79	31.58	6,409.30	24.35	434.01	31.58	6,409.30	24.35	434.01	18.43	1,196.57	7.92	25.40
2005	8.29	3,075.06	2.51	154.73	8.29	3,075.06	2.51	154.73	13.67	307.57	8.52	215.71	12.16	7,188.85	6.67	462.98	12.16	7,188.85	6.67	462.98	-23.19	919.11	-30.88	17.56
2006	34.35	4,131.39	28.31	198.53	34.02	4,121.18	27.98	198.02	35.64	417.18	30.28	281.03	35.06	9,709.31	29.51	599.59	35.06	9,709.31	29.51	599.59	19.32	1,096.72	8.44	19.04
2007	-17.83	3,394.71	-21.39	156.07	-17.83	3,386.30	-21.42	155.60	-16.34	349.00	-19.57	226.03	-15.69	8,185.75	-19.05	485.36	-15.69	8,185.75	-19.05	485.36	-42.35	632.27	-47.69	9.96
2008	-37.34	2,127.27	-41.04	92.02	-37.84	2,104.93	-41.56	90.94	-37.31	218.80	-40.78	133.85	-37.73	5,097.46	-41.12	285.79	-37.73	5,097.46	-41.12	285.79	-31.31	434.31	-40.46	5.93
2009	27.45	2,711.15	19.90	110.33	27.80	2,690.12	20.15	109.26	27.62	279.23	20.36	161.10	27.99	6,524.25	21.28	346.60	27.99	6,524.25	21.28	346.60	24.63	541.28	8.26	6.42
2010	27.58	3,458.89	21.81	134.39	27.56	3,431.62	21.76	133.03	26.72	353.83	21.13	195.14	27.95	8,347.58	23.07	426.55	27.96	8,348.46	23.06	426.53	22.60	663.59	7.01	6.87
2011	7.28	3,710.61	2.37	137.57	7.30	3,682.29	2.34	136.14	9.45	387.25	4.69	204.29	8.28	9,039.07	4.32	444.96	8.29	9,040.81	4.32	444.95	-2.42	647.56	-15.14	5.83
2012	20.14	4,458.10	14.98	158.18	19.73	4,408.71	14.54	155.93	18.05	457.14	13.37	231.60	19.70	10,819.84	15.61	514.43	18.06	10,673.56	13.86	506.60	19.89	776.34	5.83	6.17

**Annual Price and Total Returns by Property Sector**  
 1994 - 2012  
 (Returns in Percent)

	Industrial/Office		Retail		Residential		Diversified		Health Care		Lodging/Resorts		Self Storage		Timber		Infrastructure		Mortgage	
	Total	Price	Total	Price	Total	Price	Total	Price	Total	Price	Total	Price	Total	Price	Total	Price	Total	Price	Total	Price
1994	16.59	10.25	2.98	-3.94	2.31	-3.77	-6.04	-11.54	4.12	-3.54	-8.89	-12.79	8.90	1.31	-	-	-	-	-24.30	-33.81
1995	25.80	16.94	5.10	-3.20	11.99	3.80	21.16	12.54	24.88	13.93	30.79	22.35	34.40	25.42	-	-	-	-	63.42	46.82
1996	44.43	35.90	34.61	24.43	29.46	19.72	33.96	22.25	20.40	11.87	49.19	40.32	42.85	34.51	-	-	-	-	50.86	37.17
1997	27.49	20.90	16.95	9.83	16.31	9.04	21.67	13.15	15.76	7.56	30.09	23.30	3.41	-1.25	-	-	-	-	3.82	-3.58
1998	-14.44	-19.16	-4.74	-10.87	-8.11	-13.69	-22.11	-26.02	-17.45	-23.65	-52.83	-55.01	-7.20	-10.85	-	-	-	-	-29.22	-34.29
1999	3.35	-4.07	-11.77	-18.89	9.48	1.81	-14.41	-23.71	-24.83	-31.98	-16.14	-24.05	-8.03	-14.20	-	-	-	-	-33.22	-40.10
2000	33.38	23.26	17.97	7.72	34.30	25.25	24.10	15.21	25.84	9.97	45.77	30.83	14.69	6.50	-	-	-	-	15.96	3.35
2001	7.09	-0.41	30.41	20.61	9.04	2.02	12.52	4.80	51.86	39.11	-8.63	-16.32	43.24	36.55	-	-	-	-	77.35	46.32
2002	0.87	-5.95	21.07	13.11	-5.99	-12.63	4.24	-3.38	4.82	-3.08	-1.49	-7.04	0.56	-5.01	-	-	-	-	31.08	14.22
2003	33.26	24.62	46.77	38.46	25.90	17.65	40.25	27.87	53.59	41.65	31.69	26.57	38.14	30.75	-	-	-	-	57.39	38.23
2004	25.24	18.42	40.23	33.23	32.71	24.08	32.41	22.20	20.96	13.35	32.70	29.08	29.70	24.33	-	-	-	-	18.43	7.90
2005	12.85	6.71	11.80	6.60	13.69	8.31	9.87	4.04	1.79	-4.61	9.76	5.93	26.55	21.98	-	-	-	-	-23.19	-30.87
2006	39.39	34.06	29.02	24.00	38.93	33.80	38.03	32.10	44.55	35.81	28.16	22.75	40.94	36.66	-	-	-	-	19.32	8.43
2007	-14.86	-18.17	-15.77	-18.97	-25.21	-28.08	-22.29	-25.40	2.13	-3.47	-22.37	-25.98	-24.82	-27.16	-	-	-	-	-42.35	-47.69
2008	-50.28	-53.02	-48.36	-51.28	-24.89	-29.08	-28.25	-31.84	-11.98	-17.06	-59.67	-62.72	5.05	1.44	-	-	-	-	-31.31	-40.46
2009	29.17	21.40	27.17	21.57	30.82	22.81	17.02	12.77	24.62	15.76	67.19	64.53	8.37	4.44	-	-	-	-	24.63	8.26
2010	17.04	12.52	33.41	28.43	46.01	40.87	23.75	19.03	19.20	12.71	42.77	40.51	29.29	25.20	-	-	-	-	22.60	7.01
2011	-1.47	-5.16	12.20	8.27	15.37	11.82	2.82	-1.32	13.63	7.62	-14.31	-16.38	35.22	31.04	7.65	3.77	-	-	-2.42	-15.14
2012	19.12	14.88	26.74	22.58	6.94	3.60	12.20	7.63	20.35	14.50	12.53	9.33	19.94	16.21	37.05	32.58	29.91	28.25	19.89	5.83



**Annual Price and Total Returns by Property Subsector**  
 1994 - 2012  
 (Returns in Percent)

	Industrial/Office						Retail						Residential				Mortgage			
	Industrial		Office		Mixed		Shopping Centers		Regional Malls		Free Standing		Apartments		Manufactured Homes		Home Financing		Commercial Financing	
	Total	Price	Total	Price	Total	Price	Total	Price	Total	Price	Total	Price	Total	Price	Total	Price	Total	Price	Total	Price
1994	18.66	13.37	2.86	-2.68	-	-	1.33	-5.49	8.77	1.41	-5.46	-17.52	2.19	-3.91	3.31	-2.59	-	-	-	-
1995	16.21	8.55	38.79	28.34	-	-	7.40	-0.74	3.00	-5.74	31.56	20.28	12.26	3.94	10.68	2.87	-	-	-	-
1996	37.22	28.99	51.82	42.85	40.79	32.74	33.49	23.37	45.27	34.10	30.95	20.38	28.93	19.07	34.93	26.58	-	-	-	-
1997	19.02	12.76	29.01	22.56	27.91	21.01	21.44	14.36	13.69	6.58	17.70	10.22	16.04	8.77	16.17	9.33	-	-	-	-
1998	-11.74	-16.32	-17.35	-22.14	-8.85	-13.52	-6.99	-13.00	-2.62	-8.17	-6.25	-11.97	-8.77	-14.37	-0.86	-6.10	-	-	-	-
1999	3.90	-4.03	4.26	-3.11	-0.72	-7.62	-10.71	-18.03	-14.58	-21.22	-4.89	-12.31	10.72	2.87	-2.80	-8.77	-	-	-	-
2000	28.62	14.48	35.45	26.62	31.97	22.63	15.10	4.27	23.50	13.63	8.94	-0.34	35.53	26.40	20.94	12.62	9.16	-1.60	25.60	10.13
2001	7.42	0.53	6.65	-0.79	8.15	-0.36	29.89	19.83	31.87	22.87	23.95	12.06	8.66	1.68	13.72	6.37	102.02	68.36	37.37	10.17
2002	17.32	10.23	-6.29	-12.74	8.56	0.87	17.72	9.63	24.56	16.76	21.76	13.65	-6.15	-12.88	-4.05	-9.61	28.25	11.40	38.50	21.27
2003	33.13	25.76	34.01	24.84	31.30	22.76	43.12	34.99	52.24	43.75	35.92	27.70	25.49	17.22	29.99	21.51	42.73	22.74	84.67	68.53
2004	34.10	27.78	23.28	16.22	19.59	12.99	36.25	29.63	45.01	37.70	32.87	26.03	34.72	26.50	6.40	-8.40	24.91	12.89	7.45	-0.10
2005	15.41	10.76	13.11	6.76	7.40	-0.12	9.27	3.59	16.54	11.76	-0.49	-5.44	14.65	9.12	-2.58	-6.04	-25.95	-33.94	-16.06	-22.82
2006	28.92	24.46	45.22	39.76	28.28	22.08	34.87	29.74	23.83	19.19	30.74	23.65	39.95	34.77	15.35	11.57	14.75	3.87	30.31	19.61
2007	0.38	-3.17	-18.96	-22.01	-33.09	-36.66	-17.68	-20.98	-15.85	-18.80	-0.43	-5.26	-25.43	-28.30	-19.34	-22.24	-38.23	-43.41	-48.79	-54.29
2008	-67.47	-69.38	-41.07	-44.02	-33.99	-39.27	-38.84	-42.23	-60.60	-62.79	-15.09	-20.32	-25.13	-29.33	-20.18	-24.06	-20.02	-30.25	-74.84	-78.24
2009	12.17	4.84	35.55	28.04	34.90	25.34	-1.66	-7.44	62.99	59.53	25.93	16.15	30.40	22.37	40.92	33.33	28.19	11.18	-40.99	-46.15
2010	18.89	13.60	18.41	14.50	8.75	2.82	30.78	25.83	34.64	30.15	37.37	29.32	47.04	41.89	27.02	22.11	21.02	5.04	41.99	33.88
2011	-5.16	-8.74	-0.76	-4.21	2.67	-2.76	-0.73	-4.48	22.00	18.23	0.43	-4.94	15.10	11.63	20.38	15.48	-0.87	-14.41	-11.34	-18.54
2012	31.28	26.89	14.15	10.26	20.81	15.04	25.02	20.40	28.21	24.56	22.46	16.57	6.93	3.62	7.10	3.22	16.38	1.94	42.98	31.06

**Equity Market Capitalization**  
(Millions of dollars at year end)

Year	<u>All REITs</u>		<u>Equity</u>			<u>Mortgage</u>			<u>Hybrid<sup>1</sup></u>		
	Number of REITs	Market Capitalization	Number of REITs	Market Capitalization	Percent of All REITs	Number of REITs	Market Capitalization	Percent of All REITs	Number of REITs	Market Capitalization	Percent of All REITs
1971	34	1,494.3	12	332.0	22.2	12	570.8	38.2	10	591.6	39.6
1972	46	1,880.9	17	377.3	20.1	18	774.7	41.2	11	728.9	38.8
1973	53	1,393.5	20	336.0	24.1	22	517.3	37.1	11	540.2	38.8
1974	53	712.4	19	241.9	34.0	22	238.8	33.5	12	231.7	32.5
1975	46	899.7	12	275.7	30.6	22	312.0	34.7	12	312.0	34.7
1976	62	1,308.0	27	409.6	31.3	22	415.6	31.8	13	482.8	36.9
1977	69	1,528.1	32	538.1	35.2	19	398.3	26.1	18	591.6	38.7
1978	71	1,412.4	33	575.7	40.8	19	340.3	24.1	19	496.4	35.1
1979	71	1,754.0	32	743.6	42.4	19	377.1	21.5	20	633.3	36.1
1980	75	2,298.6	35	942.2	41.0	21	509.5	22.2	19	846.8	36.8
1981	76	2,438.9	36	977.5	40.1	21	541.3	22.2	19	920.1	37.7
1982	66	3,298.6	30	1,071.4	32.5	20	1,133.4	34.4	16	1,093.8	33.2
1983	59	4,257.2	26	1,468.6	34.5	19	1,460.0	34.3	14	1,328.7	31.2
1984	59	5,085.3	25	1,794.5	35.3	20	1,801.3	35.4	14	1,489.4	29.3
1985	82	7,674.0	37	3,270.3	42.6	32	3,162.4	41.2	13	1,241.2	16.2
1986	96	9,923.6	45	4,336.1	43.7	35	3,625.8	36.5	16	1,961.7	19.8
1987	110	9,702.4	53	4,758.5	49.0	38	3,161.4	32.6	19	1,782.4	18.4
1988	117	11,435.2	56	6,141.7	53.7	40	3,620.8	31.7	21	1,672.6	14.6
1989	120	11,662.2	56	6,769.6	58.0	43	3,536.3	30.3	21	1,356.3	11.6
1990	119	8,737.1	58	5,551.6	63.5	43	2,549.2	29.2	18	636.3	7.3
1991	138	12,968.2	86	8,785.5	67.7	28	2,586.3	19.9	24	1,596.4	12.3
1992	142	15,912.0	89	11,171.1	70.2	30	2,772.8	17.4	23	1,968.1	12.4
1993	189	32,158.7	135	26,081.9	81.1	32	3,398.5	10.6	22	2,678.2	8.3
1994	226	44,306.0	175	38,812.0	87.6	29	2,502.7	5.6	22	2,991.3	6.8
1995	219	57,541.3	178	49,913.0	86.7	24	3,395.4	5.9	17	4,232.9	7.4
1996	199	88,776.3	166	78,302.0	88.2	20	4,778.6	5.4	13	5,695.8	6.4
1997	211	140,533.8	176	127,825.3	91.0	26	7,370.3	5.2	9	5,338.2	3.8
1998	210	138,301.4	173	126,904.5	91.8	28	4,916.2	3.6	9	6,480.7	4.7
1999	203	124,261.9	167	118,232.7	95.1	26	4,441.7	3.6	10	1,587.5	1.3
2000	189	138,715.4	158	134,431.0	96.9	22	2,652.4	1.9	9	1,632.0	1.2
2001	182	154,898.6	151	147,092.1	95.0	22	3,990.5	2.6	9	3,816.0	2.5
2002	176	161,937.3	149	151,271.5	93.4	20	7,146.4	4.4	7	3,519.4	2.2
2003	171	224,211.9	144	204,800.4	91.3	20	14,186.5	6.3	7	5,225.0	2.3
2004	190	305,025.1	150	273,629.0	89.7	33	24,774.1	8.1	7	6,622.0	2.2
2005	197	330,691.3	152	301,491.0	91.2	37	23,393.7	7.1	8	5,806.6	1.8
2006	183	438,071.1	138	400,741.4	91.5	38	29,195.3	6.7	7	8,134.3	1.9
2007	152	312,009.0	118	288,694.6	92.5	29	19,054.1	6.1	5	4,260.3	1.4
2008	136	191,651.0	113	176,237.7	92.0	20	14,280.5	7.5	3	1,132.9	0.6
2009	142	271,199.1	115	248,355.1	91.6	23	22,103.2	8.2	4	740.8	0.3
2010	153	389,295.4	126	358,908.2	92.2	27	30,387.2	7.8	--	--	--
2011	160	450,500.6	130	407,528.9	90.5	30	42,971.7	9.5	--	--	--
2012	172	603,415.3	139	544,414.9	90.2	33	59,000.3	9.8	--	--	--

Note:

Market capitalization equals share price multiplied by the number of shares outstanding and does not include Operating Partnership Units.

<sup>1</sup>The FTSE NAREIT Hybrid REIT Index was discontinued on December 17, 2010.

Source: NAREIT®

**REITs in the FTSE NAREIT All REITs Index and S&P Equity Indexes**

(Ranked by equity market capitalization)

May 31, 2013

Number of REITs	Company	Ticker Symbol	Investment Sector	Property Subsector	Equity Market Capitalization (\$M) <sup>1</sup>				
					S&P REITs	FTSE NAREIT All REITs	Percent of Sector	Percent of S&P REITs	% of FTSE NAREIT All REITs
(1)	(2)	(3)	(4)	(5)	(6)	(7)	(8)	(9)	(10)
<b>Summary by Investment Sector, Property Sector and Property Subsector</b>									
<b>31</b>	<b>Industrial/Office</b>				<b>79,789.9</b>	<b>101,531.6</b>		<b>16.17</b>	<b>15.10</b>
18	Office				47,617.7	60,714.0		9.65	9.03
7	Industrial				20,239.4	25,551.9		4.10	3.80
6	Mixed				11,932.8	15,265.7		2.42	2.27
<b>34</b>	<b>Retail</b>				<b>114,059.6</b>	<b>154,479.0</b>		<b>23.11</b>	<b>22.98</b>
20	Shopping Centers				35,015.3	47,492.5		7.09	7.06
8	Regional Malls				66,273.3	91,880.0		13.43	13.67
6	Free Standing				12,771.0	15,106.5		2.59	2.25
<b>20</b>	<b>Residential</b>				<b>78,164.3</b>	<b>86,291.1</b>		<b>15.84</b>	<b>12.83</b>
17	Apartments				78,164.3	81,134.2		15.84	12.07
3	Manufactured Homes				0.0	5,156.9		0.00	0.77
24	Diversified				28,404.3	50,964.1		5.75	7.58
17	Lodging/Resorts				21,247.2	36,295.5		4.30	5.40
4	Self Storage				32,394.6	34,418.2		6.56	5.12
12	Health Care				76,105.8	79,059.3		15.42	11.76
4	Timber				32,521.8	32,521.8		6.59	4.84
1	Infrastructure				30,873.7	30,889.0		6.26	4.59
<b>39</b>	<b>Mortgage REITs</b>				<b>0.0</b>	<b>65,867.7</b>		<b>0.00</b>	<b>9.80</b>
23	Home Financing				0.0	50,957.1		0.00	7.58
16	Commercial Financing				0.0	14,910.6		0.00	2.22
<b>187</b>	<b>Industry Totals</b>				<b>493,561.3</b>	<b>672,317.3</b>		<b>100.00</b>	<b>100.00</b>
<b>Distribution of REITs by S&amp;P Index</b>									
17	S&P 500 Large Cap					313,732		63.56	46.66
29	S&P 400 Mid Cap					131,754		26.69	19.60
30	S&P 600 Small Cap					48,076		9.74	7.15
<b>76</b>	<b>Total S&amp;P REITs</b>					<b>493,561.3</b>		<b>100.00</b>	<b>73.41</b>

**REITs in the FTSE NAREIT All REITs Index and S&P Equity Indexes**

(Ranked by equity market capitalization)

May 31, 2013

**Summary of REITs in S&P Equity Indexes**

	<u>Equity Market Capitalization<sup>1</sup></u>
<b>S&amp;P 500 Constituents</b>	
1 Simon Property Group Inc.	51,111.1
2 American Tower Corp	30,873.7
3 Public Storage	25,832.5
4 HCP Inc.	21,457.5
5 Ventas Inc.	20,999.1
6 Equity Residential	20,357.3
7 Prologis Inc.	18,497.8
8 Health Care REIT Inc.	17,621.5
9 AvalonBay Communities Inc.	17,162.4
10 Weyerhaeuser Co.	16,148.5
11 Boston Properties Inc.	15,967.3
12 Vornado Realty Trust	14,882.1
13 Host Hotels & Resorts Inc.	12,793.7
14 Kimco Realty Corp.	8,989.2
15 Macerich Co.	8,867.8
16 Plum Creek Timber Company Inc.	7,765.9
17 Apartment Investment & Management Co.	4,404.2
<b>17 Subtotal</b>	<b>313,731.6</b>
<b>S&amp;P 400 Mid Cap Constituents</b>	
1 Realty Income Corp.	8,124.1
2 SL Green Realty Corp.	7,796.4
3 Federal Realty Investment Trust	6,963.4
4 Rayonier Inc. REIT	6,783.8
5 UDR Inc.	6,097.5
6 Camden Property Trust	5,788.3
7 Essex Property Trust Inc.	5,722.1
8 Duke Realty Corp.	5,330.0
9 Taubman Centers Inc.	4,971.6
10 Senior Housing Properties Trust	4,861.2
11 Alexandria Real Estate Equities Inc.	4,825.0
12 Liberty Property Trust	4,761.5
13 Regency Centers Corp.	4,638.8
14 Extra Space Storage Inc.	4,587.9
15 American Campus Communities Inc.	4,272.1
16 Hospitality Properties Trust	4,077.5
17 Corrections Corp. of America	3,974.6
18 Kilroy Realty Corp.	3,952.0
19 National Retail Properties Inc.	3,947.0
20 Weingarten Realty Investors	3,852.3
21 BioMed Realty Trust Inc.	3,849.7
22 BRE Properties Inc.	3,834.1
23 Omega Healthcare Investors Inc.	3,631.5
24 Home Properties Inc.	3,114.5
25 Highwoods Properties Inc.	2,933.8
26 Equity One Inc.	2,761.5
27 Mack-Cali Realty Corp.	2,326.7
28 Corporate Office Properties Trust	2,151.5
29 Potlatch Corp.	1,823.6
<b>29 Subtotal</b>	<b>131,754.1</b>
<b>S&amp;P 600 Small Cap Constituents</b>	
1 Tanger Factory Outlet Centers Inc.	3,237.1
2 Mid-America Apartment Communities Inc.	2,872.9
3 Lexington Realty Trust	2,673.6
4 Post Properties Inc.	2,590.5
5 LaSalle Hotel Properties	2,520.2
6 Geo Group Inc.	2,480.4
7 EPR Properties	2,437.4
8 Healthcare Realty Trust Inc.	2,320.6
9 Medical Properties Trust Inc.	2,222.0
10 Sovran Self Storage Inc.	1,974.2
11 Colonial Properties Trust	1,948.2
12 DiamondRock Hospitality Co.	1,855.8
13 PS Business Parks Inc.	1,841.2
14 EastGroup Properties Inc.	1,741.7
15 LTC Properties Inc.	1,423.6
16 Franklin Street Properties Corp.	1,333.9
17 Government Properties Income Trust	1,328.4
18 Pennsylvania Real Estate Investment Trust	1,322.8
19 Acadia Realty Trust	1,313.3
20 Cousins Properties Inc.	1,282.0
21 Parkway Properties Inc.	1,153.0
22 Sabra Healthcare REIT Inc.	997.3
23 Inland Real Estate Corp.	911.3
24 Saul Centers Inc.	886.8
25 Getty Realty Corp.	699.9
26 CoreSite Realty Corp.	674.2
27 Universal Health Realty Income Trust	571.6
28 Kite Realty Group Trust	554.8
29 Urstadt Biddle Properties Inc. CI A	494.0
30 Cedar Realty Trust Inc	412.8
<b>30 Subtotal</b>	<b>48,075.6</b>
<b>76 Total</b>	<b>493,561.3</b>

**REITs in the FTSE NAREIT All REITs Index and S&P Equity Indexes**

(Ranked by equity market capitalization)

May 31, 2013

<b>Property Sector: Industrial/Office</b>									
1	Boston Properties Inc.	BXP	Equity	Office	S&P 500	15,967.3	26.30	3.24	2.37
2	SL Green Realty Corp.	SLG	Equity	Office	S&P 400	7,796.4	12.84	1.58	1.16
3	Alexandria Real Estate Equities Inc.	ARE	Equity	Office	S&P 400	4,825.0	7.95	0.98	0.72
4	Kilroy Realty Corp.	KRC	Equity	Office	S&P 400	3,952.0	6.51	0.80	0.59
5	BioMed Realty Trust Inc.	BMR	Equity	Office	S&P 400	3,849.7	6.34	0.78	0.57
6	Douglas Emmett Inc.	DEI	Equity	Office		3,558.4	5.86		0.53
7	Piedmont Office Realty Trust Inc.	PDM	Equity	Office		3,207.4	5.28		0.48
8	Highwoods Properties Inc.	HIW	Equity	Office	S&P 400	2,933.8	4.83	0.59	0.44
9	CommonWealth REIT	CWH	Equity	Office		2,418.1	3.98		0.36
10	Mack-Cali Realty Corp.	CLI	Equity	Office	S&P 400	2,326.7	3.83	0.47	0.35
11	Corporate Office Properties Trust	OFC	Equity	Office	S&P 400	2,151.5	3.54	0.44	0.32
12	Brandywine Realty Trust	BDN	Equity	Office		2,021.0	3.33		0.30
13	Franklin Street Properties Corp.	FSP	Equity	Office	S&P 600	1,333.9	2.20	0.27	0.20
14	Government Properties Income Trust	GOV	Equity	Office	S&P 600	1,328.4	2.19	0.27	0.20
15	Hudson Pacific Properties Inc.	HPP	Equity	Office		1,224.1	2.02		0.18
16	Parkway Properties Inc.	PKY	Equity	Office	S&P 600	1,153.0	1.90	0.23	0.17
17	Healthcare Trust of America Inc	HTA	Equity	Office		488.6	0.80		0.07
18	MPG Office Trust Inc.	MPG	Equity	Office		178.7	0.29		0.03
<b>18 Subsector Totals</b>						<b>60,714.0</b>	<b>100.00</b>	<b>9.65</b>	<b>9.03</b>
<b>11 S&amp;P Subsector Total</b>						<b>47,617.7</b>			
<b>Property Sector: Industrial</b>									
1	Prologis Inc.	PLD	Equity	Industrial	S&P 500	18,497.8	72.39	3.75	2.75
2	DCT Industrial Trust Inc.	DCT	Equity	Industrial		1,967.7	7.70		0.29
3	EastGroup Properties Inc.	EGP	Equity	Industrial	S&P 600	1,741.7	6.82	0.35	0.26
4	First Industrial Realty Trust Inc.	FR	Equity	Industrial		1,660.5	6.50		0.25
5	STAG Industrial Inc.	STAG	Equity	Industrial		911.0	3.57		0.14
6	Monmouth Real Estate Investment Corp. CI A	MNR	Equity	Industrial		422.7	1.65		0.06
7	Terreno Realty Corp.	TRNO	Equity	Industrial		350.7	1.37		0.05
<b>7 Subsector Totals</b>						<b>25,551.9</b>	<b>100.00</b>	<b>4.10</b>	<b>3.80</b>
<b>2 S&amp;P Subsector Total</b>						<b>20,239.4</b>			
<b>Property Sector: Mixed</b>									
1	Duke Realty Corp.	DRE	Equity	Mixed	S&P 400	5,330.0	34.91	1.08	0.79
2	Liberty Property Trust	LYR	Equity	Mixed	S&P 400	4,761.5	31.19	0.96	0.71
3	Chambers Street Properties	CSG	Equity	Mixed		2,297.8	15.05		0.34
4	PS Business Parks Inc.	PSB	Equity	Mixed	S&P 600	1,841.2	12.06	0.37	0.27
5	First Potomac Realty Trust	FPO	Equity	Mixed		790.3	5.18		0.12
6	Gladstone Commercial Corp.	GOOD	Equity	Mixed		244.9	1.60		0.04
<b>6 Subsector Totals</b>						<b>15,265.7</b>	<b>100.00</b>	<b>2.42</b>	<b>2.27</b>
<b>3 S&amp;P Subsector Total</b>						<b>11,932.8</b>			
<b>31 Sector Totals</b>						<b>101,531.6</b>		<b>16.17</b>	<b>15.10</b>
<b>16 S&amp;P Sector Total</b>						<b>79,789.9</b>			
<b>Property Sector: Retail</b>									
1	Kimco Realty Corp.	KIM	Equity	Shopping Centers	S&P 500	8,989.2	18.93	1.82	1.34
2	Federal Realty Investment Trust	FRT	Equity	Shopping Centers	S&P 400	6,963.4	14.66	1.41	1.04
3	DDR Corp	DDR	Equity	Shopping Centers		5,408.5	11.39		0.80
4	Regency Centers Corp.	REG	Equity	Shopping Centers	S&P 400	4,638.8	9.77	0.94	0.69
5	Weingarten Realty Investors	WRI	Equity	Shopping Centers	S&P 400	3,852.3	8.11	0.78	0.57
6	Tanger Factory Outlet Centers Inc.	SKT	Equity	Shopping Centers	S&P 600	3,237.1	6.82	0.66	0.48
7	Retail Properties of America Inc.	RPAI	Equity	Shopping Centers		2,790.6	5.88		0.42
8	Equity One Inc.	EQY	Equity	Shopping Centers	S&P 400	2,761.5	5.81	0.56	0.41
9	Alexander's Inc.	ALX	Equity	Shopping Centers		1,546.5	3.26		0.23
10	Acadia Realty Trust	AKR	Equity	Shopping Centers	S&P 600	1,313.3	2.77	0.27	0.20
11	Ramco-Gershenson Properties Trust	RPT	Equity	Shopping Centers		931.7	1.96		0.14
12	Inland Real Estate Corp.	IRC	Equity	Shopping Centers	S&P 600	911.3	1.92	0.18	0.14
13	Saul Centers Inc.	BFS	Equity	Shopping Centers	S&P 600	886.8	1.87	0.18	0.13
14	Retail Opportunity Investments Corp.	ROIC	Equity	Shopping Centers		870.0	1.83		0.13
15	Excel Trust Inc.	EXL	Equity	Shopping Centers		596.7	1.26		0.09
16	Kite Realty Group Trust	KRG	Equity	Shopping Centers	S&P 600	554.8	1.17	0.11	0.08
17	Urstadt Biddle Properties Inc. CI A	UBA	Equity	Shopping Centers	S&P 600	494.0	1.04	0.10	0.07
18	Cedar Realty Trust Inc	CDR	Equity	Shopping Centers	S&P 600	412.8	0.87	0.08	0.06
19	AmREIT, Inc.	AMRE	Equity	Shopping Centers		320.5	0.67		0.05
20	Roberts Realty Investors Inc.	RPI	Equity	Shopping Centers		12.7	0.03		0.00
<b>20 Subsector Totals</b>						<b>47,492.5</b>	<b>100.00</b>	<b>7.09</b>	<b>7.06</b>
<b>12 S&amp;P Subsector Total</b>						<b>35,015.3</b>			
<b>Property Sector: Regional Malls</b>									
1	Simon Property Group Inc.	SPG	Equity	Regional Malls	S&P 500	51,111.1	55.63	10.36	7.60
2	General Growth Properties Inc.	GGP	Equity	Regional Malls		19,263.0	20.97		2.87
3	Macerich Co.	MAC	Equity	Regional Malls	S&P 500	8,867.8	9.65	1.80	1.32
4	Taubman Centers Inc.	TCO	Equity	Regional Malls	S&P 400	4,971.6	5.41	1.01	0.74
5	CBL & Associates Properties Inc.	CBL	Equity	Regional Malls		3,702.0	4.03		0.55
6	Glimcher Realty Trust	GRT	Equity	Regional Malls		1,658.7	1.81		0.25
7	Pennsylvania Real Estate Investment Trust	PEI	Equity	Regional Malls	S&P 600	1,322.8	1.44	0.27	0.20
8	Rouse Properties Inc.	RSE	Equity	Regional Malls		983.0	1.07		0.15
<b>8 Subsector Totals</b>						<b>91,880.0</b>	<b>100.00</b>	<b>13.43</b>	<b>13.67</b>
<b>4 S&amp;P Subsector Total</b>						<b>66,273.3</b>			
<b>Property Sector: Free Standing</b>									
1	Realty Income Corp.	O	Equity	Free Standing	S&P 400	8,124.1	53.78	1.65	1.21
2	National Retail Properties Inc.	NNN	Equity	Free Standing	S&P 400	3,947.0	26.13	0.80	0.59
3	Spirit Realty Capital Inc.	SRC	Equity	Free Standing		1,703.0	11.27		0.25
4	Getty Realty Corp.	GTY	Equity	Free Standing	S&P 600	699.9	4.63	0.14	0.10
5	Agree Realty Corp.	ADC	Equity	Free Standing		431.2	2.85		0.06
6	American Realty Capital Properties Inc.	ARCP	Equity	Free Standing		201.3	1.33		0.03
<b>6 Subsector Totals</b>						<b>15,106.5</b>	<b>100.00</b>	<b>2.59</b>	<b>2.25</b>
<b>3 S&amp;P Subsector Total</b>						<b>12,771.0</b>			
<b>34 Sector Totals</b>						<b>154,479.0</b>		<b>23.11</b>	<b>22.98</b>
<b>19 S&amp;P Sector Total</b>						<b>114,059.6</b>			

**REITs in the FTSE NAREIT All REITs Index and S&P Equity Indexes**

(Ranked by equity market capitalization)

May 31, 2013

<b>Property Sector: Residential</b>									
1	Equity Residential	EQR	Equity	Apartments	S&P 500	20,357.3	25.09	4.12	3.03
2	AvalonBay Communities Inc.	AVB	Equity	Apartments	S&P 500	17,162.4	21.15	3.48	2.55
3	UDR Inc.	UDR	Equity	Apartments	S&P 400	6,097.5	7.52	1.24	0.91
4	Camden Property Trust	CPT	Equity	Apartments	S&P 400	5,788.3	7.13	1.17	0.86
5	Essex Property Trust Inc.	ESS	Equity	Apartments	S&P 400	5,722.1	7.05	1.16	0.85
6	Apartment Investment & Management Co.	AIV	Equity	Apartments	S&P 500	4,404.2	5.43	0.89	0.66
7	American Campus Communities Inc.	ACC	Equity	Apartments	S&P 400	4,272.1	5.27	0.87	0.64
8	BRE Properties Inc.	BRE	Equity	Apartments	S&P 400	3,834.1	4.73	0.78	0.57
9	Home Properties Inc.	HME	Equity	Apartments	S&P 400	3,114.5	3.84	0.63	0.46
10	Mid-America Apartment Communities Inc.	MAA	Equity	Apartments	S&P 600	2,872.9	3.54	0.58	0.43
11	Post Properties Inc.	PPS	Equity	Apartments	S&P 600	2,590.5	3.19	0.52	0.39
12	Colonial Properties Trust	CLP	Equity	Apartments	S&P 600	1,948.2	2.40	0.39	0.29
13	Education Realty Trust Inc.	EDR	Equity	Apartments		1,182.2	1.46		0.18
14	Associated Estates Realty Corp.	AEC	Equity	Apartments		813.2	1.00		0.12
15	Campus Crest Communities Inc.	CCG	Equity	Apartments		772.6	0.95		0.11
16	Trade Street Residential Inc	TSRE	Equity	Apartments		107.9	0.13		0.02
17	Preferred Apartment Communities Inc.	APTS	Equity	Apartments		94.1	0.12		0.01
<b>17 Subsector Totals</b>						<b>81,134.2</b>	<b>100.00</b>	<b>15.84</b>	<b>12.07</b>
<b>12 S&amp;P Subsector Total</b>						<b>78,164.3</b>			
<b>Property Sector: Manufactured Homes</b>									
1	Equity Lifestyle Properties Inc.	ELS	Equity	Manufactured Homes		3,187.9	61.82		0.47
2	Sun Communities Inc.	SUI	Equity	Manufactured Homes		1,792.1	34.75		0.27
3	UMH Properties Inc.	UMH	Equity	Manufactured Homes		176.9	3.43		0.03
<b>3 Subsector Totals</b>						<b>5,156.9</b>	<b>100.00</b>	<b>0.00</b>	<b>0.77</b>
<b>0 S&amp;P Subsector Total</b>						<b>0.0</b>			
<b>20 Sector Totals</b>						<b>86,291.1</b>		<b>15.84</b>	<b>12.83</b>
<b>12 S&amp;P Sector Total</b>						<b>78,164.3</b>			
<b>Property Sector: Diversified</b>									
1	Vornado Realty Trust	VNO	Equity		S&P 500	14,882.1	29.20	3.02	2.21
2	Digital Realty Trust Inc.	DLR	Equity			7,513.5	14.74		1.12
3	W.P. Carey Inc.	WPC	Equity			4,665.5	9.15		0.69
4	Corrections Corp. of America	CXW	Equity		S&P 400	3,974.6	7.80	0.81	0.59
5	Lexington Realty Trust	LXP	Equity		S&P 600	2,673.6	5.25	0.54	0.40
6	Geo Group Inc.	GEO	Equity		S&P 600	2,480.4	4.87	0.50	0.37
7	EPR Properties	EPR	Equity		S&P 600	2,437.4	4.78	0.49	0.36
8	Washington Real Estate Investment Trust	WRE	Equity			1,833.2	3.60		0.27
9	Dupont Fabros Technology Inc.	DFT	Equity			1,532.1	3.01		0.23
10	Cousins Properties Inc.	CUZ	Equity		S&P 600	1,282.0	2.52	0.26	0.19
11	American Assets Trust Inc.	AAT	Equity			1,264.9	2.48		0.19
12	Select Income REIT	SIR	Equity			1,069.7	2.10		0.16
13	Investors Real Estate Trust	IRET	Equity			841.4	1.65		0.13
14	CapLease Inc.	LSE	Equity			756.2	1.48		0.11
15	CoreSite Realty Corp.	COR	Equity		S&P 600	674.2	1.32	0.14	0.10
16	Silver Bay Realty Trust Corp.	SBY	Equity			665.8	1.31		0.10
17	American Residential Properties Inc.	ARPI	Equity			633.5	1.24		0.09
18	CyrusOne Inc.	CONE	Equity			423.4	0.83		0.06
19	Winthrop Realty Trust	FUR	Equity			407.5	0.80		0.06
20	One Liberty Properties Inc.	OLP	Equity			396.9	0.78		0.06
21	Whitestone REIT	WSR	Equity			276.4	0.54		0.04
22	Armada Hoffer Properties Inc.	AHH	Equity			169.2	0.33		0.03
23	Gladstone Land Corp.	LAND	Equity			93.0	0.18		0.01
24	HMG/Courtland Properties Inc.	HMG	Equity			17.4	0.03		0.00
<b>24 Sector Totals</b>						<b>50,964.1</b>	<b>100.00</b>	<b>5.75</b>	<b>7.58</b>
<b>7 S&amp;P Sector Total</b>						<b>28,404.3</b>			
<b>Property Sector: Lodging/Resorts</b>									
1	Host Hotels & Resorts Inc.	HST	Equity		S&P 500	12,793.7	35.25	2.59	1.90
2	Hospitality Properties Trust	HPT	Equity		S&P 400	4,077.5	11.23	0.83	0.61
3	RLJ Lodging Trust	RLJ	Equity			2,842.5	7.83		0.42
4	LaSalle Hotel Properties	LHO	Equity		S&P 600	2,520.2	6.94	0.51	0.37
5	Ryman Hospitality Properties Inc.	RHP	Equity			2,148.2	5.92		0.32
6	Sunstone Hotel Investors Inc.	SHO	Equity			1,914.9	5.28		0.28
7	DiamondRock Hospitality Co.	DRH	Equity		S&P 600	1,855.8	5.11	0.38	0.28
8	Strategic Hotels & Resorts Inc.	BEE	Equity			1,642.3	4.52		0.24
9	Pebblebrook Hotel Trust	PEB	Equity			1,594.6	4.39		0.24
10	Hersha Hospitality Trust Cl A	HT	Equity			1,134.5	3.13		0.17
11	Chesapeake Lodging Trust	CHSP	Equity			1,095.3	3.02		0.16
12	Ashford Hospitality Trust	AHT	Equity			897.7	2.47		0.13
13	FelCor Lodging Trust Inc.	FCH	Equity			766.8	2.11		0.11
14	Summit Hotel Properties Inc.	INN	Equity			623.1	1.72		0.09
15	Chatham Lodging Trust	CLDT	Equity			322.9	0.89		0.05
16	Sotherly Hotels Inc.	SOHO	Equity			43.7	0.12		0.01
17	Supertel Hospitality Inc.	SPPR	Equity			21.7	0.06		0.00
<b>17 Sector Totals</b>						<b>36,295.5</b>	<b>100.00</b>	<b>4.30</b>	<b>5.40</b>
<b>4 S&amp;P Sector Total</b>						<b>21,247.2</b>			
<b>Property Sector: Self Storage</b>									
1	Public Storage	PSA	Equity		S&P 500	25,832.5	75.05	5.23	3.84
2	Extra Space Storage Inc.	EXR	Equity		S&P 400	4,587.9	13.33	0.93	0.68
3	CubeSmart	CUBE	Equity			2,023.6	5.88		0.30
4	Sovran Self Storage Inc.	SSS	Equity		S&P 600	1,974.2	5.74	0.40	0.29
<b>4 Sector Totals</b>						<b>34,418.2</b>	<b>100.00</b>	<b>6.56</b>	<b>5.12</b>
<b>3 S&amp;P Sector Total</b>						<b>32,394.6</b>			

**REITs in the FTSE NAREIT All REITs Index and S&P Equity Indexes**

(Ranked by equity market capitalization)

May 31, 2013

Property Sector: Health Care								
1	HCP Inc.	HCP	Equity	S&P 500	21,457.5	27.14	4.35	3.19
2	Ventas Inc.	VTR	Equity	S&P 500	20,999.1	26.56	4.25	3.12
3	Health Care REIT Inc.	HCN	Equity	S&P 500	17,621.5	22.29	3.57	2.62
4	Senior Housing Properties Trust	SNH	Equity	S&P 400	4,861.2	6.15	0.98	0.72
5	Omega Healthcare Investors Inc.	OHI	Equity	S&P 400	3,631.5	4.59	0.74	0.54
6	Healthcare Realty Trust Inc.	HR	Equity	S&P 600	2,320.6	2.94	0.47	0.35
7	Medical Properties Trust Inc.	MPW	Equity	S&P 600	2,222.0	2.81	0.45	0.33
8	National Health Investors Inc.	NHI	Equity		1,728.7	2.19		0.26
9	LTC Properties Inc.	LTC	Equity	S&P 600	1,423.6	1.80	0.29	0.21
10	Aviv REIT Inc.	AVIV	Equity		1,224.8	1.55		0.18
11	Sabra Healthcare REIT Inc.	SBRA	Equity	S&P 600	997.3	1.26	0.20	0.15
12	Universal Health Realty Income Trust	UHT	Equity	S&P 600	571.6	0.72	0.12	0.09
<b>12</b>	<b>Sector Totals</b>				<b>79,059.3</b>	<b>100.00</b>	<b>15.42</b>	<b>11.76</b>
<b>10</b>	<b>S&amp;P Sector Total</b>				<b>76,105.8</b>			
Property Sector: Timber								
1	Weyerhaeuser Co.	WY	Equity	S&P 500	16,148.5	49.65	3.27	2.40
2	Plum Creek Timber Company Inc.	PCL	Equity	S&P 500	7,765.9	23.88	1.57	1.16
3	Rayonier Inc. REIT	RYN	Equity	S&P 400	6,783.8	20.86	1.37	1.01
4	Potlatch Corp.	PCH	Equity	S&P 400	1,823.6	5.61	0.37	0.27
<b>4</b>	<b>Sector Totals</b>				<b>32,521.8</b>	<b>100.00</b>	<b>6.59</b>	<b>4.84</b>
<b>4</b>	<b>S&amp;P Sector Total</b>				<b>32,521.8</b>			
Property Sector: Infrastructure								
1	American Tower Corp	AMT	Equity	S&P 500	30,873.7	99.95	6.26	4.59
2	Power REIT	PW	Equity		15.3	0.05		0.00
<b>2</b>	<b>Sector Totals</b>				<b>30,889.0</b>	<b>100.00</b>	<b>6.26</b>	<b>4.59</b>
<b>1</b>	<b>S&amp;P Sector Total</b>				<b>30,873.7</b>			
Investment Sector: Mortgage								
1	Annaly Capital Management Inc.	NLY	Mortgage	Home Financing	13,160.0	25.83		1.96
2	American Capital Agency Corp.	AGNC	Mortgage	Home Financing	10,034.9	19.69		1.49
3	Two Harbors Investment Corp.	TWO	Mortgage	Home Financing	3,868.5	7.59		0.58
4	Chimera Investment Corp.	CIM	Mortgage	Home Financing	3,132.5	6.15		0.47
5	MFA Financial Inc.	MFA	Mortgage	Home Financing	3,126.2	6.13		0.46
6	Hatteras Financial Corp.	HTS	Mortgage	Home Financing	2,551.3	5.01		0.38
7	Invesco Mortgage Capital Inc.	IVR	Mortgage	Home Financing	2,488.7	4.88		0.37
8	Armour Residential REIT Inc.	ARR	Mortgage	Home Financing	1,930.1	3.79		0.29
9	CYS Investments Inc	CYS	Mortgage	Home Financing	1,798.5	3.53		0.27
10	Redwood Trust Inc.	RWT	Mortgage	Home Financing	1,562.0	3.07		0.23
11	PennyMac Mortgage Investment Trust	PMT	Mortgage	Home Financing	1,275.3	2.50		0.19
12	American Capital Mortgage Investment Corp.	MTGE	Mortgage	Home Financing	1,179.2	2.31		0.18
13	Capstead Mortgage Corp.	CMO	Mortgage	Home Financing	1,173.1	2.30		0.17
14	Anworth Mortgage Asset Corp.	ANH	Mortgage	Home Financing	803.6	1.58		0.12
15	AG Mortgage Investment Trust Inc.	MITT	Mortgage	Home Financing	616.1	1.21		0.09
16	Apollo Residential Mortgage Inc.	AMTG	Mortgage	Home Financing	591.0	1.16		0.09
17	Dynex Capital Inc.	DX	Mortgage	Home Financing	552.7	1.08		0.08
18	Western Asset Mortgage Capital Corp	WMC	Mortgage	Home Financing	443.0	0.87		0.07
19	Javelin Mortgage Investment Corp.	JMI	Mortgage	Home Financing	207.8	0.41		0.03
20	Ellington Residential Mortgage REIT	EARN	Mortgage	Home Financing	177.2	0.35		0.03
21	ZAIS Financial Corp.	ZFC	Mortgage	Home Financing	142.5	0.28		0.02
22	Five Oaks Investment Corp.	OAKS	Mortgage	Home Financing	102.9	0.20		0.02
23	Orchid Island Capital Inc	ORC	Mortgage	Home Financing	40.2	0.08		0.01
<b>23</b>	<b>Subsector Totals</b>				<b>50,957.1</b>	<b>100.00</b>	<b>0.00</b>	<b>7.58</b>
<b>0</b>	<b>S&amp;P Subsector Total</b>				<b>0.0</b>			
1	Starwood Property Trust Inc.	STWD	Mortgage	Commercial Financing	4,115.0	27.60		0.61
2	New Residential Investment Corp.	NRZ	Mortgage	Commercial Financing	1,730.7	11.61		0.26
3	Northstar Realty Finance Corp.	NRF	Mortgage	Commercial Financing	1,670.0	11.20		0.25
4	Colony Financial Inc.	CLNY	Mortgage	Commercial Financing	1,430.7	9.60		0.21
5	Newcastle Investment Corp.	NCT	Mortgage	Commercial Financing	1,280.3	8.59		0.19
6	iStar Financial Inc.	SFI	Mortgage	Commercial Financing	1,004.7	6.74		0.15
7	Resource Capital Corp.	RSO	Mortgage	Commercial Financing	770.9	5.17		0.11
8	Blackstone Mortgage Trust, Inc. Shs -A-	BXMT	Mortgage	Commercial Financing	670.5	4.50		0.10
9	Apollo Commercial Real Estate Finance Inc.	ARI	Mortgage	Commercial Financing	614.6	4.12		0.09
10	RAIT Financial Trust	RAS	Mortgage	Commercial Financing	536.4	3.60		0.08
11	Arbor Realty Trust Inc.	ABR	Mortgage	Commercial Financing	292.0	1.96		0.04
12	Gramercy Property Trust Inc.	GPT	Mortgage	Commercial Financing	274.5	1.84		0.04
13	Hannon Armstrong Sustainable Infrastructure C	HASI	Mortgage	Commercial Financing	174.1	1.17		0.03
14	Ares Commercial Real Estate Corp.	ACRE	Mortgage	Commercial Financing	149.7	1.00		0.02
15	BRT Realty Trust	BRT	Mortgage	Commercial Financing	107.0	0.72		0.02
16	PMC Commercial Trust	PCC	Mortgage	Commercial Financing	89.4	0.60		0.01
<b>16</b>	<b>Subsector Totals</b>				<b>14,910.6</b>	<b>100.00</b>	<b>0.00</b>	<b>2.22</b>
<b>0</b>	<b>S&amp;P Subsector Total</b>				<b>0.0</b>			
<b>39</b>	<b>Sector Totals</b>				<b>65,867.7</b>		<b>0.00</b>	<b>9.80</b>
<b>0</b>	<b>S&amp;P Sector Total</b>				<b>0.0</b>			
<b>17</b>	<b>S&amp;P 500 Large Cap</b>				<b>313,731.6</b>		<b>63.56</b>	<b>46.66</b>
<b>29</b>	<b>S&amp;P 400 Mid Cap</b>				<b>131,754.1</b>		<b>26.69</b>	<b>19.60</b>
<b>30</b>	<b>S&amp;P 600 Small Cap</b>				<b>48,075.6</b>		<b>9.74</b>	<b>7.15</b>
<b>76</b>	<b>S&amp;P Index Total</b>				<b>493,561.3</b>		<b>100.00</b>	<b>73.41</b>
<b>187</b>	<b>Industry Total</b>				<b>672,317.3</b>			<b>100.00</b>

<sup>1</sup> Equity market capitalization does not include operating partnership units or preferred stock.

**U.S. REIT Merger and Acquisition Activity**  
Enterprise Value in Millions of Dollars  
(2004 - 2012)

Year	Acquiror	Target	Acquiror Type	Enterprise Value	Announced	Completed	Status
<b>2004</b>	Ventas, Inc.	ElderTrust	Public REIT	191	19-Nov-03	5-Feb-04	Closed
	Aslan Realty Partners, LLC	Great Lakes REIT	Private Real Estate Company	252	21-Jan-04	27-Apr-04	Closed
	ProLogis/Eaton Vance Corporation	Keystone Property Trust	Public REIT/Investment Advisor	729	3-May-04	4-Aug-04	Closed
	Simon Property Group	Chelsea Property Group	Public REIT	3,000	21-Jun-04	14-Oct-04	Closed
	General Growth Properties, Inc.	The Rouse Company	Public REIT	7,000	19-Aug-04	12-Nov-04	Closed
	PL Retail LLC (Kimco Realty & DRA Advisors)	Price Legacy Corporation	Public REIT/Investment Advisor	3,500	24-Aug-04	21-Dec-04	Closed
	Total Public to Public			14,420	98%		
	Total Public to Private			252	2%		
	<b>Total</b>			<b>14,672</b>			
	<b>2005</b>	Camden Property Trust	Summit Property Group	Public REIT	1,100	24-Oct-04	28-Feb-05
iStar Financial, Inc.		Falcon Financial Investment Trust	Public REIT	120	20-Jan-05	2-Mar-05	Closed
Colonial Properties Trust		Cornerstone Realty Income Trust	Public REIT	566	25-Oct-04	1-Apr-05	Closed
Centro Properties Limited		Kramont Realty Trust	Australian LPT	120			Closed
The Lightstone Group		Prime Group Realty Trust	Private Real Estate Company	1,500	17-Feb-05	1-Jul-05	Closed
ProLogis		Catellus Development Corporation	Public REIT	3,819	6-Jun-05	15-Sep-05	Closed
DRA Advisors LLC		CRT Properties, Inc.	Investment Advisor	890	17-Jun-05		Closed
ING Clarion		Gables Residential Trust	Private Equity Joint Venture	4,900	7-Jun-05	30-Sep-05	Closed
DRA Advisors LLC		Capital Automotive REIT	Investment Advisor	1,800	2-Sep-05	16-Dec-05	Closed
Total Public to Public				5,725	39%		
Total Public to Private			9,090	61%			
<b>Total</b>			<b>14,815</b>				
<b>2006</b>	Brandywine Realty Trust	Prentiss Properties Trust	Public REIT	1,921	3-Oct-05	4-Jan-06	Closed
	CDP Capital-Financing Inc.	Criimi Mae Inc.	Investment Advisor/Pension Fund	1,700		19-Jan-06	Closed
	Morgan Stanley Property Fund	AMLI Residential Properties	Investment Advisor/Brokerage Firm	2,100	23-Oct-05	7-Feb-06	Closed
	Duke Realty Corporation	The Mark Winkler Company	Public REIT	855	2-Mar-06	4-Mar-06	Closed
	CalEast Industrial Investors	CenterPoint Properties Trust	Real Estate Operating Partnership	2,436	7-Dec-05	8-Mar-06	Closed
	Morgan Stanley Real Estate and Onex Real Estate	Town and Country Trust	Private Real Estate Joint Venture	1,500	19-Dec-05	31-Mar-06	Closed
	Kimco Realty Corporation	Atlantic Realty Trust	Public REIT	83	1-Dec-05	31-Mar-06	Closed
	Host Marriott Corporation	Starwood Hotels and Resorts	Public REIT	4,040	14-Nov-05	7-Apr-06	Closed
	GE Real Estate, Inc. & Trizec Properties	Arden Realty Trust	Public non-REIT and REIT	3,032	21-Dec-05	2-May-06	Closed
	Blackstone Group LP	MeriStar Hospitality Corporation	Private Equity Firm	2,600	20-Feb-06	2-May-06	Closed
	LBA Realty LLC	Bedford Property Investors	Private Real Estate Company	432	10-Feb-06	5-May-06	Closed
	Spirit Finance Corporation	Sun Capital Partners, Inc. (ShopKo Stores)	Public REIT	815	10-May-06	2-Jun-06	Closed
	Mack-Cali Realty Corporation	Gale Real Estate Services Corp.	Public REIT	545	16-Feb-06	5-Jun-06	Closed
	Blackstone Group LP	CarrAmerica Realty Corp.	Private Equity Firm	5,600	6-Mar-06	13-Jul-06	Closed
	Archstone-Smith	Deutsche WohnAnlage GmbH	Public REIT	649	29-Jun-06	31-Jul-06	Closed
	Public Storage Inc.	Shurgard Storage Centers Inc.	Public REIT	3,200	7-Mar-06	23-Aug-06	Closed
	Westmont Hospitality and Cadim Inc. (Braveheart Holdir	Boykin Lodging Company	JV- Public Pension Fund	417	22-May-06	21-Sep-06	Closed
	Accredited Home Lenders Holding Co.	Aames Investment Corporation	Mortgage Banking Firm	340	14-Sep-06	1-Oct-06	Closed
	Brookfield Properties Corporation	Trizec Canada, Inc.	Real Estate Operating Company	2,670	5-Jun-06	5-Oct-06	Closed
	Blackstone Group LP and Brookfield Properties Co.	Trizec Properties, Inc.	JV- Private Equity Firm & REOC	6,500	5-Jun-06	5-Oct-06	Closed
	Health Care Property Investors	CNL Retirement Properties	Public REIT	5,300	2-May-06	6-Oct-06	Closed
	Centro Watt	Heritage Property Investment Trust Inc.	JV - Australian LPT & Private Equity Firm	3,200	9-Jul-06	19-Oct-06	Closed
	Kimco Realty Corporation	Pan Pacific Retail Properties	Public REIT	4,000	10-Jul-06	31-Oct-06	Closed
	Morguard Corporation	Sizeler Property Investors, Inc.	Canadian REIT	324	7-Aug-06	10-Nov-06	Closed
	Morgan Stanley	Glenborough Realty Trust, Inc.	Brokerage Firm	1,900	21-Aug-06	29-Nov-06	Closed
	Health Care REIT	Windrose Medical Properties Trust	Public REIT	877	13-Sep-06	20-Dec-06	Closed
	Koll/PER LLC	AmeriVest Properties	Real Estate Operating Partnership	273	18-Jul-06	29-Dec-06	Closed
	Lexington Corporate Properties	Newkirk Realty Trust, Inc.	Public REIT	1,080	25-Jul-06	3-Jan-07	Closed
	SL Green Realty Corp.	Reckson Associates Realty Corp.	Public REIT	6,000	3-Aug-06	25-Jan-07	Closed
	Morgan Stanley	Saxon Capital	Brokerage Firm	706	8-Aug-06	4-Dec-06	Closed
	Babcock & Brown Real Estate Investments	BNP Residential Properties Inc.	Investment Advisor/Brokerage Firm	766	31-Aug-06	28-Feb-07	Closed
	Hospitality Properties Trust	TravelCenters of America Inc.	Public REIT	1,900	1-Sep-06	31-Jan-07	Closed
	Geo Group	CentraCore Properties Trust	Correctional Facility Operator	428	19-Sep-06	24-Jan-07	Closed
	Crown Castle International Corporation	Global Signal Inc.	Public Tower Company	4,000	16-Oct-06	12-Jan-07	Closed
	Developers Diversified Realty Corp.	Inland Retail Real Estate Trust, Inc.	Public REIT	6,200	23-Oct-06	27-Feb-07	Closed
	Record Realty Trust	Government Properties Trust, Inc.	Australian LPT	223	24-Oct-06	13-Apr-07	Closed
	GE Capital Solutions	Truststreet Properties, Inc.	Financial Lending Company	3,000	30-Oct-06	27-Feb-07	Closed
	JP Morgan-Special Situation Property Fund	Columbia Equity Trust	Pension Trust Fund	502	6-Nov-06	1-Mar-07	Closed
	National HealthCare Corporation	National Health Realty	Health Care Provider (Public Company)	268	21-Dec-06	31-Oct-07	Closed
	Total Public to Public			47,182	57%		
Total Public to Private			35,200	43%			
<b>Total</b>			<b>82,381</b>				



**U.S. REIT Merger and Acquisition Activity**  
 Enterprise Value in Millions of Dollars  
 (2004 - 2012)

Year	Acquiror	Target	Acquiror Type	Enterprise Value	Announced	Completed	Status	
<b>2007</b>	Ventas, Inc.	Sunrise Senior Living REIT	Public REIT	1,036	14-Jan-07	26-Apr-07	Closed	
	Simon Property Group; Farallon Capital Management	Mills Corporation	Public REIT; Investment Advisor	1,350	17-Jan-07	3-Apr-07	Closed	
	Morgan Stanley	CNL Hotels & Resorts Inc.	Brokerage Firm	6,702	19-Jan-07	12-Apr-07	Closed	
	Brookfield Asset Management Inc.	Longview Fibre	Asset Management Firm	2,150	5-Feb-07	20-Apr-07	Closed	
	Blackstone Group	Equity Office Properties Trust	Private Equity Firm	39,000	7-Feb-07	9-Feb-07	Closed	
	Credit-Based Asset Servicing and Securitization LLC (C	Fieldstone Investment Corporation	Mortgage Banking Firm	259	16-Feb-07	17-Jul-07	Closed	
	Centro Properties Group	New Plan Excel Realty Trust, Inc.	Australian LPT	6,200	27-Feb-07	20-Apr-07	Closed	
	Macquarie Bank Limited, Kaupthing Bank hf, et al.	Spirit Finance Corporation	Investment Advisor/Brokerage Firm	3,500	13-Mar-07	1-Aug-07	Closed	
	Inland American Real Estate Trust Inc.	Winston Hotels, Inc.	Asset Management Firm	460	3-Apr-07	2-Jul-07	Closed	
	Apollo Investment Corporation	Innkeepers USA Trust	Closed-End Investment Company	1,500	16-Apr-07	29-Jun-07	Closed	
	JER Partners	Highland Hospitality	Private Equity Firm	2,000	24-Apr-07	28-Jul-07	Closed	
	AP AIMCAP Holdings LLC	Eagle Hospitality Properties Trust, Inc.	Closed-End Investment Company	319	27-Apr-07	15-Aug-07	Closed	
	Morgan Stanley	Crescent Real Estate Equity	Brokerage Firm	6,500	23-May-07	3-Aug-07	Closed	
	Tishman Speyer/ Lehman Brothers	Archstone-Smith	Real Estate Company/ Brokerage Firm	22,200	29-May-07	5-Oct-07	Closed	
	Whitehall Street Global Real Estate, LP	Equity Inns, Inc.	Investment Advisor/Brokerage Firm	2,200	21-Jun-07	25-Oct-07	Closed	
	Sentinel Omaha LLC	America First Apartment Investors	Real Estate Advisory Firm	532	25-Jun-07	18-Sep-07	Closed	
	Liberty Property Trust	Republic Property Trust	Public REIT	850	24-Jul-07	4-Oct-07	Closed	
	Gramercy Capital Corp/New York	American Financial Realty Trust	Public REIT	1,094	5-Nov-07	1-Apr-08	Closed	
	Total Public to Public			10,530	11%			
	Total Public to Private			87,321	89%			
	<b>Total</b>			<b>97,851</b>				
	<b>2008</b>	American Campus Communities	GMH Communities Trust	Public REIT	1,400	12-Feb-08	11-Jun-08	Closed
		Hypo Real Estate Bank AG	Quadra Realty Trust	Brokerage Firm	179	29-Jan-08	14-Mar-08	Closed
Boston Properties		Macklowe Properties (NYC Office Portfolio)	Public REIT	3,950	24-May-08	10-Jun-08	Closed	
American Land Lease		Green Courte Real Estate Partners	Private Equity Firm	113	10-Dec-08	16-Mar-09	Closed	
Total Public to Public				5,350	95%			
Total Public to Private			292	5%				
<b>Total</b>			<b>5,642</b>					
<b>2009</b>			<i>No Deals</i>					
<b>2010</b>	Brookfield Asset Management Inc.	Crystal River Capital, Inc.	Asset Management Firm	14	24-Feb-10	30-Jul-10	Closed	
	Tiptree Financial Partners, LP	Care Investment Trust, Inc.	Real Estate Advisory Firm	97	16-Mar-10	13-Aug-10	Closed	
	HCP, Inc.	HCR ManorCare, Inc.	Public REIT	6,080	14-Dec-10	8-Apr-11	Closed	
	Total Public to Public			6,080	98%			
Total Public to Private			111	2%				
<b>Total</b>			<b>6,191</b>					
<b>2011</b>	AMB Property Corp.	ProLogis	Public REIT	16,517	31-Jan-11	3-Jun-11	Closed	
	Ventas, Inc.	Nationwide Health Properties, Inc.	Public REIT	7,010	28-Feb-11	1-Jul-11	Closed	
	Ventas, Inc.	Cogdell Spencer, Inc.	Public REIT	635	27-Dec-11	2-Apr-12	Closed	
	Total Public to Public			24,162	100%			
Total Public to Private			0	0%				
<b>Total</b>			<b>24,162</b>					
<b>2012</b>	Realty Income Corp.	American Realty Capital Trust, Inc.	Public REIT	2,835	6-Sep-12		Pending	
	HCP, Inc.	Emeritus; Blackstone JV (Portfolio Acquisition)	Public REIT	1,730	16-Oct-12	31-Oct-12	Closed	
	AvalonBay Communities, Inc.; Equity Residential	Archstone-Smith Trust, Inc.	Public REIT	6,476	26-Nov-12		Pending	
	American Realty Capital Properties, Inc.	American Realty Capital Trust III, Inc.	Public REIT	1,575	17-Dec-13		Pending	
	Total Public to Public			12,616	100%			
Total Public to Private			0	0%				
<b>Total</b>			<b>12,616</b>					
<b>Industry Totals: 2004-2012</b>								
Total Public to Public			126,065	49%				
Total Public to Private			132,266	51%				
<b>Total</b>			<b>258,331</b>					

**Industrial/Office**

Name	Ticker	Share Price (\$)			FFO per Share		Price/FFO		FFO Growth (%)	FFO Payout (%)	Debt/EBITDA	Total Return (%)					Dividend Yield (%)	Equity Market Cap (\$M)	Implied Market Cap (\$M)	Debt Ratio (%)	Average Share Volume	Average Dollar Volume	Relative Liquidity	Long-Term Issuer Rating	
		31-May-2013	52 Week		2013	2014	2013	2014				2013-2014	2013: Q1	2013: Q1	Jul-13	QTD									YTD
<b>Office</b>																									
Alexandria Real Estate Equities Inc.	ARE	68.50	78.09	64.75	4.42	4.76	15.49	14.40	7.63	50.45	8.51	-5.87	-3.49	-0.35	3.21	4.23	-5.08	3.50	4,825.0	4,825.0	41.9	1,000	74,347	1.541	BBB-
BioMed Realty Trust Inc.	BMR	20.93	23.09	17.79	1.50	1.48	13.93	14.17	-1.69	57.32	5.30	-7.02	-3.10	9.44	21.43	11.85	0.94	4.49	3,849.7	3,911.1	42.7	1,613	36,027	0.936	BBB-
Boston Properties Inc.	BXP	106.58	116.07	100.03	5.08	5.62	20.99	18.97	10.65	61.32	8.49	-2.60	5.46	1.38	5.94	14.10	4.78	2.44	15,967.3	17,817.2	33.4	1,173	129,950	0.814	A-
Brandywine Realty Trust	BDN	14.16	15.94	11.07	1.40	1.44	10.10	9.82	2.82	42.86	7.58	-5.16	-3.67	18.79	32.14	12.74	1.17	4.24	2,021.0	2,047.2	57.6	1,251	19,123	0.946	BBB-
CommonWealth REIT	CWH	20.44	25.25	13.58	2.72	2.71	7.52	7.54	-0.25	29.41	6.25	-8.46	-7.89	32.53	24.26	-0.83	1.02	4.89	2,418.1	2,418.1	73.4	2,371	49,087	2.030	BB+
Corporate Office Properties Trust	OFC	26.63	29.75	21.52	1.85	1.99	14.36	13.35	7.54	61.11	7.94	-8.14	-0.19	7.71	26.59	-6.44	-2.15	4.13	2,151.5	2,259.8	48.0	624	17,841	0.829	BBB-
Douglas Emmett Inc.	DEI	25.49	28.18	21.71	1.46	1.52	17.50	16.75	4.48	48.65	9.08	-2.60	2.25	10.19	22.54	21.20	4.01	2.82	3,558.4	4,397.9	45.5	883	23,719	0.667	BBB-
Franklin Street Properties Corp.	FSP	13.62	15.27	9.98	1.04	1.11	13.12	12.27	6.94	76.00	6.26	-10.81	-5.65	13.69	48.51	9.89	4.60	5.58	1,333.9	1,333.9	37.8	1,096	15,579	1.168	BBB-
Government Properties Income Trust	GOV	24.31	27.09	21.58	2.15	2.19	11.29	11.11	1.63	78.18	3.50	-6.68	-3.95	4.88	21.96	3.70	-	7.08	1,328.4	1,328.4	26.4	427	11,096	0.835	BBB-
Healthcare Trust of America Inc	HTA	11.49	13.28	9.14	0.65	0.67	17.59	17.06	3.06	102.68	6.49	-7.93	-2.21	17.50	-	-	-	4.17	488.6	490.6	72.9	999	12,634	2.586	BBB-
Highwoods Properties Inc.	HIW	36.42	41.07	30.97	2.75	2.84	13.26	12.84	3.29	63.43	5.93	-10.28	-6.97	11.37	18.49	12.95	6.03	4.67	2,933.8	3,069.8	41.2	1,174	46,031	1.569	BBB-
Hudson Pacific Properties Inc.	HPP	21.59	23.99	16.33	0.98	1.13	22.14	19.11	15.90	0.00	5.60	-5.35	-0.74	3.09	38.29	-	-	2.32	1,224.1	1,275.6	33.7	200	4,622	0.378	BBB-
Kilroy Realty Corp.	KRC	52.91	59.58	42.47	2.53	2.75	20.92	19.26	8.62	56.45	7.25	-6.50	0.97	12.44	18.68	21.33	4.19	2.65	3,952.0	4,048.6	37.4	439	25,056	0.634	BBB-
Mack-Cali Realty Corp.	CLJ	26.50	29.33	24.31	2.47	2.49	10.71	10.65	0.63	71.43	6.43	-4.57	-5.90	4.90	3.88	-1.09	-0.84	6.79	2,326.7	2,648.5	46.8	725	20,073	0.863	BBB
MPG Office Trust Inc.	MPG	3.13	3.80	1.90	-0.25	-0.27	-12.52	-11.45	9.33	-	21.08	0.32	13.82	1.62	75.84	0.43	-27.57	0.00	178.7	179.2	90.5	616	1,927	1.078	BBB-
Parkway Properties Inc.	PKY	17.18	19.55	10.38	1.20	1.36	14.32	12.63	13.44	50.00	5.97	-5.76	-7.39	23.83	68.55	3.28	-10.66	3.49	1,153.0	1,153.0	53.8	284	5,272	0.457	BBB-
Piedmont Office Realty Trust Inc.	PDM	18.99	20.94	16.62	1.39	1.45	13.62	13.08	4.10	55.56	5.14	-6.51	-2.07	7.37	20.12	6.31	11.22	4.21	3,207.4	3,207.4	35.8	1,051	21,481	0.670	BBB
SL Green Realty Corp.	SLG	86.98	94.21	71.37	4.99	5.40	17.41	16.11	8.08	28.45	8.46	-4.10	1.01	13.91	17.66	12.88	-0.60	1.52	7,796.4	8,036.4	48.7	553	50,107	0.643	BB+
<b>AVERAGE</b>		<b>33.10</b>	<b>36.92</b>	<b>28.08</b>	<b>2.13</b>	<b>2.26</b>	<b>13.43</b>	<b>12.65</b>	<b>5.90</b>	<b>54.90</b>	<b>7.52</b>	<b>-6.00</b>	<b>-1.65</b>	<b>10.79</b>	<b>27.53</b>	<b>7.91</b>	<b>-0.60</b>	<b>3.83</b>	<b>3,373.0</b>	<b>3,580.4</b>	<b>48.2</b>	<b>915</b>	<b>31,332</b>	<b>1.036</b>	
<b>Industrial</b>																									
DCT Industrial Trust Inc.	DCT	7.38	8.33	5.94	0.44	0.46	16.72	15.95	4.83	63.64	7.58	-5.75	0.70	14.82	32.28	21.08	0.31	3.79	1,967.7	2,129.1	43.5	3,950	31,568	1.604	BBB-
EastGroup Properties Inc.	EGP	58.77	66.37	50.13	3.15	3.34	18.65	17.59	6.01	69.74	6.49	-6.82	0.98	10.23	23.32	22.23	9.75	3.61	1,741.7	1,741.7	34.0	179	11,398	0.654	BBB-
First Industrial Realty Trust Inc.	FR	16.89	18.71	11.99	1.02	1.12	16.56	15.08	9.80	0.00	6.62	-5.85	-1.40	20.56	42.29	36.27	-10.02	0.50	1,660.5	1,739.9	46.0	827	14,995	0.903	BB
Monmouth Real Estate Investment Corp. CI A	MNR	10.26	11.90	9.74	0.68	0.67	15.01	15.24	-1.46	71.43	4.58	-2.23	-6.71	1.81	6.90	19.91	16.10	5.85	422.7	422.7	39.1	152	1,638	0.387	BBB-
Prologis Inc.	PLD	40.30	44.77	30.90	1.63	1.79	24.77	22.50	10.08	36.84	4.20	-3.93	0.80	11.23	30.06	20.00	-3.58	2.78	18,497.8	18,621.4	36.2	3,046	130,628	0.706	BBB
STAG Industrial Inc.	STAG	22.00	23.92	14.12	1.28	1.44	17.14	15.28	12.13	93.10	5.69	-0.18	3.43	24.16	70.71	-	-	5.45	911.0	1,046.4	36.5	342	7,816	0.858	BBB-
Terreno Realty Corp.	TRNO	19.03	20.20	13.91	0.74	1.00	25.66	18.97	35.28	75.00	7.12	1.12	6.55	24.07	37.87	3.93	-	2.52	350.7	350.7	35.0	83	1,609	0.459	BBB-
<b>AVERAGE</b>		<b>24.95</b>	<b>27.74</b>	<b>19.53</b>	<b>1.28</b>	<b>1.40</b>	<b>19.22</b>	<b>17.23</b>	<b>10.95</b>	<b>58.54</b>	<b>6.04</b>	<b>-3.38</b>	<b>0.62</b>	<b>15.27</b>	<b>34.78</b>	<b>20.57</b>	<b>2.51</b>	<b>3.50</b>	<b>3,650.3</b>	<b>3,721.7</b>	<b>38.6</b>	<b>1,226</b>	<b>28,521</b>	<b>0.796</b>	
<b>Mixed</b>																									
Chambers Street Properties	CSG	9.23	10.00	9.23	-	-	-	-	-	100.00	2.00	-7.70	-7.70	-7.70	-	-	-	0.00	2,297.8	2,300.1	-	2,369	23,149	1.007	BBB-
Duke Realty Corp.	DRE	16.57	18.71	12.77	1.07	1.14	15.51	14.51	6.93	70.83	5.72	-5.20	-1.51	21.86	25.16	17.45	-2.28	4.10	5,330.0	5,403.2	53.1	2,342	42,093	0.790	BBB-
First Potomac Realty Trust	FPO	13.68	16.05	10.99	1.13	1.08	12.11	12.70	-4.69	46.88	7.98	-13.68	-6.87	12.97	20.43	3.05	2.03	4.39	790.3	825.8	59.1	527	7,994	1.012	BBB-
Gladstone Commercial Corp.	GOOD	19.54	20.98	16.38	1.54	1.58	12.73	12.37	2.93	101.35	9.08	2.71	1.61	12.43	33.91	15.68	12.15	7.68	244.9	244.9	68.4	111	2,222	0.908	BBB-
Liberty Property Trust	LRY	40.58	44.70	33.28	2.65	2.75	15.32	14.77	3.73	73.08	5.96	-5.61	2.09	14.74	23.23	16.01	9.54	4.68	4,761.5	4,912.3	37.2	630	27,184	0.571	BBB
PS Business Parks Inc.	PSB	76.31	85.72	63.59	4.85	4.98	15.74	15.33	2.71	36.67	1.79	-4.37	-3.31	18.12	18.82	15.61	9.36	2.31	1,841.2	2,398.7	14.3	85	6,990	0.380	BBB+
<b>AVERAGE</b>		<b>29.32</b>	<b>32.69</b>	<b>24.37</b>	<b>2.25</b>	<b>2.30</b>	<b>14.28</b>	<b>13.94</b>	<b>2.32</b>	<b>71.47</b>	<b>5.42</b>	<b>-5.64</b>	<b>-2.62</b>	<b>12.07</b>	<b>24.31</b>	<b>13.56</b>	<b>6.16</b>	<b>3.86</b>	<b>2,544.3</b>	<b>2,680.8</b>	<b>46.4</b>	<b>1,011</b>	<b>18,272</b>	<b>0.778</b>	

**Retail**

Name	Ticker	Share Price (\$)			FFO per Share		Price/FFO		FFO		Debt/EBITDA	Total Return (%)					Dividend Yield (%)	Equity Market Cap (\$M)	Implied Market Cap (\$M)	Debt Ratio (%)	Average Share Volume	Average Dollar Volume	Relative Liquidity	Long-Term Issuer Rating	
		31-May-2013	52 Week		2013	2014	2013	2014	2013-2014	2013: Q1		2013: Q1	May-13	QTD	YTD	1-Yr									3-Yr
<b>Shopping Centers</b>																									
Acadia Realty Trust	AKR	25.92	29.26	22.60	1.25	1.36	20.72	19.08	8.58	58.06	7.32	-9.21	-6.66	4.12	19.37	17.11	5.99	3.24	1,313.3	1,325.1	46.2	359	10,123	0.771	
Alexander's Inc.	ALX	304.39	461.26	286.71	17.08	18.49	17.82	16.46	8.26	65.79	8.18	-0.26	-6.82	-6.35	9.96	12.12	6.47	3.61	1,546.5	1,546.5	38.7	5	1,471	0.095	
AmREIT, Inc.	AMRE	19.68	19.97	14.00	0.99	1.11	20.13	17.96	12.07	76.92	3.50	4.58	2.16	17.22	-	-	-	4.02	320.5	320.5	72.7	195	3,703	1.155	
Cedar Realty Trust Inc	CDR	5.75	6.55	4.60	0.47	0.52	12.18	11.02	10.59	50.00	8.25	-9.60	-5.16	10.76	24.21	-0.44	-9.55	3.48	412.8	414.4	66.4	390	2,476	0.600	
DDR Corp	DDR	17.46	19.41	13.89	1.10	1.19	15.85	14.67	8.00	46.15	8.31	-4.80	0.23	12.36	29.78	17.56	-10.75	3.09	5,408.5	5,415.0	47.3	4,177	78,596	1.453	BB+
Equity One Inc.	EQY	23.33	26.45	19.62	1.20	1.27	19.40	18.31	5.96	70.97	6.89	-8.47	-2.67	12.07	22.38	16.11	5.82	3.77	2,761.5	2,763.6	38.1	433	11,062	0.401	BBB-
Excel Trust Inc.	EXL	13.96	15.23	11.27	0.85	0.92	15.75	14.48	8.77	73.86	5.92	-12.28	-2.12	6.76	20.55	7.93	-	5.09	596.7	613.4	42.0	202	2,989	0.501	
Federal Realty Investment Trust	FRT	107.75	117.96	99.61	4.58	4.89	23.50	22.04	6.61	64.04	5.30	-7.91	-0.27	4.31	12.70	16.98	9.75	2.71	6,963.4	6,998.0	24.5	353	40,557	0.582	A-
Inland Real Estate Corp.	IRC	10.27	11.87	7.56	0.90	0.95	11.41	10.87	5.00	67.86	7.27	-8.86	2.68	25.51	33.25	14.63	-1.32	5.55	911.3	911.3	49.3	933	10,558	1.159	
Kimco Realty Corp.	KIM	22.15	25.00	18.22	1.32	1.38	16.75	16.07	4.22	63.64	5.42	-6.85	-0.19	15.73	28.41	20.57	-6.04	3.79	9,989.2	9,025.4	36.1	3,827	91,782	1.021	BBB+
Kite Realty Group Trust	KRG	6.07	6.84	4.81	0.46	0.50	13.16	12.18	8.05	42.86	8.65	-8.03	-9.12	10.77	33.75	12.71	-9.27	3.95	554.8	595.7	61.3	634	4,141	0.746	
Ramco-Gershenson Properties Trust	RPT	15.61	17.68	12.00	1.12	1.16	13.90	13.46	3.31	54.27	6.88	-10.65	-7.08	18.52	37.54	19.42	0.06	4.31	931.7	968.2	50.8	328	5,615	0.603	
Regency Centers Corp.	REG	51.60	59.20	45.29	2.56	2.66	20.17	19.36	4.15	72.27	5.89	-7.54	-1.69	11.39	22.16	16.71	0.00	3.59	4,638.8	4,647.9	31.3	529	29,854	0.644	BBB
Retail Opportunity Investments Corp.	ROIC	14.04	15.75	11.87	0.80	0.91	17.46	15.50	12.69	78.95	5.76	-5.13	0.25	10.57	20.92	17.17	10.98	4.27	870.0	870.0	30.6	553	8,371	0.962	
Retail Properties of America Inc.	RPAI	15.26	16.03	9.21	0.85	0.97	17.95	15.71	14.31	87.17	7.17	-0.33	3.11	28.93	76.48	-	-	4.34	2,790.6	2,790.6	61.0	1,127	17,429	0.625	
Roberts Realty Investors Inc.	RPI	1.19	1.62	1.12	-	-	-	-	-	-	5.91	-3.44	-6.51	4.27	-6.87	-14.43	-23.55	0.00	12.7	15.0	46.9	3	4	0.030	
Saul Centers Inc.	BFS	44.79	47.83	40.59	2.34	2.74	19.18	16.38	17.13	97.30	6.58	-0.02	3.23	6.40	15.23	9.01	1.60	3.22	886.8	1,196.5	42.0	26	1,162	0.131	
Tanger Factory Outlet Centers Inc.	SKT	34.48	38.57	30.93	1.81	2.00	19.08	17.24	10.66	50.00	5.31	-7.11	-4.12	2.04	14.04	21.64	16.39	2.61	3,237.1	3,401.3	24.4	665	24,662	0.762	BBB+
Urstadt Biddle Properties Inc. CI A	UBA	21.06	23.05	18.12	0.98	1.28	21.58	16.44	31.31	-	3.28	-5.43	-2.09	9.63	24.29	13.75	10.09	4.75	494.0	494.0	23.5	62	1,393	0.282	
Weingarten Realty Investors	WRI	31.88	35.84	25.27	1.91	1.99	16.69	16.01	4.26	57.55	5.05	-6.43	1.05	20.27	30.02	20.48	4.79	3.83	3,852.3	3,901.9	41.5	859	29,623	0.769	BBB
<b>AVERAGE</b>		<b>39.31</b>	<b>49.77</b>	<b>34.86</b>	<b>2.24</b>	<b>2.44</b>	<b>17.51</b>	<b>15.96</b>	<b>9.68</b>	<b>65.43</b>	<b>6.34</b>	<b>-5.89</b>	<b>-2.09</b>	<b>11.26</b>	<b>24.64</b>	<b>13.27</b>	<b>0.67</b>	<b>3.66</b>	<b>2,374.6</b>	<b>2,410.7</b>	<b>43.7</b>	<b>783</b>	<b>18,779</b>	<b>0.665</b>	
<b>Regional Malls</b>																									
CBL & Associates Properties Inc.	CBL	22.99	26.58	18.28	2.23	2.30	10.29	10.00	2.93	41.51	6.89	-4.76	-2.58	9.45	37.36	23.12	6.26	4.00	3,702.0	4,381.3	53.7	1,813	45,644	1.233	
General Growth Properties Inc.	GGP	20.53	23.33	17.10	1.11	1.23	18.47	16.76	10.21	-	11.01	-9.64	3.85	4.01	25.33	27.10	-6.40	2.34	19,263.0	19,394.5	46.7	4,255	95,124	0.494	
Glimcher Realty Trust	GRT	11.68	13.27	9.63	0.65	0.78	17.93	14.89	20.43	100.00	8.14	-6.86	0.69	6.23	31.80	24.30	8.23	3.42	1,658.7	1,658.7	49.4	692	8,817	0.532	BB-
Macerich Co.	MAC	64.91	70.84	54.68	3.42	3.58	18.96	18.13	4.55	67.44	8.11	-6.57	1.66	13.33	18.12	20.88	5.13	3.57	8,867.8	9,523.0	40.0	2,490	171,870	1.938	
Pennsylvania Real Estate Investment Trust	PEI	19.89	22.11	13.61	1.92	2.03	10.34	9.81	5.45	43.90	9.12	-3.19	3.50	14.90	63.05	18.28	2.96	3.62	1,322.8	1,368.6	64.1	1,140	23,960	1.811	
Rouse Properties Inc.	RSE	20.11	22.17	13.02	-	-	-	-	-	-	41.35	6.12	11.88	20.15	60.54	-	-	1.69	983.0	983.0	59.2	170	3,503	0.356	
Simon Property Group Inc.	SPG	166.44	180.34	146.73	8.67	9.35	19.19	17.80	7.78	56.10	6.02	-5.93	5.64	6.70	15.96	28.62	15.41	2.76	51,111.1	59,758.1	28.5	1,290	228,300	0.447	A
Taubman Centers Inc.	TCO	80.58	88.95	73.10	3.65	3.90	22.08	20.68	6.79	55.56	6.08	-5.77	3.76	3.03	13.13	29.73	12.89	2.48	4,971.6	7,014.0	29.2	441	37,898	0.762	
<b>AVERAGE</b>		<b>50.89</b>	<b>55.95</b>	<b>43.27</b>	<b>3.10</b>	<b>3.31</b>	<b>16.75</b>	<b>15.44</b>	<b>8.31</b>	<b>60.75</b>	<b>12.09</b>	<b>-4.57</b>	<b>3.55</b>	<b>9.73</b>	<b>33.16</b>	<b>24.58</b>	<b>6.35</b>	<b>2.99</b>	<b>11,485.0</b>	<b>13,013.5</b>	<b>46.4</b>	<b>1,536</b>	<b>76,890</b>	<b>0.947</b>	
<b>Free Standing</b>																									
Agree Realty Corp.	ADC	33.33	33.85	21.47	2.13	2.28	15.68	14.60	7.36	81.63	4.57	10.84	10.73	26.25	69.84	19.98	14.01	4.92	431.2	442.7	28.5	152	4,876	1.131	
American Realty Capital Properties Inc.	ARCP	15.22	17.82	10.00	0.94	1.15	16.28	13.29	22.46	140.10	-	-6.98	4.77	17.97	50.10	-	-	5.91	201.3	226.0	-	3,485	59,086	29.349	
Getty Realty Corp.	GTY	20.96	22.74	16.36	0.99	1.18	21.10	17.76	18.79	50.00	3.97	-2.10	3.71	17.22	34.27	3.33	11.21	2.74	699.9	699.9	22.2	75	1,641	0.234	
National Retail Properties Inc.	NNN	35.87	41.89	26.95	1.88	1.98	19.06	18.14	5.10	84.04	4.83	-9.60	0.17	17.56	42.10	24.32	16.86	4.40	3,947.0	3,947.0	29.8	1,202	48,103	1.219	BBB
Realty Income Corp.	O	45.45	55.09	37.46	2.37	2.50	19.20	18.19	5.58	95.11	5.45	-10.48	0.97	15.27	24.09	19.02	19.85	4.78	8,124.1	8,124.1	38.8	1,819	93,809	1.155	BBB
Spirit Realty Capital Inc.	SRC	20.07	22.75	15.00	1.39	1.48	14.41	13.56	6.22	128.04	8.73	-6.78	5.63	14.76	-	-	-	3.22	1,703.0	1,703.0	56.0	1,587	34,498	2.026	B
<b>AVERAGE</b>		<b>28.48</b>	<b>32.36</b>	<b>21.21</b>	<b>1.62</b>	<b>1.76</b>	<b>17.62</b>	<b>15.92</b>	<b>10.92</b>	<b>96.49</b>	<b>5.51</b>	<b>-4.19</b>	<b>4.33</b>	<b>18.17</b>	<b>44.08</b>	<b>16.66</b>	<b>15.48</b>	<b>4.33</b>	<b>2,517.7</b>	<b>2,523.8</b>	<b>35.1</b>	<b>1,386</b>	<b>40,336</b>	<b>5.852</b>	

**Residential**

Name	Ticker	Share Price (\$)			FFO per Share		Price/FFO		FFO Growth (%)	FFO Payout (%)	Debt/ EBITDA	Total Return (%)					Dividend Yield (%)	Equity Market Cap (\$M)	Implied Market Cap (\$M)	Debt Ratio (%)	Average Share Volume	Average Dollar Volume	Relative Liquidity	Long-Term Issuer Rating	
		31-May-2013	52 Week High	52 Week Low	2013	2014	2013	2014				2013 - 2014	2013: Q1	2013: Q1	May-13	QTD									YTD
<b>Apartments</b>																									
American Campus Communities Inc.	ACC	40.83	47.88	38.74	2.36	2.60	17.29	15.71	10.06	52.73	6.54	-7.80	-9.22	-10.13	-4.16	19.17	10.73	3.53	4,272.1	4,318.5	32.0	623	27,274	0.638	BBB-
Apartment Investment & Management Co.	AIV	30.26	33.20	24.30	2.03	2.20	14.92	13.72	8.73	50.00	8.19	-2.02	-0.59	13.57	15.35	16.40	4.68	3.17	4,404.2	4,646.4	53.1	1,301	41,257	0.937	BB+
Associated Estates Realty Corp.	AEC	16.43	18.90	14.35	1.30	1.38	12.65	11.86	6.58	61.29	7.67	-8.06	-10.94	4.20	8.88	11.12	13.59	4.63	813.2	814.4	45.8	562	10,102	1.242	BB+
AvalonBay Communities Inc.	AVB	132.66	151.00	124.02	5.02	6.85	26.43	19.58	36.39	124.36	9.02	-0.29	4.73	-1.34	-2.21	13.97	10.43	3.23	17,162.4	17,163.4	27.7	1,141	154,454	0.900	BBB+
BRE Properties Inc.	BRE	49.99	53.82	46.46	2.42	2.60	20.65	19.26	7.23	68.10	5.48	-0.97	2.69	-0.85	4.82	10.46	5.30	3.16	3,834.1	3,834.1	30.3	678	35,003	0.913	BBB
Camden Property Trust	CPT	69.25	75.46	62.70	4.00	4.31	17.30	16.08	7.57	57.73	5.61	-4.27	0.83	2.44	10.10	18.96	12.39	3.64	5,788.3	5,920.0	29.9	644	46,786	0.808	BBB+
Campus Crest Communities Inc.	CCG	12.65	14.31	10.25	0.87	1.03	14.57	12.31	18.37	94.12	6.98	-7.39	-8.99	4.44	23.94	-	-	5.22	772.6	778.1	40.7	569	7,484	0.969	BBB
Colonial Properties Trust	CLP	22.11	24.73	19.88	1.34	1.46	16.48	15.18	8.54	61.76	8.19	-3.85	-1.30	5.43	7.99	17.37	3.87	3.90	1,948.2	2,106.3	46.3	753	17,641	0.905	BBB-
Education Realty Trust Inc.	EDR	10.46	11.79	9.78	0.50	0.60	21.00	17.43	20.48	76.92	6.58	-4.82	0.29	0.17	-1.50	21.60	0.47	3.82	1,182.2	1,193.0	29.9	1,147	12,690	1.073	BBB
Equity Residential	EQR	56.55	65.47	54.06	2.88	3.13	19.64	18.05	8.77	-	14.74	-2.60	2.71	0.52	-4.41	11.03	10.35	2.83	20,357.3	21,147.3	38.9	2,947	172,059	0.845	BBB+
Essex Property Trust Inc.	ESS	157.14	170.47	138.08	7.76	8.25	20.24	19.05	6.27	55.84	6.66	0.06	4.36	8.02	7.65	18.05	9.95	3.08	5,722.1	6,055.7	32.9	321	52,033	0.909	BBB
Home Properties Inc.	HME	60.77	67.43	57.14	4.38	4.64	13.86	13.11	5.78	-	7.10	-4.71	-3.15	1.34	5.90	12.45	9.09	4.61	3,114.5	3,749.9	41.4	427	27,536	0.884	BBB
Mid-America Apartment Communities Inc.	MAA	67.97	74.41	60.82	4.92	5.22	13.82	13.01	6.20	55.60	5.85	-1.11	-0.60	7.15	5.04	12.00	9.11	4.09	2,872.9	2,990.6	37.3	307	21,946	0.764	BBB
Post Properties Inc.	PPS	47.80	52.33	46.75	2.89	2.78	16.55	17.16	-3.61	33.78	5.17	-3.30	1.49	-3.80	0.81	26.74	9.90	2.09	2,590.5	2,597.4	28.9	373	18,496	0.714	BBB
Preferred Apartment Communities Inc.	APTS	8.50	10.00	6.85	0.66	1.09	12.86	7.80	64.90	-	11.18	-7.10	-10.92	10.77	23.18	-	-	6.82	94.1	94.1	74.0	34	311	0.331	BBB
Trade Street Residential Inc	TSRE	9.60	25.50	8.25	-	-	-	-	-	-	-	-28.92	-31.02	-20.15	-52.84	-8.49	-47.67	0.00	107.9	107.9	-	77	878	0.814	BBB
UDR Inc.	UDR	24.37	27.06	22.51	1.39	1.48	17.47	16.44	6.28	62.86	7.62	-0.85	1.70	4.40	-2.46	9.91	6.09	3.86	6,097.5	6,283.8	36.3	2,184	55,481	0.910	BBB
<b>AVERAGE</b>		<b>48.08</b>	<b>54.34</b>	<b>43.82</b>	<b>2.80</b>	<b>3.10</b>	<b>17.23</b>	<b>15.35</b>	<b>13.66</b>	<b>65.78</b>	<b>7.66</b>	<b>-5.18</b>	<b>-3.41</b>	<b>1.54</b>	<b>2.71</b>	<b>14.05</b>	<b>4.55</b>	<b>3.62</b>	<b>4,772.6</b>	<b>4,929.5</b>	<b>39.1</b>	<b>829</b>	<b>41,261</b>	<b>0.856</b>	
<b>Manufactured Homes</b>																									
Equity Lifestyle Properties Inc.	ELS	77.17	85.54	63.82	5.09	5.35	15.17	14.43	5.15	0.00	5.78	-5.02	0.48	15.44	20.27	16.98	11.83	2.59	3,187.9	3,475.6	42.6	194	16,012	0.502	BBB
Sun Communities Inc.	SUI	49.97	56.89	36.59	3.30	3.62	15.13	13.82	9.46	70.00	6.60	-2.31	1.30	26.88	28.36	27.31	33.02	5.04	1,792.1	1,895.5	51.7	187	9,909	0.553	BBB
UMH Properties Inc.	UMH	10.54	12.16	9.38	-	-	-	-	-	66.67	4.42	-3.06	4.31	5.53	11.38	12.46	11.82	6.83	176.9	176.9	50.1	52	579	0.327	BBB
<b>AVERAGE</b>		<b>45.89</b>	<b>51.53</b>	<b>36.60</b>	<b>4.19</b>	<b>4.48</b>	<b>15.15</b>	<b>14.13</b>	<b>7.31</b>	<b>45.56</b>	<b>5.60</b>	<b>-3.46</b>	<b>2.03</b>	<b>15.95</b>	<b>20.00</b>	<b>18.92</b>	<b>18.89</b>	<b>4.82</b>	<b>1,719.0</b>	<b>1,849.3</b>	<b>48.1</b>	<b>144</b>	<b>8,833</b>	<b>0.461</b>	

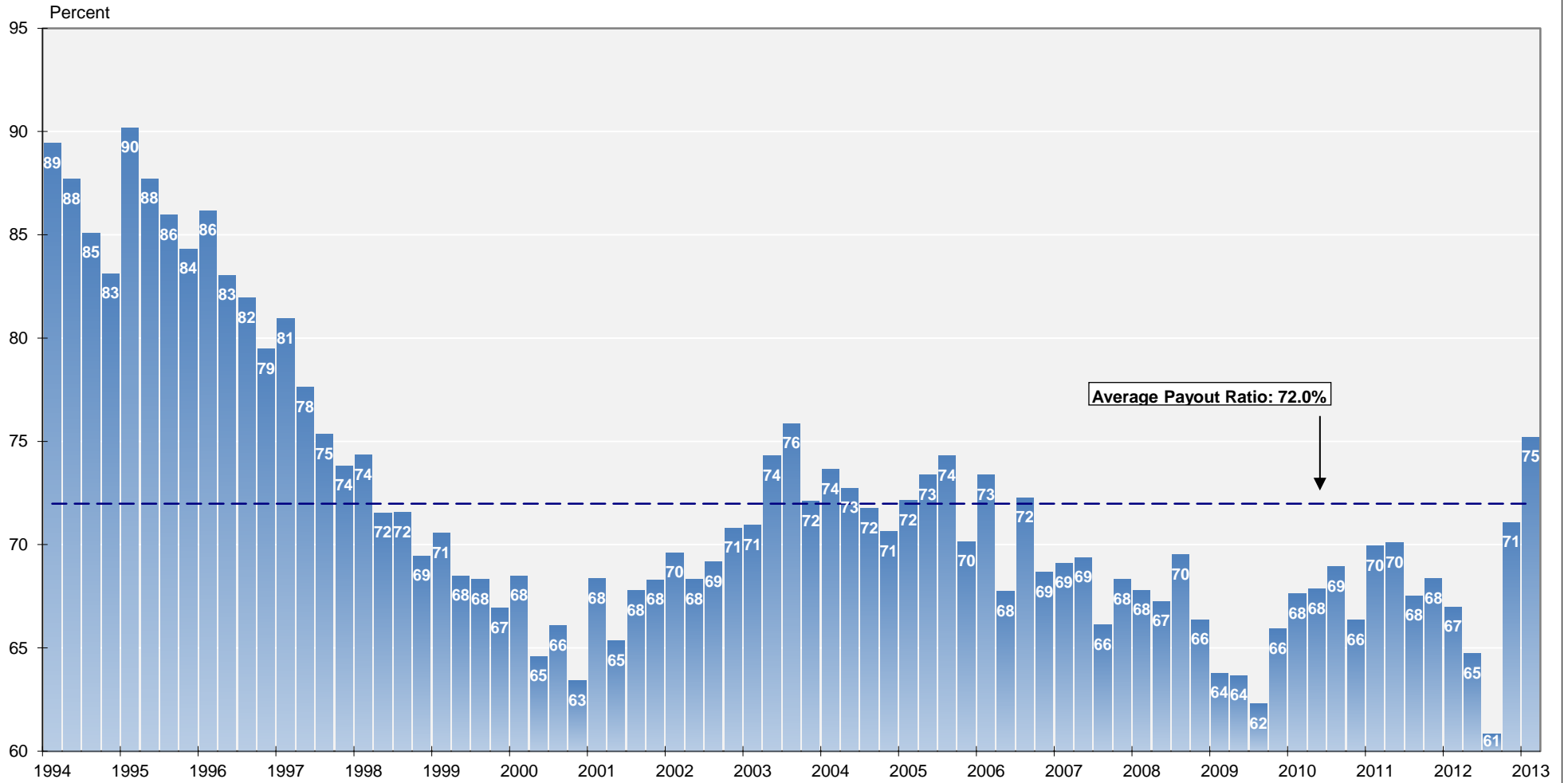
Name	Ticker	Share Price (\$)			FFO per Share		Price/FFO		FFO		FFO		Debt/		Total Return (%)					Dividend Yield (%)	Equity Market Cap (\$M)	Implied Market Cap (\$M)	Debt Ratio (%)	Average Share Volume	Average Dollar Volume	Relative Liquidity	Long-Term Issuer Rating		
		52 Week			Estimates (\$)		Estimates		Growth (%)		Payout (%)		EBITDA		YTD	1-Yr	3-Yr	5-Yr											
		31-May-2013	High	Low	2013	2014	2013	2014	2013-2014	2013: Q1	2013: Q1	May-13	QTD																
<b>Diversified</b>																													
American Assets Trust Inc.	AAT	32.20	35.59	22.91	1.48	1.60	21.71	20.17	7.64	55.26	7.07	-4.62	0.59	16.04	47.05	-	-	-	2.61	1,264.9	1,845.3	39.5	205	7,120	0.563				
American Residential Properties Inc.	ARPI	19.71	21.00	18.59	0.13	0.64	157.68	30.80	412.00	-	-	-6.14	-6.14	-6.14	-	-	-	0.00	633.5	633.5	-	648	13,232	2.089					
Armada Hoffer Properties Inc.	AHH	11.47	11.83	11.25	0.74	0.93	15.57	12.33	26.24	-	-	-0.95	-0.95	-0.95	-	-	-	0.00	169.2	169.2	-	450	5,224	3.088					
CapLease Inc.	LSE	8.62	8.71	4.09	0.56	0.64	15.39	13.55	13.57	53.57	9.87	22.79	37.01	56.69	131.78	25.64	6.86	3.60	756.2	757.5	76.3	2,157	16,058	2.124					
CoreSite Realty Corp.	COR	32.12	38.30	20.98	1.79	2.14	17.90	15.03	19.08	65.85	0.94	-11.22	-8.18	17.02	38.95	-	-	3.36	674.2	1,488.6	8.0	349	12,417	1.842					
CoreStates Corp. of America	COW	35.15	40.78	26.58	2.59	2.52	13.57	13.98	-2.90	0.00	3.06	-3.90	9.38	20.48	67.13	29.75	11.06	6.03	3,974.6	3,974.6	-	1,428	53,796	1.353					
Cousins Properties Inc.	CUZ	10.32	11.28	7.22	0.51	0.57	20.44	18.21	12.21	40.91	1.30	-3.11	-3.07	24.73	45.48	13.21	-13.24	1.74	1,282.0	1,282.0	28.5	723	7,852	0.612					
CyrusOne Inc.	CONE	21.68	24.23	20.78	1.23	1.64	17.63	13.20	33.53	-	-	-9.63	-5.08	2.98	-	-	-	0.74	423.4	423.4	-	315	7,115	1.680					
Digital Realty Trust Inc.	DLR	60.91	80.31	58.60	4.78	5.30	12.73	11.49	10.83	130.17	5.27	-13.63	-8.97	-9.25	-10.20	6.59	11.87	5.12	7,513.5	7,687.2	35.3	1,963	127,521	1.697					
DuPont Fabros Technology Inc.	DFT	24.23	28.94	20.11	1.84	2.18	13.20	11.12	18.69	50.00	3.34	-3.62	0.65	1.11	-2.29	0.53	5.75	3.30	1,532.1	1,987.3	26.8	967	25,049	1.635					
EPR Properties	EPR	52.42	60.70	40.40	3.96	4.18	13.25	12.55	5.57	72.82	4.64	-6.83	1.68	16.54	37.04	16.08	7.01	6.03	2,437.4	2,437.4	39.2	394	22,708	0.932					
Geo Group Inc.	GEO	34.82	38.81	21.12	2.41	2.53	14.45	13.75	5.08	100.00	5.68	-5.78	-6.21	27.02	100.05	27.21	13.61	5.74	2,480.4	2,480.4	-	574	21,544	0.869					
Gladstone Land Corp.	LAND	15.29	17.68	14.43	0.35	0.55	44.00	28.06	56.83	-	-	-6.66	-0.09	3.92	-	-	-	2.09	93.0	93.0	-	28	462	0.496					
HMG/Courland Properties Inc.	HMG	17.25	20.74	4.65	-	-	-	-	-	-	-	-0.47	-14.22	246.79	272.18	50.35	16.46	0.00	17.4	17.4	-	2	42	0.239					
Investors Real Estate Trust	IRET	9.00	10.00	7.49	0.67	0.69	13.39	13.04	2.68	81.25	7.04	-7.50	-8.81	4.48	34.65	8.27	3.75	5.78	841.4	1,033.5	52.0	375	3,582	0.426					
Lexington Realty Trust	LXP	12.59	13.64	7.99	1.01	1.07	12.43	11.78	5.52	60.00	7.15	-1.72	6.69	22.01	60.58	34.03	7.19	4.77	2,673.6	2,727.4	47.2	1,764	22,993	0.860					
One Liberty Properties Inc.	OLP	26.45	27.66	17.80	1.68	1.78	15.74	14.86	5.95	83.33	6.00	15.30	21.78	32.41	59.61	29.17	20.50	5.29	396.9	396.9	43.0	151	3,806	0.959					
Select Income REIT	SIR	27.23	28.81	22.69	3.00	3.10	9.08	8.78	3.33	56.00	4.15	-4.56	4.56	13.52	32.83	-	-	6.46	1,069.7	1,069.7	39.4	149	4,194	0.392					
Silver Bay Realty Trust Corp.	SBY	17.83	21.99	16.82	-0.11	0.64	-167.16	27.86	-700.00	-	-	-6.55	-13.86	-5.26	-	-	-	0.06	665.8	666.3	0.0	818	15,377	2.309					
Vornado Realty Trust	VNO	79.95	88.15	73.23	4.77	5.00	16.76	16.00	4.75	67.59	7.91	-7.92	-3.60	1.55	2.32	4.79	0.25	3.65	14,882.1	15,722.6	39.8	1,027	88,237	0.593					
W.P. Carey Inc.	WPC	67.74	78.58	43.53	3.40	3.52	19.92	19.24	3.53	98.51	6.75	-3.94	0.50	31.46	56.30	41.88	23.86	4.84	4,665.5	4,665.5	35.7	299	21,988	0.471					
Washington Real Estate Investment Trust	WRE	27.82	30.20	24.36	1.79	1.89	15.52	14.69	5.69	68.18	6.60	-2.59	-0.07	7.54	3.79	3.88	2.16	4.31	1,833.2	1,833.2	41.6	397	11,522	0.629					
Whitestone REIT	WSR	16.41	17.79	12.09	1.03	1.12	15.93	14.70	8.41	123.91	7.75	0.03	9.64	20.44	38.86	-	-	6.95	276.4	287.7	46.8	99	1,672	0.605					
Winthrop Realty Trust	FUR	12.41	13.14	10.42	1.25	1.35	9.93	9.18	8.20	33.85	4.89	-2.36	-1.35	13.76	27.47	4.70	-4.36	5.24	407.5	407.5	53.0	192	2,444	0.600					
<b>AVERAGE</b>		<b>28.07</b>	<b>32.04</b>	<b>22.01</b>	<b>1.78</b>	<b>1.98</b>	<b>14.74</b>	<b>15.84</b>	<b>-1.46</b>	<b>68.96</b>	<b>5.52</b>	<b>-3.19</b>	<b>0.50</b>	<b>23.29</b>	<b>54.93</b>	<b>19.73</b>	<b>7.52</b>	<b>3.65</b>	<b>2,123.5</b>	<b>2,253.8</b>	<b>38.4</b>	<b>645</b>	<b>20,665</b>	<b>1.128</b>					
<b>Health Care</b>																													
Aviv REIT Inc.	AVIV	25.92	30.45	22.55	1.42	1.92	18.28	13.50	35.40	-	15.21	2.39	9.32	16.64	-	-	-	1.48	1,224.8	1,224.8	-	426	12,074	0.986					
HCP Inc.	HCP	47.38	55.28	42.43	2.98	3.14	15.90	15.09	5.37	70.95	4.80	-10.23	-4.03	7.15	21.15	19.76	12.91	4.43	21,457.5	21,746.0	29.2	3,083	161,377	0.752					
Health Care REIT Inc.	HCN	68.03	78.98	56.35	3.76	4.05	18.09	16.80	7.63	117.69	7.99	-8.33	1.20	13.50	28.52	22.72	13.60	4.40	17,621.5	17,621.5	38.3	3,192	238,864	1.356					
Healthcare Realty Trust Inc.	HR	26.61	30.52	22.76	1.33	1.50	20.08	17.72	13.34	100.00	7.30	-10.46	-5.32	13.27	27.46	10.99	6.47	4.51	2,320.6	2,320.6	40.3	925	26,927	1.160					
LTC Properties Inc.	LTC	41.61	48.17	31.06	2.42	2.62	17.23	15.88	8.49	78.81	3.42	-10.23	2.85	20.50	35.63	24.20	15.23	4.47	1,423.6	1,423.6	22.2	333	15,271	1.073					
Medical Properties Trust Inc.	MPW	14.84	17.46	8.81	1.08	1.22	13.77	12.21	12.71	83.33	4.79	-7.77	-7.48	25.75	77.18	24.88	13.68	5.39	2,222.0	2,225.2	35.9	1,399	23,173	1.043					
National Health Investors Inc.	NHI	62.27	72.30	50.12	3.43	3.68	18.18	16.94	9.71	95.71	2.47	-5.99	-4.86	11.74	35.88	23.50	22.54	4.82	1,728.7	1,728.7	11.5	90	6,149	0.356					
Omega Healthcare Investors Inc.	OHI	32.41	37.61	21.50	2.47	2.58	13.11	12.67	4.31	72.58	4.65	-1.40	8.28	40.23	64.31	26.31	21.11	5.68	3,631.5	3,631.5	39.8	1,821	63,413	1.746					
Sabra Healthcare REIT Inc.	SBRA	27.05	32.01	16.25	1.79	1.98	15.11	13.65	10.66	73.91	4.75	-8.31	-5.75	27.53	99.10	-	-	5.03	997.3	997.3	37.6	363	11,112	1.114					
Senior Housing Properties Trust	SNH	25.85	29.67	21.25	1.79	1.90	14.45	13.59	6.27	95.12	4.64	-9.07	-2.26	12.72	33.53	14.72	10.67	6.03	4,861.2	4,861.2	30.5	1,471	41,922	0.862					
Universal Health Realty Income Trust	UHT	45.17	58.85	39.37	-	-	-	-	-	88.57	4.90	-15.93	-21.73	-9.79	21.77	18.58	13.04	5.49	571.6	571.6	23.7	40	2,070	0.362					
Ventas Inc.	VTR	71.37	82.93	60.12	4.08	4.30	17.50	16.60	5.44	67.00	5.53	-10.37	-2.50	11.32	26.20	19.89	13.78	3.76	20,999.1	21,125.9	30.2	1,902	150,049	0.715					
<b>AVERAGE</b>		<b>40.71</b>	<b>47.85</b>	<b>32.71</b>	<b>2.41</b>	<b>2.63</b>	<b>16.52</b>	<b>14.96</b>	<b>10.63</b>	<b>85.79</b>	<b>5.87</b>	<b>-7.98</b>	<b>-2.69</b>	<b>15.88</b>	<b>42.92</b>	<b>20.33</b>	<b>14.30</b>	<b>4.63</b>	<b>6,588.3</b>	<b>6,623.2</b>	<b>30.8</b>	<b>1,254</b>	<b>62,700</b>	<b>0.960</b>					
<b>Lodging/Resorts</b>																													
Ashford Hospitality Trust	AHT	13.21	13.99	9.27	1.70	2.00	7.76	6.60	17.57	-	11.75	2.56	6.88	26.92	61.92	22.46	21.20	3.63	897.7	1,130.3	72.7	353	4,638	0.517					
Chatham Lodging Trust	CLDT	18.55	19.58	12.89	1.52	1.75	12.23	10.60	15.38	-	11.75	1.69	6.14	23.07	52.01	6.19	-	4.53	322.9	322.9	51.8	98	1,843	0.571					
Chesapeake Lodging Trust	CHSP	22.55	24.10	15.96	1.66	1.97	13.55	11.44	18.45	-	10.74	-4.69	-1.70	9.12	30.68														

**Mortgage**

Name	Ticker	Share Price (\$)			FFO per Share		Price/FFO		FFO		Debt/EBITDA	Total Return (%)					Dividend Yield (%)	Equity Market Cap (\$M)	Implied Market Cap (\$M)	Debt Ratio (%)	Average Share Volume	Average Dollar Volume	Relative Liquidity	Long-Term Issuer Rating	
		31-May-2013	52 Week		2013	2014	2013	2014	2013 - 2014	2013: Q1		2013: Q1	May-13	QTD	YTD	1-Yr									3-Yr
<b>Home Financing</b>																									
AG Mortgage Investment Trust Inc.	MITT	22.89	26.72	20.77	-	-	-	-	-	-	36.84	-11.52	-10.13	0.53	30.13	-	-	13.98	616.1	616.1	88.0	436	10,896	1.769	
American Capital Agency Corp.	AGNC	25.80	36.68	24.49	-	-	-	-	-	-	46.76	-22.55	-21.29	-7.24	-8.04	18.69	26.96	19.38	10,034.9	10,034.9	89.0	11,741	343,505	3.423	
American Capital Mortgage Investment Corp.	MTGE	21.07	26.57	19.79	-	-	-	-	-	-	-	-20.67	-18.46	-7.45	2.31	-	-	17.09	1,179.2	1,179.2	90.0	1,650	38,900	3.299	
Annaly Capital Management Inc.	NLY	13.58	17.75	13.03	-	-	-	-	-	-	-	20.41	-14.81	-14.54	-0.50	-7.78	6.35	8.93	13,160.0	13,160.0	88.4	14,081	207,753	1.579	
Anworth Mortgage Asset Corp.	ANH	5.63	7.05	5.54	-	-	-	-	-	-	-	44.93	-10.78	-8.90	-0.23	-7.63	6.08	9.93	10.66	803.6	803.6	90.7	1,288	7,685	0.956
Apollo Residential Mortgage Inc.	AMTG	19.06	23.45	17.75	-	-	-	-	-	-	-	87.04	-14.38	-14.49	-2.56	19.13	-	14.69	591.0	591.0	90.0	630	13,357	2.260	
Armour Residential REIT Inc.	ARR	5.16	7.75	4.59	-	-	-	-	-	-	-	-	-19.57	-19.19	-15.55	-14.05	6.52	0.84	16.28	1,930.1	1,930.1	92.5	9,387	55,597	2.881
Capstead Mortgage Corp.	CMO	12.28	14.58	11.10	-	-	-	-	-	-	-	58.01	-7.53	-4.21	9.65	-0.97	15.46	12.64	10.10	1,173.1	1,173.1	91.9	949	12,029	1.025
Chimera Investment Corp.	CIM	3.05	3.32	2.13	-	-	-	-	-	-	-	-	-7.58	-4.39	20.10	24.08	6.74	-15.69	11.80	3,132.5	3,132.5	-	8,487	27,433	0.876
CYS Investments Inc	CYS	10.28	14.88	9.91	-	-	-	-	-	-	-	-	-17.30	-12.44	-10.66	-11.13	9.51	-	12.45	1,788.5	1,788.5	86.9	2,944	34,200	1.902
Dynex Capital Inc.	DX	10.17	11.03	8.91	-	-	-	-	-	-	-	14.74	-5.40	-4.78	10.66	22.51	14.48	14.59	11.41	552.7	552.7	87.9	537	5,745	1.039
Ellington Residential Mortgage REIT	EARN	19.40	19.85	17.41	-	-	-	-	-	-	-	0.00	0.94	0.94	0.94	-	-	-	0.00	177.2	177.2	-	430	8,375	4.727
FIVE OAKS INVESTMENT CORP.	OAKS	13.92	15.65	13.27	-	-	-	-	-	-	-	31.29	-6.85	-3.02	-2.15	-	-	-	2.08	102.9	102.9	-	100	1,483	1.442
Hatteras Financial Corp.	HTS	25.82	29.67	24.40	-	-	-	-	-	-	-	47.14	-5.53	-5.87	6.73	1.14	11.33	14.73	10.84	2,551.3	2,551.3	90.2	925	24,408	0.957
Invesco Mortgage Capital Inc.	IVR	18.65	22.25	18.00	-	-	-	-	-	-	-	27.67	-12.85	-12.81	-2.51	16.83	13.11	-	13.94	2,488.7	2,515.3	89.0	2,240	44,922	1.805
Javelin Mortgage Investment Corp.	JMI	15.39	20.16	14.76	-	-	-	-	-	-	-	20.38	-22.65	-19.80	-14.51	-	-	-	10.46	207.8	207.8	88.6	840	15,381	7.403
MFA Financial Inc.	MFA	8.78	9.59	7.63	-	-	-	-	-	-	-	20.05	-5.29	-3.53	16.91	34.57	21.65	19.55	10.02	3,126.2	3,126.2	76.8	3,531	32,375	1.036
Orchid Island Capital Inc	ORC	12.02	14.80	11.80	-	-	-	-	-	-	-	-	-9.47	-12.34	-16.41	-	-	-	3.37	40.2	40.2	-	15	205	0.510
PennyMac Mortgage Investment Trust	PMT	21.65	28.73	19.03	-	-	-	-	-	-	-	5.34	-12.22	-14.39	-10.34	28.97	20.19	-	10.53	1,275.3	1,275.3	52.0	1,225	29,157	2.286
Redwood Trust Inc.	RWT	19.16	23.59	11.90	-	-	-	-	-	-	-	-	-16.04	-17.34	14.83	68.96	16.01	-3.09	5.85	1,562.0	1,562.0	71.9	1,201	25,117	1.608
Two Harbors Investment Corp.	TWO	11.03	13.95	10.15	-	-	-	-	-	-	-	-	-7.93	-12.53	9.69	32.11	29.97	17.13	11.60	3,868.5	3,868.5	80.9	6,449	75,304	1.947
Western Asset Mortgage Capital Corp	WMC	18.35	24.45	17.41	-	-	-	-	-	-	-	-	-18.08	-17.70	-3.26	13.52	-	-	21.91	443.0	443.0	89.5	1,152	23,727	5.355
ZAIS Financial Corp.	ZFC	17.88	20.96	17.28	-	-	-	-	-	-	-	20.68	-12.49	-12.36	-9.38	-	-	-	1.23	142.5	159.1	-	63	1,245	0.874
<b>AVERAGE</b>		<b>15.26</b>	<b>18.84</b>	<b>13.96</b>	<b>-</b>	<b>-</b>	<b>-</b>	<b>-</b>	<b>-</b>	<b>-</b>	<b>-</b>	<b>32.09</b>	<b>-12.20</b>	<b>-11.46</b>	<b>-0.55</b>	<b>13.59</b>	<b>14.01</b>	<b>9.68</b>	<b>11.00</b>	<b>2,215.5</b>	<b>2,217.4</b>	<b>85.2</b>	<b>3,057</b>	<b>45,165</b>	<b>2.216</b>
<b>Commercial Financing</b>																									
Apollo Commercial Real Estate Finance Inc.	ARI	16.67	18.27	15.40	1.24	1.47	13.44	11.34	18.55	-	4.20	-6.03	-5.23	5.10	15.40	9.80	-	9.60	614.6	614.6	31.8	373	6,641	1.081	
Arbor Realty Trust Inc.	ABR	6.78	8.36	5.00	0.56	0.66	12.22	10.27	18.92	-	16.81	-10.70	-12.07	16.83	19.30	25.52	-10.12	7.08	292.0	292.0	87.8	207	1,494	0.512	
Ares Commercial Real Estate Corp.	ACRE	16.21	17.98	15.60	-	-	-	-	-	-	16.35	-3.68	-2.75	0.21	2.02	-	-	6.17	149.7	149.7	63.8	51	862	0.576	
Blackstone Mortgage Trust, Inc. Shs -A-	BXMT	26.37	38.50	18.20	-	-	-	-	-	-	-	-	9.42	-3.41	25.57	68.23	43.17	-26.92	0.00	670.5	670.5	76.5	706	18,995	2.833
BRT Realty Trust	BRT	7.64	7.70	6.22	-	-	-	-	-	-	-	11.86	6.11	8.83	17.54	7.91	7.95	-3.46	0.00	107.0	107.0	74.1	10	76	0.071
Colony Financial Inc.	CLNY	22.15	23.47	17.06	-	-	-	-	-	-	-	1.07	-0.67	-0.23	15.39	42.04	14.81	-	6.32	1,430.7	1,430.7	9.4	1,450	33,110	2.314
Gramercy Property Trust Inc.	GPT	4.52	5.21	2.31	-	-	-	-	-	-	0.00	-	-4.84	-13.24	53.74	77.25	41.51	-22.26	0.00	274.5	274.5	-	350	1,668	0.607
Hannon Armstrong Sustainable Infrastructure C	HASI	11.51	12.50	10.87	-	-	-	-	-	-	-	-	1.14	0.96	0.96	-	-	-	0.00	174.1	174.1	-	259	3,089	1.774
iStar Financial Inc.	SFI	11.91	12.45	5.88	-	-	-	-	-	-	-	36.99	1.97	9.37	46.13	110.05	25.11	-7.62	0.00	1,004.7	1,004.7	86.7	1,052	12,713	1.265
New Residential Investment Corp.	NRZ	6.84	7.10	6.26	-	-	-	-	-	-	-	9.54	1.18	1.18	1.18	-	-	-	0.00	1,730.7	1,730.7	-	4,066	27,889	1.611
Newcastle Investment Corp.	NCT	5.06	12.38	5.02	0.61	0.66	8.30	7.66	8.46	-	12.39	-4.73	-3.37	26.94	80.92	63.77	8.01	17.39	1,280.3	1,280.3	68.4	7,767	43,085	3.365	
Northstar Realty Finance Corp.	NRF	8.43	10.16	5.11	1.28	1.59	6.59	5.30	24.22	-	9.18	-13.78	-9.33	24.74	79.19	53.26	8.96	9.02	1,670.0	1,722.6	79.0	3,693	35,169	2.106	
PMC Commercial Trust	PCC	8.47	8.47	6.35	-	-	-	-	-	-	-	8.87	12.63	21.28	16.03	8.19	11.55	5.90	89.4	89.4	58.5	29	229	0.256	
RAIT Financial Trust	RAS	7.67	8.74	4.38	1.40	1.90	5.48	4.04	35.71	-	-	-10.19	-2.30	39.98	101.10	5.09	-17.33	6.26	536.4	536.4	87.0	741	6,238	1.163	
Resource Capital Corp.	RSO	6.19	6.87	5.27	0.63	0.78	9.83	7.94	23.81	-	16.39	-6.07	-6.35	13.90	32.68	19.95	12.26	12.92	770.9	770.9	74.5	1,391	9,058	1.175	
Starwood Property Trust Inc.	STWD	25.37	28.55	20.79	-	-	-	-	-	-	-	4.68	-7.71	-8.61	12.22	36.88	20.77	-	6.94	4,115.0	4,115.0	35.0	1,917	51,936	1.262
<b>AVERAGE</b>		<b>11.99</b>	<b>14.17</b>	<b>9.36</b>	<b>0.95</b>	<b>1.18</b>	<b>9.31</b>	<b>7.76</b>	<b>21.61</b>	<b>0.00</b>	<b>12.68</b>	<b>-2.48</b>	<b>-2.12</b>	<b>20.11</b>	<b>49.21</b>	<b>26.07</b>	<b>-4.69</b>	<b>5.48</b>	<b>931.9</b>	<b>935.2</b>	<b>64.0</b>	<b>1,504</b>	<b>15,766</b>	<b>1.373</b>	

**REIT Payout Ratios:  
 Dividends as a Percent of FFO**

1994: Q1 - 2013: Q1



Source: NAREIT®, SNL Financial.

**FTSE NAREIT All REITs**  
**Summary of Dividends and FFO by Property Sector**  
**March 28, 2013**

Sector	Number of Companies	Implied Market Cap (\$M)	2013: Q1			2013: YTD		
			Total Dividends (\$M)	Funds From Operations (\$M)	Payout Ratio (%)	Total Dividends (\$M)	Funds From Operations (\$M)	Payout Ratio (%)
Industrial/Office	31	105,276	1,065.6	1,759.7	60.6	1,065.6	1,759.7	60.6
Office	18	64,913	661.0	1,029.2	64.2	661.0	1,029.2	64.2
Industrial	7	24,982	216.6	472.7	45.8	216.6	472.7	45.8
Mixed	6	15,381	188.0	257.7	72.9	188.0	257.7	72.9
Retail	34	166,502	1,477.8	2,188.4	67.5	1,477.8	2,188.4	67.5
Shopping Centers	20	47,887	489.0	684.2	71.5	489.0	684.2	71.5
Regional Malls	8	103,616	768.7	1,295.3	59.3	768.7	1,295.3	59.3
Free Standing	6	14,998	220.2	208.8	105.5	220.2	208.8	105.5
Residential	20	88,767	814.4	946.5	86.0	814.4	946.5	86.0
Apartments	17	83,155	785.7	846.1	92.9	785.7	846.1	92.9
Manufactured Homes	3	5,612	28.7	100.3	28.6	28.7	100.3	28.6
Diversified	24	53,971	857.7	1,027.9	83.4	857.7	1,027.9	83.4
Lodging/Resorts	17	36,062	301.2	549.3	54.8	301.2	549.3	54.8
Health Care	12	78,250	924.4	1,083.0	85.4	924.4	1,083.0	85.4
Self Storage	4	34,767	326.7	428.0	76.3	326.7	428.0	76.3
Timber	4	31,299	231.3	-	-	231.3	-	-
Infrastructure	2	30,686	0.3	327.8	0.1	0.3	327.8	0.1
<b>Equity REITs</b>	<b>150</b>	<b>625,581</b>	<b>5,999.5</b>	<b>8,333.3</b>	<b>72.0</b>	<b>5,999.5</b>	<b>8,333.3</b>	<b>72.0</b>
Commercial Financing	16	15,089	245.9	-	-	245.9	-	-
Home Financing	23	50,905	1,602.1	-	-	1,602.1	-	-
<b>Mortgage REITs</b>	<b>39</b>	<b>65,994</b>	<b>1,848.0</b>	<b>-</b>	<b>-</b>	<b>1,848.0</b>	<b>-</b>	<b>-</b>

Notes:

<sup>1</sup> Implied market cap is the sum of Operating Partnership units plus common shares outstanding, multiplied by share price.

Source: NAREIT®, SNL Financial.



# REIT Industry Balance Sheet

## Publicly Listed and Non-Listed Equity and Mortgage REITs

(As of December 31, 2011)

	Listed	Non-Listed	Total Industry	Listed	Non-Listed
				(Percent of total)	
Number of Firms	160	63	223	71.8	28.2
	(Billions of dollars at book value)			(Percent of total)	
Total Assets	539	96	635	84.9	15.1
Total Liabilities	307	52	359	85.5	14.5
Total Equity	232	44	276	84.1	15.9
Total Liabilities plus Shareholder Equity	539	96	635	84.9	15.1
<i>Memo: Net Property Investment</i>					
<i>Book Value</i>	481	63	544	88.4	11.6
<i>Estimated Market Value</i>	732	97	829	88.3	11.7

Source: SNL Financial, The Stanger Report

## Summary of Financial Leverage by Property Sector 2013: Q1

(Publicly Traded Real Estate Investment Trusts)

Sector	Number of Companies	Implied Market Capitalization	Debt Ratio	Interest Coverage	Fixed Charge Coverage
Industrial/Office	30	103,447,766	39.8	2.47	2.21
Office	18	63,705,681	41.8	2.81	2.57
Industrial	7	25,905,559	34.9	1.15	1.03
Mixed	5	13,836,525	38.5	2.97	2.37
Retail	34	163,025,392	36.1	2.89	2.66
Shopping Centers	20	47,743,534	36.4	2.61	2.26
Regional Malls	8	100,158,503	36.2	3.04	2.92
Free Standing	6	15,123,355	34.5	2.82	2.44
Residential	19	84,486,286	36.4	3.50	3.42
Apartments	16	78,983,797	36.0	3.60	3.54
Manufactured Homes	3	5,502,489	40.7	2.69	2.43
Diversified	20	51,086,826	36.3	3.09	2.66
Lodging/Resorts	17	36,274,085	37.7	2.65	2.27
Health Care	12	81,744,193	29.6	3.73	3.57
Self Storage	4	34,420,036	9.0	11.92	5.55
Timber	4	34,639,364	19.9	5.20	5.20
Infrastructure	34	163,025,392	36.1	2.89	2.66
<b>Equity Totals</b>	<b>142</b>	<b>619,649,654</b>	<b>33.7</b>	<b>3.19</b>	<b>2.89</b>
Commercial Financing	15	14,621,850	56.7	1.16	0.99
Home Financing	21	59,067,136	85.2	3.11	2.95
<b>Mortgage Totals</b>	<b>36</b>	<b>73,688,986</b>	<b>82.9</b>	<b>2.75</b>	<b>2.55</b>
<b>Industry Totals</b>	<b>178</b>	<b>693,338,641</b>	<b>49.3</b>	<b>3.09</b>	<b>2.81</b>

Notes:

<sup>1</sup> Implied market capitalization is the sum of Operating Partnership units plus common shares outstanding, multiplied by share price; data presented in thousands of dollars.

Source: NAREIT®, SNL Financial.

## FTSE EPRA/NAREIT Global Real Estate Index Series Developed Markets

(Percent change, as of May 31, 2013)

(All values based in US dollars)

Period	Global			North America			Asia			Europe		
	Return Components			Return Components			Return Components			Return Components		
	Total	Price	Income	Total	Price	Income	Total	Price	Income	Total	Price	Income
<b>Annual (including current year to date)</b>												
2003	40.69	33.47	7.23	37.70	29.65	8.05	44.83	38.47	6.36	44.68	38.72	5.96
2004	37.96	31.97	6.00	33.51	26.88	6.63	36.85	32.24	4.61	52.73	46.95	5.78
2005	15.35	10.67	4.69	13.21	8.09	5.12	23.37	18.63	4.73	9.43	6.03	3.39
2006	42.35	37.50	4.85	36.26	30.89	5.38	36.49	32.15	4.34	66.99	62.79	4.20
2007	-6.96	-9.98	3.02	-14.92	-18.25	3.33	14.80	11.67	3.13	-24.50	-26.63	2.13
2008	-47.72	-50.21	2.49	-40.63	-43.88	3.25	-52.48	-54.43	1.94	-51.13	-53.30	2.17
2009	38.26	31.75	6.51	32.22	25.18	7.04	43.43	37.82	5.61	40.45	33.00	7.45
2010	20.40	15.88	4.52	28.65	23.63	5.01	17.21	13.23	3.98	9.23	4.41	4.82
2011	-5.82	-9.40	3.59	8.19	4.11	4.08	-19.61	-22.56	2.94	-12.34	-16.01	3.67
2012	28.65	23.79	4.86	18.14	13.82	4.32	45.52	40.35	5.17	30.70	24.51	6.20
2013	5.22	3.71	1.51	7.32	5.88	1.44	2.00	0.93	1.07	5.78	2.71	3.07
<b>Quarter (including current quarter to date)</b>												
2012: Q2	2.12	0.80	1.31	3.59	2.64	0.95	1.48	0.40	1.08	-1.84	-4.97	3.12
Q3	5.51	4.66	0.84	0.77	-0.13	0.91	12.63	11.72	0.91	7.30	6.87	0.43
Q4	5.77	4.82	0.94	2.29	1.26	1.02	9.27	8.28	0.98	10.01	9.48	0.53
2013: Q1	6.26	5.44	0.82	7.07	6.11	0.96	8.52	7.79	0.73	-2.51	-3.06	0.55
Q2	-0.98	-1.64	0.66	0.23	-0.22	0.45	-6.01	-6.37	0.36	8.51	5.95	2.55
<b>Month</b>												
2012: Dec	3.84	3.43	0.41	3.74	3.24	0.50	4.50	4.11	0.39	2.51	2.42	0.09
2013: Jan	3.16	2.99	0.17	3.36	3.13	0.22	3.85	3.73	0.12	0.64	0.55	0.09
Feb	0.72	0.50	0.23	0.84	0.61	0.23	1.53	1.23	0.30	-1.86	-1.88	0.02
Mar	2.27	1.88	0.39	2.73	2.26	0.46	2.93	2.66	0.27	-1.30	-1.75	0.44
Apr	7.30	6.96	0.34	6.70	6.52	0.18	7.65	7.47	0.18	8.76	7.31	1.45
May	-7.72	-8.04	0.33	-6.06	-6.33	0.26	-12.69	-12.88	0.19	-0.23	-1.27	1.04
<b>Historical (compound annual rates at month-end)</b>												
1-Year	25.07	20.62		16.61	12.39		36.02	31.54		33.24	27.64	
3-Year	16.21	11.92		16.84	12.51		14.81	10.87		17.78	12.60	
5-Year	2.55	-1.66		5.32	0.75		1.35	-2.39		-1.76	-6.39	
10-Year	11.57	7.08		11.59	6.65		13.14	9.12		9.58	5.20	
15-Year	9.48	4.80		9.71	4.15		10.53	6.73		7.74	3.47	
20-Year	9.29	4.64		12.03	5.82		7.43	3.85		8.72	4.42	
Source: FTSE™, EPRA®, NAREIT®.												

**Glossary of REITWatch terms:**

<b>REIT Name:</b>	Full name of the company.
<b>Ticker:</b>	The company's stock exchange symbol.
<b>Share Price (\$):</b>	The closing price per share on the date noted.
<b>52-Week Share Price (\$):</b>	The high and low closing prices for the shares over the previous 52 weeks.
<b>Price/FFO Multiples:</b>	Price on the date indicated divided by the FactSet mean FFO estimate for the current and following year.
<b>FFO per Share Estimates (\$):</b>	FactSet mean FFO estimate for the current and following year.
<b>FFO Growth (%):</b>	The percentage change between the current and following year mean FFO estimate as reported by FactSet.
<b>Debt/EBITDA Multiples</b>	Average Total Debt over the prior 2 quarters divided by the the most recent quarter's annualized EBITDA.
<b>FFO Payout (%):</b>	Regular cash dividends paid on the company's primary issue of common stock as a percent of funds from operations, on a per-share basis.
<b>Dividend Yield (%):</b>	The current indicated dividend rate annualized and divided by the current stock price.
<b>Dividend Spread (%):</b>	The difference between the REIT dividend yield and the 10-year constant maturity treasury yield.
<b>Total Returns (%):</b>	Total returns are calculated by taking the closing price for the current period, adding any dividends with an ex-dividend date in that period then subtracting the closing price for the previous period and dividing the result by the closing price of the prior period.
<b>Month:</b>	The monthly total return as calculated at month-end.
<b>Year to Date:</b>	The total return for the calendar year through the latest month-end.
<b>One Year:</b>	The total return for the previous year.
<b>Two Year:</b>	The annualized total return for the previous 2 years.
<b>Three Year:</b>	The annualized total return for the previous 3 years.
<b>Five Year:</b>	The annualized total return for the previous 5 years.
<b>Equity Market Capitalization (\$ Millions):</b>	Price on the date indicated times the number of common shares outstanding.
<b>Implied Market Capitalization (\$ Millions):</b>	Price on the date indicated times the number of shares outstanding including Operating Partnership Units.
<b>Debt Ratio (%):</b>	A leverage ratio calculated by taking the REIT's total debt and dividing it by the total market capitalization. Total capitalization is the sum of implied market capitalization and total debt.
<b>Long-Term Issuer Rating:</b>	The long-term credit rating, as announced by Standard & Poors, and obtained from SNL Financial.
<b>Average Share Volume:</b>	The average number of shares traded daily over the past month, represented in thousands.
<b>Average Daily Dollar Volume:</b>	The average of the daily value of shares traded over the past month, represented in thousands. Daily value is computed by multiplying shares traded by the closing price on that date.
<b>Relative Liquidity (%):</b>	Average daily dollar volume divided by equity market capitalization.





**National Association of Real Estate Investment Trusts®**  
*REITs: Building Dividends & Diversification®*

1875 I St, NW, Suite 600, Washington D.C. 20006  
phone: 202-739-9400 • fax: 202-739-9401