

NAREIT®

October 2012

REITWatch®

A Monthly Statistical Report on the Real Estate Investment Trust Industry



National Association of Real Estate Investment Trusts®

REITs: Building Dividends & Diversification®

NAREIT Disclaimer

NAREIT® does not intend this publication to be a solicitation related to any particular company, nor does it intend to provide investment, legal or tax advice. Investors should consult with their own investment, legal or tax advisers regarding the appropriateness of investing in any of the securities or investment strategies discussed in this publication. Nothing herein should be construed to be an endorsement by NAREIT of any specific company or products or as an offer to sell or a solicitation to buy any security or other financial instrument or to participate in any trading strategy. NAREIT expressly disclaims any liability for the accuracy, timeliness or completeness of data in this publication. Unless otherwise indicated, all data are derived from, and apply only to, publicly traded securities. Any investment returns or performance data (past, hypothetical or otherwise) are not necessarily indicative of future returns or performance. Copyright 2012 by NAREIT®. NAREIT and REITWatch are the exclusive registered marks of the National Association of Real Estate Investment Trusts®. Please direct all questions or comments to John Barwick, Director, Industry Information & Statistics, NAREIT®, 1875 I Street, NW, Suite 600, Washington, DC 20006 or call (202) 739-9400.

REITWATCH

TABLE OF CONTENTS

I. Indicators of US REIT Investment Performance

REIT Industry Fact Sheet	1
Investment Performance of the FTSE NAREIT US Real Estate Index Series	3
Investment Performance by Property Sector and Subsector	4
Selected Indicators of Equity Market Performance	5
Historical Offerings of REIT Securities	6
FTSE NAREIT Equity REITs Dividend Yield vs. 10-Year Constant Maturity Treasury	7
FTSE NAREIT Equity REITs Dividend Yield Spread	7
Major Stock Total Return Indexes	8
Average Daily Dollar Trading Volume	9
Comparative Total Return Investment Performance	10
Comparative Total Return Investment Correlations	11
20-Year Average Annual Total Returns	12
Adjusted 20-Year Average Annual Total Returns	12
20-Year Average Annual Total Return vs. 20-Year Standard Deviation of Annual Total Return ..	13
FTSE NAREIT All Equity REITs Return Components	14
S&P 500 Return Components	15
Wilshire 5000 Return Components	16
Annual Price and Total Returns by Investment Sector	17
Annual Price and Total Returns by Property Sector	18
Annual Price and Total Returns by Property Subsector	19
Annual Equity Market Capitalization	20
REITs in the FTSE NAREIT All REIT Index and S&P Equity Indexes	21
Mergers & Acquisitions Activity	26

II. US REIT Performance Statistics by Property Sector and Subsector

Industrial/Office	28
• Office	
• Industrial	
• Mixed	
Retail	29
• Shopping Centers	
• Regional Malls	
• Free Standing	
Residential	30
• Apartments	
• Manufactured Homes	
Diversified	31
Health Care	31
Lodging/Resorts	31
Self Storage	31
Timber	31
Mortgage	32
• Home Financing	
• Commercial Financing	



III. Indicators of US REIT Industry Activity

REIT Payout Ratios: Dividend as a Percent of Funds from Operations 33
REIT Dividends and Funds from Operations by Property Sector/Subsector 34
US REIT Industry Balance Sheet 35
Summary of REIT Financial Leverage 36

IV. Indicators of Global Real Estate Investment Performance

FTSE EPRA/NAREIT Global Real Estate Index Series Investment Performance 37

V. Glossary of REITWatch Terms



This page intentionally left blank.

REIT Industry Fact Sheet

Data as of September 28, 2012, except where noted.

All data are derived from, and apply only to, publicly traded US REITs.

Industry Size

- FTSE NAREIT All REITs equity market capitalization = \$579 billion
- FTSE NAREIT All Equity REITs equity market capitalization = \$514 billion
- REITs own approximately \$850 billion of commercial real estate assets, including listed and non-listed REITs
- 168 REITs are in the FTSE NAREIT All REITs Index
- 152 REITs trade on the New York Stock Exchange
- NYSE listed REITs equity market capitalization = \$559 billion

Investment Performance

Year-to-date and compound annual total returns of the FTSE NAREIT All REITs Index, the FTSE NAREIT All Equity REITs Index, and leading US benchmarks for periods ending September 28, 2012:

	FTSE NAREIT		S&P 500	Russell 2000	NASDAQ Composite ¹	Dow Jones Industrial Average ¹
	All REITs	All Equity REITs				
2012: YTD	17.57	16.09	16.44	14.23	19.62	9.98
1-Year	34.37	33.81	30.20	31.91	27.33	27.33
3-Year	20.32	20.73	13.20	12.99	13.66	11.43
5-Year	2.50	2.28	1.05	2.21	2.90	-0.67
10-Year	10.84	11.49	8.01	10.17	10.27	5.88
15-Year	8.19	8.78	4.70	5.52	4.18	3.57
20-Year	10.68	11.20	8.50	9.09	8.74	7.32
25-Year	9.22	10.37	8.61	8.16	8.10	6.80
30-Year	10.40	12.37	11.44	10.35	9.82	9.45
35-Year	11.18	13.01	11.28	-	10.30	8.22
40-Year	9.74	11.98	9.98	-	8.27	6.84
1972 - 2012	9.71	12.10	10.06	-	8.33	6.89

Data in percent; highest return for the period in bold.

¹ Price only returns.

Dividends

Yield Comparison

- FTSE NAREIT All REITs: 4.25%
- FTSE NAREIT All Equity REITs: 3.35%
- S&P 500: 2.20%

- REITs paid out approximately \$22 billion in dividends in 2011.
- On average, 72 percent of the annual dividends paid by REITs qualify as ordinary taxable income, 14 percent qualify as return of capital and 15 percent qualify as long-term capital gains.

REIT Industry Fact Sheet

Data as of September 28, 2012, except where noted.

All data are derived from, and apply only to, publicly traded US REITs.

Leverage and Coverage Ratios

(Data as of 2012: Q2)

Equity REITs

- Debt Ratio: 34.6%
- Coverage Ratio: 3.1x
- Fixed Charge Ratio: 2.8x
- 46 Equity REITs are rated investment grade, 68 percent by equity market capitalization.

All REITs

- Debt Ratio: 48.9%
- Coverage Ratio: 2.9x
- Fixed Charge Ratio: 2.7x
- 46 REITs are rated investment grade, 62 percent by equity market capitalization.

- Debt ratio equals total debt divided by total market capitalization. Total market capitalization is the sum of total debt and implied equity market capitalization (common shares plus operating partnership units).

- Coverage ratio equals EBITDA divided by interest expense.

- Fixed charge ratio equals EBITDA divided by interest expense plus preferred dividends.

Average Daily Dollar Trading Volume

- September 2012: \$4.9 billion
- September 2007: \$3.1 billion
- September 2002: \$557 million

Capital Offerings

- REITs have raised \$54.3 billion in initial, debt and equity capital offerings in 2012. \$36.9 billion was raised in secondary equity common and preferred share offerings, \$16.0 billion was raised in unsecured debt offerings, and \$1.4 billion was raised in initial public offerings.

Exhibit 1 Investment Performance: FTSE NAREIT US Real Estate Index Series

September 28, 2012

Period	FTSE NAREIT All REITs			FTSE NAREIT Composite			FTSE NAREIT Real Estate 50™ ¹			FTSE NAREIT All Equity REITs			FTSE NAREIT Equity REITs			FTSE NAREIT Mortgage REITs		
	Returns (%)		Dividend	Returns (%)		Dividend	Returns (%)		Dividend	Returns (%)		Dividend	Returns (%)		Dividend	Returns (%)		Dividend
	Total	Price	Yield ²	Total	Price	Yield ²	Total	Price	Yield ²	Total	Price	Yield ²	Total	Price	Yield ²	Total	Price	Yield ²
Annual (including current year to date)																		
2007	-17.83	-21.39	5.29	-17.83	-21.42	5.35	-16.34	-19.57	4.77	-15.69	-19.05	4.91	-15.69	-19.05	4.91	-42.35	-47.69	10.52
2008	-37.34	-41.04	8.37	-37.84	-41.56	8.32	-37.31	-40.78	7.22	-37.73	-41.12	7.56	-37.73	-41.12	7.56	-31.31	-40.46	14.47
2009	27.45	19.90	4.63	27.80	20.15	4.69	27.62	20.36	4.48	27.99	21.28	3.73	27.99	21.28	3.73	24.63	8.26	14.86
2010	27.58	21.81	4.23	27.56	21.76	4.31	26.72	21.13	4.09	27.95	23.07	3.54	27.96	23.06	3.58	22.60	7.01	13.03
2011	7.28	2.37	4.83	7.30	2.34	4.90	9.45	4.69	4.60	8.28	4.32	3.82	8.29	4.32	3.83	-2.42	-15.14	14.82
2012	17.57	13.85	4.25	17.35	13.60	4.32	16.11	12.72	3.94	16.09	13.19	3.35	15.09	12.10	3.53	28.11	16.81	11.95
Quarter (including current quarter to date)																		
2011: Q2	2.94	1.79	4.32	2.87	1.70	4.40	3.43	2.34	4.15	2.90	2.00	3.44	3.63	2.71	3.44	2.45	-1.03	13.55
Q3	-14.62	-15.66	5.23	-14.51	-15.57	5.31	-13.88	-14.87	4.97	-15.07	-15.88	4.10	-14.71	-15.52	4.08	-9.86	-13.24	15.44
Q4	14.29	12.79	4.83	14.05	12.55	4.90	14.02	12.61	4.60	15.26	14.07	3.82	15.22	14.03	3.83	3.96	0.00	14.82
2012: Q1	10.41	9.30	4.29	10.36	9.23	4.36	9.82	8.79	4.01	10.49	9.59	3.34	10.79	9.84	3.54	9.08	5.83	13.82
Q2	4.55	3.37	4.20	4.45	3.28	4.27	4.50	3.42	3.91	4.00	3.09	3.29	3.71	2.79	3.46	8.53	5.02	12.92
Q3	1.85	0.77	4.25	1.79	0.70	4.32	1.17	0.19	3.94	1.03	0.19	3.35	0.16	-0.71	3.53	8.22	5.09	11.95
Month																		
2012: Apr	2.80	2.61	4.20	2.75	2.57	4.27	2.83	2.68	3.92	2.67	2.50	3.27	2.88	2.71	3.45	3.51	3.24	13.27
May	-3.95	-4.21	4.40	-3.91	-4.17	4.48	-3.88	-4.17	4.11	-4.41	-4.69	3.45	-4.54	-4.83	3.64	0.60	0.47	13.19
Jun	5.88	5.16	4.20	5.79	5.07	4.27	5.73	5.10	3.91	5.97	5.53	3.29	5.61	5.15	3.46	4.23	1.25	12.92
Jul	2.30	2.13	4.16	2.36	2.20	4.24	2.49	2.37	3.85	2.17	2.02	3.23	1.95	1.79	3.41	4.05	3.86	12.50
Aug	0.46	0.20	4.20	0.26	-0.01	4.27	-0.12	-0.41	3.88	0.12	-0.17	3.26	0.02	-0.27	3.44	1.41	1.34	12.35
Sep	-0.89	-1.52	4.25	-0.81	-1.46	4.32	-1.17	-1.72	3.94	-1.23	-1.63	3.35	-1.78	-2.19	3.53	2.55	-0.15	11.95
Week (including current week to date)																		
24-Aug-12	-0.02	-0.02	4.23	-0.10	-0.10	4.30	-0.14	-0.14	3.91	-0.21	-0.21	3.28	-0.10	-0.10	3.46	0.81	0.75	12.54
31-Aug-12	0.92	0.89	4.20	0.86	0.84	4.27	0.81	0.78	3.88	0.78	0.75	3.26	0.67	0.66	3.44	1.46	1.49	12.35
7-Sep-12	1.57	1.53	4.14	1.57	1.53	4.21	1.47	1.42	3.82	1.60	1.55	3.21	1.53	1.47	3.39	1.39	1.32	12.18
14-Sep-12	1.53	1.40	4.08	1.63	1.50	4.15	1.47	1.36	3.78	1.62	1.48	3.16	1.53	1.39	3.34	1.72	1.59	12.00
21-Sep-12	-2.66	-2.79	4.19	-2.65	-2.79	4.26	-2.85	-2.98	3.90	-3.06	-3.09	3.26	-3.30	-3.33	3.45	0.65	-0.28	12.02
28-Sep-12	-1.27	-1.60	4.25	-1.30	-1.63	4.32	-1.19	-1.46	3.94	-1.31	-1.50	3.35	-1.47	-1.66	3.53	-1.21	-2.71	11.95
Historical (compound annual rates at month-end)																		
1-Year	34.37	28.41		33.84	27.85		32.39	26.93		33.81	29.11		32.61	27.82		33.19	16.81	
3-Year	20.32	14.90		20.33	14.86		20.75	15.57		20.73	16.30		20.38	15.92		14.82	0.15	
5-Year	2.50	-2.71		433.48	174.08		2.39	-2.55		2.28	-2.19		2.11	-2.38		5.64	-7.85	
10-Year	10.84	4.99		130.97	65.55		11.94	6.58		11.49	6.20		11.39	6.10		3.60	-8.34	
15-Year	8.19	1.78		74.73	39.94		-	-		8.78	2.80		8.72	2.73		2.74	-9.01	
20-Year	10.68	3.83		51.98	28.67		-	-		11.20	4.81		11.15	4.76		6.70	-5.34	
25-Year	9.22	1.54		39.77	22.34		-	-		10.37	3.38		10.33	3.34		5.00	-7.14	
30-Year	10.40	2.31		32.19	18.30		-	-		12.37	4.98		12.34	4.95		5.71	-6.29	
35-Year	11.18	2.68		27.02	15.49		-	-		13.01	5.04		12.98	5.02		6.47	-5.53	
40-Year	9.74	1.11		23.28	13.43		-	-		11.98	3.92		11.95	3.90		5.41	-6.39	

Source: FTSE™, NAREIT®.

Notes:

¹ The FTSE NAREIT Real Estate 50™ is designed to measure the performance of larger and more frequently traded REITs.

² Dividend yield quoted in percent for the period end.

Disclaimer: The FTSE NAREIT US Real Estate Index Series ("Indexes") is calculated by FTSE International Limited ("FTSE"). All rights in the Indexes vest in FTSE® and the National Association of Real Estate Investment Trusts® ("NAREIT"). FTSE is a trademark of the London Stock Exchange Plc and The Financial Times Limited and is used by FTSE under licence. NAREIT® is a trademark of the National Association of Real Estate Investment Trusts. Neither FTSE nor NAREIT nor their licensors shall be liable (including in negligence) for any loss arising out of use of the Indexes by any person. All data are derived from, and apply only to, publicly traded securities.

Exhibit 2 Investment Performance by Property Sector and Subsector

September 28, 2012

Sector	Number of Constituents	Total Return (%)			Dividend Yield (%)	Market Capitalization (\$)¹	
		2011	Sep-12	2012: YTD		Equity	Implied
FTSE NAREIT All Equity REITs	129	8.28	-1.23	16.09	3.35	514,028,303	540,808,054
FTSE NAREIT Equity REITs	124	8.29	-1.78	15.09	3.53	457,064,425	483,844,175
Industrial/Office	31	-1.47	0.71	17.97	3.51	86,995,522	92,762,121
Industrial	7	-5.16	2.98	25.46	3.28	21,868,107	22,348,291
Office	19	-0.76	-0.12	14.08	3.36	54,441,922	58,995,811
Mixed	5	2.67	0.25	23.42	4.82	10,685,493	11,418,020
Retail	31	12.20	-2.68	23.30	3.21	136,661,172	150,445,620
Shopping Centers	18	-0.73	-0.41	24.65	3.55	41,538,938	42,279,189
Regional Malls	8	22.00	-3.96	22.90	2.85	83,626,001	96,661,338
Free Standing	5	0.43	-1.65	20.90	4.37	11,496,233	11,505,094
Residential	18	15.37	-3.66	5.44	3.07	75,639,050	78,655,649
Apartments	15	15.10	-3.81	5.17	3.04	71,462,661	74,118,319
Manufactured Homes	3	20.38	-0.98	10.26	3.61	4,176,390	4,537,329
Diversified	15	2.82	-1.65	10.56	4.03	35,516,752	38,664,210
Lodging/Resorts	14	-14.31	2.95	12.54	2.90	27,982,765	28,454,798
Health Care	11	13.63	-2.69	13.67	4.91	63,841,969	64,220,646
Self Storage	4	35.22	-2.82	12.58	3.01	30,427,195	30,641,131
Timber	4	7.65	4.58	29.65	3.00	28,648,420	28,648,420
Infrastructure	1	-	1.73	19.65	0.92	28,315,458	28,315,458
FTSE NAREIT Mortgage REITs	28	-2.42	2.55	28.11	11.95	62,967,530	63,036,443
Home Financing	18	-0.87	2.32	27.08	12.48	54,528,175	54,556,861
Commercial Financing	10	-11.34	4.10	35.13	8.48	8,439,355	8,479,582

Source: FTSE^{1M}, NAREIT®.

Notes:

¹ Implied market capitalization is calculated as common shares outstanding plus operating partnership units, multiplied by share price. Data

Exhibit 3 Selected Indicators of Equity Market Performance

(Period ending index levels and percent change)

September 28, 2012

Period	FTSE NAREIT All Equity REITs		S&P 500		Dow Jones Industrials ¹		Russell 2000		NASDAQ Composite ¹		US Treasury 10-Year Note ²	
	Levels	Returns	Levels	Returns	Levels	Returns	Levels	Returns	Levels	Returns	Yield	Change
Annual (including current year to date)												
2002	3,552.10	3.82	1,261.18	-22.10	8,341.63	-16.76	1,543.73	-20.48	1,335.51	-31.53	3.83	-1.24
2003	4,871.12	37.13	1,622.94	28.68	10,453.92	25.32	2,273.20	47.25	2,003.37	50.01	4.27	0.44
2004	6,409.30	31.58	1,799.55	10.88	10,783.01	3.15	2,689.86	18.33	2,175.44	8.59	4.24	-0.03
2005	7,188.85	12.16	1,887.94	4.91	10,717.50	-0.61	2,812.35	4.55	2,205.32	1.37	4.39	0.15
2006	9,709.31	35.06	2,186.13	15.79	12,463.15	16.29	3,328.90	18.37	2,415.29	9.52	4.71	0.32
2007	8,185.75	-15.69	2,306.23	5.49	13,264.82	6.43	3,276.77	-1.57	2,652.28	9.81	4.04	-0.67
2008	5,097.46	-37.73	1,452.98	-37.00	8,776.39	-33.84	2,169.65	-33.79	1,577.03	-40.54	2.25	-1.79
2009	6,524.25	27.99	1,837.50	26.46	10,428.05	18.82	2,759.17	27.17	2,269.15	43.89	3.85	1.60
2010	8,347.58	27.95	2,114.29	15.06	11,577.51	11.02	3,500.15	26.85	2,652.87	16.91	3.30	-0.55
2011	9,039.07	8.28	2,158.94	2.11	12,217.56	5.53	3,353.99	-4.18	2,605.15	-1.80	1.89	-1.41
2012	10,493.88	16.09	2,513.93	16.44	13,437.13	9.98	3,831.33	14.23	3,116.23	19.62	1.65	-0.24
Quarter (including current quarter to date)												
2010: Q4	8,347.58	7.43	2,114.29	10.76	11,577.51	7.32	3,500.15	16.25	2,652.87	12.00	3.30	0.77
2011: Q1	8,973.82	7.50	2,239.44	5.92	12,319.73	6.41	3,778.03	7.94	2,781.07	4.83	3.47	0.17
Q2	9,234.38	2.90	2,241.66	0.10	12,414.34	0.77	3,717.36	-1.61	2,773.52	-0.27	3.18	-0.29
Q3	7,842.64	-15.07	1,930.79	-13.87	10,913.38	-12.09	2,904.55	-21.87	2,415.40	-12.91	1.92	-1.26
Q4	9,039.07	15.26	2,158.94	11.82	12,217.56	11.95	3,353.99	15.47	2,605.15	7.86	1.89	-0.03
2012: Q1	9,987.37	10.49	2,430.67	12.59	13,212.04	8.14	3,771.11	12.44	3,091.57	18.67	2.23	0.34
Q2	10,386.82	4.00	2,363.79	-2.75	12,880.09	-2.51	3,640.11	-3.47	2,935.05	-5.06	1.67	-0.56
Q3	10,493.88	1.03	2,513.93	6.35	13,437.13	4.32	3,831.33	5.25	3,116.23	6.17	1.65	-0.02
Month												
2011: Sep	7,842.64	-10.97	1,930.79	-7.03	10,913.38	-6.03	2,904.55	-11.21	2,415.40	-6.36	1.92	-0.31
Oct	8,962.35	14.28	2,141.81	10.93	11,955.01	9.54	3,344.17	15.14	2,684.41	11.14	2.17	0.25
Nov	8,625.48	-3.76	2,137.08	-0.22	12,045.68	0.76	3,331.98	-0.36	2,620.34	-2.39	2.08	-0.09
Dec	9,039.07	4.79	2,158.94	1.02	12,217.56	1.43	3,353.99	0.66	2,605.15	-0.58	1.89	-0.19
2012: Jan	9,613.80	6.36	2,255.69	4.48	12,632.91	3.40	3,590.96	7.07	2,813.84	8.01	1.83	-0.06
Feb	9,526.22	-0.91	2,353.23	4.32	12,952.07	2.53	3,676.90	2.39	2,966.89	5.44	1.98	0.15
Mar	9,987.37	4.84	2,430.67	3.29	13,212.04	2.01	3,771.11	2.56	3,091.57	4.20	2.23	0.25
Apr	10,254.33	2.67	2,415.42	-0.63	13,213.63	0.01	3,712.86	-1.54	3,046.36	-1.46	1.95	-0.28
May	9,802.04	-4.41	2,270.25	-6.01	12,393.45	-6.21	3,467.10	-6.62	2,827.34	-7.19	1.59	-0.36
Jun	10,386.82	5.97	2,363.79	4.12	12,880.09	3.93	3,640.11	4.99	2,935.05	3.81	1.67	0.08
Jul	10,612.21	2.17	2,396.62	1.39	13,008.68	1.00	3,589.81	-1.38	2,939.52	0.15	1.51	-0.16
Aug	10,624.91	0.12	2,450.60	2.25	13,090.84	0.63	3,709.52	3.33	3,066.96	4.34	1.57	0.06
Sep	10,493.88	-1.23	2,513.93	2.58	13,437.13	2.65	3,831.33	3.28	3,116.23	1.61	1.65	0.08
Historical (compound annual rates)												
1-Year	33.81		30.20		23.13		31.91		29.02			
3-Year	20.73		13.20		11.43		12.99		13.66			
5-Year	2.28		1.05		-0.67		2.21		2.90			
10-Year	11.49		8.01		5.88		10.17		10.27			
15-Year	8.78		4.70		3.57		5.52		4.18			
20-Year	11.20		8.50		7.32		9.09		8.74			
25-Year	10.37		8.61		6.80		8.16		8.10			
30-Year	12.37		11.44		9.45		10.35		9.82			
35-Year	13.01		11.28		8.22		-		10.30			
40-Year	11.98		9.98		6.84		-		8.27			

Source: NAREIT®, FactSet.

¹ Price-only returns

² Ten-year constant maturity Treasury note

Exhibit 4 Historical Offerings of Securities

September 28, 2012

Period	Total		Initial Public Offering		Secondary Equity				Secondary Debt			
	Number	Capital Raised ¹	Number	Capital Raised ¹	Common Shares		Preferred Shares		Unsecured Debt		Secured Debt	
					Number	Capital Raised ¹	Number	Capital Raised ¹	Number	Capital Raised ¹	Number	Capital Raised ¹
Annual Totals (including current year to date)												
2004	266	38,482	29	7,980	79	7,338	61	5,858	97	17,306	0	0
2005	259	37,492	11	3,789	71	8,521	36	3,095	105	16,330	36	5,758
2006	204	49,018	5	2,271	75	15,695	39	4,239	82	25,261	3	1,551
2007	129	36,031	4	1,820	56	11,854	26	4,202	43	18,155	0	0
2008	82	17,991	2	491	60	11,132	9	1,195	11	5,173	0	0
2009	130	34,656	9	2,990	87	21,244	0	0	34	10,422	0	0
2010	173	47,450	9	1,975	91	23,629	17	2,617	56	19,230	0	0
2011	164	51,280	8	2,307	92	31,075	31	4,108	33	13,790	0	0
2012	193	54,293	6	1,373	84	27,253	62	9,706	41	15,961	0	0
Quarterly Totals												
2011: Q2	54	13,697	4	953	28	7,636	11	1,358	11	3,750	0	0
Q3	23	7,932	2	414	13	6,290	7	978	1	250	0	0
Q4	26	7,879	0	0	14	3,542	5	288	7	4,050	0	0
2012: Q1	65	21,206	1	198	28	10,634	23	4,049	13	6,325	0	0
Q2	52	12,296	3	616	25	5,617	13	1,537	11	4,525	0	0
Q3	76	20,791	2	559	31	11,001	26	4,120	17	5,111	0	0
Monthly Totals												
2010: Dec	16	4,718	0	0	13	4,153	2	165	1	400	0	0
2011: Jan	19	6,916	1	648	10	3,370	3	247	5	2,650	0	0
February	8	2,722	1	292	7	2,431	0	0	0	0	0	0
March	34	12,135	0	0	20	7,807	5	1,237	9	3,090	0	0
April	17	3,139	2	257	6	1,006	7	901	2	975	0	0
May	22	5,471	1	569	11	2,445	4	457	6	2,000	0	0
June	15	5,087	1	127	11	4,185	0	0	3	775	0	0
July	11	4,861	1	230	7	4,107	3	523	0	0	0	0
August	5	1,634	1	184	2	1,175	1	25	1	250	0	0
September	7	1,438	0	0	4	1,008	3	430	0	0	0	0
October	8	2,001	0	0	4	1,760	4	242	0	0	0	0
November	14	4,434	0	0	8	1,638	1	46	5	2,750	0	0
December	4	1,444	0	0	2	144	0	0	2	1,300	0	0
2012: Jan	21	5,546	0	0	11	3,051	8	1,645	2	850	0	0
February	17	5,146	0	0	7	2,498	6	973	4	1,675	0	0
March	27	10,514	1	198	10	5,085	9	1,431	7	3,800	0	0
April	14	2,900	2	456	4	1,092	5	352	3	1,000	0	0
May	21	5,420	1	160	12	2,515	5	719	3	2,025	0	0
June	17	3,976	0	0	9	2,010	3	466	5	1,500	0	0
July	28	7,408	1	59	8	4,257	13	1,642	6	1,450	0	0
August	26	6,248	0	0	13	2,952	6	985	7	2,311	0	0
September	22	7,135	1	500	10	3,792	7	1,493	4	1,350	0	0

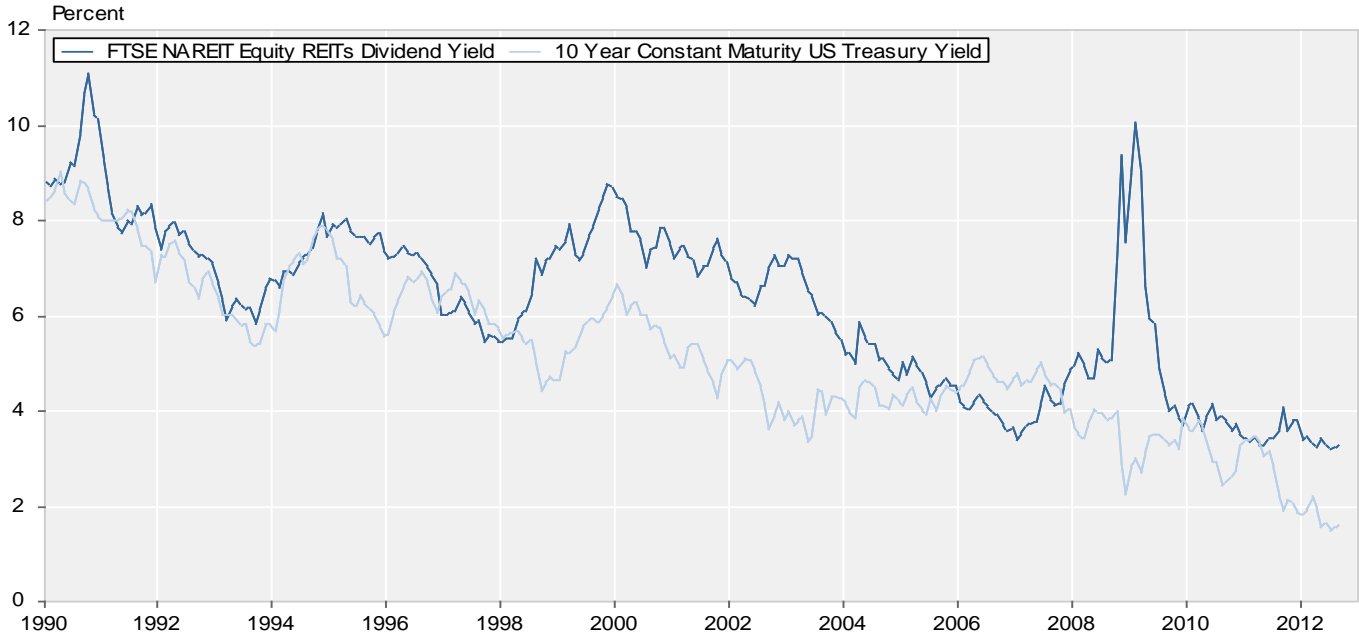
Source: SNL Financial, NAREIT®.

Notes:

¹ Data presented in millions of dollars.

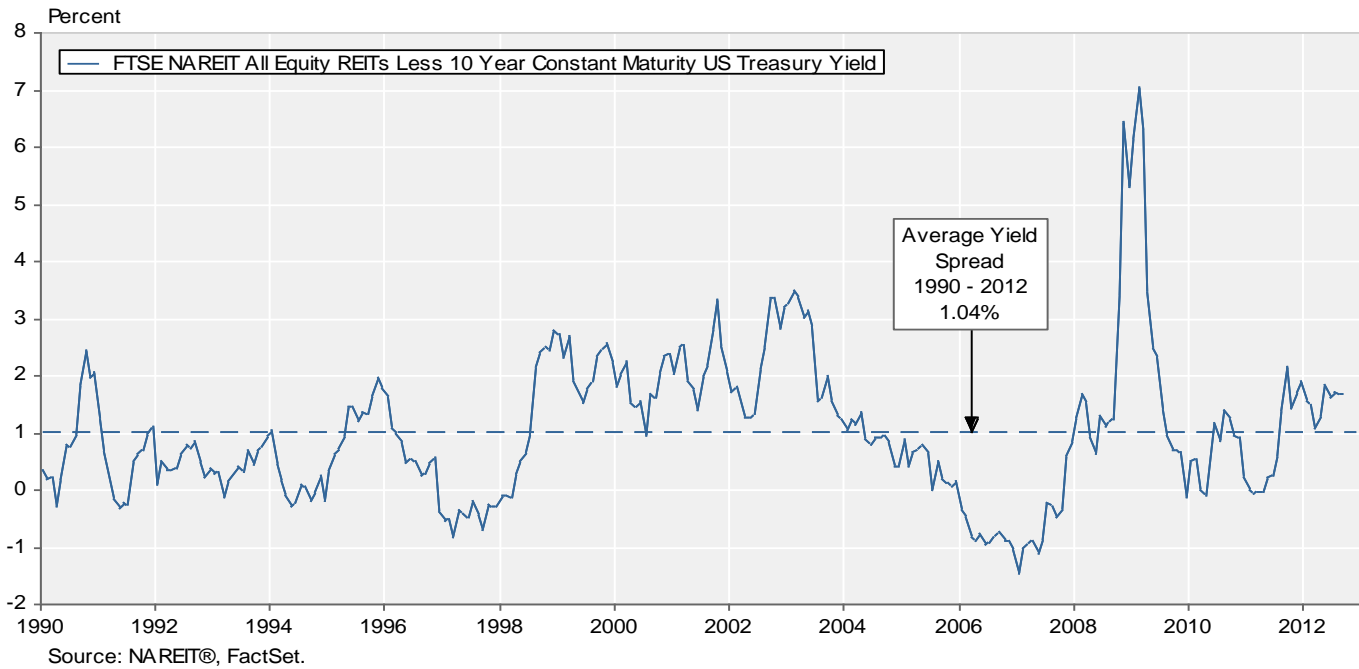
**Exhibit 5:
 Equity REIT Dividend Yield vs. 10-Year Constant Maturity Treasury Yield**

January 1990 - September 2012



**Exhibit 6:
 Monthly Equity REIT Dividend Yield Spread**

January 1990 - September 2012

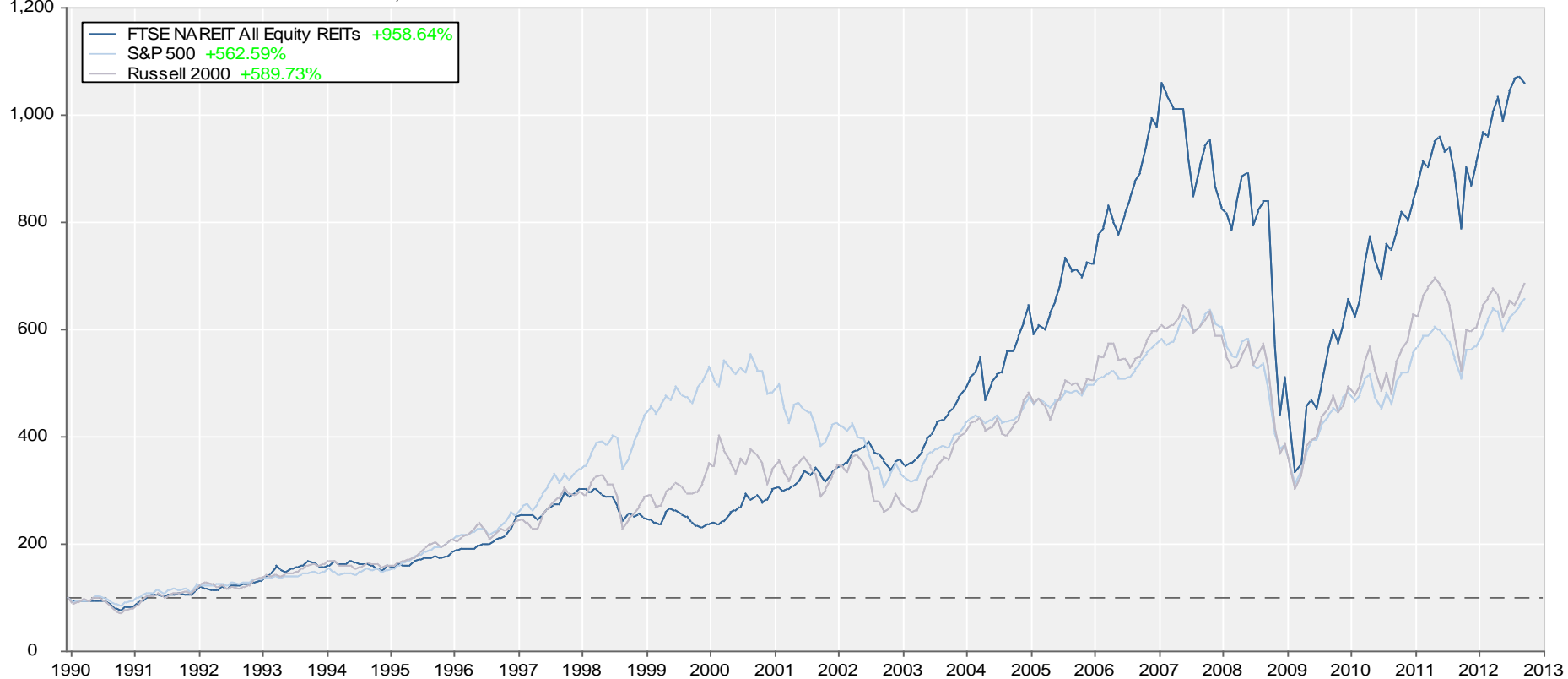


Total Return Index Comparison

Monthly Returns

December 1989 - September 2012

Benchmarked at 100 as of December 31, 1989

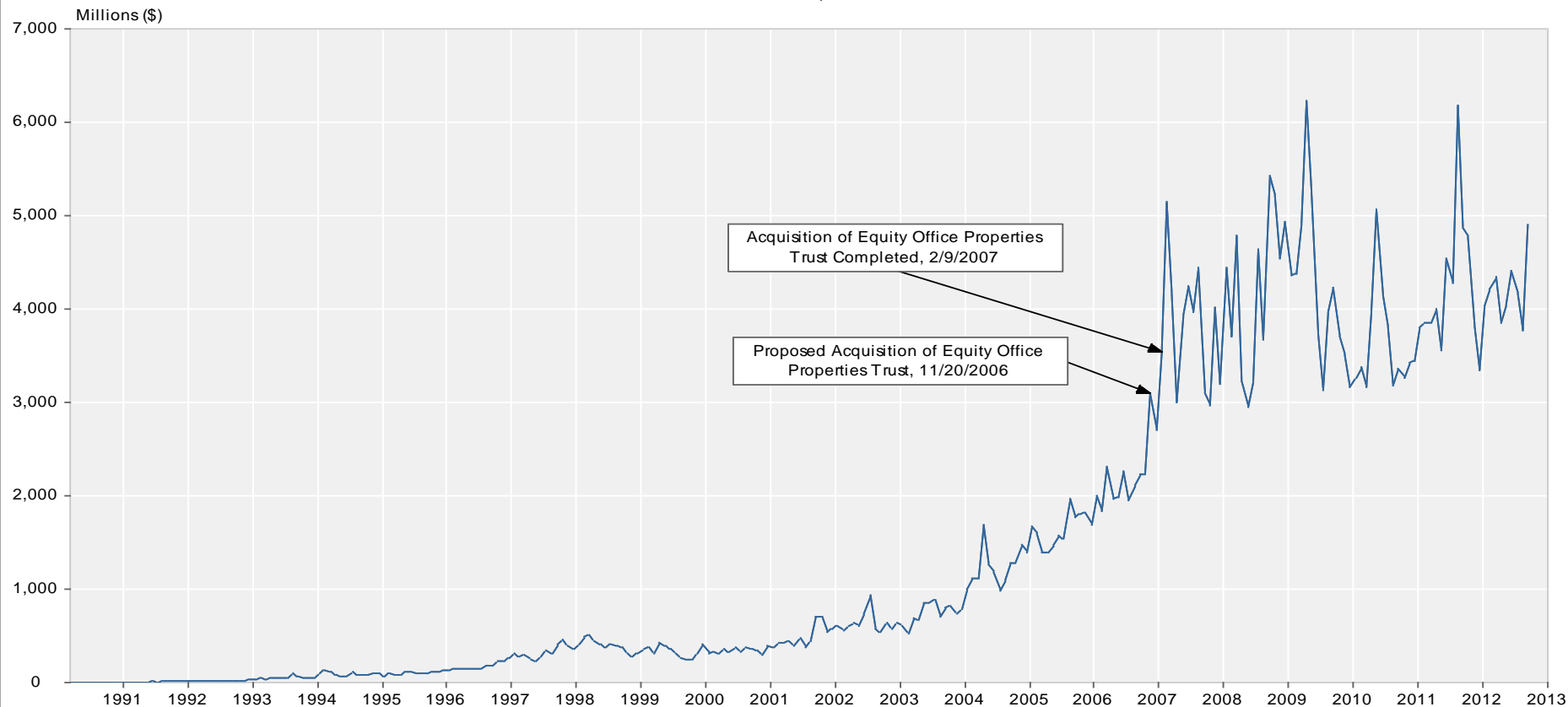


Source: NAREIT®, FactSet.

Average Daily Dollar Trading Volume

FTSE NAREIT All REITs

March 1990 - September 2012



Acquisition of Equity Office Properties Trust Completed, 2/9/2007

Proposed Acquisition of Equity Office Properties Trust, 11/20/2006

Source: NAREIT®, FactSet.

Comparative Total Return Investment Performance
(Data in percent through September 28, 2012)

	FTSE NAREIT	Dow Jones		NASDAQ ¹	Standard & Poor's				Russell 2000			Bond Indexes			NCREIF	
Period	Equity	Industrials ¹	US Total Stock Market	Composite	100	Citigroup 500 Value	Citigroup 500	Citigroup 500 Growth	Utilities	Value	2000	Growth	ML Corp/Govt	ML Mortgage	Hi Yield Corp	NPI
Series Beginning>	(Jan. 1972)	(Dec. 1926)	(Jan. 1972)	(Jan. 1972)	(Feb. 1985)	(Jan. 1975)	(Jan. 1972)	(Jan. 1975)	(Sep. 1989)	(Jan. 1979)	(Jan. 1979)	(Jan. 1979)	(Dec. 1975)	(Jan. 1976)	(Jan. 1972)	(Dec. 1977)
Annual Returns (including current year to date)																
2002	3.82	-16.76	-17.34	-31.52	-37.58	-16.61	-22.10	-28.10	-29.99	-9.14	-20.48	-28.33	10.95	9.42	-1.37	6.75
2003	37.13	25.32	31.64	50.01	49.52	30.35	28.68	27.09	26.26	46.03	47.25	48.54	4.54	3.29	28.96	9.00
2004	31.58	3.15	17.90	8.59	10.44	15.02	10.88	6.99	24.28	22.25	18.33	14.31	4.15	4.74	11.14	14.49
2005	12.17	-0.61	6.32	1.37	1.48	8.70	4.91	1.15	16.84	-1.26	4.55	5.22	2.52	2.63	2.74	20.06
2006	35.06	16.29	15.87	9.52	6.79	20.78	15.79	10.98	20.99	30.94	18.37	13.35	3.83	5.31	11.87	16.60
2007	-15.69	6.43	5.70	9.81	18.67	1.99	5.49	9.13	19.38	-9.78	-1.57	7.05	7.27	6.96	1.88	15.85
2008	-37.73	-33.84	-37.23	-40.54	-41.89	-39.22	-37.00	-34.92	-28.98	-28.92	-33.79	-38.54	4.95	8.30	-26.16	-6.46
2009	27.99	18.82	28.57	43.89	53.54	21.18	26.46	31.57	11.91	20.58	27.17	34.47	4.84	5.76	58.21	-16.85
2010	27.95	11.02	17.49	16.91	19.22	15.10	15.06	15.05	5.46	24.50	26.85	29.09	6.83	5.67	15.12	13.11
2011	8.28	5.53	1.08	-1.80	2.70	-0.48	2.11	4.65	19.91	-5.50	-4.18	-2.91	8.61	6.14	4.98	14.26
2012	16.09	9.98	16.16	19.62	22.89	15.78	16.44	17.00	4.27	14.37	14.23	14.08	4.65	2.87	12.13	-
Quarterly Returns																
2011: Q1	7.50	6.41	6.37	4.83	5.46	6.80	5.92	5.07	2.74	6.60	7.94	9.24	0.34	0.52	3.88	3.36
Q2	2.90	0.77	-0.01	-0.27	-0.60	-1.47	0.10	1.64	6.14	-2.65	-1.61	-0.59	2.34	2.33	1.05	3.94
Q3	-15.07	-12.09	-15.23	-12.91	-8.00	-16.30	-13.87	-11.56	1.55	-21.47	-21.67	-22.25	4.56	2.32	-6.06	3.30
Q4	15.26	11.95	12.12	7.86	6.48	12.98	11.82	10.81	8.28	15.97	15.48	14.99	1.16	0.85	6.46	2.96
2012: Q1	10.49	8.14	12.90	18.67	20.96	12.97	12.59	12.27	-1.62	11.59	12.44	13.28	0.17	0.60	5.34	2.59
Q2	4.00	-2.51	-3.10	-5.06	-5.06	-3.58	-2.75	-2.05	6.55	-3.01	-3.47	-3.94	2.62	1.11	1.83	2.68
Q3	1.03	4.32	6.18	6.17	7.01	6.30	6.35	6.40	-0.53	5.67	5.25	4.84	1.80	1.13	4.53	-
Monthly Returns																
2012: Apr	2.67	0.01	-0.63	-1.46	-1.15	-1.33	-0.63	-0.04	1.82	-1.45	-1.54	-1.64	1.35	0.68	1.05	-
May	-4.41	-6.21	-6.20	-7.19	-7.30	-6.67	-6.01	-5.46	0.57	-6.11	-6.62	-7.13	1.25	0.33	-1.31	-
June	5.97	3.93	3.95	3.81	3.60	4.71	4.12	3.64	4.05	4.82	4.99	5.16	0.00	0.09	2.11	-
July	2.17	1.00	1.02	0.15	1.02	0.86	1.39	1.83	2.54	-1.02	-1.38	-1.74	1.65	0.79	1.90	-
August	0.12	0.63	2.47	4.34	4.91	2.19	2.25	2.31	-4.12	3.08	3.33	3.59	0.08	0.10	1.17	-
September	-1.23	2.65	2.58	1.61	0.97	3.13	2.58	2.14	1.17	3.56	3.28	3.00	0.07	0.24	1.39	-
Compound Annual Returns																
Complete History	12.10	6.89	10.38	8.45	11.90	12.25	10.86	10.86	7.72	13.26	11.40	9.37	8.20	8.31	9.29	9.01
1-Year	33.81	23.13	30.24	29.02	30.85	30.81	30.20	29.65	12.90	32.63	31.91	31.18	5.86	3.74	19.37	8.46
3-Year	20.73	11.43	13.44	13.66	17.65	11.39	13.20	14.93	12.25	11.72	12.99	14.19	6.60	5.06	12.90	10.05
5-Year	2.28	-0.67	1.50	2.90	6.01	-1.56	1.05	3.55	2.42	1.35	2.21	2.96	6.61	6.39	9.34	1.79
10-Year	11.49	5.88	9.75	10.27	12.92	7.79	8.01	8.14	11.27	9.96	10.17	10.96	5.37	5.32	10.99	8.10
15-Year	8.78	3.57	5.67	4.18	6.46	4.49	4.70	4.36	6.54	7.27	5.52	3.68	6.23	6.08	7.01	9.18
20-Year	11.20	7.32	9.22	8.74	11.59	8.34	8.50	8.19	7.12	10.83	9.09	7.16	6.42	6.31	8.10	8.43
25-Year	10.37	6.80	9.06	8.10	11.02	8.25	8.61	8.52	-	9.85	8.16	6.28	7.51	7.55	8.84	7.30
30-Year	12.37	9.44	11.62	9.82	-	11.36	11.44	11.08	-	12.30	10.34	8.22	8.37	8.58	10.29	7.90
35-Year	13.01	8.22	11.72	10.30	-	11.26	11.28	10.84	-	-	-	-	8.11	8.24	9.86	-
40-Year	11.98	6.84	10.31	8.27	-	-	9.98	-	-	-	-	-	-	-	9.44	-
Annualized Volatility of Returns																
Complete History	17.33	15.47	16.01	21.82	25.73	14.96	15.59	16.92	15.07	17.88	20.00	23.35	5.73	6.49	9.29	7.73
1-Year	6.22	4.04	4.87	5.31	5.16	4.93	4.60	4.35	2.47	6.08	6.37	6.68	0.74	0.27	2.42	0.32
3-Year	18.80	13.82	16.06	18.27	17.91	16.27	15.43	15.05	10.04	20.75	21.15	21.73	3.28	2.05	7.68	8.58
5-Year	32.65	17.31	19.65	22.06	22.45	20.81	19.04	18.08	14.47	24.80	24.55	24.85	4.51	2.77	14.03	13.51
10-Year	25.68	14.86	15.80	19.37	20.46	16.79	15.58	15.06	13.94	20.74	20.42	21.17	4.44	2.68	10.71	10.96
15-Year	22.32	15.78	16.71	26.23	28.76	16.25	16.30	17.94	16.69	19.62	21.49	25.21	4.22	2.65	10.11	9.20
20-Year	20.06	14.82	15.35	23.90	26.53	14.94	15.09	16.68	15.44	17.67	19.61	23.29	4.30	2.85	9.00	8.42
25-Year	18.91	15.42	15.83	23.45	26.26	15.24	15.59	17.14	15.07	18.27	20.19	23.57	4.42	3.35	9.07	8.24
30-Year	17.76	15.32	15.65	22.59	-	15.10	15.44	16.91	-	17.77	19.79	23.12	4.83	4.46	8.85	7.71
35-Year	17.43	15.23	15.80	22.18	-	14.99	15.43	16.92	-	-	-	-	5.75	6.59	9.17	-
40-Year	17.31	15.57	16.12	21.97	-	-	15.70	-	-	-	-	-	-	-	9.34	-

¹ Price only returns
Source: NAREIT®, FactSet.

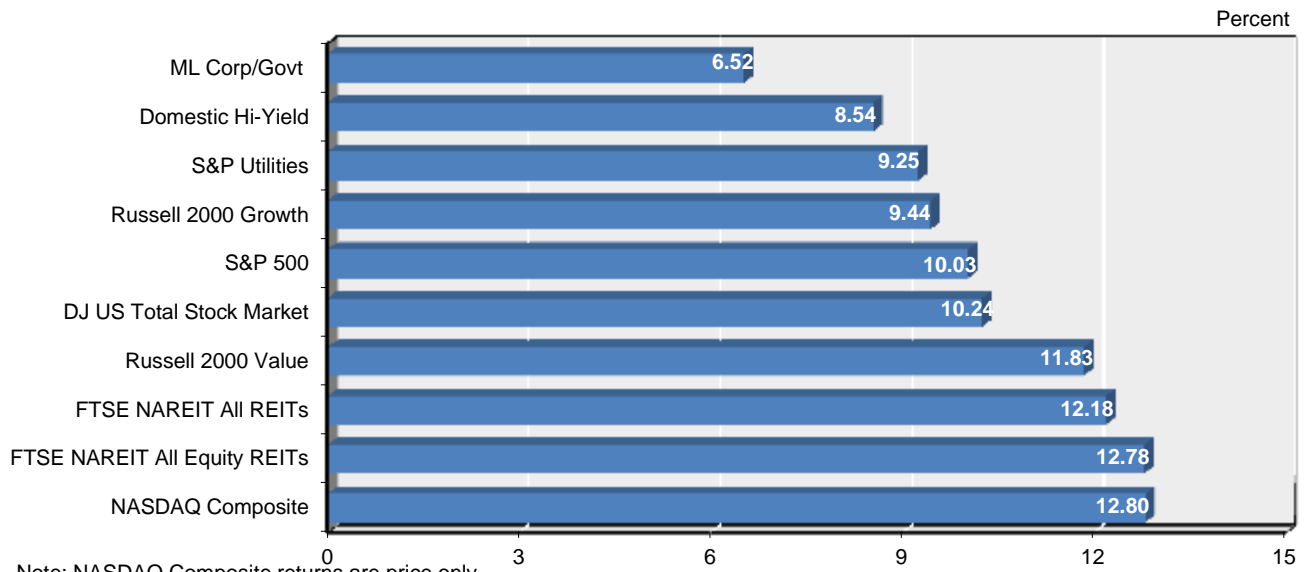
Comparative Total Return Investment Correlation

	FTSE NAREIT All Equity REITs	DJ US Total Stock Market	NASDAQ Composite ¹	NASDAQ 100 ¹	S&P 500/ Citigroup Value	S&P 500	S&P 500/ Citigroup Growth	S&P Utilities	Russell 2000 Value	Russell 2000	Russell 2000 Growth	ML Corp/Govt Bond	ML Mortgage	Domestic High Yield Corp Bond	Dow Jones Industrial Average ¹
Period For Upper Right: September 2002 - September 2012															
FTSE NAREIT All Equity REITs	1.00	0.75	0.67	0.60	0.76	0.73	0.68	0.42	0.83	0.79	0.73	0.14	0.01	0.71	0.68
DJ US Total Stock Market	0.59	1.00	0.95	0.90	0.98	1.00	0.98	0.56	0.93	0.94	0.93	-0.05	-0.13	0.71	0.96
NASDAQ Composite ¹	0.46	0.89	1.00	0.98	0.90	0.94	0.94	0.44	0.88	0.92	0.94	-0.13	-0.20	0.65	0.89
NASDAQ 100 ¹	0.38	0.86	0.97	1.00	0.85	0.90	0.92	0.42	0.80	0.85	0.89	-0.15	-0.21	0.62	0.86
S&P 500/ Citigroup Value	0.63	0.95	0.74	0.71	1.00	0.98	0.93	0.55	0.92	0.91	0.88	-0.03	-0.11	0.66	0.96
S&P 500	0.56	0.99	0.84	0.83	0.96	1.00	0.98	0.57	0.90	0.91	0.90	-0.04	-0.12	0.69	0.97
S&P 500/ Citigroup Growth	0.47	0.96	0.87	0.88	0.87	0.97	1.00	0.57	0.85	0.88	0.89	-0.05	-0.11	0.69	0.95
S&P Utilities	0.35	0.43	0.21	0.21	0.51	0.44	0.35	1.00	0.46	0.47	0.46	0.29	0.17	0.47	0.53
Russell 2000 Value	0.75	0.86	0.76	0.66	0.84	0.81	0.73	0.41	1.00	0.99	0.95	-0.06	-0.17	0.66	0.85
Russell 2000	0.65	0.89	0.89	0.80	0.81	0.83	0.79	0.35	0.96	1.00	0.99	-0.09	-0.21	0.68	0.85
Russell 2000 Growth	0.55	0.88	0.93	0.86	0.75	0.80	0.80	0.30	0.87	0.98	1.00	-0.12	-0.23	0.68	0.83
ML Corp/Govt Bond	0.16	0.16	0.06	0.02	0.17	0.19	0.18	0.28	0.08	0.05	0.03	1.00	0.82	0.18	-0.07
ML Mortgage	0.09	0.16	0.06	0.01	0.17	0.18	0.18	0.19	0.07	0.04	0.02	0.87	1.00	0.02	-0.11
Domestic High Yield Corp Bond	0.60	0.61	0.54	0.49	0.58	0.58	0.54	0.33	0.62	0.61	0.57	0.26	0.23	1.00	0.60
Dow Jones Industrial Average ¹	0.53	0.93	0.75	0.73	0.94	0.95	0.90	0.43	0.78	0.77	0.73	0.14	0.16	0.53	1.00
Period For Lower Left: September 1982 - September 2012															

¹ Price only returns.
 Source: NAREIT®, FactSet.

20-Year Average Annual Total Return

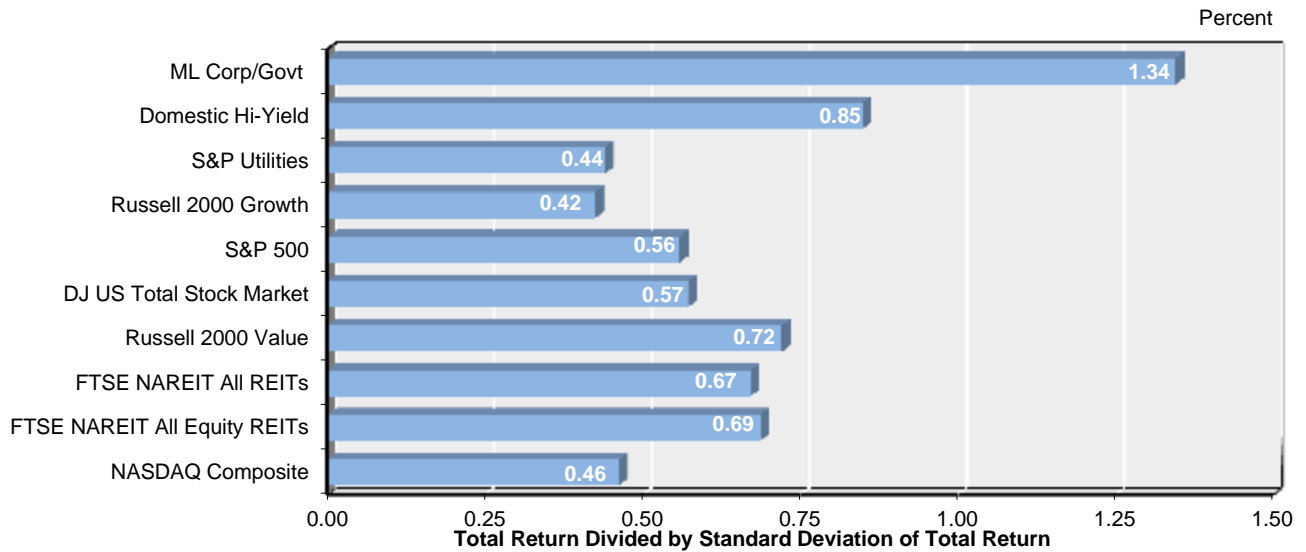
September 1992 - September 2012



Note: NASDAQ Composite returns are price only.
 Source: NAREIT®, FactSet.

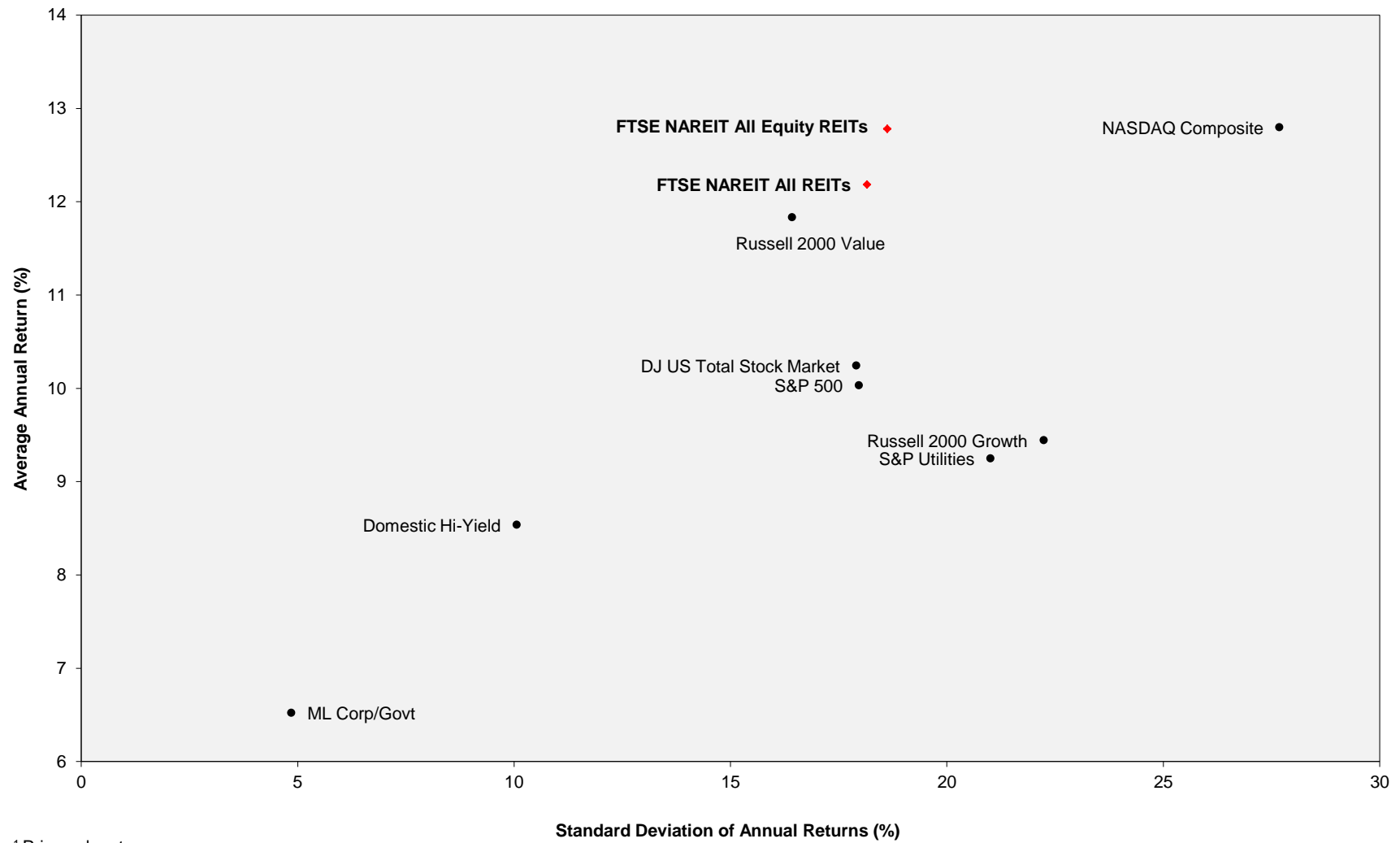
Adjusted 20-Year Average Annual Total Return

September 1992 - September 2012



Note: NASDAQ Composite returns are price only.
 Source: NAREIT®, FactSet.

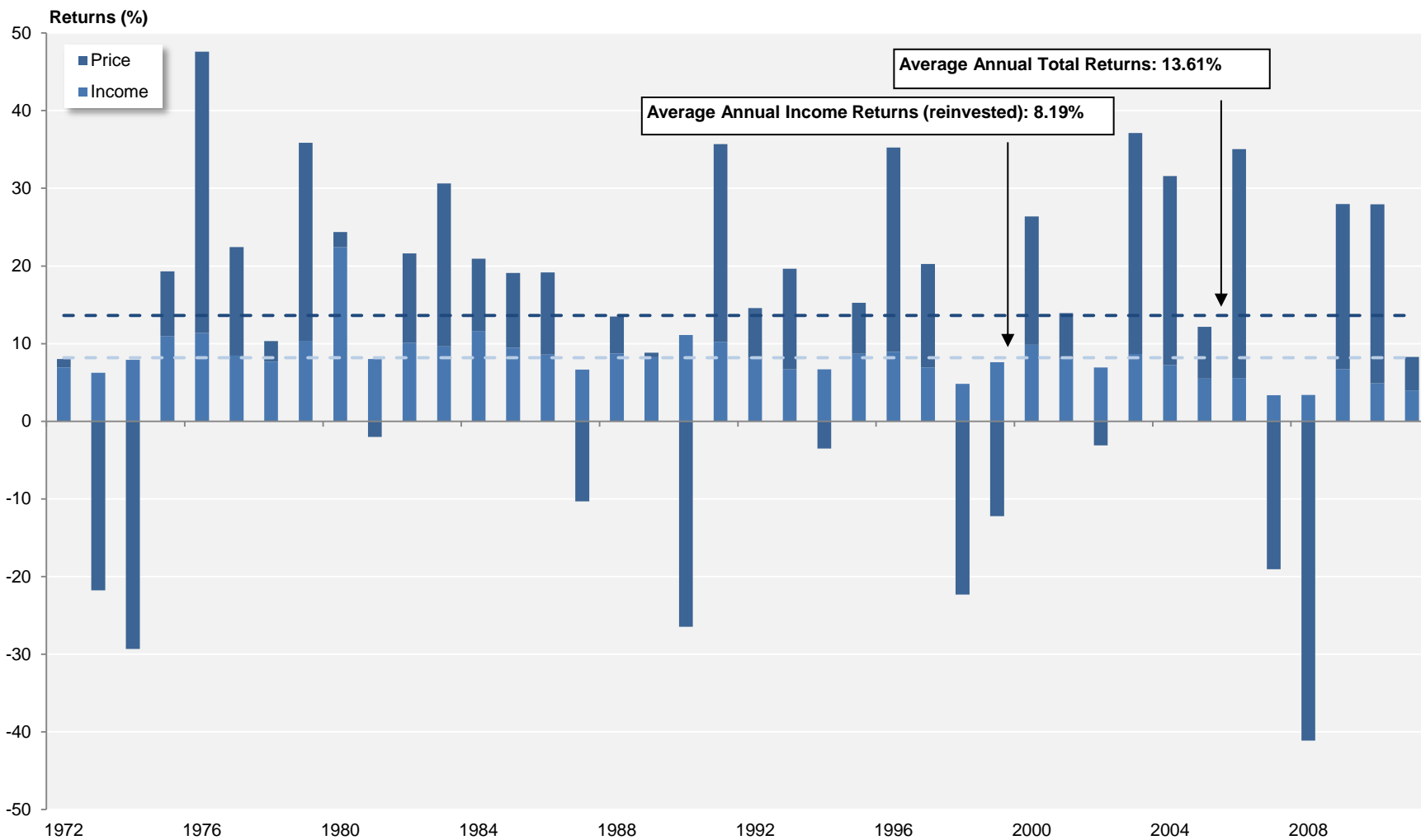
**20-Year Average Annual Total Return v.
 20-Year Standard Deviation of Annual Total Returns**
 September 1992 - September 2012



¹ Price only returns.
 Source: NAREIT®, FactSet.

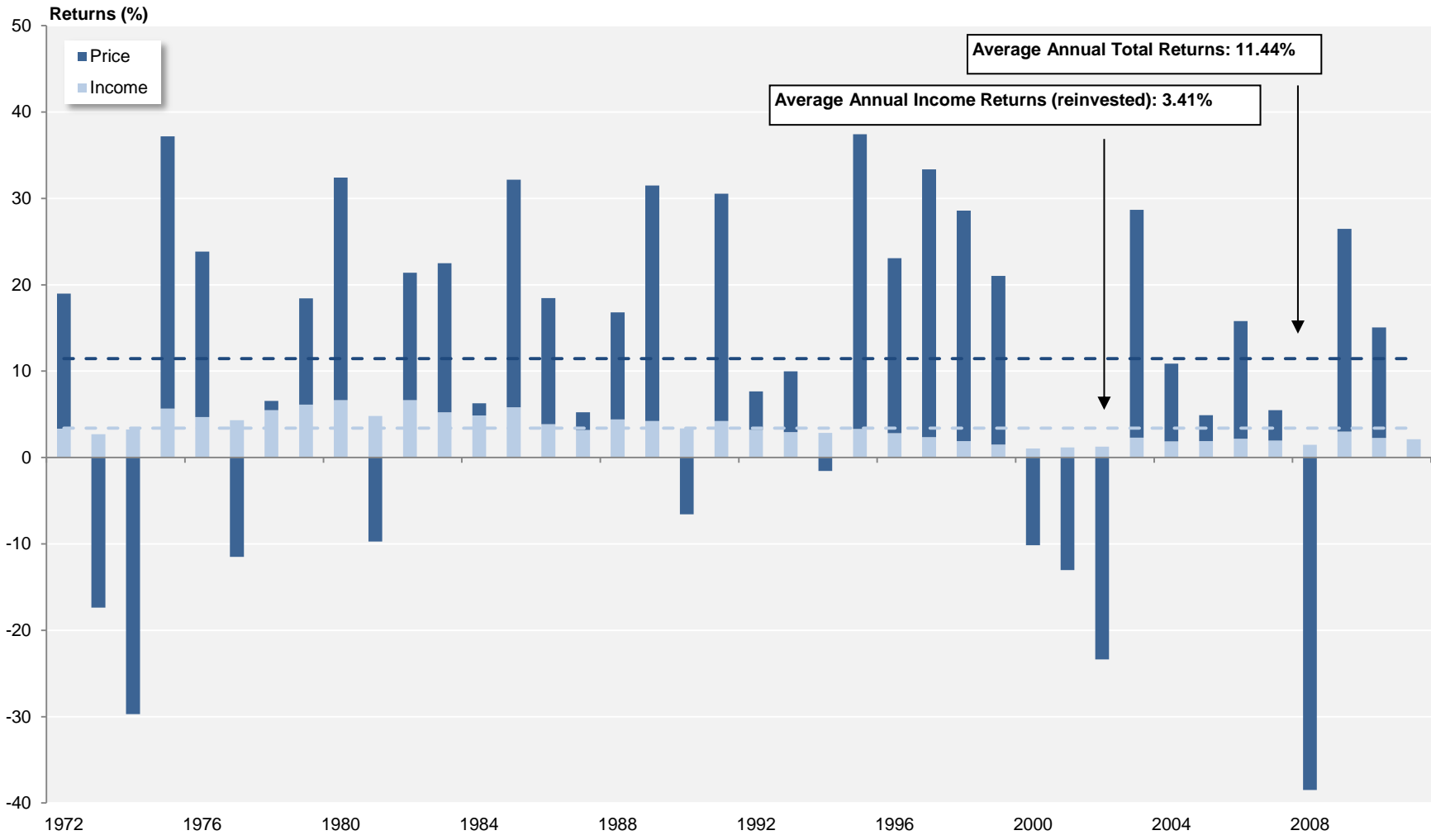
FTSE NAREIT All Equity REITs

Annual Returns
 1972 - 2011



Source: FTSE™, NAREIT®.

S&P 500 Annual Returns 1972 - 2011

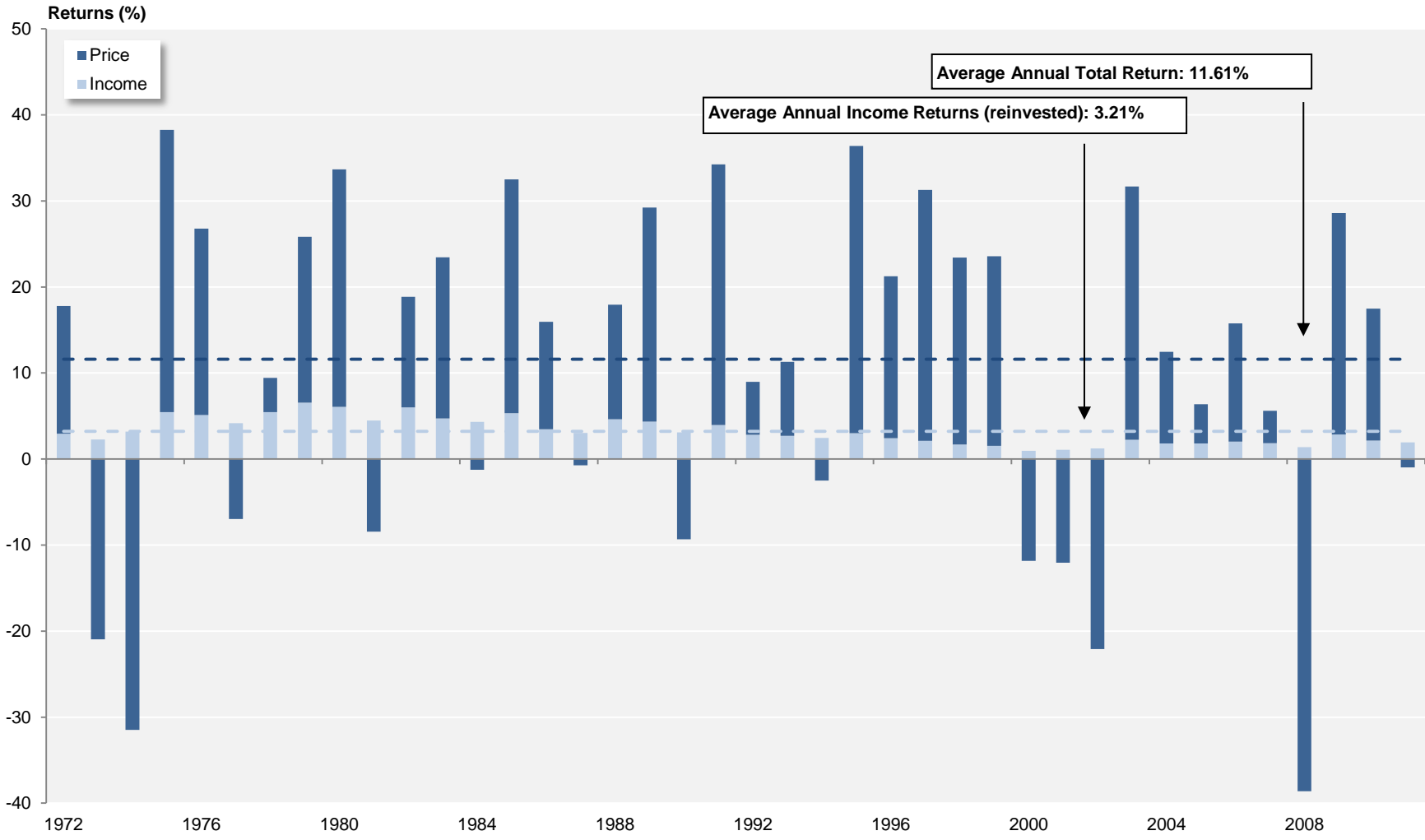


Source: NAREIT®, FactSet.

Dow Jones US Total Stock Market

Annual Returns

1972 - 2011



Source: NAREIT®, FactSet.

FTSE NAREIT US Real Estate Index Series
Annual Price and Total Returns by Property Sector
 1994 - 2011
 (Returns in Percent)

	Industrial/Office		Retail		Residential		Diversified		Health Care		Lodging/Resorts		Self Storage		Timber		Mortgage	
	Total	Price	Total	Price	Total	Price	Total	Price	Total	Price	Total	Price	Total	Price	Total	Price	Total	Price
1994	16.59	10.25	2.98	-3.94	2.31	-3.77	-6.04	-11.54	4.12	-3.54	-8.89	-12.79	8.90	1.31	NA	NA	-24.30	-33.81
1995	25.80	16.94	5.10	-3.20	11.99	3.80	21.16	12.54	24.88	13.93	30.79	22.35	34.40	25.42	NA	NA	63.42	46.82
1996	44.43	35.90	34.61	24.43	29.46	19.72	33.96	22.25	20.40	11.87	49.19	40.32	42.85	34.51	NA	NA	50.86	37.17
1997	27.49	20.90	16.95	9.83	16.31	9.04	21.67	13.15	15.76	7.56	30.09	23.30	3.41	-1.25	NA	NA	3.82	-3.58
1998	-14.44	-19.16	-4.74	-10.87	-8.11	-13.69	-22.11	-26.02	-17.45	-23.65	-52.83	-55.01	-7.20	-10.85	NA	NA	-29.22	-34.29
1999	3.35	-4.07	-11.77	-18.89	9.48	1.81	-14.41	-23.71	-24.83	-31.98	-16.14	-24.05	-8.03	-14.20	NA	NA	-33.22	-40.10
2000	33.38	23.26	17.97	7.72	34.30	25.25	24.10	15.21	25.84	9.97	45.77	30.83	14.69	6.50	NA	NA	15.96	3.35
2001	7.09	-0.41	30.41	20.61	9.04	2.02	12.52	4.80	51.86	39.11	-8.63	-16.32	43.24	36.55	NA	NA	77.35	46.32
2002	0.87	-5.95	21.07	13.11	-5.99	-12.63	4.24	-3.38	4.82	-3.08	-1.49	-7.04	0.56	-5.01	NA	NA	31.08	14.22
2003	33.26	24.62	46.77	38.46	25.90	17.65	40.25	27.87	53.59	41.65	31.69	26.57	38.14	30.75	NA	NA	57.39	38.23
2004	25.24	18.42	40.23	33.23	32.71	24.08	32.41	22.20	20.96	13.35	32.70	29.08	29.70	24.33	NA	NA	18.43	7.90
2005	12.85	6.71	11.80	6.60	13.69	8.31	9.87	4.04	1.79	-4.61	9.76	5.93	26.55	21.98	NA	NA	-23.19	-30.87
2006	39.39	34.06	29.02	24.00	38.93	33.80	38.03	32.10	44.55	35.81	28.16	22.75	40.94	36.66	NA	NA	19.32	8.43
2007	-14.86	-18.17	-15.77	-18.97	-25.21	-28.08	-22.29	-25.40	2.13	-3.47	-22.37	-25.98	-24.82	-27.16	NA	NA	-42.35	-47.69
2008	-50.28	-53.02	-48.36	-51.28	-24.89	-29.08	-28.25	-31.84	-11.98	-17.06	-59.67	-62.72	5.05	1.44	NA	NA	-31.31	-40.46
2009	29.17	21.40	27.17	21.57	30.82	22.81	17.02	12.77	24.62	15.76	67.19	64.53	8.37	4.44	NA	NA	24.63	8.26
2010	17.04	12.52	33.41	28.43	46.01	40.87	23.75	19.03	19.20	12.71	42.77	40.51	29.29	25.20	NA	NA	22.60	7.01
2011	-1.47	-5.16	12.20	8.27	15.37	11.82	2.82	-1.32	13.63	7.62	-14.31	-16.38	35.22	31.04	7.65	3.77	-2.42	-15.14

FTSE NAREIT US Real Estate Index Series
Annual Price and Total Returns by Property Subsector
 1994 - 2011
 (Returns in Percent)

	Industrial/Office						Retail						Residential				Mortgage			
	Industrial		Office		Mixed		Shopping Centers		Regional Malls		Free Standing		Apartments		Manufactured Homes		Home Financing		Commercial Financing	
	Total	Price	Total	Price	Total	Price	Total	Price	Total	Price	Total	Price	Total	Price	Total	Price	Total	Price	Total	Price
1994	18.66	13.37	2.86	-2.68	NA	NA	1.33	-5.49	8.77	1.41	-5.46	-17.52	2.19	-3.91	3.31	-2.59	NA	NA	NA	NA
1995	16.21	8.55	38.79	28.34	NA	NA	7.40	-0.74	3.00	-5.74	31.56	20.28	12.26	3.94	10.68	2.87	NA	NA	NA	NA
1996	37.22	28.99	51.82	42.85	40.79	32.74	33.49	23.37	45.27	34.10	30.95	20.38	28.93	19.07	34.93	26.58	NA	NA	NA	NA
1997	19.02	12.76	29.01	22.56	27.91	21.01	21.44	14.36	13.69	6.58	17.70	10.22	16.04	8.77	16.17	9.33	NA	NA	NA	NA
1998	-11.74	-16.32	-17.35	-22.14	-8.85	-13.52	-6.99	-13.00	-2.62	-8.17	-6.25	-11.97	-8.77	-14.37	-0.86	-6.10	NA	NA	NA	NA
1999	3.90	-4.03	4.26	-3.11	-0.72	-7.62	-10.71	-18.03	-14.58	-21.22	-4.89	-12.31	10.72	2.87	-2.80	-8.77	NA	NA	NA	NA
2000	28.62	14.48	35.45	26.62	31.97	22.63	15.10	4.27	23.50	13.63	8.94	-0.34	35.53	26.40	20.94	12.62	9.16	-1.60	25.60	10.13
2001	7.42	0.53	6.65	-0.79	8.15	-0.36	29.89	19.83	31.87	22.87	23.95	12.06	8.66	1.68	13.72	6.37	102.02	68.36	37.37	10.17
2002	17.32	10.23	-6.29	-12.74	8.56	0.87	17.72	9.63	24.56	16.76	21.76	13.65	-6.15	-12.88	-4.05	-9.61	28.25	11.40	38.50	21.27
2003	33.13	25.76	34.01	24.84	31.30	22.76	43.12	34.99	52.24	43.75	35.92	27.70	25.49	17.22	29.99	21.51	42.73	22.74	84.67	68.53
2004	34.10	27.78	23.28	16.22	19.59	12.99	36.25	29.63	45.01	37.70	32.87	26.03	34.72	26.50	6.40	-8.40	24.91	12.89	7.45	-0.10
2005	15.41	10.76	13.11	6.76	7.40	-0.12	9.27	3.59	16.54	11.76	-0.49	-5.44	14.65	9.12	-2.58	-6.04	-25.95	-33.94	-16.06	-22.82
2006	28.92	24.46	45.22	39.76	28.28	22.08	34.87	29.74	23.83	19.19	30.74	23.65	39.95	34.77	15.35	11.57	14.75	3.87	30.31	19.61
2007	0.38	-3.17	-18.96	-22.01	-33.09	-36.66	-17.68	-20.98	-15.85	-18.80	-0.43	-5.26	-25.43	-28.30	-19.34	-22.24	-38.23	-43.41	-48.79	-54.29
2008	-67.47	-69.38	-41.07	-44.02	-33.99	-39.27	-38.84	-42.23	-60.60	-62.79	-15.09	-20.32	-25.13	-29.33	-20.18	-24.06	-20.02	-30.25	-74.84	-78.24
2009	12.17	4.84	35.55	28.04	34.90	25.34	-1.66	-7.44	62.99	59.53	25.93	16.15	30.40	22.37	40.92	33.33	28.19	11.18	-40.99	-46.15
2010	18.89	13.60	18.41	14.50	8.75	2.82	30.78	25.83	34.64	30.15	37.37	29.32	47.04	41.89	27.02	22.11	21.02	5.04	41.99	33.88
2011	-5.16	-8.74	-0.76	-4.21	2.67	-2.76	-0.73	-4.48	22.00	18.23	0.43	-4.94	15.10	11.63	20.38	15.48	-0.87	-14.41	-11.34	-18.54

Equity Market Capitalization
 (Millions of dollars at year end)

Year	<u>All REITs</u>		<u>Equity</u>			<u>Mortgage</u>			<u>Hybrid¹</u>		
	Number of REITs	Market Capitalization	Number of REITs	Market Capitalization	Percent of All REITs	Number of REITs	Market Capitalization	Percent of All REITs	Number of REITs	Market Capitalization	Percent of All REITs
1971	34	1,494.3	12	332.0	22.2	12	570.8	38.2	10	591.6	39.6
1972	46	1,880.9	17	377.3	20.1	18	774.7	41.2	11	728.9	38.8
1973	53	1,393.5	20	336.0	24.1	22	517.3	37.1	11	540.2	38.8
1974	53	712.4	19	241.9	34.0	22	238.8	33.5	12	231.7	32.5
1975	46	899.7	12	275.7	30.6	22	312.0	34.7	12	312.0	34.7
1976	62	1,308.0	27	409.6	31.3	22	415.6	31.8	13	482.8	36.9
1977	69	1,528.1	32	538.1	35.2	19	398.3	26.1	18	591.6	38.7
1978	71	1,412.4	33	575.7	40.8	19	340.3	24.1	19	496.4	35.1
1979	71	1,754.0	32	743.6	42.4	19	377.1	21.5	20	633.3	36.1
1980	75	2,298.6	35	942.2	41.0	21	509.5	22.2	19	846.8	36.8
1981	76	2,438.9	36	977.5	40.1	21	541.3	22.2	19	920.1	37.7
1982	66	3,298.6	30	1,071.4	32.5	20	1,133.4	34.4	16	1,093.8	33.2
1983	59	4,257.2	26	1,468.6	34.5	19	1,460.0	34.3	14	1,328.7	31.2
1984	59	5,085.3	25	1,794.5	35.3	20	1,801.3	35.4	14	1,489.4	29.3
1985	82	7,674.0	37	3,270.3	42.6	32	3,162.4	41.2	13	1,241.2	16.2
1986	96	9,923.6	45	4,336.1	43.7	35	3,625.8	36.5	16	1,961.7	19.8
1987	110	9,702.4	53	4,758.5	49.0	38	3,161.4	32.6	19	1,782.4	18.4
1988	117	11,435.2	56	6,141.7	53.7	40	3,620.8	31.7	21	1,672.6	14.6
1989	120	11,662.2	56	6,769.6	58.0	43	3,536.3	30.3	21	1,356.3	11.6
1990	119	8,737.1	58	5,551.6	63.5	43	2,549.2	29.2	18	636.3	7.3
1991	138	12,968.2	86	8,785.5	67.7	28	2,586.3	19.9	24	1,596.4	12.3
1992	142	15,912.0	89	11,171.1	70.2	30	2,772.8	17.4	23	1,968.1	12.4
1993	189	32,158.7	135	26,081.9	81.1	32	3,398.5	10.6	22	2,678.2	8.3
1994	226	44,306.0	175	38,812.0	87.6	29	2,502.7	5.6	22	2,991.3	6.8
1995	219	57,541.3	178	49,913.0	86.7	24	3,395.4	5.9	17	4,232.9	7.4
1996	199	88,776.3	166	78,302.0	88.2	20	4,778.6	5.4	13	5,695.8	6.4
1997	211	140,533.8	176	127,825.3	91.0	26	7,370.3	5.2	9	5,338.2	3.8
1998	210	138,301.4	173	126,904.5	91.8	28	4,916.2	3.6	9	6,480.7	4.7
1999	203	124,261.9	167	118,232.7	95.1	26	4,441.7	3.6	10	1,587.5	1.3
2000	189	138,715.4	158	134,431.0	96.9	22	2,652.4	1.9	9	1,632.0	1.2
2001	182	154,898.6	151	147,092.1	95.0	22	3,990.5	2.6	9	3,816.0	2.5
2002	176	161,937.3	149	151,271.5	93.4	20	7,146.4	4.4	7	3,519.4	2.2
2003	171	224,211.9	144	204,800.4	91.3	20	14,186.5	6.3	7	5,225.0	2.3
2004	190	305,025.1	150	273,629.0	89.7	33	24,774.1	8.1	7	6,622.0	2.2
2005	197	330,691.3	152	301,491.0	91.2	37	23,393.7	7.1	8	5,806.6	1.8
2006	183	438,071.1	138	400,741.4	91.5	38	29,195.3	6.7	7	8,134.3	1.9
2007	152	312,009.0	118	288,694.6	92.5	29	19,054.1	6.1	5	4,260.3	1.4
2008	136	191,651.0	113	176,237.7	92.0	20	14,280.5	7.5	3	1,132.9	0.6
2009	142	271,199.1	115	248,355.1	91.6	23	22,103.2	8.2	4	740.8	0.3
2010	153	389,295.4	126	358,908.2	92.2	27	30,387.2	7.8	--	--	--
2011	160	450,500.6	130	407,528.9	90.5	30	42,971.7	9.5	--	--	--

Note:

Market capitalization equals share price multiplied by the number of shares outstanding and does not include Operating Partnership Units.

¹The FTSE NAREIT Hybrid REIT Index was discontinued on December 17, 2010.

Source: NAREIT®

REITs in the FTSE NAREIT All REITs Index and S&P Equity Indexes

(Ranked by equity market capitalization)

September 28, 2012

Number of REITs (1)	Company (2)	Ticker Symbol (3)	Investment Sector (4)	Property Subsector (5)	Equity Market Capitalization (\$M) ¹				
					S&P REITs (6)	FTSE NAREIT All REITs (7)	Percent of Sector (8)	Percent of S&P REITs (9)	Percent of FTSE NAREIT All REITs (10)
Summary by Investment Sector, Property Sector and Property Subsector									
31	Industrial/Office				71,118.7	86,995.5		16.63	15.03
19	Office				43,658.5	54,441.9		10.21	9.41
7	Industrial				17,631.1	21,868.1		4.12	3.78
5	Mixed				9,829.1	10,685.5		2.30	1.85
34	Retail				101,233.6	137,907.1		23.67	23.83
20	Shopping Centers				32,098.3	41,612.2		7.51	7.19
8	Regional Malls				59,789.5	83,626.0		13.98	14.45
6	Free Standing				9,345.8	12,669.0		2.19	2.19
19	Residential				69,064.0	75,683.0		16.15	13.08
16	Apartments				69,064.0	71,506.6		16.15	12.35
3	Manufactured Homes				0.0	4,176.4		0.00	0.72
15	Diversified				19,328.2	35,516.8		4.52	6.14
16	Lodging/Resorts				18,641.0	28,046.1		4.36	4.85
4	Self Storage				28,849.8	30,427.2		6.75	5.26
11	Health Care				62,413.9	63,842.0		14.60	11.03
4	Timber				28,648.4	28,648.4		6.70	4.95
1	Infrastructure				28,315.5	28,327.1		6.62	4.89
32	Mortgage REITs				0.0	63,388.3		0.00	10.95
18	Home Financing				0.0	54,528.2		0.00	9.42
14	Commercial Financing				0.0	8,860.1		0.00	1.53
168	Industry Totals				427,613.1	578,781.6		100.00	100.00
Distribution of REITs by S&P Index									
16	S&P 500 Large Cap					271,988		63.61	46.99
27	S&P 400 Mid Cap					111,849		26.16	19.32
30	S&P 600 Small Cap					43,777		10.24	7.56
73	Total S&P REITs					427,613.1		100.00	73.88

REITs in the FTSE NAREIT All REITs Index and S&P Equity Indexes

(Ranked by equity market capitalization)

September 28, 2012

Summary of REITs in S&P Equity Indexes

	<u>Equity Market Capitalization¹</u>
S&P 500 Constituents	
1 Simon Property Group Inc.	46,618.5
2 American Tower Corp	28,315.5
3 Public Storage	23,683.2
4 HCP Inc.	19,105.2
5 Ventas Inc.	18,315.8
6 Equity Residential	17,294.9
7 Boston Properties Inc.	16,571.1
8 Prologis Inc.	16,078.8
9 Vornado Realty Trust	14,932.6
10 Weyerhaeuser Co.	14,009.5
11 Health Care REIT Inc.	13,195.3
12 AvalonBay Communities Inc.	13,178.8
13 Host Hotels & Resorts Inc.	11,542.4
14 Kimco Realty Corp.	8,226.2
15 Plum Creek Timber Company Inc.	7,137.5
16 Apartment Investment & Management Co.	3,782.7
16 Subtotal	271,987.9
S&P 400 Mid Cap Constituents	
1 Macerich Co.	7,549.6
2 SL Green Realty Corp.	7,177.0
3 Federal Realty Investment Trust	6,686.6
4 UDR Inc.	6,210.1
5 Rayonier Inc. REIT	6,001.3
6 Realty Income Corp.	5,446.6
7 Essex Property Trust Inc.	5,398.1
8 Camden Property Trust	5,390.4
9 Taubman Centers Inc.	4,734.1
10 Alexandria Real Estate Equities Inc.	4,615.3
11 Regency Centers Corp.	4,380.8
12 Liberty Property Trust	4,252.3
13 American Campus Communities Inc.	4,036.2
14 Duke Realty Corp.	3,964.5
15 Senior Housing Properties Trust	3,843.6
16 BRE Properties Inc.	3,596.4
17 Weingarten Realty Investors	3,396.7
18 National Retail Properties Inc.	3,299.8
19 Home Properties Inc.	3,057.1
20 Hospitality Properties Trust	2,934.0
21 BioMed Realty Trust Inc.	2,879.6
22 Equity One Inc.	2,492.8
23 Highwoods Properties Inc.	2,481.4
24 Omega Healthcare Investors Inc.	2,470.2
25 Mack-Cali Realty Corp.	2,335.5
26 Corporate Office Properties Trust	1,718.7
27 Potlatch Corp.	1,500.1
27 Subtotal	111,848.8
S&P 600 Small Cap Constituents	
1 Extra Space Storage Inc.	3,463.0
2 Kilroy Realty Corp.	3,310.7
3 Tanger Factory Outlet Centers Inc.	3,035.3
4 Mid-America Apartment Communities Inc.	2,684.5
5 Post Properties Inc.	2,599.2
6 LaSalle Hotel Properties	2,285.5
7 EPR Properties	2,065.9
8 DiamondRock Hospitality Co.	1,879.2
9 Colonial Properties Trust	1,835.7
10 Healthcare Realty Trust Inc.	1,794.0
11 Sovran Self Storage Inc.	1,703.6
12 PS Business Parks Inc.	1,612.2
13 EastGroup Properties Inc.	1,552.3
14 Lexington Realty Trust	1,506.8
15 Medical Properties Trust Inc.	1,404.1
16 Acadia Realty Trust	1,144.1
17 Government Properties Income Trust	1,100.1
18 LTC Properties Inc.	966.2
19 Franklin Street Properties Corp.	918.1
20 Pennsylvania Real Estate Investment Trust	887.4
21 Saul Centers Inc.	879.1
22 Cousins Properties Inc.	822.9
23 Sabra Healthcare REIT Inc.	737.7
24 Inland Real Estate Corp.	732.1
25 Getty Realty Corp.	599.4
26 Universal Health Realty Income Trust	581.9
27 Parkway Properties Inc.	551.0
28 Urstadt Biddle Properties Inc. Cl A	421.1
29 Cedar Realty Trust Inc	379.1
30 Kite Realty Group Trust	324.4
30 Subtotal	43,776.5
73 Total	427,613.1

REITs in the FTSE NAREIT All REITs Index and S&P Equity Indexes

(Ranked by equity market capitalization)

September 28, 2012

Property Sector: Industrial/Office									
1	Boston Properties Inc.	BXP	Equity	Office	S&P 500	16,571.1	30.44	3.88	2.86
2	SL Green Realty Corp.	SLG	Equity	Office	S&P 400	7,177.0	13.18	1.68	1.24
3	Alexandria Real Estate Equities Inc.	ARE	Equity	Office	S&P 400	4,615.3	8.48	1.08	0.80
4	Kilroy Realty Corp.	KRC	Equity	Office	S&P 600	3,310.7	6.08	0.77	0.57
5	Douglas Emmett Inc.	DEI	Equity	Office		3,220.5	5.92		0.56
6	Piedmont Office Realty Trust Inc.	PDM	Equity	Office		2,928.7	5.38		0.51
7	BioMed Realty Trust Inc.	BMR	Equity	Office	S&P 400	2,879.6	5.29	0.67	0.50
8	Highwoods Properties Inc.	HIW	Equity	Office	S&P 400	2,481.4	4.56	0.58	0.43
9	Mack-Cali Realty Corp.	CLI	Equity	Office	S&P 400	2,335.5	4.29	0.55	0.40
10	Brandywine Realty Trust	BDN	Equity	Office		1,739.9	3.20		0.30
11	Corporate Office Properties Trust	OFC	Equity	Office	S&P 400	1,718.7	3.16	0.40	0.30
12	CommonWealth REIT	CWH	Equity	Office		1,217.9	2.24		0.21
13	Government Properties Income Trust	GOV	Equity	Office	S&P 600	1,100.1	2.02	0.26	0.19
14	Franklin Street Properties Corp.	FSP	Equity	Office	S&P 600	918.1	1.69	0.21	0.16
15	Hudson Pacific Properties Inc.	HPP	Equity	Office		873.5	1.60		0.15
16	Parkway Properties Inc.	PKY	Equity	Office	S&P 600	551.0	1.01	0.13	0.10
17	Healthcare Trust of America Inc	HTA	Equity	Office		415.8	0.76		0.07
18	Mission West Properties	MSW	Equity	Office		195.8	0.36		0.03
19	MPG Office Trust Inc.	MPG	Equity	Office		191.2	0.35		0.03
19 Subsector Totals						54,441.9	100.00	10.21	9.41
11 S&P Subsector Total						43,658.5			
Property Sector: Industrial									
1	Prologis Inc.	PLD	Equity	Industrial	S&P 500	16,078.8	73.53	3.76	2.78
2	DCT Industrial Trust Inc.	DCT	Equity	Industrial		1,725.1	7.89		0.30
3	EastGroup Properties Inc.	EGP	Equity	Industrial	S&P 600	1,552.3	7.10	0.36	0.27
4	First Industrial Realty Trust Inc.	FR	Equity	Industrial		1,291.8	5.91		0.22
5	STAG Industrial Inc.	STAG	Equity	Industrial		557.3	2.55		0.10
6	Monmouth Real Estate Investment Corp. (CI A)	MNR	Equity	Industrial		452.5	2.07		0.08
7	Terreno Realty Corp.	TRNO	Equity	Industrial		210.3	0.96		0.04
7 Subsector Totals						21,868.1	100.00	4.12	3.78
2 S&P Subsector Total						17,631.1			
Property Sector: Mixed									
1	Liberty Property Trust	LRY	Equity	Mixed	S&P 400	4,252.3	39.80	0.99	0.73
2	Duke Realty Corp.	DRE	Equity	Mixed	S&P 400	3,964.5	37.10	0.93	0.68
3	PS Business Parks Inc.	PSB	Equity	Mixed	S&P 600	1,612.2	15.09	0.38	0.28
4	First Potomac Realty Trust	FPO	Equity	Mixed		656.5	6.14		0.11
5	Gladstone Commercial Corp.	GOOD	Equity	Mixed		200.0	1.87		0.03
5 Subsector Totals						10,685.5	100.00	2.30	1.85
3 S&P Subsector Total						9,829.1			
31 Sector Totals						86,995.5		16.63	15.03
16 S&P Sector Total						71,118.7			
Property Sector: Retail									
1	Kimco Realty Corp.	KIM	Equity	Shopping Centers	S&P 500	8,226.2	19.77	1.92	1.42
2	Federal Realty Investment Trust	FRT	Equity	Shopping Centers	S&P 400	6,686.6	16.07	1.56	1.16
3	DDR Corp	DDR	Equity	Shopping Centers		4,671.5	11.23		0.81
4	Regency Centers Corp.	REG	Equity	Shopping Centers	S&P 400	4,380.8	10.53	1.02	0.76
5	Weingarten Realty Investors	WRI	Equity	Shopping Centers	S&P 400	3,396.7	8.16	0.79	0.59
6	Tanger Factory Outlet Centers Inc.	SKT	Equity	Shopping Centers	S&P 600	3,035.3	7.29	0.71	0.52
7	Equity One Inc.	EQY	Equity	Shopping Centers	S&P 400	2,492.8	5.99	0.58	0.43
8	Alexander's Inc.	ALX	Equity	Shopping Centers		2,171.9	5.22		0.38
9	Acadia Realty Trust	AKR	Equity	Shopping Centers	S&P 600	1,144.1	2.75	0.27	0.20
10	Retail Properties of America Inc.	RPAI	Equity	Shopping Centers		963.2	2.31		0.17
11	Saul Centers Inc.	BFS	Equity	Shopping Centers	S&P 600	879.1	2.11	0.21	0.15
12	Inland Real Estate Corp.	IRC	Equity	Shopping Centers	S&P 600	732.1	1.76	0.17	0.13
13	Retail Opportunity Investment Corp.	ROIC	Equity	Shopping Centers		659.1	1.58		0.11
14	Ramco-Gershenson Properties Trust	RPT	Equity	Shopping Centers		586.1	1.41		0.10
15	Urstadt Biddle Properties Inc. CI A	UBA	Equity	Shopping Centers	S&P 600	421.1	1.01	0.10	0.07
16	Excel Trust Inc.	EXL	Equity	Shopping Centers		388.9	0.93		0.07
17	Cedar Realty Trust Inc	CDR	Equity	Shopping Centers	S&P 600	379.1	0.91	0.09	0.07
18	Kite Realty Group Trust	KRG	Equity	Shopping Centers	S&P 600	324.4	0.78	0.08	0.06
19	AmREIT, Inc.	AMRE	Equity	Shopping Centers		58.7	0.14		0.01
20	Roberts Realty Investors Inc.	RPI	Equity	Shopping Centers		14.5	0.03		0.00
20 Subsector Totals						41,612.2	100.00	7.51	7.19
12 S&P Subsector Total						32,098.3			
Property Sector: Regional Malls									
1	Simon Property Group Inc.	SPG	Equity	Regional Malls	S&P 500	46,618.5	55.75	10.90	8.05
2	General Growth Properties Inc.	GGP	Equity	Regional Malls		18,277.8	21.86		3.16
3	Macerich Co.	MAC	Equity	Regional Malls	S&P 400	7,549.6	9.03	1.77	1.30
4	Taubman Centers Inc.	TCO	Equity	Regional Malls	S&P 400	4,734.1	5.66	1.11	0.82
5	CBL & Associates Properties Inc.	CBL	Equity	Regional Malls		3,383.7	4.05		0.58
6	Glimcher Realty Trust	GRT	Equity	Regional Malls		1,473.5	1.76		0.25
7	Pennsylvania Real Estate Investment Trust	PEI	Equity	Regional Malls	S&P 600	887.4	1.06	0.21	0.15
8	Rouse Properties Inc.	RSE	Equity	Regional Malls		701.4	0.84		0.12
8 Subsector Totals						83,626.0	100.00	13.98	14.45
4 S&P Subsector Total						59,789.5			
Property Sector: Free Standing									
1	Realty Income Corp.	O	Equity	Free Standing	S&P 400	5,446.6	42.99	1.27	0.94
2	National Retail Properties Inc.	NNN	Equity	Free Standing	S&P 400	3,299.8	26.05	0.77	0.57
3	American Realty Capital Trust Inc	ARCT	Equity	Free Standing		1,858.9	14.67		0.32
4	Spirit Realty Capital Inc.	SRC	Equity	Free Standing		1,172.8	9.26		0.20
5	Getty Realty Corp.	GTY	Equity	Free Standing	S&P 600	599.4	4.73	0.14	0.10
6	Agree Realty Corp.	ADC	Equity	Free Standing		291.5	2.30		0.05
6 Subsector Totals						12,669.0	100.00	2.19	2.19
3 S&P Subsector Total						9,345.8			
34 Sector Totals						137,907.1		23.67	23.83
19 S&P Sector Total						101,233.6			

REITs in the FTSE NAREIT All REITs Index and S&P Equity Indexes

(Ranked by equity market capitalization)

September 28, 2012

Property Sector: Residential									
1	Equity Residential	EQR	Equity	Apartments	S&P 500	17,294.9	24.19	4.04	2.99
2	AvalonBay Communities Inc.	AVB	Equity	Apartments	S&P 500	13,178.8	18.43	3.08	2.28
3	UDR Inc.	UDR	Equity	Apartments	S&P 400	6,210.1	8.68	1.45	1.07
4	Essex Property Trust Inc.	ESS	Equity	Apartments	S&P 400	5,398.1	7.55	1.26	0.93
5	Camden Property Trust	CPT	Equity	Apartments	S&P 400	5,390.4	7.54	1.26	0.93
6	American Campus Communities Inc.	ACC	Equity	Apartments	S&P 400	4,036.2	5.64	0.94	0.70
7	Apartment Investment & Management Co.	AIV	Equity	Apartments	S&P 500	3,782.7	5.29	0.88	0.65
8	BRE Properties Inc.	BRE	Equity	Apartments	S&P 400	3,596.4	5.03	0.84	0.62
9	Home Properties Inc.	HME	Equity	Apartments	S&P 400	3,057.1	4.28	0.71	0.53
10	Mid-America Apartment Communities Inc.	MAA	Equity	Apartments	S&P 600	2,684.5	3.75	0.63	0.46
11	Post Properties Inc.	PPS	Equity	Apartments	S&P 600	2,599.2	3.63	0.61	0.45
12	Colonial Properties Trust	CLP	Equity	Apartments	S&P 600	1,835.7	2.57	0.43	0.32
13	Education Realty Trust Inc.	EDR	Equity	Apartments		1,231.9	1.72		0.21
14	Associated Estates Realty Corp.	AEC	Equity	Apartments		750.4	1.05		0.13
15	Campus Crest Communities Inc.	CCG	Equity	Apartments		416.4	0.58		0.07
16	Preferred Apartment Communities Inc.	APTS	Equity	Apartments		44.0	0.06		0.01
16 Subsector Totals						71,506.6	100.00	16.15	12.35
12 S&P Subsector Total						69,064.0			
Property Sector: Manufactured Homes									
1	Equity Lifestyle Properties Inc.	ELS	Equity	Manufactured Homes		2,814.0	67.38		0.49
2	Sun Communities Inc.	SUI	Equity	Manufactured Homes		1,167.1	27.94		0.20
3	UMH Properties Inc.	UMH	Equity	Manufactured Homes		195.3	4.68		0.03
3 Subsector Totals						4,176.4	100.00	0.00	0.72
0 S&P Subsector Total						0.0			
19 Sector Totals						75,683.0		16.15	13.08
12 S&P Sector Total						69,064.0			
Property Sector: Diversified									
1	Vornado Realty Trust	VNO	Equity		S&P 500	14,932.6	42.04	3.49	2.58
2	Digital Realty Trust Inc.	DLR	Equity			8,505.5	23.95		1.47
3	EPR Properties	EPR	Equity		S&P 600	2,065.9	5.82	0.48	0.36
4	Washington Real Estate Investment Trust	WRE	Equity			1,767.3	4.98		0.31
5	Dupont Fabros Technology Inc.	DFT	Equity			1,596.6	4.50		0.28
6	Lexington Realty Trust	LXP	Equity		S&P 600	1,506.8	4.24	0.35	0.26
7	American Assets Trust Inc.	AAT	Equity			1,052.4	2.96		0.18
8	Cousins Properties Inc.	CUZ	Equity		S&P 600	822.9	2.32	0.19	0.14
9	Select Income REIT	SIR	Equity			768.1	2.16		0.13
10	Investors Real Estate Trust	IRET	Equity			746.5	2.10		0.13
11	CoreSite Realty Corp.	COR	Equity			565.5	1.59		0.10
12	Winthrop Realty Trust	FUR	Equity			354.0	1.00		0.06
13	CapLease Inc.	LSE	Equity			342.8	0.97		0.06
14	One Liberty Properties Inc.	OLP	Equity			275.8	0.78		0.05
15	Whitestone REIT	WSR	Equity			214.0	0.60		0.04
15 Sector Totals						35,516.8	100.00	4.52	6.14
4 S&P Sector Total						19,328.2			
Property Sector: Lodging/Resorts									
1	Host Hotels & Resorts Inc.	HST	Equity		S&P 500	11,542.4	41.15	2.70	1.99
2	Hospitality Properties Trust	HPT	Equity		S&P 400	2,934.0	10.46	0.69	0.51
3	LaSalle Hotel Properties	LHO	Equity		S&P 600	2,285.5	8.15	0.53	0.39
4	RLJ Lodging Trust	RLJ	Equity			2,010.6	7.17		0.35
5	DiamondRock Hospitality Co.	DRH	Equity		S&P 600	1,879.2	6.70	0.44	0.32
6	Sunstone Hotel Investors Inc.	SHO	Equity			1,492.1	5.32		0.26
7	Pebblebrook Hotel Trust	PEB	Equity			1,378.8	4.92		0.24
8	Strategic Hotels & Resorts Inc.	BEE	Equity			1,227.6	4.38		0.21
9	Hersha Hospitality Trust (CI A)	HT	Equity			971.9	3.47		0.17
10	Chesapeake Lodging Trust	CHSP	Equity			638.9	2.28		0.11
11	FelCor Lodging Trust Inc.	FCH	Equity			590.0	2.10		0.10
12	Ashford Hospitality Trust	AHT	Equity			570.8	2.04		0.10
13	Summit Hotel Properties Inc.	INN	Equity			269.0	0.96		0.05
14	Chatham Lodging Trust	CLDT	Equity			191.8	0.68		0.03
15	MHI Hospitality Corp.	MDH	Equity			39.1	0.14		0.01
16	Supertel Hospitality Inc.	SPPR	Equity			24.3	0.09		0.00
16 Sector Totals						28,046.1	100.00	4.36	4.85
4 S&P Sector Total						18,641.0			
Property Sector: Self Storage									
1	Public Storage	PSA	Equity		S&P 500	23,683.2	77.84	5.54	4.09
2	Extra Space Storage Inc.	EXR	Equity		S&P 600	3,463.0	11.38	0.81	0.60
3	Sovran Self Storage Inc.	SSS	Equity		S&P 600	1,703.6	5.60	0.40	0.29
4	CubeSmart	CUBE	Equity			1,577.4	5.18		0.27
4 Sector Totals						30,427.2	100.00	6.75	5.26
3 S&P Sector Total						28,849.8			

REITs in the FTSE NAREIT All REITs Index and S&P Equity Indexes

(Ranked by equity market capitalization)

September 28, 2012

Property Sector: Health Care								
1	HCP Inc.	HCP	Equity	S&P 500	19,105.2	29.93	4.47	3.30
2	Ventas Inc.	VTR	Equity	S&P 500	18,315.8	28.69	4.28	3.16
3	Health Care REIT Inc.	HCN	Equity	S&P 500	13,195.3	20.67	3.09	2.28
4	Senior Housing Properties Trust	SNH	Equity	S&P 400	3,843.6	6.02	0.90	0.66
5	Omega Healthcare Investors Inc.	OHI	Equity	S&P 400	2,470.2	3.87	0.58	0.43
6	Healthcare Realty Trust Inc.	HR	Equity	S&P 600	1,794.0	2.81	0.42	0.31
7	National Health Investors Inc.	NHI	Equity		1,428.1	2.24		0.25
8	Medical Properties Trust Inc.	MPW	Equity	S&P 600	1,404.1	2.20	0.33	0.24
9	LTC Properties Inc.	LTC	Equity	S&P 600	966.2	1.51	0.23	0.17
10	Sabra Healthcare REIT Inc.	SBRA	Equity	S&P 600	737.7	1.16	0.17	0.13
11	Universal Health Realty Income Trust	UHT	Equity	S&P 600	581.9	0.91	0.14	0.10
11	Sector Totals				63,842.0	100.00	14.60	11.03
10	S&P Sector Total				62,413.9			
Property Sector: Timber								
1	Weyerhaeuser Co.	WY	Equity	S&P 500	14,009.5	48.90	3.28	2.42
2	Plum Creek Timber Company Inc.	PCL	Equity	S&P 500	7,137.5	24.91	1.67	1.23
3	Rayonier Inc. REIT	RYN	Equity	S&P 400	6,001.3	20.95	1.40	1.04
4	Potlatch Corp.	PCH	Equity	S&P 400	1,500.1	5.24	0.35	0.26
4	Sector Totals				28,648.4	100.00	6.70	4.95
4	S&P Sector Total				28,648.4			
Property Sector: Infrastructure								
1	American Tower Corp	AMT	Equity	S&P 500	28,315.5	99.96	6.62	4.89
2	Power REIT	PW	Equity		11.7	0.04		0.00
2	Sector Totals				28,327.1	100.00	6.62	4.89
1	S&P Sector Total				28,315.5			
Investment Sector: Mortgage								
1	Annaly Capital Management Inc.	NLY	Mortgage	Home Financing	16,319.2	29.93		2.82
2	American Capital Agency Corp.	AGNC	Mortgage	Home Financing	11,815.9	21.67		2.04
3	Two Harbors Investment Corp.	TWO	Mortgage	Home Financing	3,282.4	6.02		0.57
4	MFA Financial Inc.	MFA	Mortgage	Home Financing	3,026.5	5.55		0.52
5	Chimera Investment Corp.	CIM	Mortgage	Home Financing	2,783.3	5.10		0.48
6	Hatteras Financial Corp.	HTS	Mortgage	Home Financing	2,756.4	5.06		0.48
7	CYS Investments Inc	CYS	Mortgage	Home Financing	2,347.4	4.31		0.41
8	Invesco Mortgage Capital Inc.	IVR	Mortgage	Home Financing	2,322.8	4.26		0.40
9	Armour Residential REIT Inc.	ARR	Mortgage	Home Financing	2,278.7	4.18		0.39
10	PennyMac Mortgage Investment Trust	PMT	Mortgage	Home Financing	1,376.6	2.52		0.24
11	Capstead Mortgage Corp.	CMO	Mortgage	Home Financing	1,330.9	2.44		0.23
12	Redwood Trust Inc.	RWT	Mortgage	Home Financing	1,135.8	2.08		0.20
13	Anworth Mortgage Asset Corp.	ANH	Mortgage	Home Financing	946.5	1.74		0.16
14	American Capital Mortgage Investment Corp.	MTGE	Mortgage	Home Financing	911.3	1.67		0.16
15	Dynex Capital Inc.	DX	Mortgage	Home Financing	584.2	1.07		0.10
16	AG Mortgage Investment Trust Inc.	MITT	Mortgage	Home Financing	547.9	1.00		0.09
17	Apollo Residential Mortgage Inc.	AMTG	Mortgage	Home Financing	533.0	0.98		0.09
18	Western Asset Mortgage Capital Corp	WMC	Mortgage	Home Financing	229.4	0.42		0.04
18	Subsector Totals				54,528.2	100.00	0.00	9.42
0	S&P Subsector Total				0.0			
1	Starwood Property Trust Inc.	STWD	Mortgage	Commercial Financing	2,708.1	30.57		0.47
2	Newcastle Investment Corp.	NCT	Mortgage	Commercial Financing	1,298.8	14.66		0.22
3	Northstar Realty Finance Corp.	NRF	Mortgage	Commercial Financing	848.2	9.57		0.15
4	Crexus Investment Corp.	CXS	Mortgage	Commercial Financing	828.3	9.35		0.14
5	Colony Financial Inc.	CLNY	Mortgage	Commercial Financing	763.0	8.61		0.13
6	iStar Financial Inc.	SFI	Mortgage	Commercial Financing	698.5	7.88		0.12
7	Resource Capital Corp.	RSO	Mortgage	Commercial Financing	518.5	5.85		0.09
8	Apollo Commercial Real Estate Finance Inc.	ARI	Mortgage	Commercial Financing	356.5	4.02		0.06
9	RAIT Financial Trust	RAS	Mortgage	Commercial Financing	261.8	2.96		0.05
10	Arbor Realty Trust Inc.	ABR	Mortgage	Commercial Financing	165.7	1.87		0.03
11	Ares Commercial Real Estate Corp.	ACRE	Mortgage	Commercial Financing	157.5	1.78		0.03
12	BRT Realty Trust	BRT	Mortgage	Commercial Financing	91.1	1.03		0.02
13	Capital Trust Inc. Cl A	CT	Mortgage	Commercial Financing	84.9	0.96		0.01
14	PMC Commercial Trust	PCC	Mortgage	Commercial Financing	79.1	0.89		0.01
14	Subsector Totals				8,860.1	100.00	0.00	1.53
0	S&P Subsector Total				0.0			
32	Sector Totals				63,388.3		0.00	10.95
0	S&P Sector Total				0.0			
16	S&P 500 Large Cap				271,987.9		63.61	46.99
27	S&P 400 Mid Cap				111,848.8		26.16	19.32
30	S&P 600 Small Cap				43,776.5		10.24	7.56
73	S&P Index Total				427,613.1		100.00	73.88
168	Industry Total				578,781.6			100.00

¹ Equity market capitalization does not include operating partnership units or preferred stock.

U.S. REIT Merger and Acquisition Activity
Enterprise Value in Millions of Dollars
(2004 - 2012)

Year	Acquiror	Target	Acquiror Type	Enterprise Value	Announced	Completed	Status
2004	Ventas, Inc.	ElderTrust	Public REIT	191	19-Nov-03	5-Feb-04	Closed
	Aslan Realty Partners, LLC	Great Lakes REIT	Private Real Estate Company	252	21-Jan-04	27-Apr-04	Closed
	ProLogis/Eaton Vance Corporation	Keystone Property Trust	Public REIT/Investment Advisor	729	3-May-04	4-Aug-04	Closed
	Simon Property Group	Chelsea Property Group	Public REIT	3,000	21-Jun-04	14-Oct-04	Closed
	General Growth Properties, Inc.	The Rouse Company	Public REIT	7,000	19-Aug-04	12-Nov-04	Closed
	PL Retail LLC (Kimco Realty & DRA Advisors)	Price Legacy Corporation	Public REIT/Investment Advisor	3,500	24-Aug-04	21-Dec-04	Closed
	Total Public to Public			14,420	98%		
Total Public to Private			252	2%			
Total			14,672				
2005	Camden Property Trust	Summit Property Group	Public REIT	1,100	24-Oct-04	28-Feb-05	Closed
	iStar Financial, Inc.	Falcon Financial Investment Trust	Public REIT	120	20-Jan-05	2-Mar-05	Closed
	Colonial Properties Trust	Cornerstone Realty Income Trust	Public REIT	566	25-Oct-04	1-Apr-05	Closed
	Centro Properties Limited	Kramont Realty Trust	Australian LPT	120			Closed
	The Lightstone Group	Prime Group Realty Trust	Private Real Estate Company	1,500	17-Feb-05	1-Jul-05	Closed
	ProLogis	Catellus Development Corporation	Public REIT	3,819	6-Jun-05	15-Sep-05	Closed
	DRA Advisors LLC	CRT Properties, Inc.	Investment Advisor	890	17-Jun-05		Closed
	ING Clarion	Gables Residential Trust	Private Equity Joint Venture	4,900	7-Jun-05	30-Sep-05	Closed
	DRA Advisors LLC	Capital Automotive REIT	Investment Advisor	1,800	2-Sep-05	16-Dec-05	Closed
	Total Public to Public			5,725	39%		
	Total Public to Private			9,090	61%		
	Total			14,815			
	2006	Brandywine Realty Trust	Prentiss Properties Trust	Public REIT	1,921	3-Oct-05	4-Jan-06
CDP Capital-Financing Inc.		Criimi Mae Inc.	Investment Advisor/Pension Fund	1,700		19-Jan-06	Closed
Morgan Stanley Property Fund		AMLI Residential Properties	Investment Advisor/Brokerage Firm	2,100	23-Oct-05	7-Feb-06	Closed
Duke Realty Corporation		The Mark Winkler Company	Public REIT	855	2-Mar-06	4-Mar-06	Closed
CalEast Industrial Investors		CenterPoint Properties Trust	Real Estate Operating Partnership	2,436	7-Dec-05	8-Mar-06	Closed
Morgan Stanley Real Estate and Onex Real Estate		Town and Country Trust	Private Real Estate Joint Venture	1,500	19-Dec-05	31-Mar-06	Closed
Kimco Realty Corporation		Atlantic Realty Trust	Public REIT	83	1-Dec-05	31-Mar-06	Closed
Host Marriott Corporation		Starwood Hotels and Resorts	Public REIT	4,040	14-Nov-05	7-Apr-06	Closed
GE Real Estate, Inc. & Trizec Properties		Arden Realty Trust	Public non-REIT and REIT	3,032	21-Dec-05	2-May-06	Closed
Blackstone Group LP		MeriStar Hospitality Corporation	Private Equity Firm	2,600	20-Feb-06	2-May-06	Closed
LBA Realty LLC		Bedford Property Investors	Private Real Estate Company	432	10-Feb-06	5-May-06	Closed
Spirit Finance Corporation		Sun Capital Partners, Inc. (ShopKo Stores)	Public REIT	815	10-May-06	2-Jun-06	Closed
Mack-Cali Realty Corporation		Gale Real Estate Services Corp.	Public REIT	545	16-Feb-06	5-Jun-06	Closed
Blackstone Group LP		CarrAmerica Realty Corp.	Private Equity Firm	5,600	6-Mar-06	13-Jul-06	Closed
Archstone-Smith		Deutsche WohnAnlage GmbH	Public REIT	649	29-Jun-06	31-Jul-06	Closed
Public Storage Inc.		Shurgard Storage Centers Inc.	Public REIT	3,200	7-Mar-06	23-Aug-06	Closed
Westmont Hospitality and Cadim Inc. (Braveheart Holdin		Boykin Lodging Company	JV- Public Pension Fund	417	22-May-06	21-Sep-06	Closed
Accredited Home Lenders Holding Co.		Aames Investment Corporation	Mortgage Banking Firm	340	14-Sep-06	1-Oct-06	Closed
Brookfield Properties Corporation		Trizec Canada, Inc.	Real Estate Operating Company	2,670	5-Jun-06	5-Oct-06	Closed
Blackstone Group LP and Brookfield Properties Co.		Trizec Properties, Inc.	JV- Private Equity Firm & REOC	6,500	5-Jun-06	5-Oct-06	Closed
Health Care Property Investors		CNL Retirement Properties	Public REIT	5,300	2-May-06	6-Oct-06	Closed
Centro Watt		Heritage Property Investment Trust Inc.	JV - Australian LPT & Private Equity Firm	3,200	9-Jul-06	19-Oct-06	Closed
Kimco Realty Corporation		Pan Pacific Retail Properties	Public REIT	4,000	10-Jul-06	31-Oct-06	Closed
Morguard Corporation		Sizeler Property Investors, Inc.	Canadian REIT	324	7-Aug-06	10-Nov-06	Closed
Morgan Stanley		Glenborough Realty Trust, Inc.	Brokerage Firm	1,900	21-Aug-06	29-Nov-06	Closed
Health Care REIT		Windrose Medical Properties Trust	Public REIT	877	13-Sep-06	20-Dec-06	Closed
KollPER LLC		AmeriVest Properties	Real Estate Operating Partnership	273	18-Jul-06	29-Dec-06	Closed
Lexington Corporate Properties		Newkirk Realty Trust, Inc.	Public REIT	1,080	25-Jul-06	3-Jan-07	Closed
SL Green Realty Corp.		Reckson Associates Realty Corp.	Public REIT	6,000	3-Aug-06	25-Jan-07	Closed
Morgan Stanley		Saxon Capital	Brokerage Firm	706	8-Aug-06	4-Dec-06	Closed
Babcock & Brown Real Estate Investments		BNP Residential Properties Inc.	Investment Advisor/Brokerage Firm	766	31-Aug-06	28-Feb-07	Closed
Hospitality Properties Trust		TravelCenters of America Inc.	Public REIT	1,900	1-Sep-06	31-Jan-07	Closed
Geo Group		CentraCore Properties Trust	Correctional Facility Operator	428	19-Sep-06	24-Jan-07	Closed
Crown Castle International Corporation		Global Signal Inc.	Public Tower Company	4,000	16-Oct-06	12-Jan-07	Closed
Developers Diversified Realty Corp.		Inland Retail Real Estate Trust, Inc.	Public REIT	6,200	23-Oct-06	27-Feb-07	Closed
Record Realty Trust		Government Properties Trust, Inc.	Australian LPT	223	24-Oct-06	13-Apr-07	Closed
GE Capital Solutions		Truststreet Properties, Inc.	Financial Lending Company	3,000	30-Oct-06	27-Feb-07	Closed
JP Morgan-Special Situation Property Fund		Columbia Equity Trust	Pension Trust Fund	502	6-Nov-06	1-Mar-07	Closed
National HealthCare Corporation		National Health Realty	Health Care Provider (Public Company)	268	21-Dec-06	31-Oct-07	Closed
Total Public to Public				47,182	57%		
Total Public to Private				35,200	43%		
Total				82,381			

U.S. REIT Merger and Acquisition Activity
Enterprise Value in Millions of Dollars
(2004 - 2012)

Year	Acquiror	Target	Acquiror Type	Enterprise Value	Announced	Completed	Status	
2007	Ventas, Inc.	Sunrise Senior Living REIT	Public REIT	1,036	14-Jan-07	26-Apr-07	Closed	
	Simon Property Group; Farallon Capital Management	Mills Corporation	Public REIT; Investment Advisor	1,350	17-Jan-07	3-Apr-07	Closed	
	Morgan Stanley	CNL Hotels & Resorts Inc.	Brokerage Firm	6,702	19-Jan-07	12-Apr-07	Closed	
	Brookfield Asset Management Inc.	Longview Fibre	Asset Management Firm	2,150	5-Feb-07	20-Apr-07	Closed	
	Blackstone Group	Equity Office Properties Trust	Private Equity Firm	39,000	7-Feb-07	9-Feb-07	Closed	
	Credit-Based Asset Servicing and Securitization LLC (C	Fieldstone Investment Corporation	Mortgage Banking Firm	259	16-Feb-07	17-Jul-07	Closed	
	Centro Properties Group	New Plan Excel Realty Trust, Inc.	Australian LPT	6,200	27-Feb-07	20-Apr-07	Closed	
	Macquarie Bank Limited, Kaupthing Bank hf, et al.	Spirit Finance Corporation	Investment Advisor/Brokerage Firm	3,500	13-Mar-07	1-Aug-07	Closed	
	Inland American Real Estate Trust Inc.	Winston Hotels, Inc.	Asset Management Firm	460	3-Apr-07	2-Jul-07	Closed	
	Apollo Investment Corporation	Innkeepers USA Trust	Closed-End Investment Company	1,500	16-Apr-07	29-Jun-07	Closed	
	JER Partners	Highland Hospitality	Private Equity Firm	2,000	24-Apr-07	28-Jul-07	Closed	
	AP AIMCAP Holdings LLC	Eagle Hospitality Properties Trust, Inc.	Closed-End Investment Company	319	27-Apr-07	15-Aug-07	Closed	
	Morgan Stanley	Crescent Real Estate Equity	Brokerage Firm	6,500	23-May-07	3-Aug-07	Closed	
	Tishman Speyer/ Lehman Brothers	Archstone-Smith	Real Estate Company/ Brokerage Firm	22,200	29-May-07	5-Oct-07	Closed	
	Whitehall Street Global Real Estate, LP	Equity Inns, Inc.	Investment Advisor/Brokerage Firm	2,200	21-Jun-07	25-Oct-07	Closed	
	Sentinel Omaha LLC	America First Apartment Investors	Real Estate Advisory Firm	532	25-Jun-07	18-Sep-07	Closed	
	Liberty Property Trust	Republic Property Trust	Public REIT	850	24-Jul-07	4-Oct-07	Closed	
	Gramercy Capital Corp/New York	American Financial Realty Trust	Public REIT	1,094	5-Nov-07	1-Apr-08	Closed	
	Total Public to Public				10,530	11%		
	Total Public to Private				87,321	89%		
Total				97,851				
2008	American Campus Communities	GMH Communities Trust	Public REIT	1,400	12-Feb-08	11-Jun-08	Closed	
	Hypo Real Estate Bank AG	Quadra Realty Trust	Brokerage Firm	179	29-Jan-08	14-Mar-08	Closed	
	Boston Properties	Macklowe Properties (New York Office Portf	Public REIT	3,950	24-May-08	10-Jun-08	Closed	
	American Land Lease	Green Courte Real Estate Partners	Private Equity Firm	113	10-Dec-08	16-Mar-09	Closed	
	Total Public to Public				5,350	95%		
Total Public to Private				292	5%			
Total				5,642				
2009	<i>No Deals</i>							
2010	Brookfield Asset Management Inc.	Crystal River Capital, Inc.	Asset Management Firm	14	24-Feb-10	30-Jul-10	Closed	
	Tiptree Financial Partners, LP	Care Investment Trust, Inc.	Real Estate Advisory Firm	97	16-Mar-10	13-Aug-10	Closed	
	HCP, Inc.	HCR ManorCare, Inc.	Public REIT	6,080	14-Dec-10	8-Apr-11	Closed	
	Total Public to Public				6,080	98%		
Total Public to Private				111	2%			
Total				6,191				
2011	AMB Property Corp.	ProLogis	Public REIT	16,517	31-Jan-11	3-Jun-11	Closed	
	Ventas, Inc.	Nationwide Health Properties, Inc.	Public REIT	7,010	28-Feb-11	1-Jul-11	Closed	
	Ventas, Inc.	Cogdell Spencer, Inc.	Public REIT	635	27-Dec-11	2-Apr-12	Closed	
	Total Public to Public				24,162	100%		
Total Public to Private					0%			
Total				24,162				
Industry Totals: 2004-2012								
Total Public to Public				113,449	46%			
Total Public to Private				132,266	54%			
Total				245,715				

Industrial/Office

Name	Ticker	Share Price (\$)			FFO per Share		Price/FFO		FFO	FFO	Debt/	Total Return (%)					Dividend	Equity	Implied	Debt	Average	Average	Relative	Long-Term		
		28-Sep-2012	52 Week		2012	2013	2012	2013	2012-2013	Payout (%)	EBITDA	Sep-12	QTD	YTD	1-Yr	3-Yr	5-Yr	Yield (%)	Cap (\$M)	Market Cap (\$M)	Ratio (%)	Share Volume	Dollar Volume	Liquidity	Issuer Rating	
Office																										
Alexandria Real Estate Equities Inc.	ARE	73.52	76.65	57.19	4.36	4.77	16.85	15.41	9.34	50.52	7.71	0.21	1.83	8.89	23.21	13.42	-2.18	2.88	4,615.3	4,615.3	40.0	362	27,005	0.585	BBB-	
BioMed Realty Trust Inc.	BMR	18.72	20.19	15.80	1.23	1.35	15.23	13.84	10.04	66.67	5.91	2.19	1.37	7.20	18.26	15.39	0.52	4.59	2,879.6	2,935.0	41.7	1,065	20,338	0.706	BBB-	
Boston Properties Inc.	BXP	110.61	116.07	84.72	4.88	5.28	22.65	20.96	8.04	49.11	7.74	-0.86	2.58	12.79	26.78	21.85	5.61	1.99	16,571.1	16,586.3	32.8	819	92,619	0.559	A-	
Brandywine Realty Trust	BDN	12.19	12.88	7.09	1.34	1.40	9.10	8.72	4.29	46.88	7.89	-0.08	0.01	33.70	61.88	9.06	-6.90	4.92	1,739.9	1,772.3	57.7	1,152	14,362	0.825	BBB-	
CommonWealth REIT	CW/H	14.56	21.00	14.25	3.37	3.30	4.32	4.41	-2.01	57.47	6.72	-2.74	-21.77	-5.15	-14.53	-14.55	-9.36	13.74	1,217.9	1,217.9	70.5	787	11,760	0.966	BBB-	
Corporate Office Properties Trust	OFC	23.97	25.57	19.37	2.04	2.03	11.72	11.82	-0.84	76.39	9.51	8.43	3.13	16.86	16.29	-3.91	-5.98	4.59	1,718.7	1,821.0	55.1	699	16,372	0.984	BBB-	
Douglas Emmett Inc.	DEI	23.07	24.48	15.92	1.37	1.41	16.85	16.34	3.09	37.14	10.03	-3.21	0.52	29.03	38.62	26.69	1.79	2.60	3,220.5	3,990.6	44.9	1,069	25,372	0.768	BBB-	
Franklin Street Properties Corp.	FSP	11.07	13.05	9.58	0.93	0.94	11.90	11.78	1.08	79.17	5.18	-0.45	6.55	17.61	5.07	0.61	-2.39	6.87	918.1	918.1	36.0	292	3,392	0.369	BBB-	
Government Properties Income Trust	GOV	23.40	24.66	20.20	2.15	2.15	10.91	10.86	0.40	79.25	3.79	3.59	5.35	9.47	16.88	6.04	-	7.18	1,100.1	1,100.1	30.7	592	13,827	1.257	BBB-	
Healthcare Trust of America Inc	HTA	9.78	9.98	9.14	-	-	-	-	-	0.00	4.96	5.57	0.03	0.52	-	-	-	1.96	415.8	417.6	27.3	292	2,851	0.686	BBB-	
Highwoods Properties Inc.	HIW	32.62	35.48	26.51	2.71	2.71	12.05	12.03	0.15	60.71	6.24	0.03	-1.81	14.29	21.75	6.87	3.41	5.21	2,481.4	2,603.0	41.5	850	28,139	1.134	BBB-	
Hudson Pacific Properties Inc.	HPP	18.50	19.28	10.85	0.84	0.93	21.99	19.86	10.70	0.00	5.44	4.97	6.96	33.59	64.21	-	-	2.70	873.5	919.0	29.6	238	4,400	0.504	BBB-	
Kilroy Realty Corp.	KRC	44.78	49.88	29.25	2.24	2.50	20.03	17.88	12.02	71.43	7.43	-4.41	-6.78	20.34	47.73	21.94	-1.19	3.13	3,310.7	3,387.6	34.4	595	28,020	0.846	BBB-	
Mack-Cali Realty Corp.	CLJ	26.60	29.53	24.37	2.61	2.57	10.20	10.35	-1.38	60.81	4.64	-0.37	-7.08	4.57	6.22	-0.63	-1.96	6.77	2,335.5	2,659.7	39.9	700	19,055	0.816	BBB	
Mission West Properties	MSW	8.70	10.31	7.00	0.51	0.55	17.06	15.72	8.50	100.00	4.46	-2.10	2.44	1.64	22.55	17.44	1.36	5.98	195.8	914.6	26.7	54	479	0.245	BBB-	
MPG Office Trust Inc.	MPG	3.35	3.80	1.68	0.27	-0.12	12.26	-28.71	-142.68	0.00	11.58	-4.29	66.67	68.34	58.77	16.87	-33.34	0.00	191.2	212.8	96.0	376	1,320	0.690	BBB-	
Parkway Properties Inc.	PKY	13.37	13.49	9.16	1.27	1.20	10.51	11.13	-5.59	17.44	8.32	16.27	18.00	38.90	25.35	-9.73	-17.22	3.37	551.0	575.1	70.9	205	2,552	0.463	BBB-	
Piedmont Office Realty Trust Inc.	PDM	17.34	18.91	15.42	1.41	1.42	12.33	12.25	0.59	57.14	4.68	2.18	1.94	5.41	13.25	10.01	-5.80	4.61	2,928.7	2,928.7	32.0	1,130	19,829	0.677	BBB	
SL Green Realty Corp.	SLG	80.07	85.14	55.14	5.26	4.93	15.22	16.24	-6.25	22.73	8.04	-0.34	0.10	21.31	39.56	23.34	-5.09	1.25	7,177.0	7,421.3	46.0	650	53,182	0.741	BB+	
AVERAGE		29.80	32.12	22.77	2.15	2.19	13.95	11.16	-5.03	49.10	6.86	1.29	4.21	18.82	27.33	9.16	-4.92	4.44	2,865.4	3,105.0	44.9	628	20,285	0.729		
Industrial																										
DCT Industrial Trust Inc.	DCT	6.47	6.86	4.02	0.41	0.43	15.80	15.20	3.96	63.64	7.43	2.22	3.68	29.10	55.13	14.18	-3.42	4.33	1,725.1	1,896.0	43.4	4,535	29,774	1.726	BBB-	
EastGroup Properties Inc.	EGP	53.20	55.55	36.01	3.09	3.20	17.22	16.63	3.57	67.53	6.81	0.20	0.77	26.14	45.64	17.34	8.73	3.98	1,552.3	1,552.3	34.5	189	10,265	0.661	BBB-	
First Industrial Realty Trust Inc.	FR	13.14	13.60	7.54	0.95	1.07	13.87	12.28	12.97	0.00	7.08	1.86	4.12	28.45	64.25	35.84	-17.41	0.00	1,291.8	1,360.5	55.6	796	10,538	0.816	BB-	
Monmouth Real Estate Investment Corp. (CI A)	MNR	11.19	11.90	7.65	0.71	0.66	15.83	16.87	-6.13	57.69	4.11	0.18	-3.21	27.72	50.06	25.91	14.34	5.36	452.5	452.5	34.8	103	1,174	0.259	BBB-	
Prologis Inc.	PLD	35.03	36.91	22.63	1.67	1.75	20.93	20.00	4.63	50.00	5.61	3.31	6.24	25.60	49.61	20.15	-6.31	3.20	16,078.8	16,195.1	44.7	3,127	110,893	0.690	BBB-	
STAG Industrial Inc.	STAG	16.26	16.46	10.04	1.14	1.30	14.29	12.46	14.70	-	6.79	7.45	13.42	49.70	72.15	-	-	6.64	557.3	681.6	39.4	374	6,014	1.079	BBB-	
Terrano Realty Corp.	TRNO	15.80	16.10	11.42	0.64	0.79	24.88	19.94	24.80	83.33	8.14	4.91	5.37	6.60	26.81	-	-	3.04	210.3	210.3	39.2	38	602	0.286	BBB-	
AVERAGE		21.58	22.48	14.19	1.23	1.32	17.55	16.20	8.36	53.70	6.57	2.88	4.34	27.62	51.95	22.68	-0.81	3.79	3,124.0	3,192.6	41.7	1,309	24,180	0.788		
Mixed																										
Duke Realty Corp.	DRE	14.70	15.77	9.70	1.01	1.11	14.61	13.25	10.27	80.95	7.40	1.38	1.62	26.47	47.30	12.93	-9.27	4.63	3,964.5	4,033.2	50.4	3,159	47,793	1.206	BBB-	
First Potomac Realty Trust	FPO	12.88	15.06	11.10	0.95	1.14	13.50	11.35	18.97	74.07	9.48	0.55	11.38	3.47	9.83	9.70	-3.23	6.21	656.5	694.1	59.4	268	3,470	0.529	BBB-	
Gladstone Commercial Corp.	GOOD	18.26	19.03	14.40	1.51	1.67	12.07	10.91	10.57	98.68	7.63	2.75	11.93	10.96	26.98	20.50	10.01	8.21	200.0	200.0	65.9	53	984	0.492	BBB-	
Liberty Property Trust	LRY	36.24	38.57	27.49	2.59	2.69	13.99	13.47	3.85	69.85	5.43	-0.45	-0.34	22.13	31.56	9.90	4.80	5.24	4,252.3	4,390.3	35.7	663	24,867	0.585	BBB	
PS Business Parks Inc.	PSB	66.82	71.05	46.70	4.38	4.87	15.27	13.72	11.31	43.56	3.11	-1.36	-0.71	22.98	38.73	12.68	6.82	2.63	1,612.2	2,100.4	19.7	94	6,491	0.403	BBB+	
AVERAGE		29.78	31.90	21.88	2.09	2.30	13.89	12.54	11.00	73.43	6.61	0.57	4.78	17.20	30.88	13.14	1.83	5.38	2,137.1	2,283.6	46.2	848	16,721	0.643		

Retail

Name	Ticker	Share Price (\$)			FFO per Share		Price/FFO		FFO	FFO	Debt/	Total Return (%)					Dividend	Equity	Implied	Debt	Average	Average	Relative	Long-Term	
		52 Week			Estimates (\$)		Estimates		Growth (%)	Payout (%)	EBITDA						Yield (%)	Market	Market	Ratio (%)	Share	Dollar	Liquidity	Issuer Rating	
		28-Sep-2012	High	Low	2012	2013	2012	2013	2012-2013	2012: Q2	2012: Q2	Sep-12	QTD	YTD	1-Yr	3-Yr	5-Yr		Cap (\$M)	Cap (\$M)		Volume	Volume		
Shopping Centers																									
Acadia Realty Trust	AKR	24.82	25.92	17.85	1.05	1.22	23.72	20.33	16.70	85.71	9.63	0.39	7.84	26.11	37.05	22.57	3.38	2.90	1,144.1	1,159.5	45.3	315	7,970	0.697	
Alexander's Inc.	ALX	427.49	458.07	333.00	22.59	23.56	18.92	18.14	4.29	68.31	8.04	-4.93	-0.01	18.75	22.57	16.09	4.17	3.51	2,171.9	2,171.9	37.7	3	1,502	0.069	
AmREIT, Inc.	AMRE	14.62	15.58	14.00	1.06	1.02	13.98	14.60	-4.25	64.52	8.19	3.55	7.09	7.09	-	-	-	4.05	58.7	58.7	-	48	717	1.222	
Cedar Realty Trust Inc	CDR	5.28	5.77	2.75	0.42	0.46	12.57	11.60	8.33	71.43	12.12	-3.83	5.57	26.18	79.08	-1.18	-12.47	3.79	379.1	382.0	70.8	405	2,243	0.592	
DDR Corp	DDR	15.36	15.86	10.17	1.02	1.11	15.10	13.88	8.75	38.10	9.73	1.70	5.73	29.34	45.45	20.57	-18.46	3.13	4,671.5	4,677.2	49.7	3,706	57,556	1.232	BB+
Equity One Inc.	EQY	21.06	21.96	14.89	1.10	1.16	19.18	18.14	5.73	81.48	6.93	0.36	0.36	28.16	39.11	15.99	0.57	4.18	2,432.8	2,494.7	36.8	505	10,765	0.432	BBB-
Excel Trust Inc.	EXL	11.42	13.12	8.96	0.76	0.89	15.04	12.86	16.95	84.21	5.15	-1.37	-3.18	-0.86	25.33	-	-	5.69	388.9	403.5	40.7	125	1,464	0.377	
Federal Realty Investment Trust	FRT	105.30	109.49	80.15	4.30	4.55	24.51	23.14	5.92	66.35	4.82	-1.75	1.86	18.47	31.44	23.69	7.24	2.77	6,686.6	6,720.9	24.1	342	36,589	0.547	BBB+
Inland Real Estate Corp.	IRC	8.25	9.05	6.66	0.88	0.92	9.43	9.02	4.57	71.25	8.22	1.18	0.17	14.03	21.15	4.85	-5.24	6.91	732.1	732.1	51.1	290	2,473	0.738	
Kimco Realty Corp.	KIM	20.27	21.03	14.11	1.26	1.34	16.10	15.14	6.33	61.29	5.62	-0.25	7.58	27.31	40.94	20.68	-10.22	3.75	8,226.2	8,259.4	35.1	3,017	62,089	0.755	BBB+
Kite Realty Group Trust	KRG	5.10	5.54	3.30	0.42	0.46	12.03	10.99	9.51	66.67	11.31	-0.78	3.42	17.24	46.78	12.72	-17.40	4.71	324.4	364.4	64.7	217	1,134	0.350	
Ramco-Gershenson Properties Trust	RPT	12.53	13.57	7.60	1.01	1.06	12.46	11.87	4.97	62.79	8.48	-2.14	0.90	32.53	61.63	18.75	-10.10	5.21	586.1	618.9	45.9	239	3,124	0.533	
Regency Centers Corp.	REG	48.73	50.52	33.37	2.45	2.52	19.88	19.30	3.00	84.09	6.04	-0.55	3.43	33.50	43.93	14.76	-3.83	3.80	4,380.8	4,389.4	32.5	645	31,831	0.727	BBB
Retail Opportunity Investment Corp.	ROIC	12.87	12.96	10.53	0.73	0.85	17.68	15.07	17.31	70.59	4.50	2.39	7.94	12.25	21.23	10.71	-	4.35	659.1	659.1	27.9	344	4,369	0.663	
Retail Properties of America Inc.	RPAI	11.32	11.74	8.64	0.89	0.90	12.74	12.55	1.54	-	8.98	2.36	18.16	33.51	-	-	-	2.93	963.2	963.2	79.1	649	7,447	0.773	
Roberts Realty Investors Inc.	RPI	1.39	1.77	1.27	-	-	-	-	-	-	-	-0.73	-1.45	6.25	-16.31	-2.12	-23.74	0.00	14.5	17.5	47.5	3	4	0.027	
Saul Centers Inc.	BFS	44.40	45.83	32.26	2.36	2.59	18.81	17.18	9.53	62.07	6.49	2.99	4.44	28.90	36.44	15.60	1.05	3.24	879.1	1,186.1	42.4	67	2,991	0.340	
Tanger Factory Outlet Centers Inc.	SKT	32.33	33.95	24.73	1.63	1.77	19.89	18.21	9.19	55.56	5.53	-3.64	1.53	12.48	27.73	23.99	13.74	2.60	3,035.3	3,234.5	25.0	630	20,876	0.688	BBB
Urstadt Biddle Properties Inc. CI A	UBA	20.23	20.78	15.42	1.18	1.23	17.22	16.51	4.26	85.34	3.07	3.74	3.60	16.32	33.68	17.34	11.82	4.89	421.1	421.1	29.6	84	1,685	0.400	
Weingarten Realty Investors	WRI	28.11	28.85	19.35	1.81	1.86	15.57	15.14	2.84	63.04	7.61	1.69	7.82	33.23	39.14	17.62	-1.30	4.13	3,396.7	3,441.2	40.5	961	27,189	0.800	BBB
AVERAGE		43.55	46.07	32.95	2.47	2.60	16.57	15.46	7.13	69.04	7.39	0.02	3.98	21.12	35.35	14.86	-3.80	3.83	2,080.6	2,117.8	43.5	630	14,201	0.578	
Regional Malls																									
CBL & Associates Properties Inc.	CBL	21.34	22.46	10.91	2.11	2.17	10.12	9.84	2.81	42.86	7.05	0.88	10.33	40.56	96.88	36.76	-0.68	4.12	3,383.7	4,271.1	55.8	1,486	32,666	0.965	
General Growth Properties Inc.	GGP	19.48	20.99	11.33	0.87	1.08	22.41	18.04	24.23	125.00	17.42	-5.35	8.28	35.05	70.11	78.15	-11.61	2.05	18,277.8	18,406.3	49.1	5,927	118,493	0.648	BB
Glimcher Realty Trust	GRT	10.57	11.25	6.51	0.60	0.73	17.52	14.57	20.27	83.33	9.88	1.83	4.42	18.33	55.47	50.91	-5.03	3.78	1,473.5	1,502.3	50.3	773	8,377	0.569	B+
Macerich Co.	MAC	57.23	62.29	40.21	3.49	3.30	16.40	17.36	-5.53	74.32	6.42	-3.93	-2.16	16.36	39.60	29.64	-1.44	3.84	7,549.6	8,195.5	32.5	901	53,722	0.712	
Pennsylvania Real Estate Investment Trust	PEI	15.86	17.25	7.12	1.77	1.88	8.95	8.45	5.98	34.88	9.82	0.89	6.95	57.12	115.96	34.68	-8.07	4.04	887.4	924.0	70.1	372	6,071	0.684	
Rouse Properties Inc.	RSE	14.35	14.81	10.70	-	-	-	-	-	-	-	-	3.24	6.45	13.22	-	-	0.49	701.4	701.4	64.2	181	2,591	0.369	
Simon Property Group Inc.	SPG	151.81	163.53	106.50	7.74	8.28	19.61	18.33	6.96	52.20	3.89	-4.34	-1.82	20.12	42.08	33.72	13.32	2.77	46,618.5	55,894.8	28.4	1,568	246,964	0.530	A-
Taubman Centers Inc.	TCO	76.73	81.34	48.27	3.25	3.57	23.62	21.50	9.84	61.67	7.16	-3.56	0.01	25.87	56.51	33.21	11.46	2.41	4,734.1	6,765.8	30.1	453	36,002	0.760	
AVERAGE		45.92	49.24	30.19	2.83	3.00	16.95	15.44	9.22	67.75	8.81	-1.29	4.06	28.33	68.09	42.44	-0.29	2.94	10,453.3	12,082.7	47.6	1,458	63,111	0.655	
Free Standing																									
Agree Realty Corp.	ADC	25.49	25.86	20.67	1.98	2.04	12.87	12.48	3.16	80.00	3.85	4.30	16.98	10.06	25.23	11.65	4.23	6.28	291.5	300.4	28.9	61	1,556	0.534	
American Realty Capital Trust Inc	ARCT	11.73	12.37	10.23	0.62	0.83	18.82	14.13	33.16	100.04	21.26	-0.01	9.19	15.73	-	-	-	3.13	1,858.9	1,858.9	34.5	6,689	80,157	4.312	BB
Getty Realty Corp.	GT	17.95	19.68	12.77	1.23	1.55	14.63	11.61	26.09	0.00	3.77	0.93	-5.61	30.47	28.69	-4.22	-0.76	1.39	599.4	599.4	21.4	105	1,936	0.323	
National Retail Properties Inc.	NNN	30.50	31.73	24.74	1.70	1.82	17.95	16.80	6.87	98.72	4.91	-1.80	9.27	20.51	19.99	19.54	11.79	5.18	3,299.8	3,299.8	31.2	878	27,237	0.825	BBB
Realty Income Corp.	O	40.89	42.96	30.54	2.00	2.30	20.42	17.80	14.74	94.89	4.74	-2.58	-1.04	20.96	32.86	23.06	14.55	4.44	5,446.6	5,446.6	26.3	1,428	59,634	1.095	BBB
Spirit Realty Capital Inc.	SRC	15.50	15.82	15.00	-	-	-	-	-	-	-	-	3.33	3.33	3.33	-	-	0.00	1,172.8	-	-	3,611	55,313	4.717	
AVERAGE		23.68	24.74	18.99	1.51	1.71	16.94	14.56	16.80	74.73	7.71	0.17	5.76	20.50	26.69	12.51	7.45	3.40	2,111.5	2,301.0	28.5	2,129	37,639	1.968	

Residential

Name	Ticker	Share Price (\$)			FFO per Share		Price/FFO		FFO Growth (%)	FFO Payout (%)	Debt/ EBITDA	Total Return (%)					Dividend Yield (%)	Equity Market Cap (\$M)	Implied Market Cap (\$M)	Debt Ratio (%)	Average Share Volume	Average Dollar Volume	Relative Liquidity	Long-Term Issuer Rating	
		28-Sep-2012	52 Week		2012	2013	2012	2013				2012 - 2013	2012: Q2	2012: Q2	Sep-12	QTD									YTD
Apartments																									
American Campus Communities Inc.	ACC	43.88	47.69	36.15	2.01	2.32	21.88	18.90	15.80	57.20	6.21	-5.88	-1.73	6.95	21.69	22.72	13.50	3.08	4,036.2	4,075.7	32.4	713	32,260	0.799	BBB-
Apartment Investment & Management Co.	AIV	25.99	28.27	20.29	1.75	2.03	14.88	12.82	16.08	45.00	9.19	-1.85	-3.11	15.92	20.70	23.61	0.42	3.08	3,782.7	3,993.4	57.1	1,454	38,776	1.025	BB+
Associated Estates Realty Corp.	AEC	15.16	17.34	14.46	1.22	1.34	12.43	11.35	9.51	68.00	8.77	-0.33	2.66	-1.65	2.57	22.25	9.69	4.75	750.4	751.5	48.7	359	5,455	0.727	BB+
AvalonBay Communities Inc.	AVB	135.99	151.00	110.78	5.47	6.14	24.87	22.15	12.28	69.73	5.78	-3.22	-3.19	6.36	22.63	27.27	7.67	2.85	13,178.8	13,179.8	20.0	646	90,488	0.687	BBB+
BRE Properties Inc.	BRE	46.89	53.26	40.66	2.36	2.55	19.86	18.35	8.20	67.54	6.76	-5.34	-5.53	-4.92	14.27	18.51	1.20	3.28	3,596.4	3,596.4	30.5	627	30,576	0.850	BBB
Camden Property Trust	CPT	64.49	71.59	53.09	3.56	3.88	18.12	16.63	8.98	59.04	4.40	-6.31	-3.87	6.33	20.77	21.37	5.30	3.47	5,390.4	5,538.2	30.0	831	55,986	1.039	BBB
Campus Crest Communities Inc.	CCG	10.80	11.95	9.12	0.72	0.84	14.94	12.88	16.04	106.67	8.33	1.44	5.45	12.06	5.27	-	-	5.93	416.4	421.1	46.3	388	4,290	1.030	BBB
Colonial Properties Trust	CLP	21.05	23.20	16.82	1.25	1.37	16.91	15.31	10.41	60.00	8.46	-3.97	-4.15	3.43	19.71	34.23	-3.61	3.42	1,835.7	1,986.6	46.9	609	13,176	0.718	BB+
Education Realty Trust Inc.	EDR	10.90	11.79	8.24	0.46	0.57	23.70	19.27	22.99	58.33	5.72	-5.71	-0.77	8.85	30.58	26.24	1.05	3.67	1,231.9	1,243.5	24.3	1,335	15,031	1.220	BBB
Equity Residential	EQR	57.53	65.47	49.66	2.87	3.03	20.02	19.00	5.35	56.25	7.62	-4.21	-7.22	2.59	13.95	26.99	10.79	2.35	17,294.9	18,073.4	32.4	1,821	107,543	0.622	BBB+
Essex Property Trust Inc.	ESS	148.24	160.33	114.60	6.75	7.46	21.95	19.86	10.54	63.80	6.88	-1.74	-2.98	7.86	27.19	27.54	9.09	2.97	5,398.1	5,730.1	30.1	235	35,777	0.663	BBB
Home Properties Inc.	HME	61.27	66.22	52.62	4.03	4.30	15.22	14.24	6.83	67.35	7.37	-4.04	0.90	9.88	12.69	17.73	9.03	4.31	3,057.1	3,710.9	44.9	502	31,726	1.038	BBB
Mid-America Apartment Communities Inc.	MAA	65.31	70.20	55.35	4.50	4.83	14.51	13.52	7.28	58.93	6.47	-3.96	-3.36	7.65	13.01	18.18	10.94	4.04	2,684.5	2,810.9	35.3	205	13,746	0.512	BBB
Post Properties Inc.	PPS	47.96	52.33	32.80	2.57	2.63	18.63	18.25	2.13	34.38	4.46	-5.56	-1.51	11.39	40.89	42.32	8.41	2.09	2,599.2	2,606.5	27.2	441	22,070	0.849	BBB-
Preferred Apartment Communities Inc.	APTS	8.50	8.63	5.70	-	-	-	-	-	-	13.39	5.87	22.54	47.80	60.18	-	-	6.59	44.0	-	-	10	87	0.199	BBB
UDR Inc.	UDR	24.82	27.06	20.77	1.36	1.45	18.19	17.08	6.50	61.43	9.16	-1.70	-3.14	1.43	16.02	20.70	7.18	3.55	6,210.1	6,400.5	32.2	2,631	67,317	1.084	BBB
AVERAGE		49.30	54.15	40.07	2.73	2.98	18.41	16.64	10.60	62.24	7.43	-2.91	-0.56	8.87	21.38	24.97	6.48	3.71	4,469.2	4,941.2	35.9	800	35,269	0.816	
Manufactured Homes																									
Equity Lifestyle Properties Inc.	ELS	68.12	72.99	58.96	4.58	4.89	14.86	13.93	6.67	29.07	6.11	-0.30	-0.60	4.14	11.39	19.63	8.04	2.57	2,814.0	3,083.6	42.3	327	22,577	0.802	BBB
Sun Communities Inc.	SUI	44.12	47.29	33.50	3.26	3.53	13.52	12.50	8.20	70.79	7.65	-3.69	1.13	24.34	33.61	37.92	20.66	5.71	1,167.1	1,258.5	51.0	312	13,953	1.196	BBB
UMH Properties Inc.	UMH	11.97	12.08	8.73	-	-	-	-	-	105.88	5.87	6.40	13.36	35.02	40.87	22.24	5.13	6.02	195.3	195.3	37.9	32	374	0.192	BBB
AVERAGE		41.40	44.12	33.73	3.92	4.21	14.19	13.22	7.44	68.58	6.55	0.80	4.63	21.17	28.62	26.60	11.28	4.77	1,392.1	1,512.4	43.7	224	12,301	0.730	

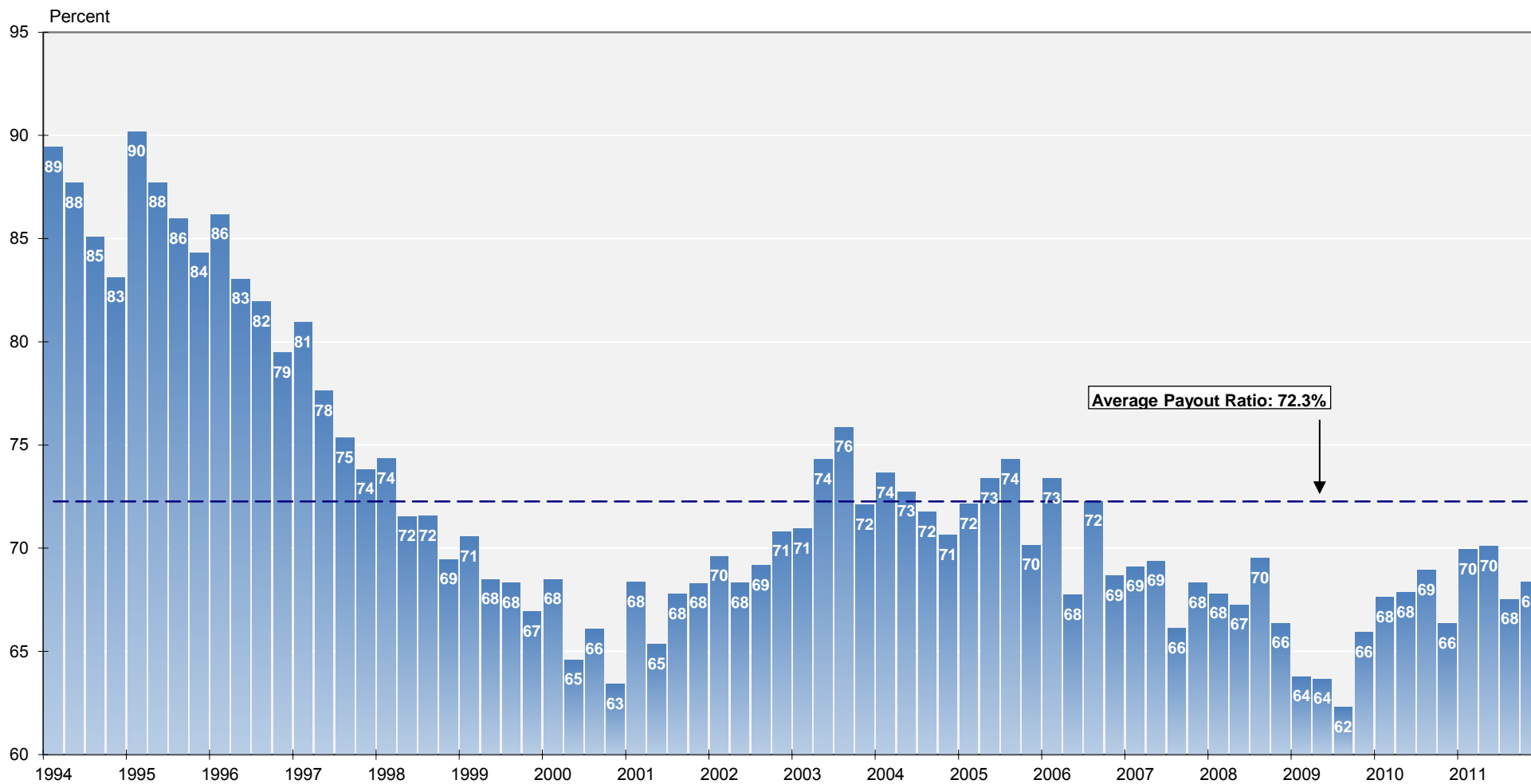
Name	Ticker	Share Price (\$)			FFO per Share		Price/FFO Estimates		FFO	FFO	Debt/	Total Return (%)	Dividend Yield (%)	Equity Market Cap (\$M)	Implied Market Cap (\$M)	Debt Ratio (%)	Average Share Volume	Average Dollar Volume	Relative Liquidity	Long-Term Issuer Rating					
		28-Sep-2012	52 Week		2012	2013	2012	2013	Growth (%)	Payout (%)	EBITDA										Sep-12	QTD	YTD	1-Yr	3-Yr
Diversified																									
American Assets Trust Inc.	AAT	26.79	28.00	16.96	1.26	1.38	21.29	19.39	9.80	67.74	7.30	-0.97	11.32	34.09	54.83	-	-	3.14	1,052.4	1,545.2	40.8	223	6,096	0.579	
CapLease Inc.	LSE	5.17	5.28	3.21	0.89	0.65	7.48	7.99	-6.30	34.21	9.51	6.95	26.27	33.93	52.31	14.74	-7.14	5.42	342.8	343.6	81.0	269	1,385	0.404	
CoreSite Realty Corp.	COR	26.94	27.78	13.00	1.50	1.71	17.92	15.77	13.65	50.00	1.79	-0.25	5.04	54.46	93.72	2.01	-18.89	2.67	565.5	1,248.3	10.9	177	4,710	0.833	
Cousins Properties Inc.	CUZ	7.94	8.37	5.40	0.52	0.56	15.27	14.09	8.33	34.62	15.03	-0.63	3.05	26.08	39.20	-	-	2.27	822.9	822.9	36.5	633	5,112	0.621	
Digital Realty Trust Inc.	DLR	69.85	80.31	53.57	4.32	5.06	16.18	13.81	17.13	133.02	4.51	-5.31	-6.01	7.98	31.91	19.91	16.50	4.18	8,506.5	8,845.9	28.2	1,241	89,119	1.048	BBB
DuPont Fabros Technology Inc.	DFT	25.25	28.94	19.22	1.52	1.93	16.63	13.06	27.39	35.29	3.67	-8.38	-11.13	5.31	30.88	26.05	-	2.38	1,506.6	2,075.6	22.8	693	18,298	1.146	
Entertainment Properties Trust	EPR	44.43	48.11	37.37	3.63	3.90	12.24	11.68	4.78	81.40	5.65	-0.90	9.38	21.87	18.50	-	6.75	2,065.9	2,065.9	39.9	276	12,873	0.623		
Investors Real Estate Trust	IRET	8.27	8.49	6.89	0.65	0.71	12.69	11.68	8.64	81.25	7.92	0.73	6.06	19.31	22.99	4.42	1.55	6.29	746.5	908.6	57.4	381	3,164	0.424	
Lovington Realty Trust	LXP	9.66	10.25	5.96	0.97	1.03	10.01	9.36	6.91	52.08	5.88	4.61	15.85	34.88	57.08	31.37	-0.30	6.21	1,506.8	1,550.6	56.4	916	9,036	0.600	
One Liberty Properties Inc.	OLP	18.65	20.28	14.07	1.57	1.64	11.88	11.41	4.14	86.84	6.23	-0.74	0.74	19.12	36.63	38.08	9.18	7.08	275.8	275.8	45.9	44	847	0.307	
Select Income REIT	SIR	24.62	26.09	21.60	2.71	2.90	9.10	8.50	7.02	0.00	-	-0.77	5.65	15.41	-	-	1.99	768.1	768.1	30.2	147	3,629	0.472		
Vornado Realty Trust	VNO	81.05	88.07	69.97	4.96	5.00	16.33	16.20	0.80	37.91	5.16	-0.15	-2.67	8.10	12.31	11.71	-1.94	3.41	14,932.6	15,866.5	38.3	1,079	88,931	0.596	BBB+
Washington Real Estate Investment Trust	WRE	26.82	30.99	25.64	1.90	1.97	14.15	13.65	3.69	92.29	6.18	0.92	-4.72	2.16	0.80	3.52	1.81	4.47	1,767.3	1,767.3	40.1	490	13,545	0.766	BBB
Whitestone REIT	WSR	13.20	13.90	10.53	0.94	1.11	14.07	11.87	18.55	114.00	6.32	1.18	-2.36	18.29	29.45	-	-	8.64	214.0	225.9	47.8	151	1,996	0.933	
Winthrop Realty Trust	FUR	10.78	12.53	8.16	1.26	1.30	8.58	8.31	3.18	38.69	4.71	-3.71	-10.04	10.57	31.47	9.50	-13.96	6.03	354.0	354.0	39.3	131	1,499	0.423	
AVERAGE		26.63	29.16	20.77	1.89	2.05	13.59	12.45	8.52	62.62	6.42	-0.49	3.13	20.09	36.82	16.16	-0.81	4.73	2,367.8	2,577.6	41.0	457	17,349	0.652	
Health Care																									
HCP Inc.	HCP	44.48	47.21	33.83	2.76	2.93	16.11	15.18	6.14	78.13	5.00	-3.01	1.84	11.18	32.98	22.05	12.43	4.50	19,105.2	19,365.7	28.9	2,596	118,693	0.621	BBB
Health Care REIT Inc.	HCN	57.75	62.24	45.03	3.53	3.94	16.34	14.64	11.62	91.36	6.45	-1.20	0.24	9.99	29.99	18.19	12.09	5.13	13,195.3	13,195.3	38.2	3,550	206,277	1.563	BBB-
Healthcare Realty Trust Inc.	HR	23.05	24.93	16.17	1.35	1.42	17.04	16.22	5.07	85.71	7.94	-4.99	-2.11	29.09	44.89	9.16	3.58	5.21	1,794.0	1,794.0	42.9	899	21,660	1.207	BBB-
LTC Properties Inc.	LTC	31.85	37.20	24.09	2.29	2.43	13.93	13.09	6.40	77.68	2.08	-5.16	-11.03	7.46	32.95	16.50	12.99	5.84	966.2	966.9	13.4	164	5,448	0.564	
Medical Properties Trust Inc.	MPW	10.45	10.78	8.39	0.85	1.03	12.31	10.15	21.34	133.33	6.21	3.29	10.70	12.64	26.86	19.20	4.48	7.66	1,404.1	1,405.6	41.0	1,059	11,193	0.797	BB
National Health Investors Inc.	NHI	51.44	54.36	40.56	3.09	3.31	16.67	15.55	7.19	84.42	1.14	-0.25	2.33	21.62	29.47	24.63	18.95	5.64	1,428.1	1,428.1	7.8	102	5,364	0.376	
Omega Healthcare Investors Inc.	OHI	22.73	24.75	14.60	2.07	2.16	10.97	10.51	4.38	89.13	5.01	-5.37	2.80	24.27	54.28	20.73	15.98	7.39	2,470.2	2,470.2	38.5	1,162	27,786	1.125	BB+
Sabra Healthcare REIT Inc.	SBRA	20.01	20.42	8.65	1.44	1.67	13.88	11.97	16.00	103.13	4.93	4.38	19.05	75.75	129.51	-	-	6.60	737.7	737.7	40.3	288	5,705	0.773	B+
Senior Housing Properties Trust	SNH	21.78	23.46	19.94	1.76	1.87	12.35	11.66	5.92	90.48	4.85	-1.54	-0.78	2.22	8.40	11.71	7.08	6.98	3,843.6	3,843.6	35.1	1,592	35,402	0.921	BBB-
Universal Health Realty Income Trust	UHT	45.98	46.88	32.21	-	-	-	-	-	93.85	2.77	7.95	12.22	23.26	45.38	19.90	12.75	5.35	581.9	581.9	27.3	41	1,855	0.319	
Ventas Inc.	VTR	62.25	67.33	47.70	3.66	3.94	17.03	15.80	7.78	83.78	5.50	-4.04	-0.44	16.50	31.48	22.66	13.96	3.98	18,315.8	18,431.6	27.9	1,936	123,987	0.677	BBB
AVERAGE		35.62	38.14	26.47	2.28	2.47	14.66	13.48	9.18	91.91	4.72	-0.90	3.16	21.27	42.38	18.47	11.43	5.84	5,803.8	5,838.2	31.0	1,217	51,215	0.813	
Lodging/Resorts																									
Ashford Hospitality Trust	AHT	8.40	9.78	6.59	1.51	1.67	5.56	5.03	10.57	-	12.86	2.81	0.98	9.12	25.90	38.17	1.18	5.24	570.8	718.8	76.3	346	2,975	0.521	
Chatham Lodging Trust	CLDT	13.88	14.81	9.20	1.35	1.61	10.31	8.60	19.80	-	10.42	0.48	-1.42	34.25	48.28	-	-	5.76	191.8	191.8	52.0	34	484	0.252	
Chesapeake Lodging Trust	CHSP	19.87	20.96	11.30	1.50	1.95	13.23	10.20	29.69	111.11	11.03	7.85	16.68	33.25	72.88	-	-	4.43	638.9	638.9	43.1	382	7,533	1.179	
DiamondRock Hospitality Co.	DRH	9.63	10.98	6.52	0.74	0.86	12.96	11.19	15.78	100.00	14.98	0.94	-4.80	2.30	42.26	9.38	-7.97	3.32	1,879.2	1,879.2	34.6	1,561	15,596	0.830	
FelCor Lodging Trust Inc.	FCH	4.74	5.32	3.03	0.26	0.31	18.54	15.37	20.67	-	12.68	2.16	0.85	55.41	103.43	1.52	-22.56	0.00	590.0	593.1	72.3	769	3,864	0.655	B-
Hersha Hospitality Trust (CI A)	HT	4.90	5.81	2.18	0.39	0.48	12.51	10.21	22.51	-	15.83	-0.42	-6.08	3.93	48.39	21.95	-5.74	4.90	971.9	1,007.5	40.5	1,801	9,501	0.978	
Hospitality Properties Trust	HPT	23.78	27.63	19.80	3.11	3.26	7.65	7.29	5.04	60.81	3.97	-1.20	-2.18	1.18	20.45	12.75	-2.21	7.57	2,934.0	2,934.0	41.8	684	16,673	0.568	BBB-
Host Hotels & Resorts Inc.	HST	16.05	17.25	10.17	1.07	1.27	14.96	12.67	18.01	33.33	8.44	5.43	1.96	10.12	49.19	12.82	-4.16	1.99	11,542.4	11,710.9	31.2	8,606	141,257	1.224	BB-
LaSalle Hotel Properties	LHO	26.69	30.12	17.75	2.13	2.46	12.53	10.84	15.65	68.75	8.34	-1.31	-7.71	12.32	42.28	12.51	-6.01	3.00	2,285.5	2,285.5	32.1	1,236	34,243	1.498	
MHI Hospitality Corp.	MDH	3.91	4.07	1.92	-	-	-	-	-	18.23	5.98	14.24	74.56	93.92	24.35	-12.84	3.07	39.1	50.8	76.9	21	84	0.214		
Pebblebrook Hotel Trust	PEB	23.39	25.29	14.41	1.18	1.56	19.80	15.03	31.80	133.33	7.68	-0.51	0.85	23.87	52.76	-	-	2.05	1,378.8	1,387.5	17.4	439	10,698	0.776	
RLJ Lodging Trust	RLJ	18.91	19.28	11.78	1.71	2.02	11.07	9.37	18.08	-	7.05	6.92	5.21	15.41	53.47	-	-	3.49	2,010.6	2,027.5	42.2	757	14,196	0.706	
Strategic Hotels & Resorts Inc.	BEE	6.01	6.93	3.94	0.28	0.40	21.46	14.98	43.25	-	13.22	-1.48	-6.97	11.92	39.44	32.45	-20.56	0.00	1,227.6	1,232.8	44.1	1,548	9,750	0.794	
Summit Hotel Properties Inc.	INN	8.54	10.09	6.76	0.74	0.97	11.57	8.85	30.70	75.00	6.41	0.23	3.48	-5.91	27.49	-	-	5.27	269.0	355.3	46.7	368	3,185	1.184	
Sunstone Hotel Investors Inc.	SHO	11.00	11.70	5.07	1.00	1.15	11.04	9.53	15.78	0.00	9.13	5.47	0.09	34.97	93.32	15.74	-12.12	0.00	1,492.1	1,492.1	50.0	1,449	16,221	1.087	
Supertel Hospitality Inc.	SPPR	1.05	1.31	0.61	0.12	0.14	8.75	7.50	16.67	-	32.21	9.38	10.53	60.											

Mortgage

Name	Ticker	Share Price (\$)			FFO per Share		Price/FFO		FFO Growth (%)	FFO Payout (%)	Debt/EBITDA	Total Return (%)					Dividend Yield (%)	Equity Market Cap (\$M)	Implied Market Cap (\$M)	Debt Ratio (%)	Average Share Volume	Average Dollar Volume	Relative Liquidity	Long-Term Issuer Rating			
		28-Sep-2012	52 Week High	52 Week Low	2012	2013	2012	2013				2012 - 2013	2012: Q2	2012: Q2	Sep-12	QTD									YTD	1-Yr	3-Yr
Home Financing																											
AG Mortgage Investment Trust Inc.	MITT	24.13	24.31	17.22	-	-	-	-	-	-	31.47	5.55	15.91	32.56	47.72	-	-	12.76	547.9	547.9	86.3	574	13,685	2,498			
American Capital Agency Corp.	AGNC	34.59	36.68	25.89	-	-	-	-	-	-	-	2.87	6.64	38.02	50.15	28.56	-	14.46	11,815.9	11,815.9	87.7	6,875	242,811	2,053			
American Capital Mortgage Investment Corp.	MTGE	25.13	26.56	15.70	-	-	-	-	-	-	-	-	2.87	5.24	9.15	49.40	75.64	-	14.33	911.3	911.3	86.8	961	24,419	2,680		
Analy Capital Management Inc.	NLY	16.84	17.75	15.48	-	-	-	-	-	-	-	-	17.52	0.17	-0.96	14.84	13.38	12.47	16.02	11.88	16,319.2	16,319.2	75.0	11,613	202,258	1,239	
Anworth Mortgage Asset Corp.	ANH	6.80	7.05	6.03	-	-	-	-	-	-	-	-	38.14	-0.87	-0.96	14.84	13.38	9.04	20.02	10.59	946.5	946.5	89.0	1,284	8,849	0,935	
Apollo Residential Mortgage Inc.	AMTG	22.04	23.45	14.47	-	-	-	-	-	-	-	-	13.10	11.97	18.71	62.25	53.93	-	-	12.02	533.0	533.0	84.9	751	16,493	3,094	
Armour Residential REIT Inc.	ARR	7.66	7.75	5.91	-	-	-	-	-	-	-	-	-	4.05	12.17	23.81	34.59	8.91	-	15.67	2,278.7	2,278.7	90.6	8,407	63,444	2,784	
Capstead Mortgage Corp.	CMO	13.49	14.58	10.81	-	-	-	-	-	-	-	-	-	-3.42	-0.44	18.33	31.92	12.70	21.80	10.67	1,330.9	1,330.9	90.8	1,233	17,582	1,321	
Chimera Investment Corp.	CIM	2.71	3.12	2.13	-	-	-	-	-	-	-	-	-	10.20	18.60	20.16	13.44	4.52	-	13.28	2,783.3	-	-	11,682	31,534	1,133	
CYS Investments Inc	CYS	14.09	14.88	11.36	1.89	2.02	7.47	6.96	7.19	-	-	-	-	26.52	1.08	5.55	19.08	34.48	18.70	-	12.78	2,347.4	2,347.4	85.9	3,448	49,929	2,127
Dynex Capital Inc.	DX	10.75	10.93	7.51	-	-	7.47	-	-	-	-	-	-	16.56	2.87	6.49	24.71	45.56	19.76	16.88	10.79	584.2	584.2	84.8	450	4,849	0,830
Hatteras Financial Corp.	HTS	28.19	29.67	23.81	-	-	-	-	-	-	-	-	-	37.04	0.00	1.36	17.07	26.86	12.98	-	11.35	2,756.4	2,756.4	87.8	1,040	30,235	1,097
Invesco Mortgage Capital Inc.	IVR	20.13	21.54	13.32	-	-	-	-	-	-	-	-	-	1.39	13.27	58.81	65.10	15.61	-	12.92	3,322.8	2,351.5	86.3	1,532	31,684	1,364	
MFA Financial Inc.	MFA	8.50	8.70	6.25	0.86	0.91	9.83	9.32	5.57	-	-	-	-	17.52	3.79	10.90	34.47	39.06	16.18	14.73	10.82	3,026.5	3,026.5	76.9	3,804	31,895	1,054
PennyMac Mortgage Investment Trust	PMT	23.37	23.63	15.14	-	-	-	-	-	-	-	-	-	8.50	21.40	52.84	64.53	14.05	-	9.41	1,376.6	1,376.6	55.8	929	21,205	1,540	
Redwood Trust Inc.	RWT	14.46	14.92	9.79	-	-	-	-	-	-	-	-	-	2.63	17.85	50.83	40.71	5.18	-6.67	6.92	1,135.8	1,135.8	80.9	622	9,142	0,805	
Two Harbors Investment Corp.	TWO	11.75	11.96	8.32	-	-	-	-	-	-	-	-	-	4.51	16.92	41.55	54.46	23.36	-	12.26	3,282.4	3,282.4	82.5	5,891	69,327	2,112	
Western Asset Mortgage Capital Corp	WMC	22.20	24.45	18.40	-	-	-	-	-	-	-	-	-	7.37	20.35	24.97	-	-	-	5.54	229.4	-	-	704	15,671	6,831	
AVERAGE		17.05	17.89	12.64	1.38	1.47	8.65	8.14	6.38	-	27.46	3.77	10.96	33.82	41.58	14.43	13.80	11.58	3,029.3	3,221.5	83.2	3,434	49,156	1,972			
Commercial Financing																											
Apollo Commercial Real Estate Finance Inc.	ARI	17.34	18.13	12.22	1.56	1.73	11.12	10.02	10.90	-	-	1.27	10.41	42.02	45.91	7.46	-	9.23	356.5	356.5	51.5	186	3,313	0,929			
Arbor Realty Trust Inc.	ABR	5.97	6.46	3.20	0.84	0.39	7.11	15.31	-53.57	-	-	29.74	3.83	13.56	74.81	62.79	29.45	-16.53	2.93	165.7	165.7	89.9	96	570	0,344		
Ares Commercial Real Estate Corp.	ACRE	17.06	18.00	16.31	-	-	-	-	-	-	-	-	-	6.98	1.66	-2.06	-4.56	-	-	0.70	157.5	-	-	63	1,085	0,689	
BRT Realty Trust	BRT	6.50	8.52	5.90	-	-	-	-	-	-	-	-	-	3.26	0.00	2.52	4.50	4.48	-10.39	0.00	91.1	91.1	64.6	5	35	0,039	
Capital Trust Inc. CI A	CT	3.77	4.15	1.96	-	-	-	-	-	-	-	-	-	21.61	30.90	67.56	69.06	7.45	-33.59	0.00	84.9	84.9	89.2	64	205	0,242	
Colony Financial Inc.	CLNY	19.48	19.89	12.06	-	-	-	-	-	-	-	-	-	0.83	3.27	14.67	31.52	63.42	6.56	-	7.19	763.0	763.0	20.9	653	12,733	1,669
Crexus Investment Corp.	CXS	10.81	11.36	8.30	-	-	-	-	-	-	-	-	-	0.53	8.25	9.42	12.98	36.45	-1.53	-	11.84	828.3	828.3	2.4	603	6,491	0,784
iStar Financial Inc.	SFI	8.28	8.48	5.09	-	-	-	-	-	-	-	-	-	30.98	15.32	28.37	56.52	42.27	39.73	-21.60	0.00	698.5	698.5	91.1	964	7,632	1,093
Newcastle Investment Corp.	NCT	7.53	8.05	3.75	2.17	1.40	3.48	5.40	-35.57	-	-	-	-	7.91	1.99	15.69	77.37	109.19	44.60	-9.76	11.69	1,298.8	1,298.8	77.4	2,610	20,242	1,558
Northstar Realty Finance Corp.	NRF	6.36	6.50	3.09	-0.14	1.33	-45.43	4.78	-1,050.00	-	-	-	-	51.55	8.35	25.36	44.52	115.10	35.03	4.10	10.06	848.2	888.4	82.5	1,397	8,681	1,024
PMC Commercial Trust	PCC	7.50	8.84	7.00	-	-	-	-	-	-	-	-	-	3.06	-0.68	13.70	4.36	9.14	-1.43	8.53	79.1	79.1	56.7	15	116	0,147	
RAIT Financial Trust	RAS	5.25	6.11	3.12	-	-	-	-	-	-	-	-	-	11.70	15.59	15.55	64.91	-13.54	-21.20	6.10	261.8	261.8	88.6	422	2,172	0,830	
Resource Capital Corp.	RSO	5.88	6.28	4.55	-	-	-	-	-	-	-	-	-	17.02	1.61	14.00	16.53	36.43	20.04	7.13	13.61	518.5	518.5	79.4	2,215	13,406	2,585
Starwood Property Trust Inc.	STWD	23.27	24.35	16.40	1.87	1.80	12.44	12.94	-3.87	-	-	-	-	5.03	0.66	11.24	33.52	47.44	12.57	-	7.56	2,708.1	2,708.1	31.1	875	20,924	0,773
AVERAGE		10.36	11.08	7.35	1.26	1.33	-2.26	9.69	-226.42	-	16.73	6.13	13.32	37.63	53.99	15.50	-11.47	6.39	632.9	672.5	63.5	726	6,972	0,907			

REIT Payout Ratios: Dividends as a Percent of FFO

1994: Q1 - 2011: Q4



Note: 1994-1999 quarters are based on partial data for the Top 100 Equity REITs.
 Source: NAREIT®, SNL Financial.

FTSE NAREIT All REITs
Summary of Dividends paid by Property Sector
June 29, 2012

Sector	Number of Companies	Implied Market Cap (\$M)	2012: Q2			2012: YTD		
			Total Dividends (\$M)	Funds From Operations (\$M)	Payout Ratio (%)	Total Dividends (\$M)	Funds From Operations (\$M)	Payout Ratio (%)
Industrial/Office	31	92,894	923.9	1,518.4	60.9	1,755.6	3,083.2	56.9
Office	19	59,140	561.9	971.1	57.9	1,137.1	2,095.7	54.3
Industrial	7	22,295	204.7	354.9	57.7	407.5	612.3	66.6
Mixed	5	11,459	157.4	192.4	81.8	211.0	375.2	56.2
Retail	34	152,712	1,244.1	1,747.0	71.2	2,584.1	3,799.0	68.0
Shopping Centers	20	42,655	451.0	599.6	75.2	956.3	1,285.1	74.4
Regional Malls	8	97,210	655.3	998.1	65.7	1,341.4	2,212.1	60.6
Free Standing	6	12,846	137.8	149.2	92.3	286.4	301.8	94.9
Residential	19	76,658	661.5	942.8	70.2	1,283.8	1,908.9	67.3
Apartments	16	72,247	621.7	855.7	72.7	1,198.2	1,748.5	68.5
Manufactured Homes	3	4,411	39.8	87.1	45.6	85.6	160.4	53.4
Diversified	16	39,682	523.4	763.0	68.6	1,034.7	1,392.4	74.3
Lodging/Resorts	17	29,903	224.1	287.8	77.8	564.0	956.5	59.0
Health Care	11	67,463	770.9	868.3	88.8	1,562.2	1,798.5	86.9
Self Storage	4	30,222	292.0	388.1	75.2	582.3	778.8	74.8
Timber	4	28,425	210.8	-	-	420.2	-	-
Infrastructure	2	28,638	0.3	343.2	0.1	83.3	529.1	15.8
Equity REITs	138	546,597	4,851.0	6,869.8	70.6	9,870.3	14,268.7	69.2
Commercial Financing	14	8,981	163.5	-	-	332.2	-	-
Home Financing	19	52,558	1,355.6	-	-	2,775.9	-	-
Mortgage REITs	33	61,539	1,519.1	-	-	3,108.0	-	-

Notes:

¹ Implied market cap is the sum of Operating Partnership units plus common shares outstanding, multiplied by share price.

Source: NAREIT®, SNL Financial.

REIT Industry Balance Sheet

Publicly Listed and Non-Listed Equity and Mortgage REITs

(As of December 31, 2011)

	Listed	Non-Listed	Total Industry	Listed	Non-Listed
				(Percent of total)	
Number of Firms	160	63	223	71.8	28.2
	(Billions of dollars at book value)			(Percent of total)	
Total Assets	539	96	635	84.9	15.1
Total Liabilities	307	52	359	85.5	14.5
Total Equity	232	44	276	84.1	15.9
Total Liabilities plus Shareholder Equity	539	96	635	84.9	15.1
<i>Memo: Net Property Investment</i>					
<i>Book Value</i>	481	63	544	88.4	11.6
<i>Estimated Market Value</i>	732	97	829	88.3	11.7

Source: SNL Financial, The Stanger Report

Summary of Financial Leverage by Property Sector 2012: Q2

(Publicly Traded Real Estate Investment Trusts)

Sector	Number of Companies	Implied Market Capitalization	Debt Ratio	Interest Coverage	Fixed Charge Coverage
Industrial/Office	31	92,743,982	43.0	2.96	2.65
Office	19	60,503,123	42.6	2.76	2.52
Industrial	7	20,871,015	44.5	3.55	3.25
Mixed	5	11,369,844	42.2	2.91	2.31
Retail	32	146,807,140	37.1	2.91	2.70
Shopping Centers	19	40,320,316	39.9	2.61	2.27
Regional Malls	8	95,264,698	36.7	3.04	2.95
Free Standing	5	11,222,125	28.9	3.21	2.70
Residential	19	80,378,428	33.7	2.99	2.84
Apartments	16	75,823,339	32.9	3.01	2.87
Manufactured Homes	3	4,555,089	44.8	2.84	2.59
Diversified	15	38,620,914	37.7	3.46	2.97
Lodging/Resorts	16	28,313,356	40.8	1.97	1.65
Health Care	11	62,714,713	31.8	3.51	3.27
Self Storage	4	30,806,424	10.8	9.96	4.25
Timber	4	25,227,294	25.7	3.20	3.20
Equity Totals	134	533,353,893	35.2	3.11	2.80
Commercial Financing	14	7,626,472	72.0	0.95	0.88
Home Financing	18	48,095,974	83.1	2.49	2.44
Mortgage Totals	32	55,722,446	82.2	2.11	2.04
Industry Totals	166	589,076,339	48.1	2.90	2.65

Notes:

¹ Implied market capitalization is the sum of Operating Partnership units plus common shares outstanding, multiplied by share price; data presented in thousands of dollars.

Source: NAREIT®, SNL Financial.

FTSE EPRA/NAREIT Global Real Estate Index Series Developed Markets

(Percent change, as of September 28, 2012)

(All values based in US dollars)

Period	Global			North America			Asia			Europe		
	Return Components			Return Components			Return Components			Return Components		
	Total	Price	Income	Total	Price	Income	Total	Price	Income	Total	Price	Income
Annual (including current year to date)												
2002	2.82	-2.38	5.20	2.42	-3.79	6.21	-7.15	-10.58	3.44	21.69	16.81	4.88
2003	40.69	33.47	7.23	37.70	29.65	8.05	44.83	38.47	6.36	44.68	38.72	5.96
2004	37.96	31.97	6.00	33.51	26.88	6.63	36.85	32.24	4.61	52.73	46.95	5.78
2005	15.35	10.67	4.69	13.21	8.09	5.12	23.37	18.63	4.73	9.43	6.03	3.39
2006	42.35	37.50	4.85	36.26	30.89	5.38	36.49	32.15	4.34	66.99	62.79	4.20
2007	-6.96	-9.98	3.02	-14.92	-18.25	3.33	14.80	11.67	3.13	-24.50	-26.63	2.13
2008	-47.72	-50.21	2.49	-40.63	-43.88	3.25	-52.48	-54.43	1.94	-51.13	-53.30	2.17
2009	38.26	31.75	6.51	32.22	25.18	7.04	43.43	37.82	5.61	40.45	33.00	7.45
2010	20.40	15.88	4.52	28.65	23.63	5.01	17.21	13.23	3.98	9.23	4.41	4.82
2011	-5.82	-9.40	3.59	8.19	4.11	4.08	-19.61	-22.56	2.94	-12.34	-16.01	3.67
2012	21.64	18.10	3.54	15.50	12.40	3.10	33.18	29.61	3.57	18.82	13.73	5.09
Quarter (including current quarter to date)												
2011: Q3	-17.30	-18.00	0.70	-14.59	-15.42	0.83	-18.08	-18.80	0.72	-23.27	-23.59	0.32
Q4	7.36	6.28	1.08	14.57	13.36	1.21	1.52	0.36	1.17	-2.56	-3.07	0.51
2012: Q1	12.90	11.94	0.96	10.64	9.66	0.99	16.51	15.54	0.97	12.81	11.98	0.84
Q2	2.12	0.80	1.31	3.59	2.64	0.95	1.48	0.40	1.08	-1.84	-4.97	3.12
Q3	5.51	4.66	0.84	0.77	-0.13	0.91	12.63	11.72	0.91	7.30	6.87	0.43
Month												
2012: Apr	2.35	1.98	0.37	3.07	2.88	0.19	2.60	2.36	0.24	-0.87	-2.17	1.30
May	-6.34	-6.76	0.42	-4.66	-4.96	0.30	-8.72	-8.95	0.23	-7.21	-8.54	1.33
Jun	6.52	6.01	0.51	5.41	4.97	0.44	8.35	7.73	0.63	6.72	6.22	0.50
Jul	3.61	3.45	0.16	2.20	2.01	0.18	5.87	5.74	0.13	3.87	3.76	0.11
Aug	0.20	-0.13	0.33	0.13	-0.18	0.31	-0.31	-0.75	0.44	1.82	1.69	0.13
Sep	1.63	1.30	0.32	-1.52	-1.92	0.40	6.72	6.46	0.25	1.45	1.29	0.16
Historical (compound annual rates at month-end)												
1-Year	30.59	25.52		32.32	27.42		35.21	30.07		15.77	10.24	
3-Year	12.92	8.66		20.53	15.96		8.29	4.46		5.03	0.40	
5-Year	-2.20	-6.27		1.95	-2.60		-4.45	-7.98		-7.39	-11.69	
10-Year	11.77	7.12		11.84	6.68		12.71	8.61		10.40	5.99	
15-Year	6.98	2.36		8.80	3.20		5.25	1.55		7.45	3.32	
20-Year	10.11	5.41		12.70	6.32		8.39	4.76		8.95	4.69	

Source: FTSE™, EPRA®, NAREIT®.

Glossary of REITWatch terms:

REIT Name:	Full name of the company.
Ticker:	The company's stock exchange symbol.
Share Price (\$):	The closing price per share on the date noted.
52-Week Share Price (\$):	The high and low closing prices for the shares over the previous 52 weeks.
Price/FFO Multiples:	Price on the date indicated divided by the FactSet mean FFO estimate for the current and following year.
FFO per Share Estimates (\$):	FactSet mean FFO estimate for the current and following year.
FFO Growth (%):	The percentage change between the current and following year mean FFO estimate as reported by FactSet.
Debt/EBITDA Multiples	Average Total Debt over the prior 2 quarters divided by the the most recent quarter's annualized EBITDA.
FFO Payout (%):	Regular cash dividends paid on the company's primary issue of common stock as a percent of funds from operations, on a per-share basis.
Dividend Yield (%):	The current indicated dividend rate annualized and divided by the current stock price.
Dividend Spread (%):	The difference between the REIT dividend yield and the 10-year constant maturity treasury yield.
Total Returns (%):	Total returns are calculated by taking the closing price for the current period, adding any dividends with an ex-dividend date in that period then subtracting the closing price for the previous period and dividing the result by the closing price of the prior period.
Month:	The monthly total return as calculated at month-end.
Year to Date:	The total return for the calendar year through the latest month-end.
One Year:	The total return for the previous year.
Two Year:	The annualized total return for the previous 2 years.
Three Year:	The annualized total return for the previous 3 years.
Five Year:	The annualized total return for the previous 5 years.
Equity Market Capitalization (\$ Millions):	Price on the date indicated times the number of common shares outstanding.
Implied Market Capitalization (\$ Millions):	Price on the date indicated times the number of shares outstanding including Operating Partnership Units.
Debt Ratio (%):	A leverage ratio calculated by taking the REIT's total debt and dividing it by the total market capitalization. Total capitalization is the sum of implied market capitalization and total debt.
Long-Term Issuer Rating:	The long-term credit rating, as announced by Standard & Poors, and obtained from SNL Financial.
Average Share Volume:	The average number of shares traded daily over the past month, represented in thousands.
Average Daily Dollar Volume:	The average of the daily value of shares traded over the past month, represented in thousands. Daily value is computed by multiplying shares traded by the closing price on that date.
Relative Liquidity (%):	Average daily dollar volume divided by equity market capitalization.



National Association of Real Estate Investment Trusts®
REITs: Building Dividends & Diversification®

1875 I St, NW, Suite 600, Washington D.C. 20006
phone: 202-739-9400 • fax: 202-739-9401